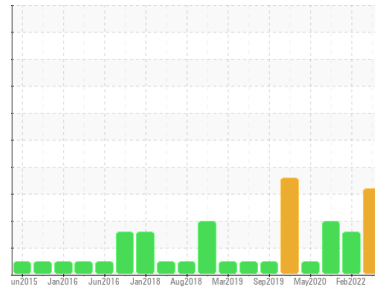




PROBLEM SUMMARY

Sample Rating Trend



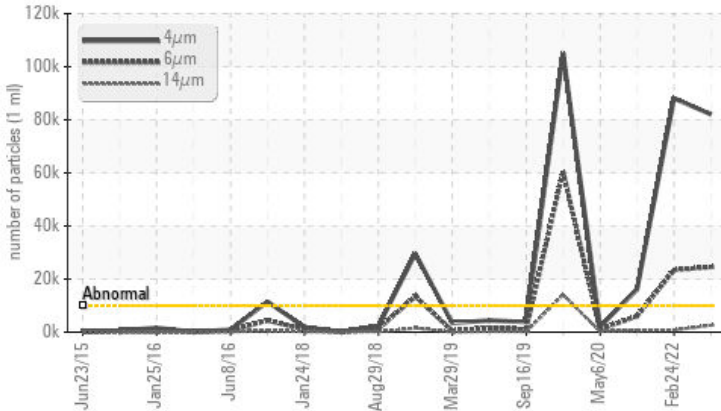
ADDITIVES



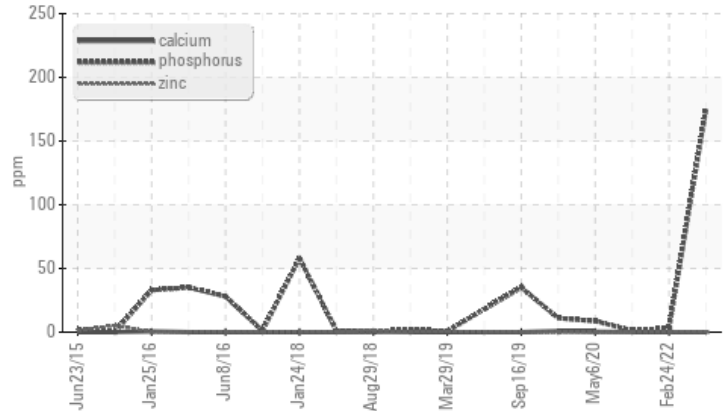
Machine Id
KAESER C-6E (S/N 1006)
 Component
Compressor
 Fluid
KAESER SIGMA (OEM) S-460 (--- GAL)

COMPONENT CONDITION SUMMARY

▲ Particle Trend



▲ Additives



RECOMMENDATION

No corrective action is recommended at this time. Oil and filter change at the time of sampling has been noted. Resample at the next service interval to monitor.

PROBLEMATIC TEST RESULTS

Sample Status			ABNORMAL	ABNORMAL	ABNORMAL
Phosphorus	ppm	ASTM D5185m	▲ 175	3	1
Sulfur	ppm	ASTM D5185m	▲ 2490	4302	11471
Particles >4µm		ASTM D7647 >10000	▲ 82043	▲ 88091	▲ 16164
Particles >6µm		ASTM D7647 >2500	▲ 24518	▲ 23401	▲ 5979
Particles >14µm		ASTM D7647 >320	▲ 2599	▲ 769	▲ 637
Particles >21µm		ASTM D7647 >80	▲ 931	▲ 167	▲ 189
Particles >38µm		ASTM D7647 >20	▲ 81	9	▲ 25
Oil Cleanliness		ISO 4406 (c) >20/18/15	▲ 24/22/19	▲ 24/22/17	▲ 21/20/16

Customer Id: WESLONWC
 Sample No.: WC0710518
 Lab Number: 05585948
 Test Package: IND 2



To manage this report scan the QR code

To discuss the diagnosis or test data:
 Doug Bogart +1 (800)237-1369 x4016
dougb@wearcheckusa.com

To change component or sample information:
 Customer Service +1 1-800-237-1369
customerservice@wearcheck.com

RECOMMENDED ACTIONS

Action	Status	Date	Done By	Description
Change Fluid	---	---	?	Oil and filter change at the time of sampling has been noted.
Change Filter	---	---	?	Oil and filter change at the time of sampling has been noted.

HISTORICAL DIAGNOSIS

24 Feb 2022 Diag: Don Baldrige

ISO



No corrective action is recommended at this time. The filter change at the time of sampling has been noted. Resample at the next service interval to monitor. All component wear rates are normal. There is a high amount of particulates present in the oil. The AN level is acceptable for this fluid. The condition of the oil is suitable for further service.

view report



28 Aug 2020 Diag: Doug Bogart

ISO



No corrective action is recommended at this time. The filter change at the time of sampling has been noted. Resample at the next service interval to monitor. All component wear rates are normal. There is a high amount of particulates present in the oil. The AN level is acceptable for this fluid. The condition of the oil is suitable for further service.

view report



06 May 2020 Diag: Don Baldrige

NORMAL



Resample at the next service interval to monitor. All component wear rates are normal. The amount and size of particulates present in the system are acceptable. There is no indication of any contamination in the oil. The AN level is acceptable for this fluid. The condition of the oil is suitable for further service.

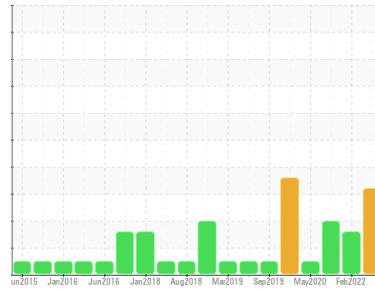
view report





OIL ANALYSIS REPORT

Sample Rating Trend



ADDITIVES



Machine Id
KAESER C-6E (S/N 1006)
 Component
Compressor
 Fluid
KAESER SIGMA (OEM) S-460 (--- GAL)

DIAGNOSIS

▲ Recommendation

No corrective action is recommended at this time. Oil and filter change at the time of sampling has been noted. Resample at the next service interval to monitor.

Wear

All component wear rates are normal.

▲ Contamination

There is a high amount of particulates present in the oil.

▲ Fluid Condition

Additive levels indicate the addition of a different brand, or type of oil. Confirm oil type. The AN level is acceptable for this fluid.

SAMPLE INFORMATION

	method	limit/base	current	history 1	history 2
Sample Number	Client Info		WC0710518	WC0613576	WC12335367
Sample Date	Client Info		29 Jun 2022	24 Feb 2022	28 Aug 2020
Machine Age	hrs	Client Info	7957	150542	144431
Oil Age	hrs	Client Info	0	0	0
Oil Changed	Client Info		Changed	N/A	Not Changd
Sample Status			ABNORMAL	ABNORMAL	ABNORMAL

WEAR METALS

	method	limit/base	current	history 1	history 2
Iron	ppm	ASTM D5185m >50	<1	<1	0
Chromium	ppm	ASTM D5185m >10	0	0	0
Nickel	ppm	ASTM D5185m >3	0	0	0
Titanium	ppm	ASTM D5185m >3	0	0	0
Silver	ppm	ASTM D5185m >2	0	0	0
Aluminum	ppm	ASTM D5185m >10	0	0	0
Lead	ppm	ASTM D5185m >10	0	0	0
Copper	ppm	ASTM D5185m >50	4	3	6
Tin	ppm	ASTM D5185m >10	0	0	0
Antimony	ppm	ASTM D5185m	---	0	0
Vanadium	ppm	ASTM D5185m	0	0	0
Cadmium	ppm	ASTM D5185m	0	0	0

ADDITIVES

	method	limit/base	current	history 1	history 2
Boron	ppm	ASTM D5185m	2	<1	9
Barium	ppm	ASTM D5185m 90	0	0	0
Molybdenum	ppm	ASTM D5185m	0	0	0
Manganese	ppm	ASTM D5185m	0	0	0
Magnesium	ppm	ASTM D5185m 90	0	3	0
Calcium	ppm	ASTM D5185m 2	0	0	0
Phosphorus	ppm	ASTM D5185m	▲ 175	3	1
Zinc	ppm	ASTM D5185m	0	0	0
Sulfur	ppm	ASTM D5185m	▲ 2490	4302	11471

CONTAMINANTS

	method	limit/base	current	history 1	history 2
Silicon	ppm	ASTM D5185m >25	<1	<1	<1
Sodium	ppm	ASTM D5185m	2	0	0
Potassium	ppm	ASTM D5185m >20	0	<1	<1

FLUID CLEANLINESS

	method	limit/base	current	history 1	history 2
Particles >4µm	ASTM D7647	>10000	▲ 82043	▲ 88091	▲ 16164
Particles >6µm	ASTM D7647	>2500	▲ 24518	▲ 23401	▲ 5979
Particles >14µm	ASTM D7647	>320	▲ 2599	▲ 769	▲ 637
Particles >21µm	ASTM D7647	>80	▲ 931	▲ 167	▲ 189
Particles >38µm	ASTM D7647	>20	▲ 81	9	▲ 25
Particles >71µm	ASTM D7647	>4	3	1	2
Oil Cleanliness	ISO 4406 (c)	>20/18/15	▲ 24/22/19	▲ 24/22/17	▲ 21/20/16

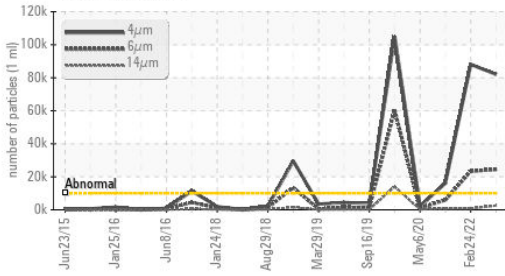
FLUID DEGRADATION

	method	limit/base	current	history 1	history 2
Acid Number (AN)	mg KOH/g	ASTM D8045 0.4	0.13	0.35	0.385

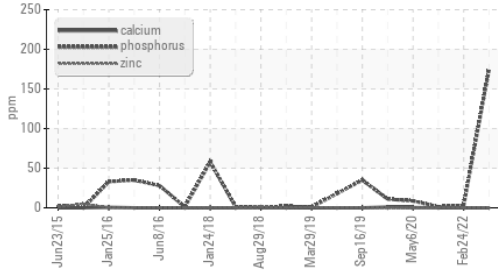


OIL ANALYSIS REPORT

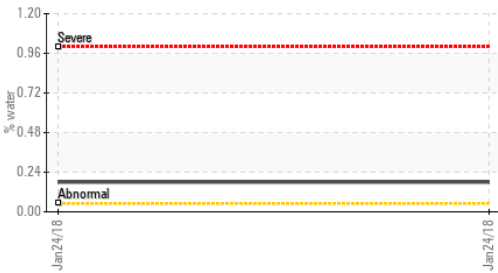
Particle Trend



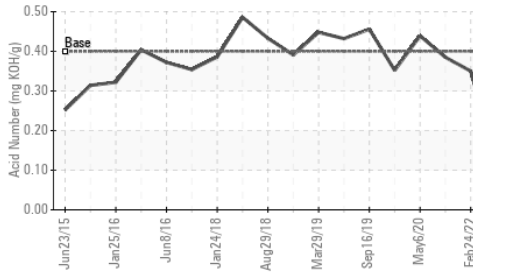
Additives



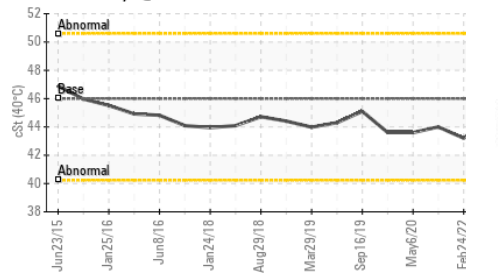
Water



Acid Number



Viscosity @ 40°C

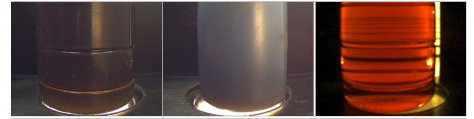


VISUAL	method	limit/base	current	history 1	history 2
White Metal	scalar	*Visual	NONE	NONE	NONE
Yellow Metal	scalar	*Visual	NONE	NONE	NONE
Precipitate	scalar	*Visual	NONE	NONE	NONE
Silt	scalar	*Visual	NONE	NONE	NONE
Debris	scalar	*Visual	NONE	NONE	NONE
Sand/Dirt	scalar	*Visual	NONE	NONE	NONE
Appearance	scalar	*Visual	NORML	NORML	NORML
Odor	scalar	*Visual	NORML	NORML	NORML
Emulsified Water	scalar	*Visual	>0.05	NEG	NEG
Free Water	scalar	*Visual		NEG	NEG

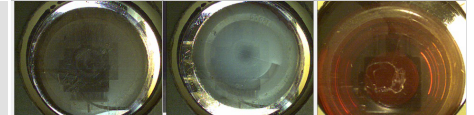
FLUID PROPERTIES	method	limit/base	current	history 1	history 2
Visc @ 40°C	cSt	ASTM D445 46	44.6	43.2	44.0

SAMPLE IMAGES	method	limit/base	current	history 1	history 2
---------------	--------	------------	---------	-----------	-----------

Color

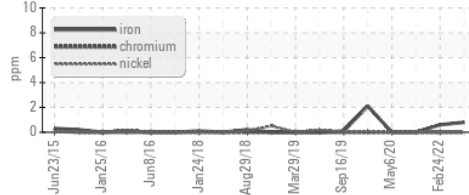


Bottom

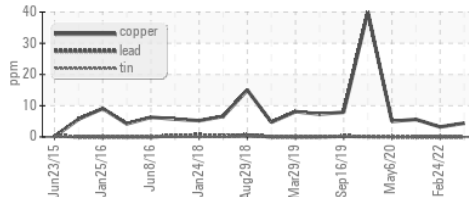


GRAPHS

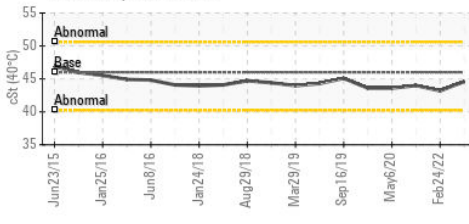
Ferrous Alloys



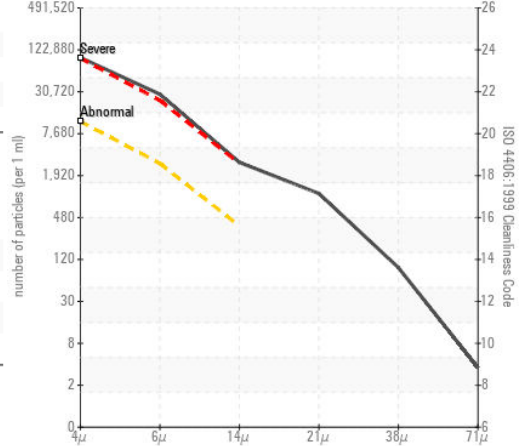
Non-ferrous Metals



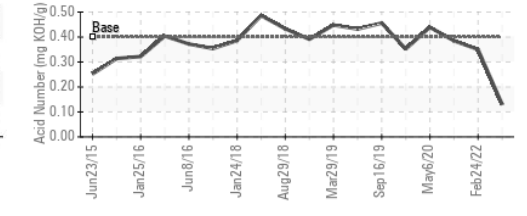
Viscosity @ 40°C



Particle Count



Acid Number



Certificate L2367

Laboratory : WearCheck USA - 501 Madison Ave., Cary, NC 27513
Sample No. : WC0710518 **Received** : 07 Jul 2022
Lab Number : 05585948 **Diagnosed** : 08 Jul 2022
Unique Number : 10045395 **Diagnostician** : Doug Bogart

Test Package : IND 2 (Additional Tests: KF, PrtCount)

To discuss this sample report, contact Customer Service at 1-800-237-1369.

* - Denotes test methods that are outside of the ISO 17025 scope of accreditation.

Statements of conformity to specifications are based on the simple acceptance decision rule (JCGM 106:2012)

2290 CALLAHAN RD
 LONGVIEW, TX
 US 75607
 Contact: ROB WALLIN
 rwallin@westlake.com
 T: (903)242-7576
 F: (903)758-9521