



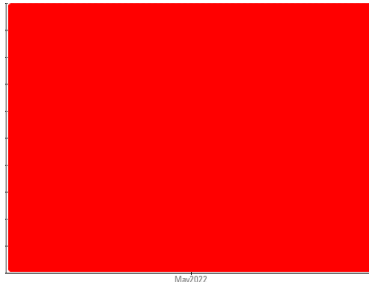
COOLANT REPORT

Sample Rating Trend

WEAR



Area
PRIDY [200007667]
 Machine Id
C-3 13WEA88845
 Component
Coolant
 Fluid
ISENTHAL VARIDOS 45 (--- LTR)



DIAGNOSIS

▲ Recommendation

We recommend an early resample to monitor this condition.

▲ Corrosion

Metal levels are high indicating corrosion in the cooling system.

Contaminants

There is no indication of any contamination in the coolant.

Coolant Condition

Glycol and nitrite levels are acceptable. The pH level of this fluid is within the acceptable limits.

SAMPLE INFORMATION

	method	limit/base	current	history1	history2
Sample Number	Client Info		NX05593414	---	---
Sample Date	Client Info		03 May 2022	---	---
Machine Age	hrs	Client Info	2245	---	---
Oil Age	hrs	Client Info	0	---	---
Oil Changed	Client Info		N/A	---	---
Sample Status			SEVERE	---	---

PHYSICAL TEST RESULTS

	method	limit/base	current	history1	history2
Specific Gravity	*ASTM D1298		1.059	---	---
pH	Scale 0-14	ASTM D1287	8.5	8.33	---
Nitrites	ppm	AP-053:2009	260	184	---
Reserve Alkalinity	Scale 0-20	*ASTM D1121		---	---
Percentage Glycol	%	ASTM D3321	45	43.6	---
Freezing Point	°F	ASTM D3321	-24	-19	---
Total Dissolved Solids				228.0	---
Carboxylate				n/a	---

CORROSION INHIBITORS

	method	limit/base	current	history1	history2
Silicon	ppm	ASTM D6130	25	21	---
Phosphorus	ppm	ASTM D6130	140	38	---
Boron	ppm	ASTM D6130	0	0	---
Molybdenum	ppm	ASTM D6130	1075	636	---

CORROSION

	method	limit/base	current	history1	history2
Iron	ppm	ASTM D6130	>15	▲ 56	---
Aluminum	ppm	ASTM D6130	>10	▲ 97	---
Copper	ppm	ASTM D6130	>10	<1	---
Lead	ppm	ASTM D6130	>10	<1	---
Tin	ppm	ASTM D6130	>10	0	---
Zinc	ppm	ASTM D6130		19	---

CONTAMINANTS

	method	limit/base	current	history1	history2
Chlorine	ppm	ASTM D6130		42	---

CARRIER SALTS

	method	limit/base	current	history1	history2
Sodium	ppm	ASTM D6130	1075	1609	---
Potassium	ppm	ASTM D6130	5	417	---

SCALE POTENTIAL

	method	limit/base	current	history1	history2
Calcium	ppm	ASTM D6130		6	---
Magnesium	ppm	ASTM D6130		2	---



COOLANT REPORT

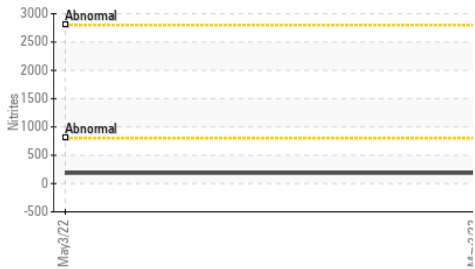
▲ Copper/Aluminum/Lead





▲ Iron/Tin/Silver



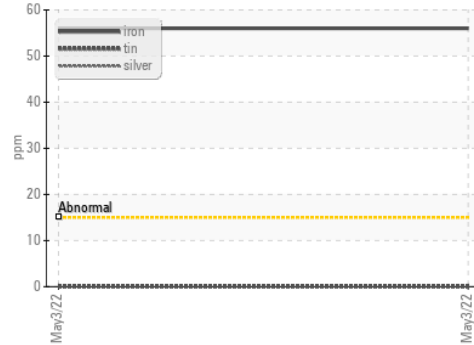
Nitrites



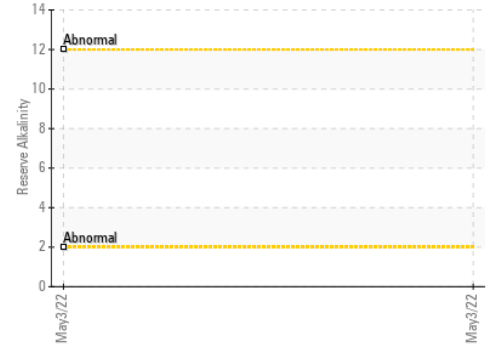
VISUAL	method	limit/base	current	history1	history2
Coolant Color	*Visual	DkYlw	Yllow	---	---
Coolant Appearance	*Visual	Clear	normal	---	---
Color				no image	no image
Bottom				no image	no image

GRAPHS

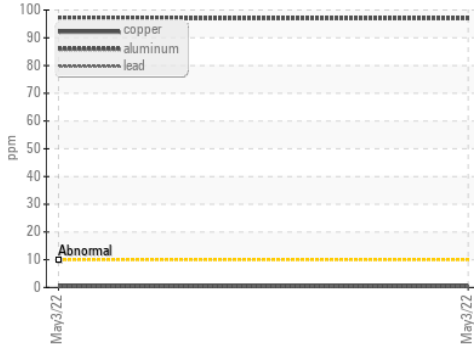
▲ Iron/Tin/Silver



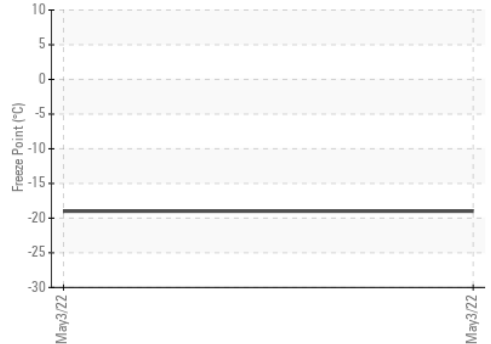
Reserve Alkalinity



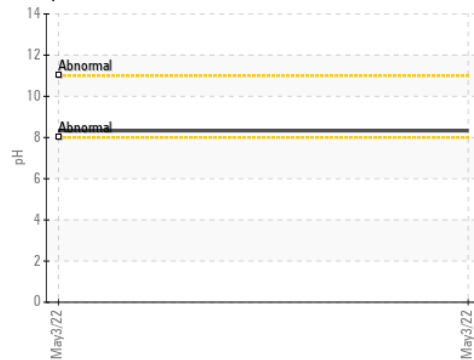
▲ Copper/Aluminum/Lead



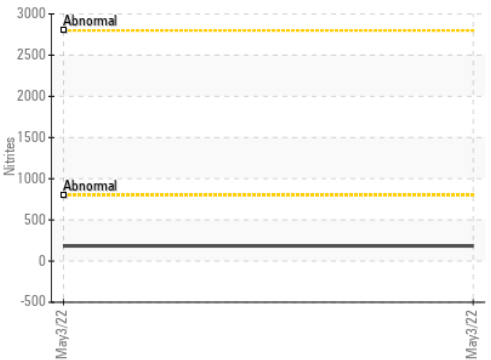
Freeze Point



pH



Nitrites



Certificate L2367

Laboratory : WearCheck USA - 501 Madison Ave., Cary, NC 27513

Sample No. : NX05593414

Lab Number : 05593414

Unique Number : 10052861

Test Package : COOL- (Additional Tests: COOL, ICP)

Received : 15 Jul 2022

Tested : 19 Jul 2022

Diagnosed : 23 Jul 2022 - Doug Bogart

NORDEX USA - Chicago

300 SOUTH WACKER DRIVE, SUITE 1500

CHICAGO, IL

US 60606

Contact: DEVIN LINEHAN

DLinehan@nordex-online.com

T: (312)386-4124

F: (312)386-7102

To discuss this sample report, contact Customer Service at 1-800-237-1369.

* - Denotes test methods that are outside of the ISO 17025 scope of accreditation.

Statements of conformity to specifications are based on the simple acceptance decision rule (JCGM 106:2012)