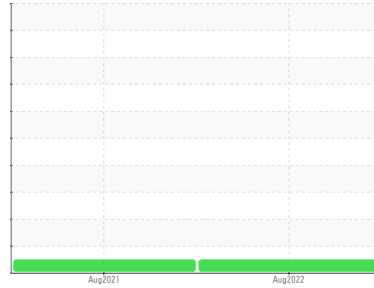




# OIL ANALYSIS REPORT

Sample Rating Trend

**NORMAL**



Area  
**{UNASSIGNED}**  
 Machine Id  
**TRANE C1 (S/N L08L05410)**  
 Component  
**Chiller**  
 Fluid  
**TRANE 0022 (--- GAL)**

## DIAGNOSIS

### Recommendation

Resample at the next service interval to monitor.

### Wear

All component wear rates are normal.

### Contamination

The water content is negligible. There is no indication of any contamination in the oil.

### Fluid Condition

The AN level is acceptable for this fluid. The condition of the oil is suitable for further service.

SAMPLE INFORMATION		method	limit/base	current	history1	history2
Sample Number	Client Info			<b>WC0597026</b>	WC0597142	---
Sample Date	Client Info			<b>12 Aug 2022</b>	03 Aug 2021	---
Machine Age	hrs	Client Info		<b>11046</b>	4277	---
Oil Age	hrs	Client Info		<b>11046</b>	0	---
Oil Changed	Client Info			<b>Not Changed</b>	N/A	---
Sample Status				<b>NORMAL</b>	NORMAL	---

WEAR METALS		method	limit/base	current	history1	history2
Iron	ppm	ASTM D5185m	>50	<b>1</b>	2	---
Chromium	ppm	ASTM D5185m	>10	<b>0</b>	0	---
Nickel	ppm	ASTM D5185m		<b>0</b>	0	---
Titanium	ppm	ASTM D5185m		<b>0</b>	0	---
Silver	ppm	ASTM D5185m		<b>0</b>	0	---
Aluminum	ppm	ASTM D5185m	>25	<b>&lt;1</b>	0	---
Lead	ppm	ASTM D5185m	>25	<b>&lt;1</b>	3	---
Copper	ppm	ASTM D5185m	>50	<b>&lt;1</b>	<1	---
Tin	ppm	ASTM D5185m	>15	<b>1</b>	<1	---
Antimony	ppm	ASTM D5185m		<b>---</b>	0	---
Vanadium	ppm	ASTM D5185m		<b>0</b>	0	---
Cadmium	ppm	ASTM D5185m		<b>0</b>	<1	---

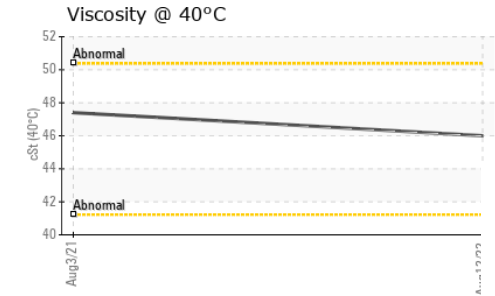
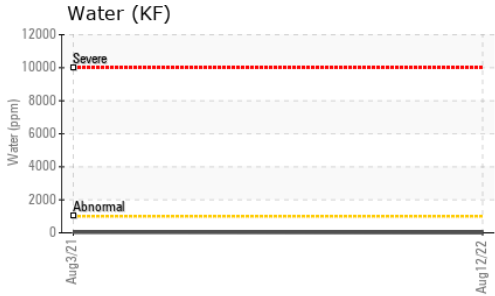
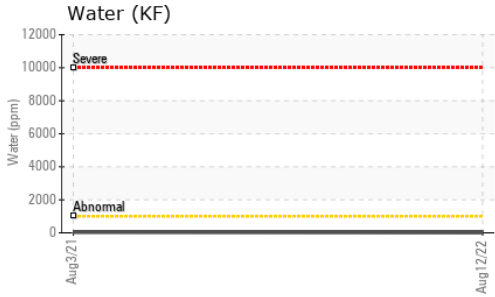
ADDITIVES		method	limit/base	current	history1	history2
Boron	ppm	ASTM D5185m		<b>0</b>	0	---
Barium	ppm	ASTM D5185m		<b>0</b>	0	---
Molybdenum	ppm	ASTM D5185m		<b>0</b>	<1	---
Manganese	ppm	ASTM D5185m		<b>0</b>	0	---
Magnesium	ppm	ASTM D5185m		<b>0</b>	0	---
Calcium	ppm	ASTM D5185m		<b>0</b>	0	---
Phosphorus	ppm	ASTM D5185m		<b>&lt;1</b>	0	---
Zinc	ppm	ASTM D5185m		<b>0</b>	0	---
Sulfur	ppm	ASTM D5185m		<b>0</b>	0	---

CONTAMINANTS		method	limit/base	current	history1	history2
Silicon	ppm	ASTM D5185m	>25	<b>6</b>	13	---
Sodium	ppm	ASTM D5185m		<b>0</b>	0	---
Potassium	ppm	ASTM D5185m	>20	<b>&lt;1</b>	0	---
Water	%	ASTM D6304	>0.1	<b>0.001</b>	0.003	---
ppm Water	ppm	ASTM D6304	>1000	<b>8.1</b>	31.6	---

FLUID DEGRADATION		method	limit/base	current	history1	history2
Acid Number (AN)	mg KOH/g	ASTM D8045		<b>0.014</b>	0.015	---



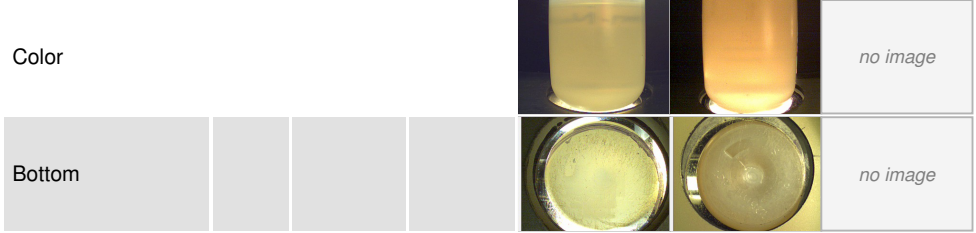
# OIL ANALYSIS REPORT



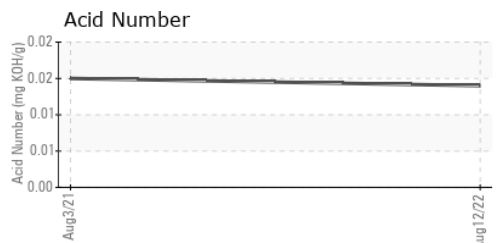
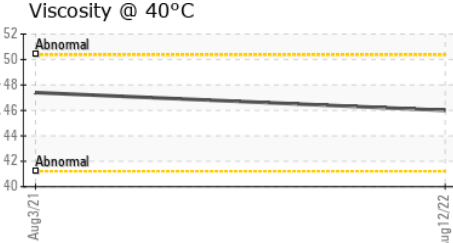
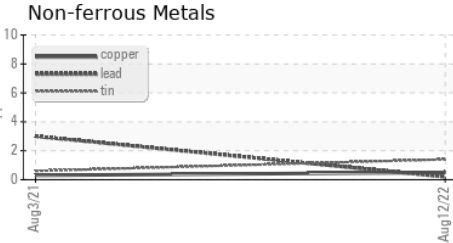
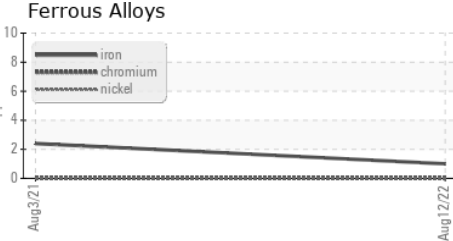
VISUAL	method	limit/base	current	history1	history2
White Metal	scalar	*Visual	NONE	NONE	---
Yellow Metal	scalar	*Visual	NONE	NONE	---
Precipitate	scalar	*Visual	NONE	NONE	---
Silt	scalar	*Visual	NONE	NONE	---
Debris	scalar	*Visual	NONE	NONE	---
Sand/Dirt	scalar	*Visual	NONE	NONE	---
Appearance	scalar	*Visual	NORML	NORML	---
Odor	scalar	*Visual	NORML	NORML	---
Emulsified Water	scalar	*Visual	>0.1	NEG	---
Free Water	scalar	*Visual		NEG	---

FLUID PROPERTIES	method	limit/base	current	history1	history2
Visc @ 40°C	cSt	ASTM D445	<b>46.0</b>	47.4	---

SAMPLE IMAGES	method	limit/base	current	history1	history2
---------------	--------	------------	---------	----------	----------



## GRAPHS



Certificate L2367

**Laboratory** : WearCheck USA - 501 Madison Ave., Cary, NC 27513  
**Sample No.** : WC0597026 **Received** : 01 Sep 2022  
**Lab Number** : **05632395** **Tested** : 02 Sep 2022  
**Unique Number** : 10116916 **Diagnosed** : 03 Sep 2022 - Don Baldrige  
**Test Package** : IND 2 ( Additional Tests: KF )

**CDS MECHANICAL SERVICES INC**  
 1654 CROFTON BLVD, SUITE 9  
 CROFTON, MD  
 US 21114  
 Contact: DAVID BEALE  
 DBEALE@CDSMECHANICAL.NET

To discuss this sample report, contact Customer Service at 1-800-237-1369.

\* - Denotes test methods that are outside of the ISO 17025 scope of accreditation.

Statements of conformity to specifications are based on the simple acceptance decision rule (JCGM 106:2012)

T:  
F: