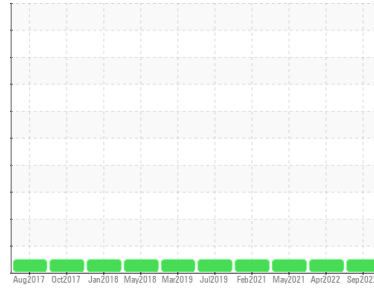




# OIL ANALYSIS REPORT

Sample Rating Trend

**NORMAL**



Machine Id  
**61Y221**  
 Component  
**Gearbox**  
 Fluid  
**NOT GIVEN (--- GAL)**

## DIAGNOSIS

### Recommendation

Little or no information is provided as to the component and lubricant being tested. Recommendations are therefore generic in nature and may not apply to the current application. Please forward information as to equipment type, reservoir capacity, lubricant type and any pertinent information to allow for a more accurate assessment. Resample at the next service interval to monitor. NOTE: Please provide information regarding reservoir capacity, filter type and micron rating with next sample. Please specify the brand, type, and viscosity of the oil on your next sample.

### Wear

All component wear rates are normal.

### Contamination

The water content is negligible. There is no indication of any contamination in the oil.

### Fluid Condition

The AN level is acceptable for this fluid. The condition of the oil is suitable for further service.

SAMPLE INFORMATION		method	limit/base	current	history1	history2
Sample Number	Client Info			<b>RP0021416</b>	RP0018448	RP0011562
Sample Date	Client Info			<b>05 Sep 2022</b>	21 Apr 2022	11 May 2021
Machine Age	hrs	Client Info		<b>0</b>	0	0
Oil Age	hrs	Client Info		<b>0</b>	0	0
Oil Changed	Client Info			<b>N/A</b>	N/A	N/A
Sample Status				<b>NORMAL</b>	NORMAL	NORMAL

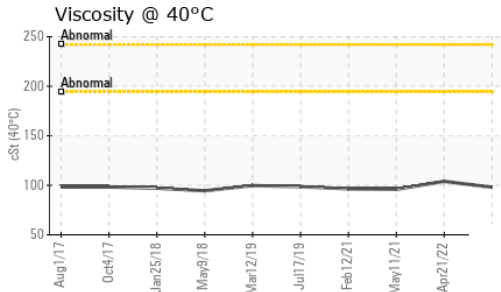
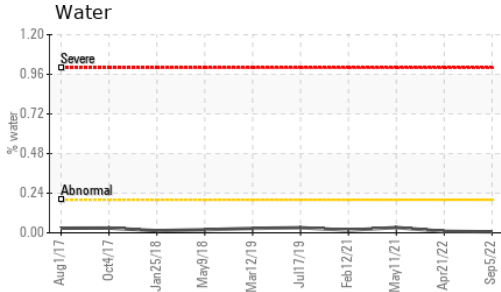
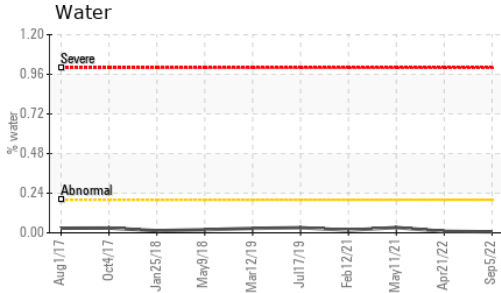
WEAR METALS		method	limit/base	current	history1	history2
Iron	ppm	ASTM D5185m	>200	<b>83</b>	106	27
Chromium	ppm	ASTM D5185m	>15	<b>&lt;1</b>	<1	<1
Nickel	ppm	ASTM D5185m	>15	<b>0</b>	<1	<1
Titanium	ppm	ASTM D5185m		<b>0</b>	<1	0
Silver	ppm	ASTM D5185m		<b>0</b>	0	1
Aluminum	ppm	ASTM D5185m	>25	<b>2</b>	2	0
Lead	ppm	ASTM D5185m	>100	<b>&lt;1</b>	0	0
Copper	ppm	ASTM D5185m	>200	<b>&lt;1</b>	<1	<1
Tin	ppm	ASTM D5185m	>25	<b>0</b>	<1	0
Antimony	ppm	ASTM D5185m		<b>---</b>	---	0
Vanadium	ppm	ASTM D5185m		<b>0</b>	0	0
Cadmium	ppm	ASTM D5185m		<b>&lt;1</b>	<1	0

ADDITIVES		method	limit/base	current	history1	history2
Boron	ppm	ASTM D5185m		<b>&lt;1</b>	<1	1
Barium	ppm	ASTM D5185m		<b>2</b>	0	0
Molybdenum	ppm	ASTM D5185m		<b>&lt;1</b>	<1	0
Manganese	ppm	ASTM D5185m		<b>&lt;1</b>	1	<1
Magnesium	ppm	ASTM D5185m		<b>6</b>	6	10
Calcium	ppm	ASTM D5185m		<b>7</b>	26	144
Phosphorus	ppm	ASTM D5185m		<b>314</b>	310	14
Zinc	ppm	ASTM D5185m		<b>259</b>	38	0

CONTAMINANTS		method	limit/base	current	history1	history2
Silicon	ppm	ASTM D5185m	>50	<b>6</b>	4	7
Sodium	ppm	ASTM D5185m		<b>0</b>	<1	0
Potassium	ppm	ASTM D5185m	>20	<b>&lt;1</b>	0	0
Water	%	ASTM D6304	>0.2	<b>0.006</b>	0.009	0.032
ppm Water	ppm	ASTM D6304	>2000	<b>60.4</b>	92.1	321.9

FLUID DEGRADATION		method	limit/base	current	history1	history2
Acid Number (AN)	mg KOH/g	ASTM D8045		<b>0.84</b>	0.97	0.312

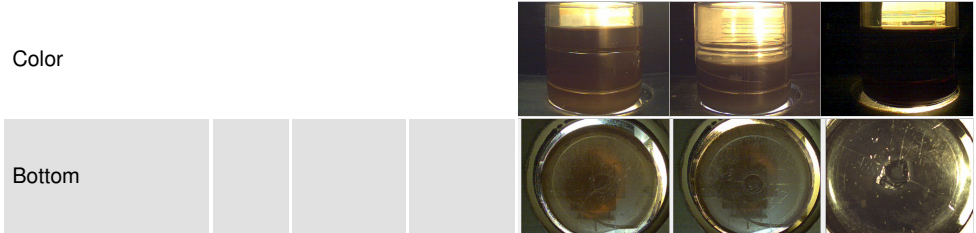
# OIL ANALYSIS REPORT



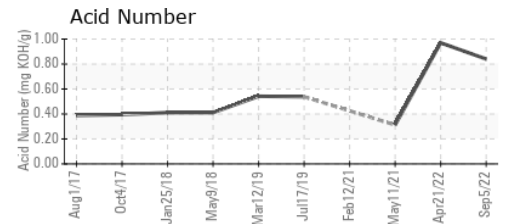
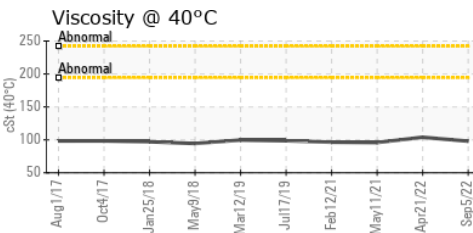
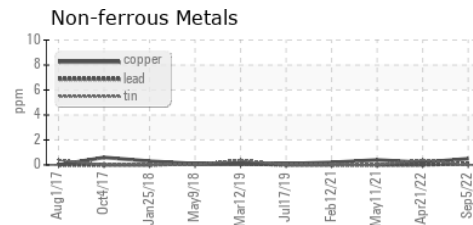
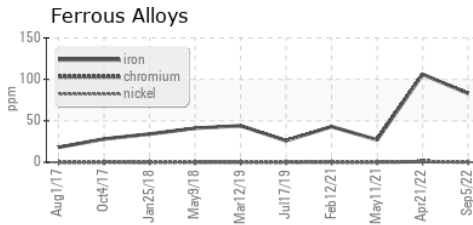
VISUAL	method	limit/base	current	history1	history2
White Metal	scalar	*Visual	NONE	<b>LIGHT</b>	LIGHT
Yellow Metal	scalar	*Visual	NONE	<b>NONE</b>	NONE
Precipitate	scalar	*Visual	NONE	<b>NONE</b>	NONE
Silt	scalar	*Visual	NONE	<b>NONE</b>	NONE
Debris	scalar	*Visual	NONE	<b>LIGHT</b>	NONE
Sand/Dirt	scalar	*Visual	NONE	<b>NONE</b>	NONE
Appearance	scalar	*Visual	NORML	<b>NORML</b>	NORML
Odor	scalar	*Visual	NORML	<b>NORML</b>	NORML
Emulsified Water	scalar	*Visual	>0.2	<b>NEG</b>	NEG
Free Water	scalar	*Visual		<b>NEG</b>	NEG

FLUID PROPERTIES	method	limit/base	current	history1	history2
Visc @ 40°C	cSt	ASTM D445	<b>98.0</b>	104	95.9

SAMPLE IMAGES	method	limit/base	current	history1	history2
---------------	--------	------------	---------	----------	----------



## GRAPHS



Certificate L2367

**Laboratory** : WearCheck USA - 501 Madison Ave., Cary, NC 27513  
**Sample No.** : RP0021416 **Received** : 02 Sep 2022  
**Lab Number** : 05633677 **Diagnosed** : 06 Sep 2022  
**Unique Number** : 10118198 **Diagnostician** : Wes Davis  
**Test Package** : IND 2

To discuss this sample report, contact Customer Service at 1-800-237-1369.

\* - Denotes test methods that are outside of the ISO 17025 scope of accreditation.

Statements of conformity to specifications are based on the simple acceptance decision rule (JCGM 106:2012)

**SOLVAY**  
 1275 AIRLINE HWY  
 BATON ROUGE, LA  
 US 70805

Contact: MICHEAL ROJAS  
 micheal.rojas@solvay.com

T: (225)573-3664

F: x: