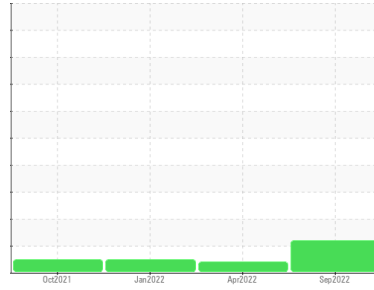




PROBLEM SUMMARY

Sample Rating Trend

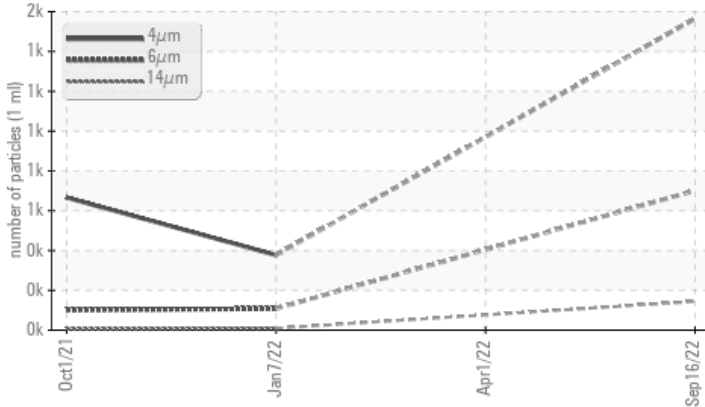


Machine Id
6420064 (S/N 1076)

Component
Compressor
Fluid
KAESER SIGMA (OEM) S-460 (--- GAL)

COMPONENT CONDITION SUMMARY

▲ Particle Trend



RECOMMENDATION

No corrective action is recommended at this time. Oil and filter change at the time of sampling has been noted. Resample at the next service interval to monitor.

PROBLEMATIC TEST RESULTS

Sample Status			ATTENTION	ABNORMAL	NORMAL
Particles >14µm	ASTM D7647	>80	▲ 144	---	9
Particles >21µm	ASTM D7647	>20	▲ 35	---	0
Oil Cleanliness	ISO 4406 (c)	>--/17/13	▲ 18/17/14	---	14/10

Customer Id: KRAMIDOH01
Sample No.: KC95187
Lab Number: 05647882
Test Package: IND 2



To manage this report scan the QR code

To discuss the diagnosis or test data:
Jonathan Hester +1 919-379-4092 x4092
jhester@wearcheckusa.com

To change component or sample information:
Customer Service +1 1-800-237-1369
customerservice@wearcheck.com

RECOMMENDED ACTIONS

Action	Status	Date	Done By	Description
Change Fluid	---	---	?	Oil and filter change at the time of sampling has been noted.
Change Filter	---	---	?	Oil and filter change at the time of sampling has been noted.

HISTORICAL DIAGNOSIS

01 Apr 2022 Diag: Don Baldrige

VIS DEBRIS



We recommend you service the filters on this component. Resample at the next service interval to monitor. We were unable to perform a particle count due to a high concentration of particles present in this sample. All component wear rates are normal. Moderate concentration of visible dirt/debris present in the oil. The AN level is acceptable for this fluid. The condition of the oil is suitable for further service.

view report



07 Jan 2022 Diag: Angela Borella

NORMAL



Resample at the next service interval to monitor. All component wear rates are normal. There is no indication of any contamination in the oil. The amount and size of particulates present in the system are acceptable. The AN level is acceptable for this fluid. The condition of the oil is suitable for further service.

view report



01 Oct 2021 Diag: Don Baldrige

NORMAL



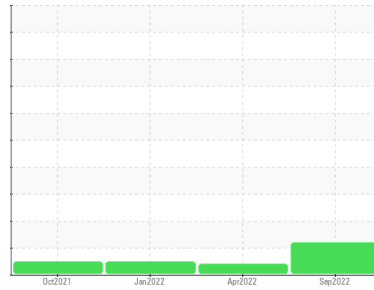
Resample at the next service interval to monitor. All component wear rates are normal. There is no indication of any contamination in the oil. The amount and size of particulates present in the system are acceptable. The AN level is acceptable for this fluid. The condition of the oil is suitable for further service.

view report



OIL ANALYSIS REPORT

Sample Rating Trend



ISO



Machine Id
6420064 (S/N 1076)

Component

Compressor

Fluid

KAESER SIGMA (OEM) S-460 (--- GAL)

DIAGNOSIS

Recommendation

No corrective action is recommended at this time. Oil and filter change at the time of sampling has been noted. Resample at the next service interval to monitor.

Wear

All component wear rates are normal.

Contamination

There is a moderate amount of particulates present in the oil.

Fluid Condition

The AN level is acceptable for this fluid. The condition of the oil is suitable for further service.

SAMPLE INFORMATION		method	limit/base	current	history1	history2
Sample Number	Client Info			KC95187	KC96249	KC95879
Sample Date	Client Info			16 Sep 2022	01 Apr 2022	07 Jan 2022
Machine Age	hrs	Client Info		33983	30106	28095
Oil Age	hrs	Client Info		3872	2011	5785
Oil Changed	Client Info			Changed	Not Changd	Changed
Sample Status				ATTENTION	ABNORMAL	NORMAL

WEAR METALS		method	limit/base	current	history1	history2
Iron	ppm	ASTM D5185m	>50	0	0	0
Chromium	ppm	ASTM D5185m	>10	0	0	0
Nickel	ppm	ASTM D5185m	>3	0	0	0
Titanium	ppm	ASTM D5185m	>3	0	0	0
Silver	ppm	ASTM D5185m	>2	<1	0	<1
Aluminum	ppm	ASTM D5185m	>10	0	0	0
Lead	ppm	ASTM D5185m	>10	0	0	0
Copper	ppm	ASTM D5185m	>50	8	4	6
Tin	ppm	ASTM D5185m	>10	0	0	<1
Antimony	ppm	ASTM D5185m		---	---	0
Vanadium	ppm	ASTM D5185m		0	0	0
Cadmium	ppm	ASTM D5185m		0	0	0

ADDITIVES		method	limit/base	current	history1	history2
Boron	ppm	ASTM D5185m		0	0	17
Barium	ppm	ASTM D5185m	90	0	28	0
Molybdenum	ppm	ASTM D5185m		0	0	0
Manganese	ppm	ASTM D5185m		0	0	0
Magnesium	ppm	ASTM D5185m	90	<1	64	<1
Calcium	ppm	ASTM D5185m	2	0	0	0
Phosphorus	ppm	ASTM D5185m		2	0	<1
Zinc	ppm	ASTM D5185m		0	0	0

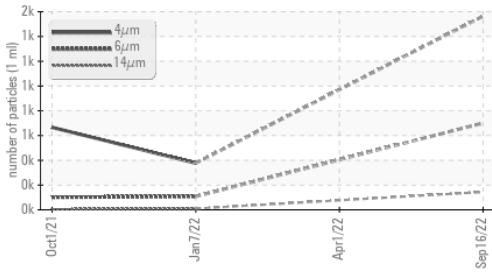
CONTAMINANTS		method	limit/base	current	history1	history2
Silicon	ppm	ASTM D5185m	>25	<1	0	<1
Sodium	ppm	ASTM D5185m		0	21	<1
Potassium	ppm	ASTM D5185m	>20	<1	6	0
Water	%	ASTM D6304	>0.05	0.009	0.014	0.003
ppm Water	ppm	ASTM D6304	>500	90.5	145.5	36.2

FLUID CLEANLINESS		method	limit/base	current	history1	history2
Particles >4µm		ASTM D7647		1564	---	377
Particles >6µm		ASTM D7647	>1300	701	---	108
Particles >14µm		ASTM D7647	>80	▲ 144	---	9
Particles >21µm		ASTM D7647	>20	▲ 35	---	0
Particles >38µm		ASTM D7647	>4	2	---	0
Particles >71µm		ASTM D7647	>3	0	---	0
Oil Cleanliness		ISO 4406 (c)	>--/17/13	▲ 18/17/14	---	14/10

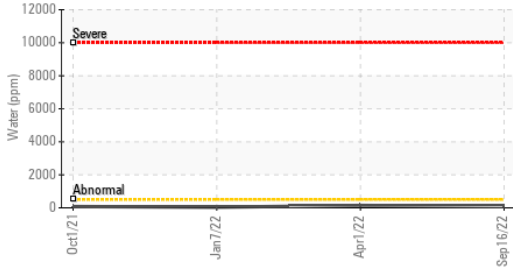
FLUID DEGRADATION		method	limit/base	current	history1	history2
Acid Number (AN)	mg KOH/g	ASTM D8045	0.4	0.50	0.48	0.54

OIL ANALYSIS REPORT

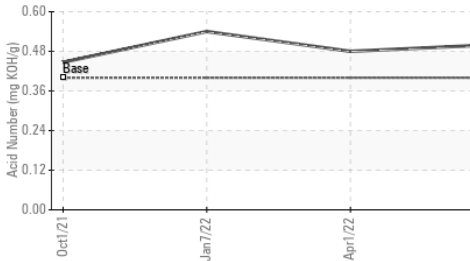
▲ Particle Trend



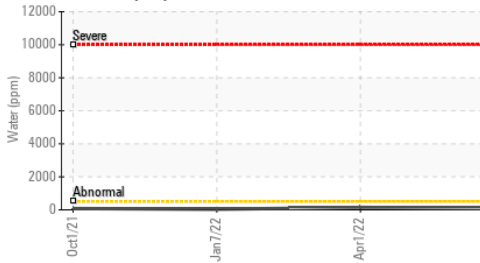
Water (KF)



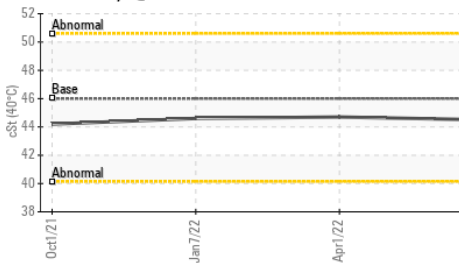
Acid Number



Water (KF)



Viscosity @ 40°C

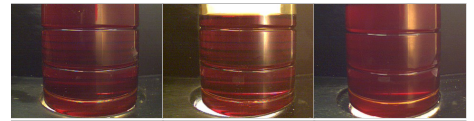


PARAMETER	method	limit/base	current	history1	history2
White Metal	scalar	*Visual	NONE	NONE	NONE
Yellow Metal	scalar	*Visual	NONE	NONE	NONE
Precipitate	scalar	*Visual	NONE	NONE	NONE
Silt	scalar	*Visual	NONE	NONE	NONE
Debris	scalar	*Visual	NONE	▲ MODER	NONE
Sand/Dirt	scalar	*Visual	NONE	NONE	NONE
Appearance	scalar	*Visual	NORML	NORML	NORML
Odor	scalar	*Visual	NORML	NORML	NORML
Emulsified Water	scalar	*Visual	>0.05	NEG	NEG
Free Water	scalar	*Visual		NEG	NEG

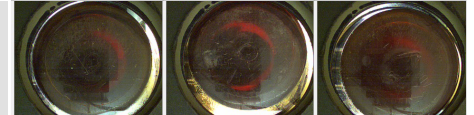
FLUID PROPERTIES	method	limit/base	current	history1	history2
Visc @ 40°C	cSt	ASTM D445	46	44.5	44.7

SAMPLE IMAGES	method	limit/base	current	history1	history2
---------------	--------	------------	---------	----------	----------

Color

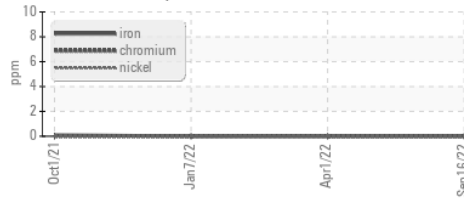


Bottom

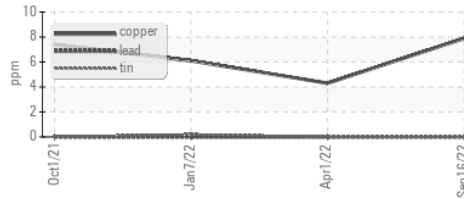


GRAPHS

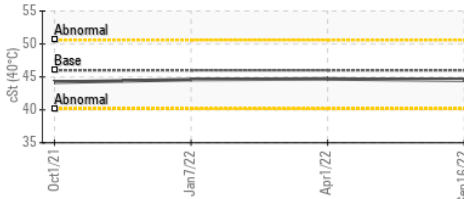
Ferrous Alloys



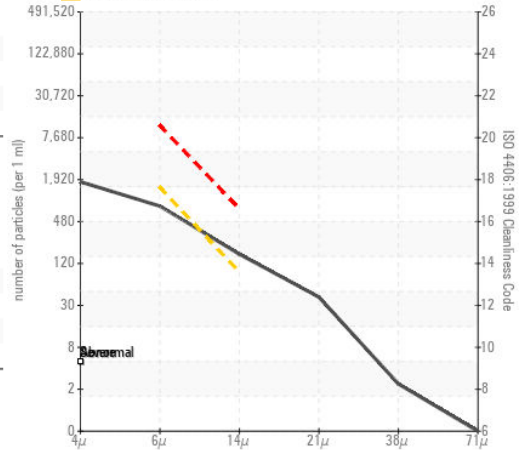
Non-ferrous Metals



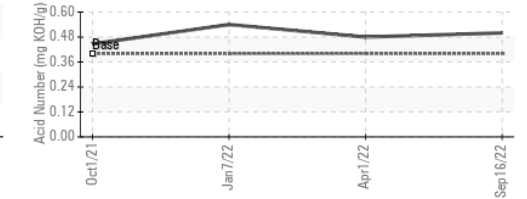
Viscosity @ 40°C



▲ Particle Count



Acid Number



Certificate L2367

Laboratory : WearCheck USA - 501 Madison Ave., Cary, NC 27513
 Sample No. : KC95187
 Lab Number : 05647882
 Unique Number : 10142421
 Test Package : IND 2
 Received : 21 Sep 2022
 Diagnosed : 22 Sep 2022
 Diagnostician : Jonathan Hester

KRAFTMAID PLT 1
 16052 INDUSTRIAL PKWY
 MIDDLEFIELD, OH
 US 44062
 Contact: Service Manager

To discuss this sample report, contact Customer Service at 1-800-237-1369.

* - Denotes test methods that are outside of the ISO 17025 scope of accreditation.

Statements of conformity to specifications are based on the simple acceptance decision rule (JCGM 106:2012)

T:
F: