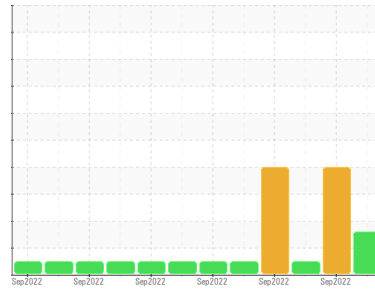




# COOLANT REPORT

Sample Rating Trend



## ADDITIVES



Area  
**WCLSNC**  
 Machine Id  
**QC COOL ELC NC 09012022**  
 Component  
**Coolant**  
 Fluid  
**CAT EXTENDED LIFE COOLANT (ELC) (--- GAL)**

### DIAGNOSIS

SAMPLE INFORMATION		method	limit/base	current	history1	history2
Sample Number	Client Info			<b>WC0739280</b>	WC0739279	WC0739278
Sample Date	Client Info			<b>23 Sep 2022</b>	22 Sep 2022	21 Sep 2022
Machine Age	hrs	Client Info		<b>0</b>	0	0
Oil Age	hrs	Client Info		<b>0</b>	0	0
Oil Changed	Client Info			<b>N/A</b>	N/A	N/A
Sample Status				<b>ATTENTION</b>	SEVERE	NORMAL

PHYSICAL TEST RESULTS		method	limit/base	current	history1	history2
Specific Gravity		*ASTM D1298		<b>1.067</b>	1.067	1.067
pH	Scale 0-14	ASTM D1287		<b>8.18</b>	8.21	8.16
Nitrites	ppm	AP-053:2009		<b>676</b>	712	712
Reserve Alkalinity	Scale 0-20	*ASTM D1121		<b>---</b>	---	---
Percentage Glycol	%	ASTM D3321		<b>49.7</b>	49.8	49.8
Freezing Point	°F	ASTM D3321		<b>-33</b>	-33	-33
Total Dissolved Solids				<b>361.0</b>	369.5	334.5
Carboxylate				<b>pass</b>	fail	pass

CORROSION INHIBITORS		method	limit/base	current	history1	history2
Silicon	ppm	ASTM D6130	0	<b>18</b>	16	15
Phosphorus	ppm	ASTM D6130	0	<b>33</b>	34	0
Boron	ppm	ASTM D6130	0	<b>0</b>	0	0
Molybdenum	ppm	ASTM D6130	950	<b>&lt;1</b>	1046	1008

CORROSION		method	limit/base	current	history1	history2
Iron	ppm	ASTM D6130	>15	<b>0</b>	0	0
Aluminum	ppm	ASTM D6130	>10	<b>0</b>	<1	0
Copper	ppm	ASTM D6130	>10	<b>1</b>	<1	<1
Lead	ppm	ASTM D6130	>10	<b>0</b>	0	<1
Tin	ppm	ASTM D6130	>10	<b>0</b>	0	0
Zinc	ppm	ASTM D6130		<b>&lt;1</b>	0	0

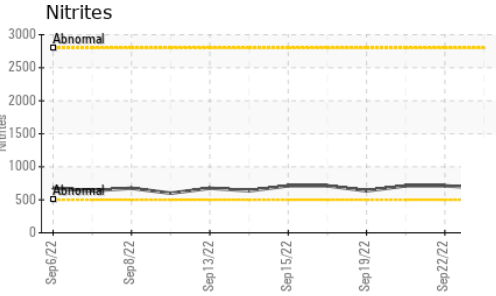
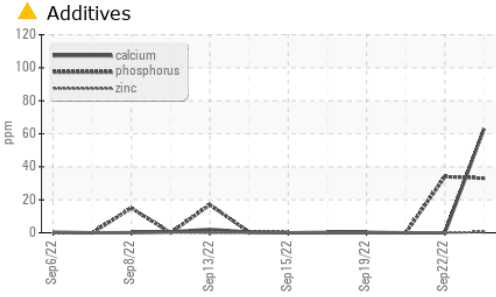
CONTAMINANTS		method	limit/base	current	history1	history2
Chlorine	ppm	ASTM D6130		<b>13</b>	1	0

CARRIER SALTS		method	limit/base	current	history1	history2
Sodium	ppm	ASTM D6130		<b>11</b>	3102	3062
Potassium	ppm	ASTM D6130		<b>244</b>	16	24

SCALE POTENTIAL		method	limit/base	current	history1	history2
Calcium	ppm	ASTM D6130		<b>▲ 63</b>	0	0
Magnesium	ppm	ASTM D6130		<b>▲ 27</b>	0	0

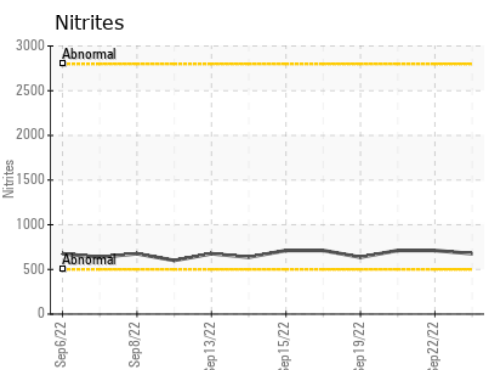
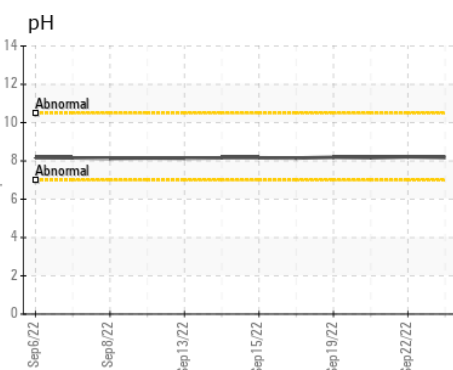
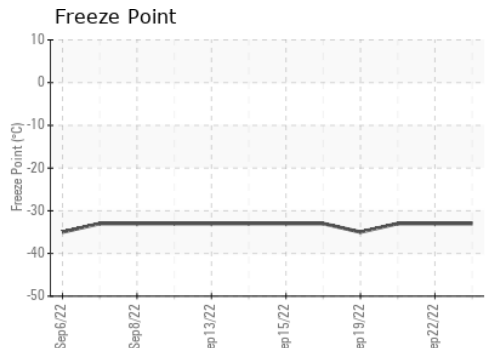
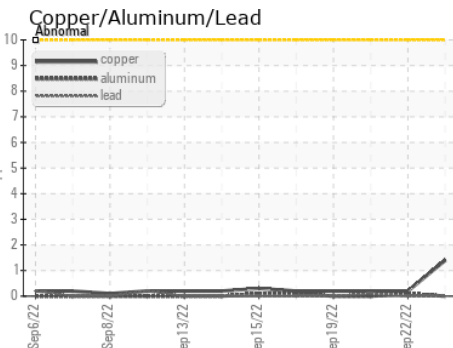
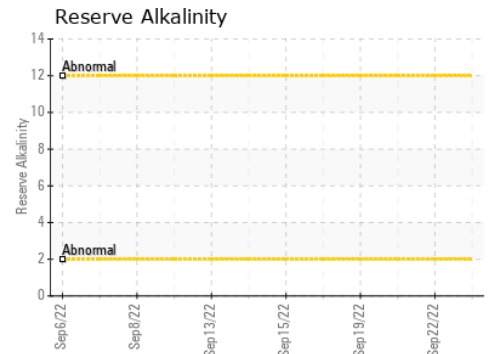
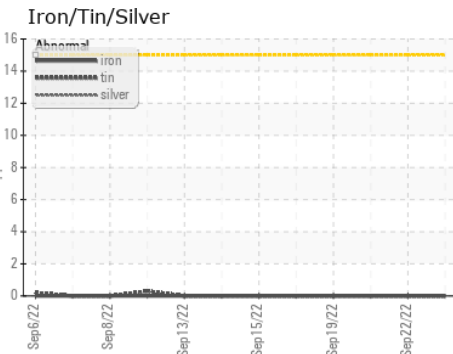


# COOLANT REPORT



VISUAL	method	limit/base	current	history1	history2
Coolant Color	*Visual		Red	Red	LtRed
Coolant Appearance	*Visual	Clear	normal	normal	normal
Color					
Bottom					

## GRAPHS



**Laboratory** : WearCheck USA - 501 Madison Ave., Cary, NC 27513  
**Sample No.** : WC0739280      **Received** : 23 Sep 2022  
**Lab Number** : 05649606      **Diagnosed** : 02 Oct 2023  
**Unique Number** : 10144145      **Diagnostician** : System  
**Test Package** : COOL- ( Additional Tests: COOL, ICP )

**WEARCHECK LUBRICATION SERVICES QA ACCOUNT**  
 501 Madison Ave  
 Cary, NC  
 US 27513  
 Contact: WCLS CARY NC

To discuss this sample report, contact Customer Service at 1-800-237-1369.  
 \* - Denotes test methods that are outside of the ISO 17025 scope of accreditation.  
 Statements of conformity to specifications are based on the simple acceptance decision rule (JCGM 106:2012)

T: (919)379-4102  
 F: (919)379-4050