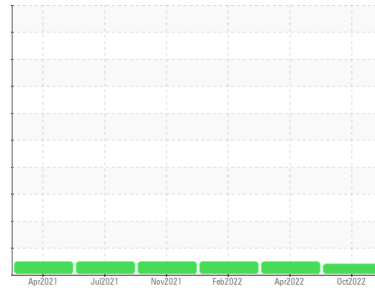




OIL ANALYSIS REPORT

Sample Rating Trend



VISCOSITY



Machine Id

UNCOILER

Component

Gearbox

Fluid

CHEVRON MEROPA 150 (17 GAL)

DIAGNOSIS

▲ Recommendation

Resample at the next service interval to monitor.

Wear

All component wear rates are normal.

Contamination

There is no indication of any contamination in the oil.

▲ Fluid Condition

Viscosity of sample indicates oil is within ISO 100 range, advise investigate. Confirm oil type. The AN level is acceptable for this fluid.

SAMPLE INFORMATION		method	limit/base	current	history1	history2
Sample Number	Client Info			WC0701723	WC0691992	WC0653747
Sample Date	Client Info			08 Oct 2022	27 Apr 2022	17 Feb 2022
Machine Age	mths	Client Info		0	0	0
Oil Age	mths	Client Info		0	0	0
Oil Changed	Client Info			N/A	Not Changd	Not Changd
Sample Status				ATTENTION	NORMAL	NORMAL

WEAR METALS		method	limit/base	current	history1	history2
Iron	ppm	ASTM D5185m	>200	27	28	24
Chromium	ppm	ASTM D5185m	>15	<1	0	0
Nickel	ppm	ASTM D5185m	>15	0	0	0
Titanium	ppm	ASTM D5185m		0	0	0
Silver	ppm	ASTM D5185m		0	<1	<1
Aluminum	ppm	ASTM D5185m	>25	0	<1	0
Lead	ppm	ASTM D5185m	>100	0	<1	0
Copper	ppm	ASTM D5185m	>200	<1	<1	<1
Tin	ppm	ASTM D5185m	>25	0	0	0
Antimony	ppm	ASTM D5185m		---	---	0
Vanadium	ppm	ASTM D5185m		0	0	0
Cadmium	ppm	ASTM D5185m		0	0	0

ADDITIVES		method	limit/base	current	history1	history2
Boron	ppm	ASTM D5185m		22	29	31
Barium	ppm	ASTM D5185m		1	0	0
Molybdenum	ppm	ASTM D5185m		<1	<1	<1
Manganese	ppm	ASTM D5185m		<1	<1	<1
Magnesium	ppm	ASTM D5185m		1	1	0
Calcium	ppm	ASTM D5185m		13	8	9
Phosphorus	ppm	ASTM D5185m		251	241	271
Zinc	ppm	ASTM D5185m		68	17	12
Sulfur	ppm	ASTM D5185m		6314	5543	6076

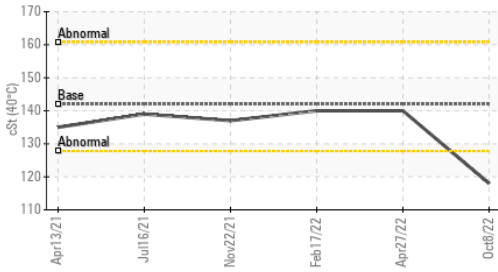
CONTAMINANTS		method	limit/base	current	history1	history2
Silicon	ppm	ASTM D5185m	>50	2	2	2
Sodium	ppm	ASTM D5185m		0	0	<1
Potassium	ppm	ASTM D5185m	>20	<1	<1	0
Water	%	ASTM D6304	>0.2	NEG	NEG	NEG

FLUID DEGRADATION		method	limit/base	current	history1	history2
Acid Number (AN)	mg KOH/g	ASTM D8045		0.59	0.70	0.65

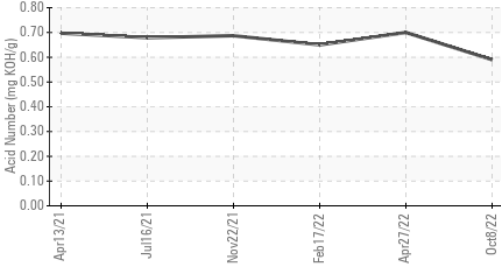


OIL ANALYSIS REPORT

▲ Viscosity @ 40°C



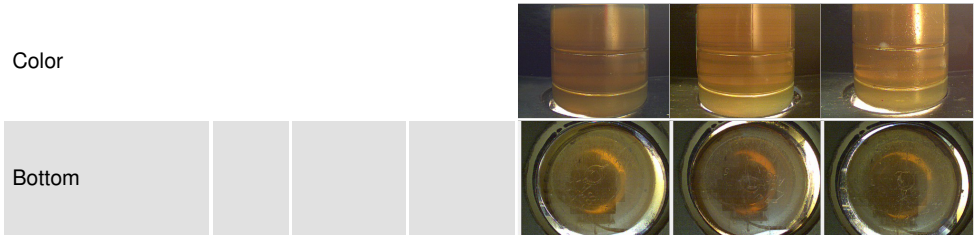
Acid Number



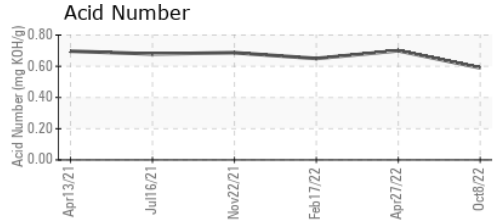
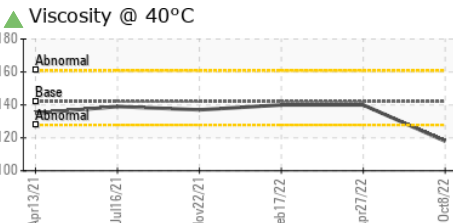
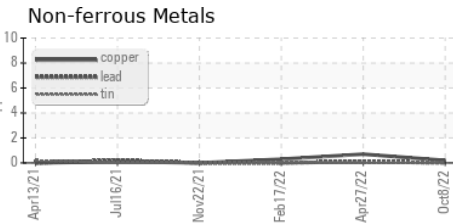
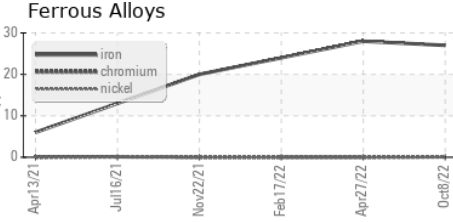
VISUAL	method	limit/base	current	history1	history2
White Metal	scalar	*Visual	NONE	MODER	LIGHT
Yellow Metal	scalar	*Visual	NONE	NONE	NONE
Precipitate	scalar	*Visual	NONE	NONE	NONE
Silt	scalar	*Visual	NONE	NONE	NONE
Debris	scalar	*Visual	NONE	NONE	NONE
Sand/Dirt	scalar	*Visual	NONE	NONE	NONE
Appearance	scalar	*Visual	NORML	NORML	NORML
Odor	scalar	*Visual	NORML	NORML	NORML
Emulsified Water	scalar	*Visual	>0.2	NEG	NEG
Free Water	scalar	*Visual		NEG	NEG

FLUID PROPERTIES	method	limit/base	current	history1	history2
Visc @ 40°C	cSt	ASTM D445 142	▲ 118.0	140	140

SAMPLE IMAGES	method	limit/base	current	history1	history2
---------------	--------	------------	---------	----------	----------



GRAPHS



Certificate L2367

Laboratory : WearCheck USA - 501 Madison Ave., Cary, NC 27513
 Sample No. : WC0701723
 Lab Number : 05672345
 Unique Number : 10181915
 Test Package : PLANT

ALL METALS PROCESSING & LOGISTICS
 100 ALL METALS DR
 CARTERSVILLE, GA
 US 30120
 Contact: JASON WEISS
 jasonweiss@allmetals.com
 T: (770)427-7379
 F:

To discuss this sample report, contact Customer Service at 1-800-237-1369.

* - Denotes test methods that are outside of the ISO 17025 scope of accreditation.

Statements of conformity to specifications are based on the simple acceptance decision rule (JCGM 106:2012)