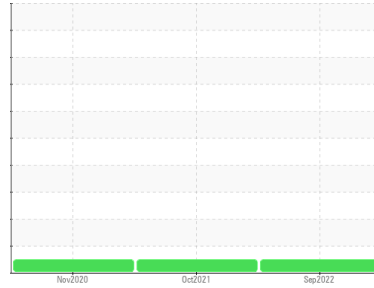




# OIL ANALYSIS REPORT

Sample Rating Trend

**NORMAL**



Machine Id  
**ACECO RWSB-S 10061375 - BRIDGE SOUTH (S/N 3219)**

Component  
**Gearbox**

Fluid  
**SHELL OMALA S2 GX 220 (--- GAL)**

## DIAGNOSIS

### Recommendation

Resample at the next service interval to monitor.  
NOTE: Please provide information regarding reservoir capacity, filter type and micron rating with next sample.

### Wear

All component wear rates are normal.

### Contamination

There is no indication of any contamination in the oil.

### Fluid Condition

The AN level is acceptable for this fluid. The condition of the oil is suitable for further service.

SAMPLE INFORMATION		method	limit/base	current	history1	history2
Sample Number	Client Info			<b>WC0657480</b>	WC0424945	WC0495720
Sample Date	Client Info			<b>27 Sep 2022</b>	05 Oct 2021	18 Nov 2020
Machine Age	mths	Client Info		<b>0</b>	0	0
Oil Age	mths	Client Info		<b>36</b>	24	13
Oil Changed	Client Info			<b>Not Changed</b>	Not Changed	Not Changed
Sample Status				<b>NORMAL</b>	NORMAL	NORMAL

WEAR METALS		method	limit/base	current	history1	history2
Iron	ppm	ASTM D5185m	>200	<b>&lt;1</b>	<1	<1
Chromium	ppm	ASTM D5185m	>15	<b>0</b>	0	0
Nickel	ppm	ASTM D5185m	>15	<b>0</b>	0	<1
Titanium	ppm	ASTM D5185m		<b>0</b>	0	0
Silver	ppm	ASTM D5185m		<b>0</b>	<1	0
Aluminum	ppm	ASTM D5185m	>25	<b>0</b>	<1	0
Lead	ppm	ASTM D5185m	>100	<b>0</b>	0	2
Copper	ppm	ASTM D5185m	>200	<b>0</b>	<1	0
Tin	ppm	ASTM D5185m	>25	<b>0</b>	0	0
Antimony	ppm	ASTM D5185m		<b>---</b>	0	0
Vanadium	ppm	ASTM D5185m		<b>0</b>	0	0
Cadmium	ppm	ASTM D5185m		<b>0</b>	0	0

ADDITIVES		method	limit/base	current	history1	history2
Boron	ppm	ASTM D5185m	6.2	<b>&lt;1</b>	9	<1
Barium	ppm	ASTM D5185m	0.0	<b>2</b>	0	0
Molybdenum	ppm	ASTM D5185m	0	<b>&lt;1</b>	<1	<1
Manganese	ppm	ASTM D5185m		<b>0</b>	0	0
Magnesium	ppm	ASTM D5185m	0	<b>1</b>	2	0
Calcium	ppm	ASTM D5185m	0.0	<b>2</b>	3	<1
Phosphorus	ppm	ASTM D5185m	290	<b>249</b>	262	246
Zinc	ppm	ASTM D5185m	3.8	<b>9</b>	8	6
Sulfur	ppm	ASTM D5185m	8167	<b>12613</b>	9769	9039

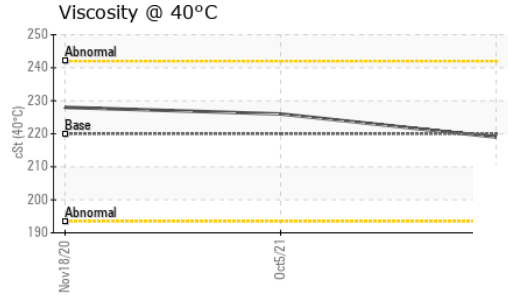
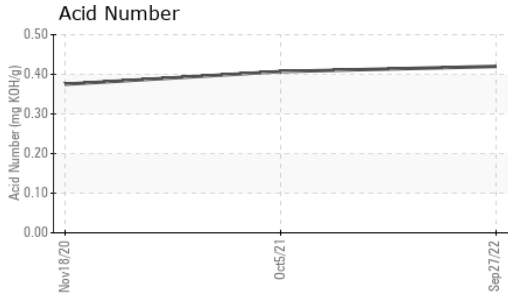
CONTAMINANTS		method	limit/base	current	history1	history2
Silicon	ppm	ASTM D5185m	>50	<b>&lt;1</b>	<1	<1
Sodium	ppm	ASTM D5185m		<b>0</b>	<1	<1
Potassium	ppm	ASTM D5185m	>20	<b>1</b>	0	0

FLUID DEGRADATION		method	limit/base	current	history1	history2
Acid Number (AN)	mg KOH/g	ASTM D8045		<b>0.42</b>	0.407	0.375

VISUAL		method	limit/base	current	history1	history2
White Metal	scalar	*Visual	NONE	<b>NONE</b>	NONE	NONE
Yellow Metal	scalar	*Visual	NONE	<b>NONE</b>	NONE	NONE
Precipitate	scalar	*Visual	NONE	<b>NONE</b>	NONE	NONE
Silt	scalar	*Visual	NONE	<b>NONE</b>	NONE	NONE
Debris	scalar	*Visual	NONE	<b>NONE</b>	NONE	NONE
Sand/Dirt	scalar	*Visual	NONE	<b>NONE</b>	NONE	NONE
Appearance	scalar	*Visual	NORML	<b>NORML</b>	NORML	NORML
Odor	scalar	*Visual	NORML	<b>NORML</b>	NORML	NORML
Emulsified Water	scalar	*Visual	>0.2	<b>NEG</b>	NEG	NEG
Free Water	scalar	*Visual		<b>NEG</b>	NEG	NEG

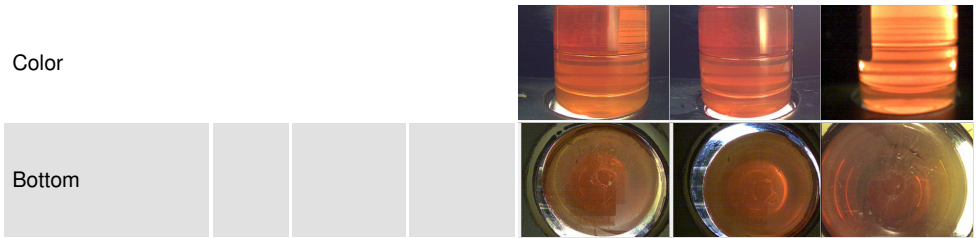


# OIL ANALYSIS REPORT

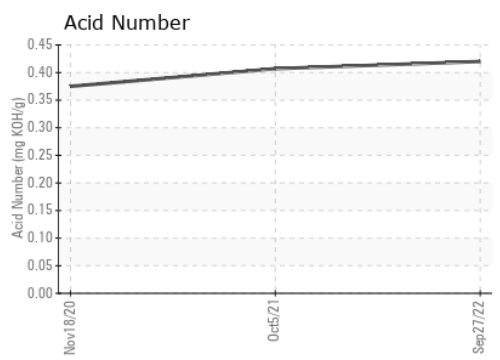
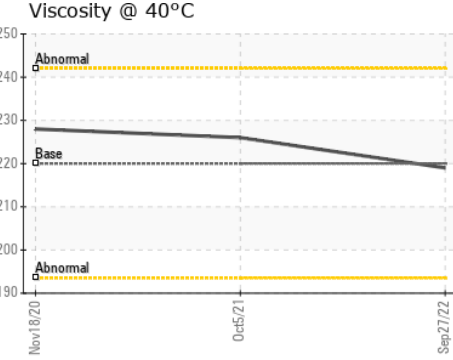
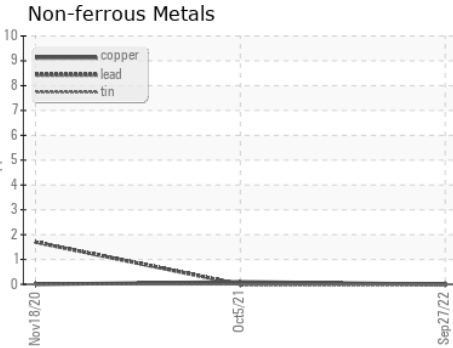
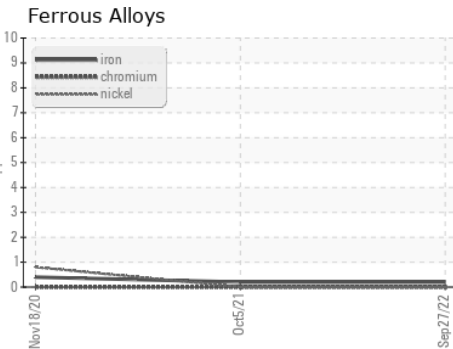


FLUID PROPERTIES	method	limit/base	current	history1	history2	
Visc @ 40°C	cSt	ASTM D445	220	<b>219</b>	226	228

SAMPLE IMAGES	method	limit/base	current	history1	history2
---------------	--------	------------	---------	----------	----------



## GRAPHS



**Laboratory** : WearCheck USA - 501 Madison Ave., Cary, NC 27513  
**Sample No.** : WC0657480      **Received** : 24 Oct 2022  
**Lab Number** : 05674421      **Diagnosed** : 25 Oct 2022  
**Unique Number** : 10188992      **Diagnostician** : Wes Davis  
**Test Package** : IND 2

**FLUOR MARINE PROPULSION LLC**  
 2401 RIVER RD  
 SCHENECTADY, NY  
 US 12309  
 Contact: Service Manager

To discuss this sample report, contact Customer Service at 1-800-237-1369.  
 \* - Denotes test methods that are outside of the ISO 17025 scope of accreditation.  
 Statements of conformity to specifications are based on the simple acceptance decision rule (JCGM 106:2012)