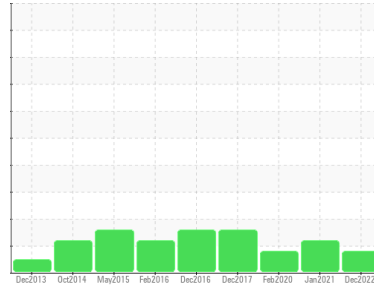




Area
Molding
 Machine Id
PRESS 28 (S/N 61018094)
 Component
Hydraulic System
 Fluid
SHELL TELLUS S3 M 46 (300 GAL)



DIAGNOSIS

- Recommendation**
No corrective action is recommended at this time. Resample at the next service interval to monitor.
- Wear**
All component wear rates are normal.
- Contamination**
There is a moderate amount of silt (particulates < 14 microns in size) present in the oil.
- Fluid Condition**
The AN level is acceptable for this fluid. The condition of the oil is suitable for further service.

SAMPLE INFORMATION

	method	limit/base	current	history1	history2
Sample Number	Client Info		ST44382	ST40912	ST39380
Sample Date	Client Info		01 Dec 2022	03 Jan 2021	13 Feb 2020
Machine Age	hrs	Client Info	0	0	0
Oil Age	hrs	Client Info	0	0	0
Oil Changed	Client Info		N/A	N/A	N/A
Sample Status			ATTENTION	ABNORMAL	ATTENTION

WEAR METALS

	method	limit/base	current	history1	history2
Iron	ppm	ASTM D5185m >40	3	3	2
Chromium	ppm	ASTM D5185m >4	<1	<1	<1
Nickel	ppm	ASTM D5185m >20	0	0	0
Titanium	ppm	ASTM D5185m	0	0	0
Silver	ppm	ASTM D5185m	0	0	0
Aluminum	ppm	ASTM D5185m >4	0	0	0
Lead	ppm	ASTM D5185m >10	0	0	0
Copper	ppm	ASTM D5185m >60	<1	<1	<1
Tin	ppm	ASTM D5185m >4	0	0	0
Antimony	ppm	ASTM D5185m	---	0	0
Vanadium	ppm	ASTM D5185m	0	0	0
Cadmium	ppm	ASTM D5185m	0	0	0

ADDITIVES

	method	limit/base	current	history1	history2
Boron	ppm	ASTM D5185m 0	0	0	0
Barium	ppm	ASTM D5185m 3	0	0	0
Molybdenum	ppm	ASTM D5185m 0	0	0	<1
Manganese	ppm	ASTM D5185m	<1	0	0
Magnesium	ppm	ASTM D5185m 0	0	0	0
Calcium	ppm	ASTM D5185m 0	35	36	33
Phosphorus	ppm	ASTM D5185m 106	60	63	72
Zinc	ppm	ASTM D5185m 0	4	0	0
Sulfur	ppm	ASTM D5185m	531	399	593

CONTAMINANTS

	method	limit/base	current	history1	history2
Silicon	ppm	ASTM D5185m >20	0	<1	<1
Sodium	ppm	ASTM D5185m	1	0	0
Potassium	ppm	ASTM D5185m >20	0	0	0
Water	%	ASTM D6304 >0.05	0.003	0.001	0.001
ppm Water	ppm	ASTM D6304 >500	36.3	14.5	18.4

FLUID CLEANLINESS

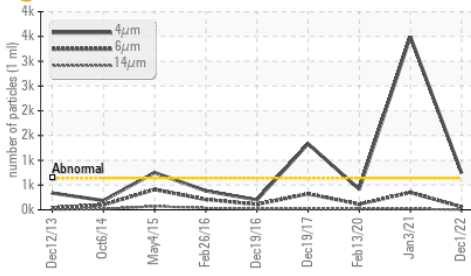
	method	limit/base	current	history1	history2
Particles >4µm	ASTM D7647	>640	741	3496	415
Particles >6µm	ASTM D7647	>80	58	350	112
Particles >14µm	ASTM D7647	>10	3	19	14
Particles >21µm	ASTM D7647	>3	2	4	3
Particles >38µm	ASTM D7647	>3	0	0	0
Particles >71µm	ASTM D7647	>3	0	0	0
Oil Cleanliness	ISO 4406 (c)	>16/13/10	17/13/9	19/16/11	16/14/11

FLUID DEGRADATION

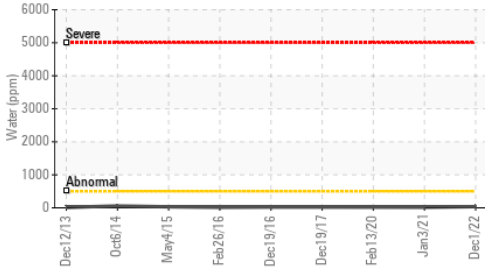
	method	limit/base	current	history1	history2
Acid Number (AN)	mg KOH/g	ASTM D8045	0.21	0.165	0.163

OIL ANALYSIS REPORT

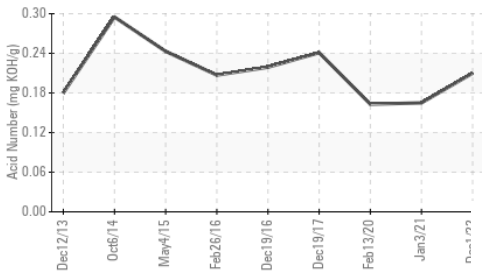
Particle Trend



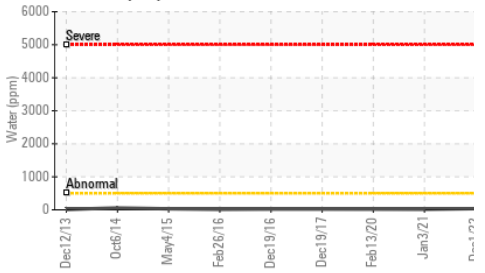
Water (KF)



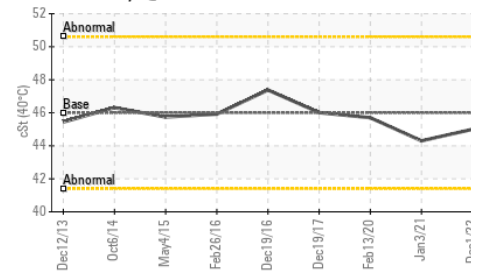
Acid Number



Water (KF)



Viscosity @ 40°C

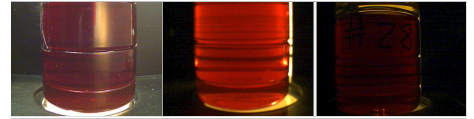


VISUAL	method	limit/base	current	history1	history2
White Metal	scalar	*Visual	NONE	NONE	NONE
Yellow Metal	scalar	*Visual	NONE	NONE	NONE
Precipitate	scalar	*Visual	NONE	NONE	NONE
Silt	scalar	*Visual	NONE	NONE	NONE
Debris	scalar	*Visual	NONE	NONE	NONE
Sand/Dirt	scalar	*Visual	NONE	NONE	NONE
Appearance	scalar	*Visual	NORML	NORML	NORML
Odor	scalar	*Visual	NORML	NORML	NORML
Emulsified Water	scalar	*Visual	>0.05	NEG	NEG
Free Water	scalar	*Visual		NEG	NEG

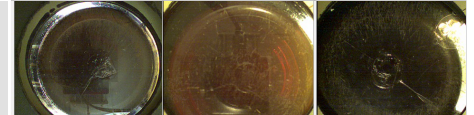
FLUID PROPERTIES	method	limit/base	current	history1	history2
Visc @ 40°C	cSt	ASTM D445	46.0	45.0	44.3

SAMPLE IMAGES	method	limit/base	current	history1	history2
---------------	--------	------------	---------	----------	----------

Color

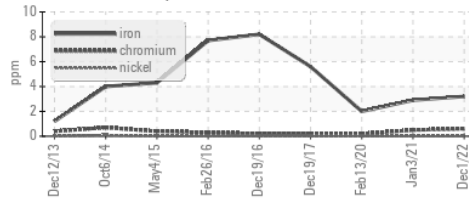


Bottom

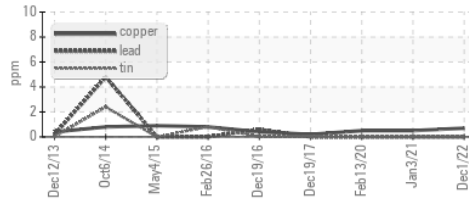


GRAPHS

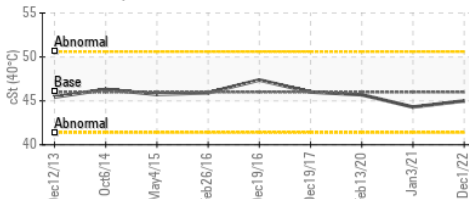
Ferrous Alloys



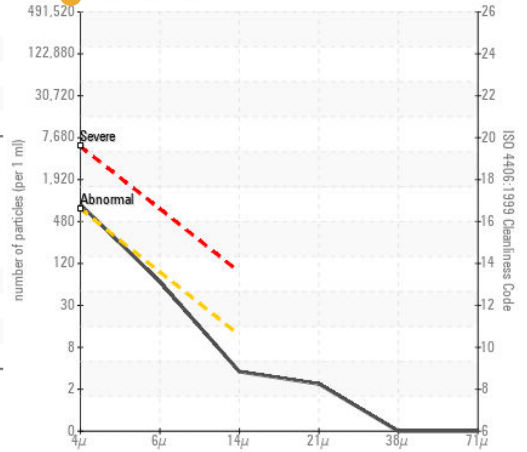
Non-ferrous Metals



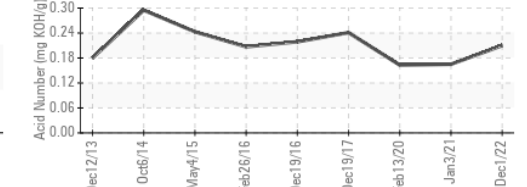
Viscosity @ 40°C



Particle Count



Acid Number



Certificate L2367

Laboratory : WearCheck USA - 501 Madison Ave., Cary, NC 27513

Sample No. : ST44382

Lab Number : 05707085

Unique Number : 10241660

Test Package : IND 2 (Additional Tests: KF)

To discuss this sample report, contact Customer Service at 1-800-237-1369.

* - Denotes test methods that are outside of the ISO 17025 scope of accreditation.

Statements of conformity to specifications are based on the simple acceptance decision rule (JCGM 106:2012)

Received : 02 Dec 2022

Tested : 05 Dec 2022

Diagnosed : 05 Dec 2022 - Angela Borella

MENSHEM PACKAGING USA INC.

21 INDUSTRIAL PARK

WALDWICK, NJ

US 07463

Contact: Jonathan Vanbeekum
jonathan.vanbeekum@menshen.com

T:

F: