

Area  
**Molding**  
 Machine Id  
**PRESS 22 (S/N 61009601)**  
 Component  
**Hydraulic System**  
 Fluid  
**SHELL TELLUS S3 M 46 (280 GAL)**

## DIAGNOSIS

**Recommendation**  
 Resample at the next service interval to monitor. Due to an abnormal test result it is recommended to contact Stauff Corp at (201)-444-7800 for help resolving the issue.

**Wear**  
 All component wear rates are normal.

**Contamination**  
 There is a moderate amount of silt (particulates < 14 microns in size) present in the oil.

**Fluid Condition**  
 The AN level is acceptable for this fluid. The condition of the oil is suitable for further service.

SAMPLE INFORMATION		method	limit/base	current	history1	history2
Sample Number	Client Info			<b>ST44365</b>	ST40919	ST39381
Sample Date	Client Info			<b>01 Dec 2022</b>	09 Dec 2020	13 Feb 2020
Machine Age	hrs	Client Info		<b>0</b>	0	0
Oil Age	hrs	Client Info		<b>0</b>	0	0
Oil Changed	Client Info			<b>N/A</b>	N/A	N/A
Sample Status				<b>ATTENTION</b>	NORMAL	ATTENTION

WEAR METALS		method	limit/base	current	history1	history2
Iron	ppm	ASTM D5185m	>40	<b>1</b>	3	<1
Chromium	ppm	ASTM D5185m	>4	<b>&lt;1</b>	<1	0
Nickel	ppm	ASTM D5185m	>20	<b>0</b>	0	0
Titanium	ppm	ASTM D5185m		<b>0</b>	0	0
Silver	ppm	ASTM D5185m		<b>0</b>	0	<1
Aluminum	ppm	ASTM D5185m	>4	<b>0</b>	0	0
Lead	ppm	ASTM D5185m	>10	<b>0</b>	0	<1
Copper	ppm	ASTM D5185m	>60	<b>&lt;1</b>	<1	<1
Tin	ppm	ASTM D5185m	>4	<b>0</b>	0	0
Antimony	ppm	ASTM D5185m		<b>---</b>	0	0
Vanadium	ppm	ASTM D5185m		<b>0</b>	0	0
Cadmium	ppm	ASTM D5185m		<b>0</b>	0	0

ADDITIVES		method	limit/base	current	history1	history2
Boron	ppm	ASTM D5185m	0	<b>0</b>	0	0
Barium	ppm	ASTM D5185m	3	<b>0</b>	0	0
Molybdenum	ppm	ASTM D5185m	0	<b>0</b>	0	<1
Manganese	ppm	ASTM D5185m		<b>0</b>	0	0
Magnesium	ppm	ASTM D5185m	0	<b>0</b>	<1	0
Calcium	ppm	ASTM D5185m	0	<b>38</b>	39	42
Phosphorus	ppm	ASTM D5185m	106	<b>61</b>	64	71
Zinc	ppm	ASTM D5185m	0	<b>4</b>	0	0
Sulfur	ppm	ASTM D5185m		<b>348</b>	321	353

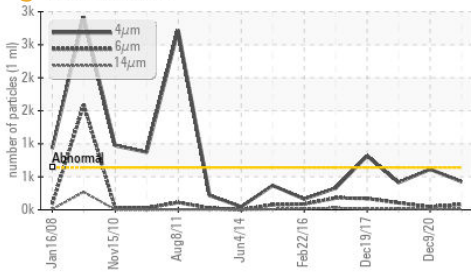
CONTAMINANTS		method	limit/base	current	history1	history2
Silicon	ppm	ASTM D5185m	>20	<b>0</b>	<1	<1
Sodium	ppm	ASTM D5185m		<b>&lt;1</b>	0	0
Potassium	ppm	ASTM D5185m	>20	<b>0</b>	0	<1
Water	%	ASTM D6304	>0.05	<b>0.003</b>	0.002	0.001
ppm Water	ppm	ASTM D6304	>500	<b>33.0</b>	24.6	11.4

FLUID CLEANLINESS		method	limit/base	current	history1	history2
Particles >4µm		ASTM D7647	>640	<b>425</b>	614	413
Particles >6µm		ASTM D7647	>80	<b>82</b>	46	105
Particles >14µm		ASTM D7647	>10	<b>10</b>	8	16
Particles >21µm		ASTM D7647	>3	<b>3</b>	3	3
Particles >38µm		ASTM D7647	>3	<b>0</b>	0	0
Particles >71µm		ASTM D7647	>3	<b>0</b>	0	0
Oil Cleanliness		ISO 4406 (c)	>16/13/10	<b>16/14/10</b>	16/13/10	16/14/11

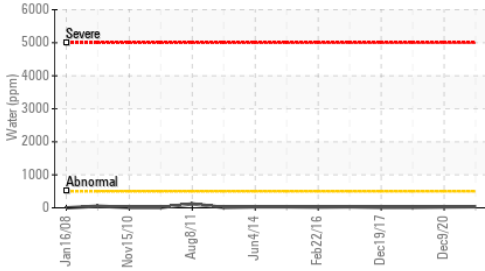
FLUID DEGRADATION		method	limit/base	current	history1	history2
Acid Number (AN)	mg KOH/g	ASTM D8045		<b>0.17</b>	0.174	0.152

# OIL ANALYSIS REPORT

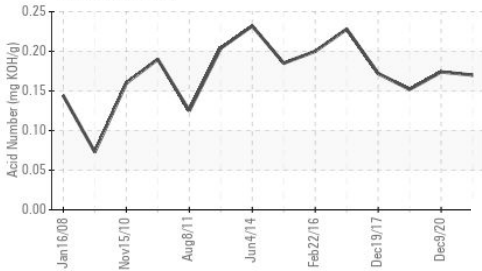
### Particle Trend



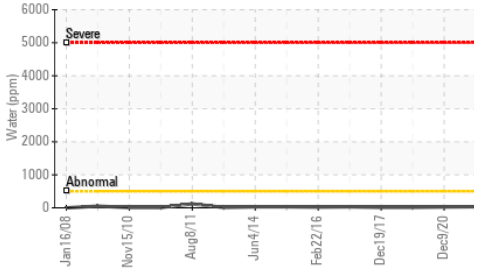
### Water (KF)



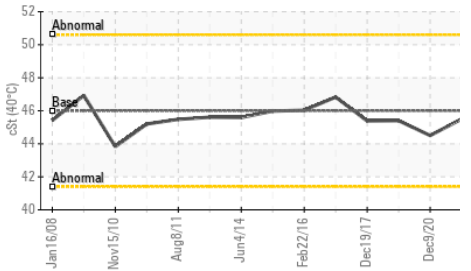
### Acid Number



### Water (KF)



### Viscosity @ 40°C

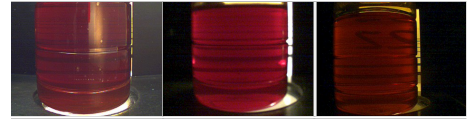


VISUAL	method	limit/base	current	history1	history2
White Metal	scalar	*Visual	NONE	NONE	NONE
Yellow Metal	scalar	*Visual	NONE	NONE	NONE
Precipitate	scalar	*Visual	NONE	NONE	NONE
Silt	scalar	*Visual	NONE	NONE	NONE
Debris	scalar	*Visual	NONE	NONE	NONE
Sand/Dirt	scalar	*Visual	NONE	NONE	NONE
Appearance	scalar	*Visual	NORML	NORML	NORML
Odor	scalar	*Visual	NORML	NORML	NORML
Emulsified Water	scalar	*Visual	>0.05	NEG	NEG
Free Water	scalar	*Visual		NEG	NEG

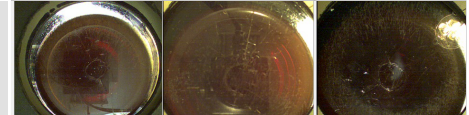
FLUID PROPERTIES	method	limit/base	current	history1	history2
Visc @ 40°C	cSt	ASTM D445	46.0	45.5	44.5

SAMPLE IMAGES	method	limit/base	current	history1	history2
---------------	--------	------------	---------	----------	----------

Color

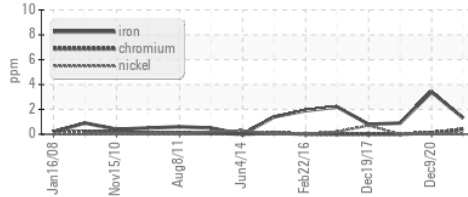


Bottom

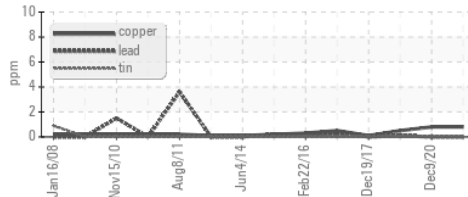


### GRAPHS

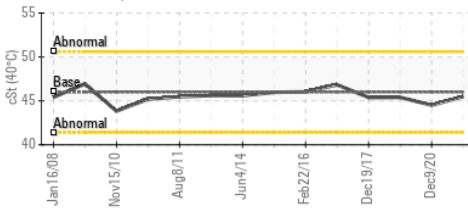
#### Ferrous Alloys



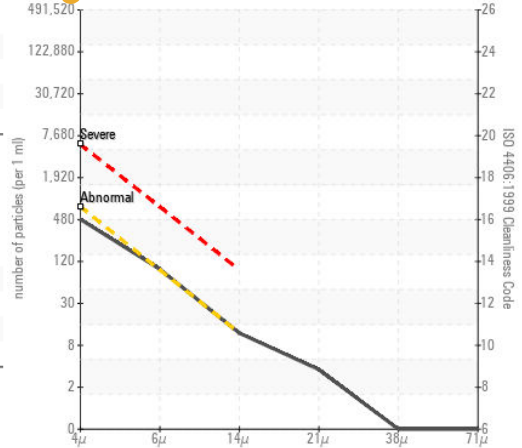
#### Non-ferrous Metals



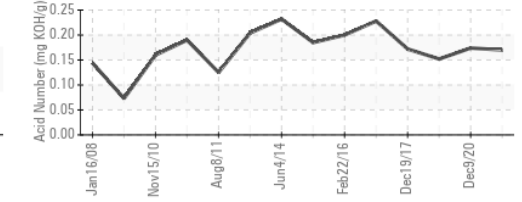
#### Viscosity @ 40°C



#### Particle Count



#### Acid Number



Certificate L2367

Laboratory : WearCheck USA - 501 Madison Ave., Cary, NC 27513

Sample No. : ST44365

Lab Number : 05707092

Unique Number : 10241667

Test Package : IND 2 ( Additional Tests: KF )

To discuss this sample report, contact Customer Service at 1-800-237-1369.

\* - Denotes test methods that are outside of the ISO 17025 scope of accreditation.

Statements of conformity to specifications are based on the simple acceptance decision rule (JCGM 106:2012)

Received : 02 Dec 2022

Tested : 05 Dec 2022

Diagnosed : 05 Dec 2022 - Doug Bogart

MENSHEM PACKAGING USA INC.

21 INDUSTRIAL PARK

WALDWICK, NJ

US 07463

Contact: Jonathan Vanbeekum

jonathan.vanbeekum@menshen.com

T:

F: