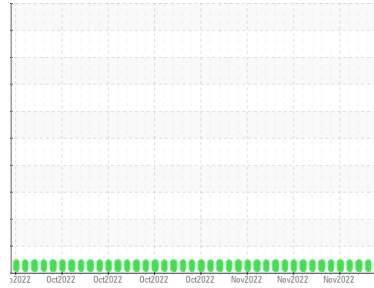




COOLANT REPORT

Sample Rating Trend

NORMAL



Area
WCLSNC
 Machine Id
QC COOL ELC NC 09012022
 Component
Coolant
 Fluid
CAT EXTENDED LIFE COOLANT (ELC) (--- GAL)

DIAGNOSIS

SAMPLE INFORMATION		method	limit/base	current	history1	history2
Sample Number	Client Info			WC0767976	WC0759402	WC0759398
Sample Date	Client Info			06 Dec 2022	29 Nov 2022	25 Nov 2022
Machine Age	hrs	Client Info		0	0	0
Oil Age	hrs	Client Info		0	0	0
Oil Changed	Client Info			N/A	N/A	N/A
Sample Status				NORMAL	NORMAL	NORMAL

PHYSICAL TEST RESULTS		method	limit/base	current	history1	history2
Specific Gravity		*ASTM D1298		1.067	1.067	1.067
pH	Scale 0-14	ASTM D1287		8.17	8.15	8.12
Nitrites	ppm	AP-053:2009		676	636	676
Reserve Alkalinity	Scale 0-20	*ASTM D1121		---	---	---
Percentage Glycol	%	ASTM D3321		49.5	49.9	49.9
Freezing Point	°F	ASTM D3321		-33	-33	-33
Total Dissolved Solids				473.5	392.0	311.0
Carboxylate				pass	pass	pass

CORROSION INHIBITORS		method	limit/base	current	history1	history2
Silicon	ppm	ASTM D6130	0	12	17	16
Phosphorus	ppm	ASTM D6130	0	0	0	0
Boron	ppm	ASTM D6130	0	0	5	0
Molybdenum	ppm	ASTM D6130	950	1077	1078	1127

CORROSION		method	limit/base	current	history1	history2
Iron	ppm	ASTM D6130	>15	<1	2	<1
Aluminum	ppm	ASTM D6130	>10	0	<1	0
Copper	ppm	ASTM D6130	>10	0	<1	<1
Lead	ppm	ASTM D6130	>10	0	<1	<1
Tin	ppm	ASTM D6130	>10	0	<1	0
Zinc	ppm	ASTM D6130		0	<1	0

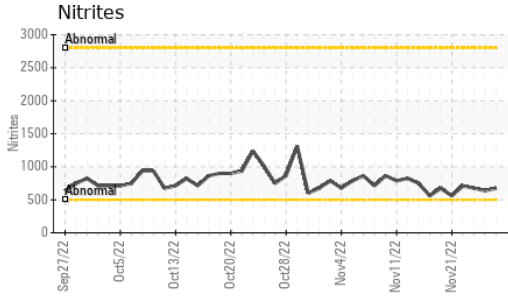
CONTAMINANTS		method	limit/base	current	history1	history2
Chlorine	ppm	ASTM D6130		5	13	6

CARRIER SALTS		method	limit/base	current	history1	history2
Sodium	ppm	ASTM D6130		5093	4529	4786
Potassium	ppm	ASTM D6130		12	26	49

SCALE POTENTIAL		method	limit/base	current	history1	history2
Calcium	ppm	ASTM D6130		<1	7	<1
Magnesium	ppm	ASTM D6130		0	<1	0

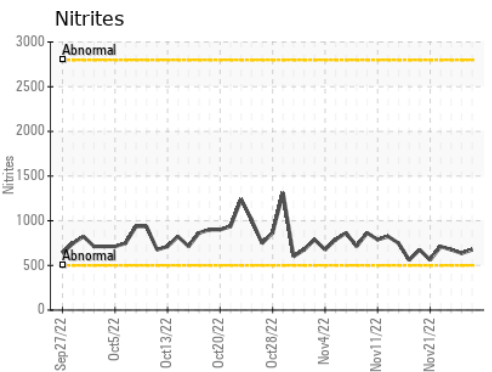
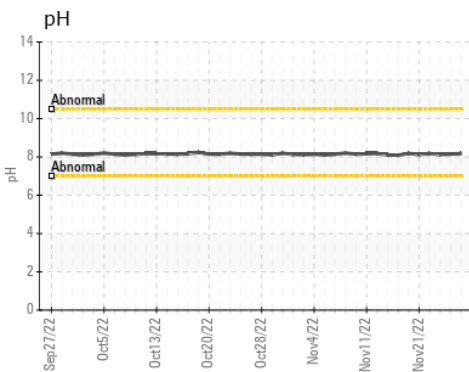
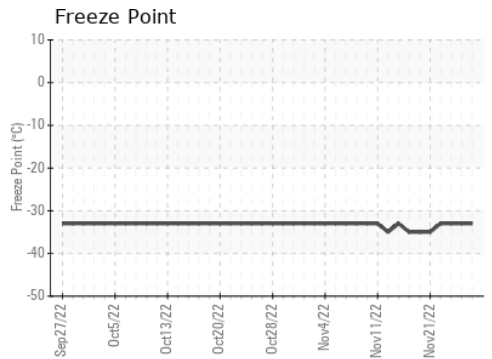
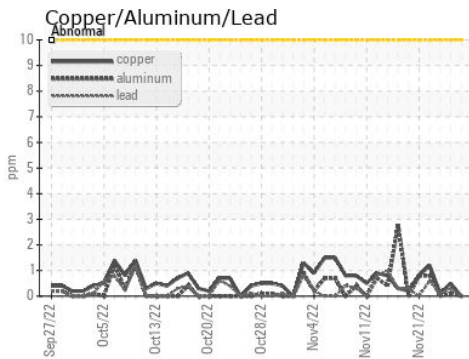
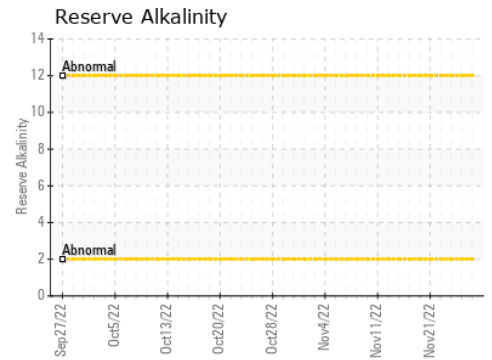
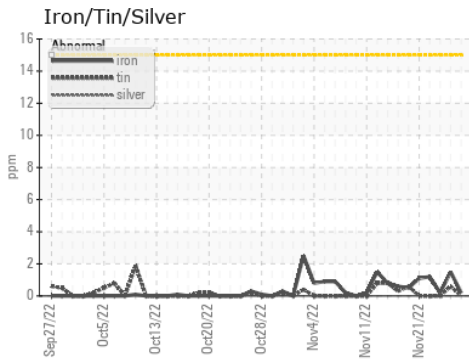


COOLANT REPORT



VISUAL	method	limit/base	current	history1	history2
Coolant Color	*Visual		Red	Red	Red
Coolant Appearance	*Visual	Clear	normal	normal	normal
Color					
Bottom					

GRAPHS



Laboratory : WearCheck USA - 501 Madison Ave., Cary, NC 27513
Sample No. : WC0767976 **Received** : 06 Dec 2022
Lab Number : 05710190 **Diagnosed** : 02 Oct 2023
Unique Number : 10244765 **Diagnostician** : System
Test Package : COOL- (Additional Tests: COOL, ICP)

WEARCHECK LUBRICATION SERVICES QA ACCOUNT
 501 Madison Ave
 Cary, NC
 US 27513
 Contact: WCLS CARY NC

To discuss this sample report, contact Customer Service at 1-800-237-1369.
 * - Denotes test methods that are outside of the ISO 17025 scope of accreditation.
 Statements of conformity to specifications are based on the simple acceptance decision rule (JCGM 106:2012)

T: (919)379-4102
 F: (919)379-4050