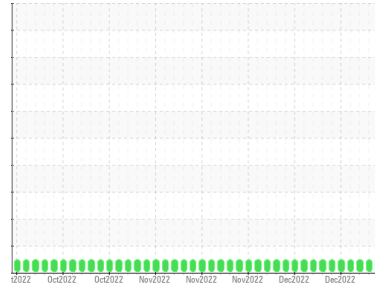




COOLANT REPORT

Sample Rating Trend

NORMAL



Area
WCLSNC
 Machine Id
QC COOL ELC NC 09012022
 Component
Coolant
 Fluid
CAT EXTENDED LIFE COOLANT (ELC) (--- GAL)

DIAGNOSIS

| SAMPLE INFORMATION | | method | limit/base | current | history1 | history2 |
|--------------------|-------------|-------------|------------|--------------------|-------------|-------------|
| Sample Number | Client Info | | | WC0767997 | WC0767993 | WC0767992 |
| Sample Date | Client Info | | | 27 Dec 2022 | 23 Dec 2022 | 22 Dec 2022 |
| Machine Age | hrs | Client Info | | 0 | 0 | 0 |
| Oil Age | hrs | Client Info | | 0 | 0 | 0 |
| Oil Changed | Client Info | | | N/A | N/A | N/A |
| Sample Status | | | | NORMAL | NORMAL | NORMAL |

| PHYSICAL TEST RESULTS | | method | limit/base | current | history1 | history2 |
|------------------------|------------|-------------|------------|--------------|----------|----------|
| Specific Gravity | | *ASTM D1298 | | 1.067 | 1.067 | 1.067 |
| pH | Scale 0-14 | ASTM D1287 | | 8.13 | 8.03 | 8.15 |
| Nitrites | ppm | AP-053:2009 | | 676 | 524 | 748 |
| Reserve Alkalinity | Scale 0-20 | *ASTM D1121 | | --- | --- | --- |
| Percentage Glycol | % | ASTM D3321 | | 50.0 | 50.0 | 49.9 |
| Freezing Point | °F | ASTM D3321 | | -35 | -35 | -33 |
| Total Dissolved Solids | | | | 341.5 | 350.5 | 334.0 |
| Carboxylate | | | | pass | pass | pass |

| CORROSION INHIBITORS | | method | limit/base | current | history1 | history2 |
|----------------------|-----|------------|------------|-------------|----------|----------|
| Silicon | ppm | ASTM D6130 | 0 | 19 | 12 | 23 |
| Phosphorus | ppm | ASTM D6130 | 0 | 0 | 0 | 0 |
| Boron | ppm | ASTM D6130 | 0 | 11 | <1 | 19 |
| Molybdenum | ppm | ASTM D6130 | 950 | 1122 | 1087 | 1049 |

| CORROSION | | method | limit/base | current | history1 | history2 |
|-----------|-----|------------|------------|--------------|----------|----------|
| Iron | ppm | ASTM D6130 | >15 | <1 | <1 | 2 |
| Aluminum | ppm | ASTM D6130 | >10 | <1 | 0 | <1 |
| Copper | ppm | ASTM D6130 | >10 | 1 | <1 | 1 |
| Lead | ppm | ASTM D6130 | >10 | <1 | 0 | 1 |
| Tin | ppm | ASTM D6130 | >10 | 0 | 0 | 1 |
| Zinc | ppm | ASTM D6130 | | 0 | 0 | <1 |

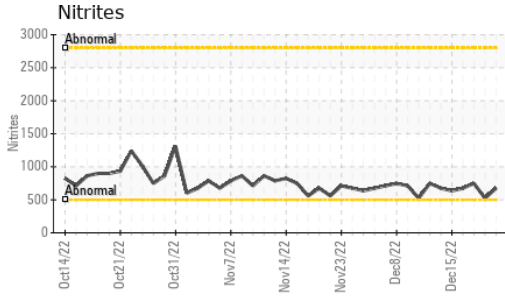
| CONTAMINANTS | | method | limit/base | current | history1 | history2 |
|--------------|-----|------------|------------|-----------|----------|----------|
| Chlorine | ppm | ASTM D6130 | | 18 | 13 | 24 |

| CARRIER SALTS | | method | limit/base | current | history1 | history2 |
|---------------|-----|------------|------------|-------------|----------|----------|
| Sodium | ppm | ASTM D6130 | | 5663 | 5319 | 5712 |
| Potassium | ppm | ASTM D6130 | | 9 | 24 | 69 |

| SCALE POTENTIAL | | method | limit/base | current | history1 | history2 |
|-----------------|-----|------------|------------|--------------|----------|----------|
| Calcium | ppm | ASTM D6130 | | <1 | 4 | 2 |
| Magnesium | ppm | ASTM D6130 | | <1 | <1 | <1 |

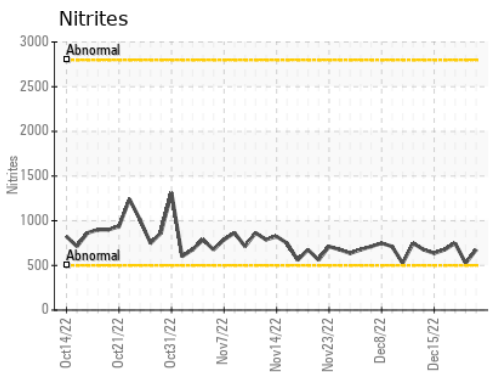
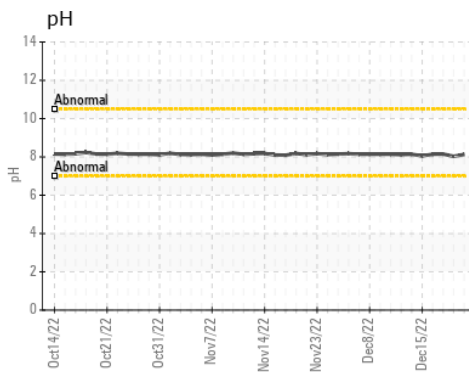
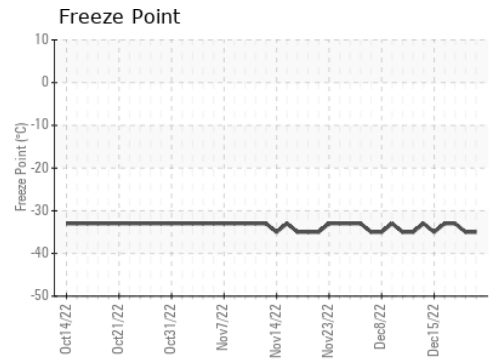
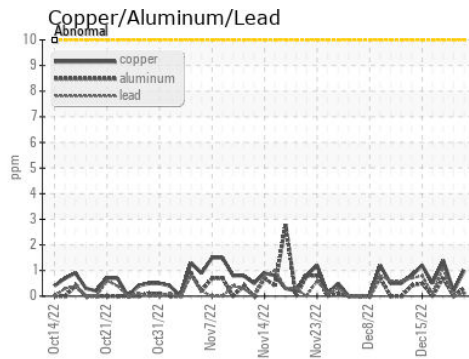
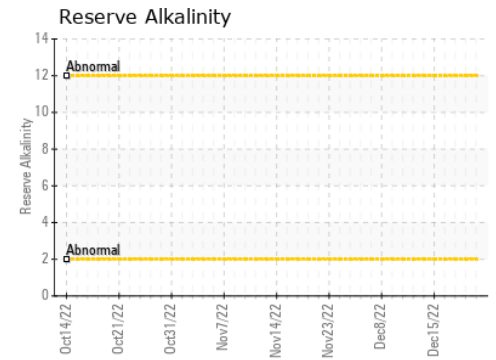
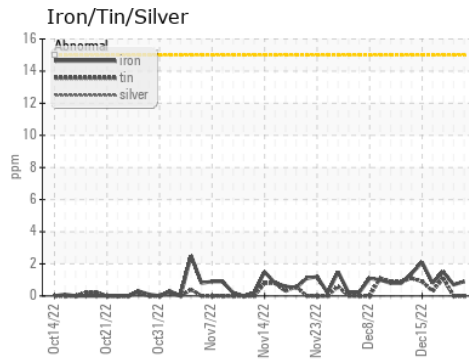


COOLANT REPORT



| VISUAL | method | limit/base | current | history1 | history2 |
|--------------------|---------|------------|---------|----------|----------|
| Coolant Color | *Visual | | Red | Red | Red |
| Coolant Appearance | *Visual | Clear | normal | normal | normal |
| Color | | | | | |
| Bottom | | | | | |

GRAPHS



Certificate L2367

Laboratory : WearCheck USA - 501 Madison Ave., Cary, NC 27513
Sample No. : WC0767997 **Received** : 29 Dec 2022
Lab Number : 05727572 **Diagnosed** : 02 Oct 2023
Unique Number : 10272153 **Diagnostician** : System
Test Package : COOL- (Additional Tests: COOL, ICP)

WEARCHECK LUBRICATION SERVICES QA ACCOUNT
 501 Madison Ave
 Cary, NC
 US 27513
 Contact: WCLS CARY NC

To discuss this sample report, contact Customer Service at 1-800-237-1369.

* - Denotes test methods that are outside of the ISO 17025 scope of accreditation.

Statements of conformity to specifications are based on the simple acceptance decision rule (JCGM 106:2012)

T: (919)379-4102

F: (919)379-4050