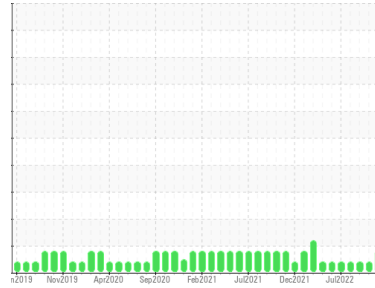




Machine Id
Press #3 6561231

Component
Hydraulic System

Fluid
KLUBER KLUBEROIL 4 UH1-46 N (251 GAL)



DIAGNOSIS

Recommendation

The filter change at the time of sampling has been noted. We recommend an early resample to monitor this condition.

Wear

All component wear rates are normal.

Contamination

MPC (Membrane Patch Colorimetry) test indicates a high concentration of varnish present. The system cleanliness is acceptable for your target ISO 4406 cleanliness code.

Fluid Condition

The AN level is acceptable for this fluid.

SAMPLE INFORMATION

	method	limit/base	current	history1	history2
Sample Number	Client Info		PTK0003851	PTK0003857	PTK0003843
Sample Date	Client Info		17 Jan 2023	21 Dec 2022	03 Nov 2022
Machine Age	hrs	Client Info	54750	54201	53348
Oil Age	hrs	Client Info	9478	8929	8076
Oil Changed	Client Info		Not Chngd	Not Chngd	Not Chngd
Sample Status			SEVERE	ABNORMAL	ABNORMAL

CONTAMINATION

	method	limit/base	current	history1	history2
Water	WC Method	>0.1	NEG	NEG	NEG

WEAR METALS

	method	limit/base	current	history1	history2
Iron	ppm	ASTM D5185m >20	13	11	12
Chromium	ppm	ASTM D5185m >10	<1	<1	<1
Nickel	ppm	ASTM D5185m >10	0	0	0
Titanium	ppm	ASTM D5185m	0	0	0
Silver	ppm	ASTM D5185m	<1	0	0
Aluminum	ppm	ASTM D5185m >10	3	2	3
Lead	ppm	ASTM D5185m >10	0	0	0
Copper	ppm	ASTM D5185m >75	<1	<1	<1
Tin	ppm	ASTM D5185m >10	<1	0	0
Vanadium	ppm	ASTM D5185m	0	0	0
Cadmium	ppm	ASTM D5185m	0	0	0

ADDITIVES

	method	limit/base	current	history1	history2
Boron	ppm	ASTM D5185m	0	0	0
Barium	ppm	ASTM D5185m	1	0	0
Molybdenum	ppm	ASTM D5185m	0	0	0
Manganese	ppm	ASTM D5185m	<1	<1	<1
Magnesium	ppm	ASTM D5185m	<1	<1	0
Calcium	ppm	ASTM D5185m	2	2	0
Phosphorus	ppm	ASTM D5185m	116	115	107
Zinc	ppm	ASTM D5185m	29	24	17
Sulfur	ppm	ASTM D5185m	35	40	40

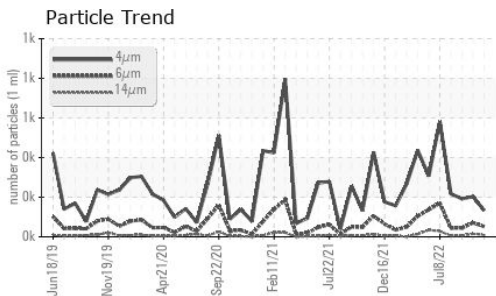
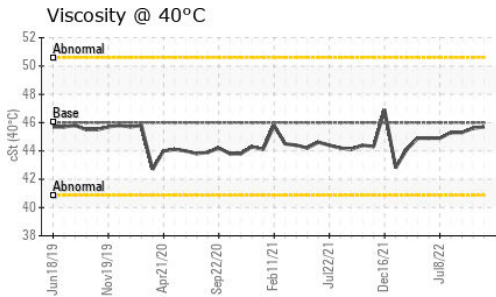
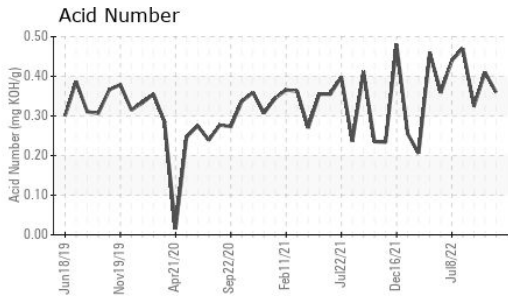
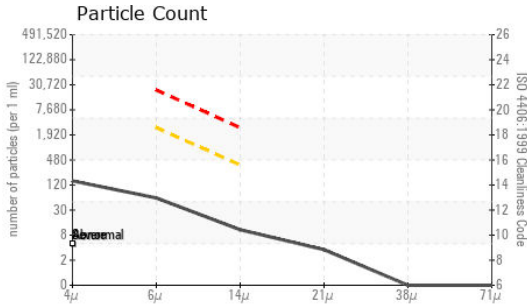
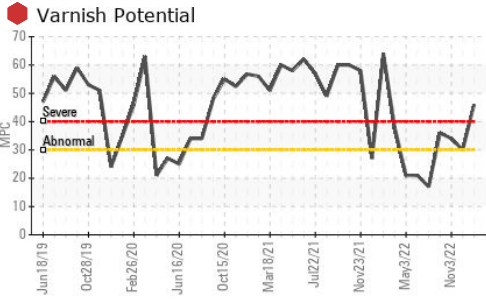
CONTAMINANTS

	method	limit/base	current	history1	history2
Silicon	ppm	ASTM D5185m >20	2	1	1
Sodium	ppm	ASTM D5185m	0	<1	0
Potassium	ppm	ASTM D5185m >20	1	0	0

FLUID CLEANLINESS

	method	limit/base	current	history1	history2
Particles >4µm	ASTM D7647		133	203	192
Particles >6µm	ASTM D7647	>2500	52	71	45
Particles >14µm	ASTM D7647	>320	9	15	6
Particles >21µm	ASTM D7647	>80	3	6	2
Particles >38µm	ASTM D7647	>20	0	0	0
Particles >71µm	ASTM D7647	>4	0	0	0
Oil Cleanliness	ISO 4406 (c)	>18/15	13/10	13/11	13/10

OIL ANALYSIS REPORT



FLUID DEGRADATION		method	limit/base	current	history1	history2
Acid Number (AN)	mg KOH/g	ASTM D8045		0.36	0.41	0.324
MPC Varnish Potential	Scale	ASTM D7843	>15	46	30	34

VISUAL		method	limit/base	current	history1	history2
White Metal	scalar	*Visual	NONE	NONE	NONE	NONE
Yellow Metal	scalar	*Visual	NONE	NONE	NONE	NONE
Precipitate	scalar	*Visual	NONE	NONE	NONE	NONE
Silt	scalar	*Visual	NONE	NONE	NONE	NONE
Debris	scalar	*Visual	NONE	NONE	NONE	NONE
Sand/Dirt	scalar	*Visual	NONE	NONE	NONE	NONE
Appearance	scalar	*Visual	NORML	NORML	NORML	NORML
Odor	scalar	*Visual	NORML	NORML	NORML	NORML
Emulsified Water	scalar	*Visual	>0.1	NEG	NEG	NEG
Free Water	scalar	*Visual		NEG	NEG	NEG

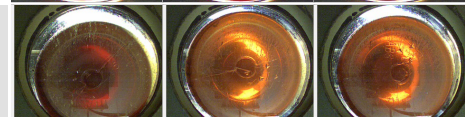
FLUID PROPERTIES		method	limit/base	current	history1	history2
Visc @ 40°C	cSt	ASTM D445	46	45.7	45.6	45.3

SAMPLE IMAGES		method	limit/base	current	history1	history2
---------------	--	--------	------------	---------	----------	----------

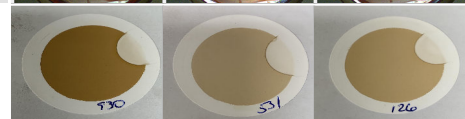
Color



Bottom



MPC



Certificate L2367

Laboratory : WearCheck USA - 501 Madison Ave., Cary, NC 27513
Sample No. : PTK0003851 **Received** : 24 Jan 2023
Lab Number : **05747930** **Diagnosed** : 30 Jan 2023
Unique Number : 10307534 **Diagnostician** : Doug Bogart
Test Package : MOB 2 (Additional Tests: MPC)

NIAGARA BOTTLING
 11031 88TH AVE
 PLEASANT PRAIRIE, WI
 US 53158
 Contact: AJ

To discuss this sample report, contact Customer Service at 1-800-237-1369.

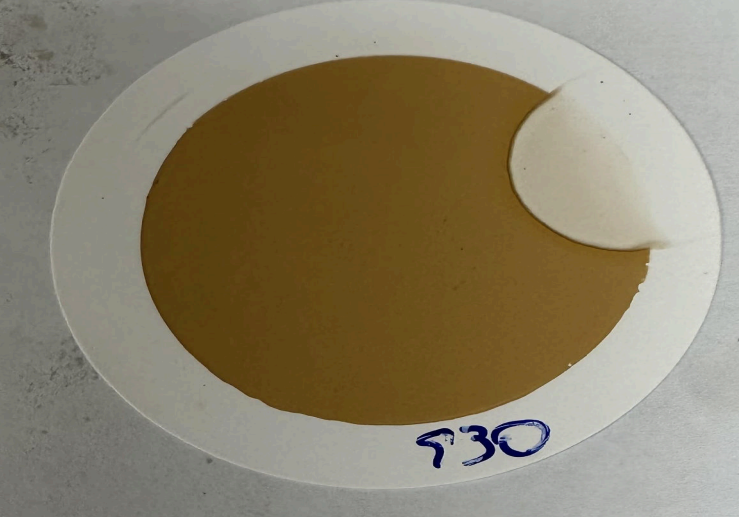
* - Denotes test methods that are outside of the ISO 17025 scope of accreditation.

Statements of conformity to specifications are based on the simple acceptance decision rule (JCGM 106:2012)

T: (909)239-7599

F:

MPC (Varnish Test)



Sample Color & Clarity



This page left intentionally blank