



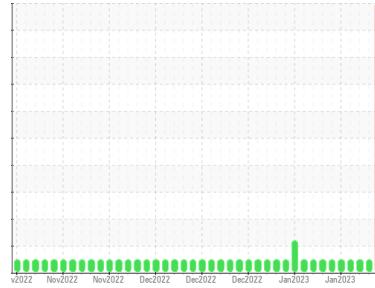
COOLANT REPORT

Sample Rating Trend

COOL CHEMICALS



Area
WCLSNC
 Machine Id
QC COOL ELC NC 09012022
 Component
Coolant
 Fluid
CAT EXTENDED LIFE COOLANT (ELC) (--- GAL)



DIAGNOSIS

SAMPLE INFORMATION		method	limit/base	current	history1	history2
Sample Number	Client Info			WC0786951	WC0786946	WC0775786
Sample Date	Client Info			06 Feb 2023	01 Feb 2023	31 Jan 2023
Machine Age	hrs	Client Info		0	0	0
Oil Age	hrs	Client Info		0	0	0
Oil Changed	Client Info			N/A	N/A	N/A
Sample Status				SEVERE	NORMAL	NORMAL

PHYSICAL TEST RESULTS		method	limit/base	current	history1	history2
Specific Gravity		*ASTM D1298		1.067	1.067	1.067
pH	Scale 0-14	ASTM D1287		8.15	8.17	8.27
Nitrites	ppm	AP-053:2009		712	524	712
Reserve Alkalinity	Scale 0-20	*ASTM D1121		---	---	---
Percentage Glycol	%	ASTM D3321		50.0	50.0	49.9
Freezing Point	°F	ASTM D3321		-35	-35	-33
Total Dissolved Solids				324.0	348.0	342.0
Carboxylate				pass	pass	pass

CORROSION INHIBITORS		method	limit/base	current	history1	history2
Silicon	ppm	ASTM D6130	0	45	15	15
Phosphorus	ppm	ASTM D6130	0	30	0	0
Boron	ppm	ASTM D6130	0	20	0	0
Molybdenum	ppm	ASTM D6130	950	1128	1035	1022

CORROSION		method	limit/base	current	history1	history2
Iron	ppm	ASTM D6130	>2	1	<1	<1
Aluminum	ppm	ASTM D6130	>2	<1	0	0
Copper	ppm	ASTM D6130	>2	1	0	0
Lead	ppm	ASTM D6130	>2	1	0	0
Tin	ppm	ASTM D6130	>2	1	0	0
Zinc	ppm	ASTM D6130	>2	1	0	0

CONTAMINANTS		method	limit/base	current	history1	history2
Chlorine	ppm	ASTM D6130		21	5	6

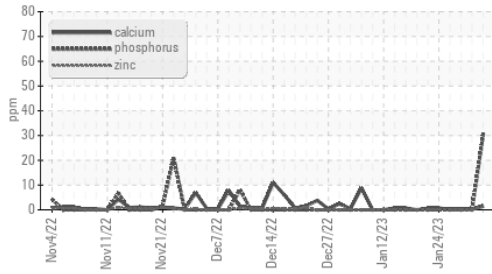
CARRIER SALTS		method	limit/base	current	history1	history2
Sodium	ppm	ASTM D6130		6550	4459	4460
Potassium	ppm	ASTM D6130		658	21	46

SCALE POTENTIAL		method	limit/base	current	history1	history2
Calcium	ppm	ASTM D6130	>5	2	<1	<1
Magnesium	ppm	ASTM D6130	>6	<1	0	0

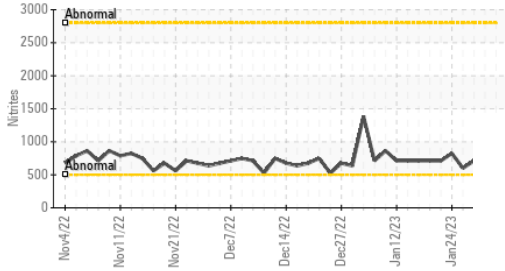


COOLANT REPORT

Additives



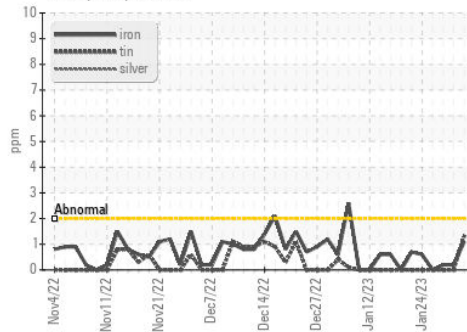
Nitrites



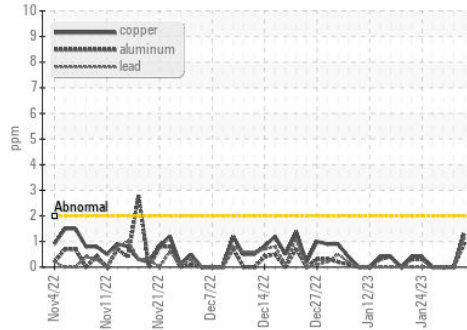
VISUAL	method	limit/base	current	history1	history2
Coolant Color	*Visual		Red	Red	Red
Coolant Appearance	*Visual	Clear	normal	normal	normal
Color					
Bottom					

GRAPHS

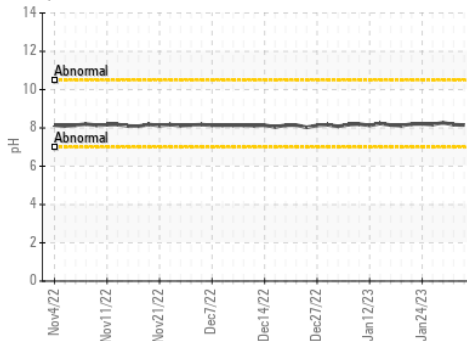
Iron/Tin/Silver



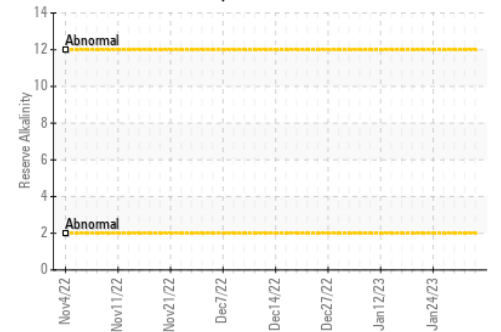
Copper/Aluminum/Lead



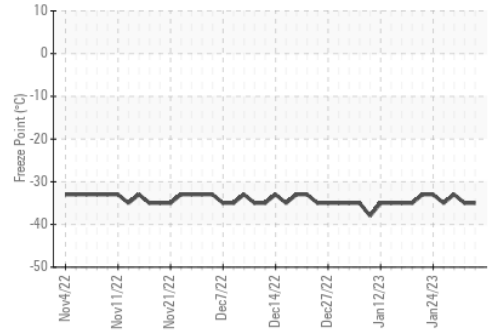
pH



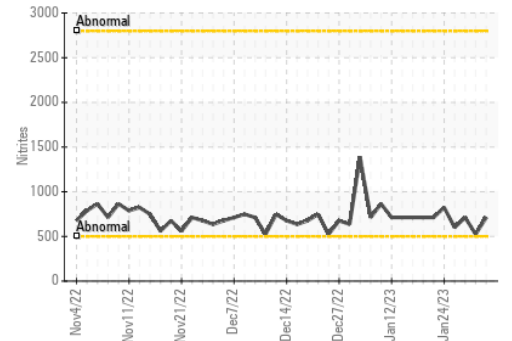
Reserve Alkalinity



Freeze Point



Nitrites



Certificate L2367

Laboratory : WearCheck USA - 501 Madison Ave., Cary, NC 27513
 Sample No. : WC0786951 Received : 06 Feb 2023
 Lab Number : 05759859 Diagnosed : 02 Oct 2023
 Unique Number : 10324466 Diagnostician : System
 Test Package : COOL- (Additional Tests: COOL, ICP)

WEARCHECK LUBRICATION SERVICES QA ACCOUNT
 501 Madison Ave
 Cary, NC
 US 27513
 Contact: WCLS CARY NC

To discuss this sample report, contact Customer Service at 1-800-237-1369.

* - Denotes test methods that are outside of the ISO 17025 scope of accreditation.

Statements of conformity to specifications are based on the simple acceptance decision rule (JCGM 106:2012)

T: (919)379-4102

F: (919)379-4050