



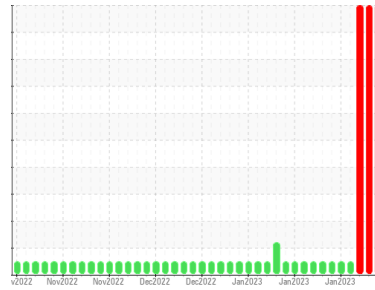
COOLANT REPORT

Sample Rating Trend

COOL CHEMICALS



Area
WCLSNC
 Machine Id
QC COOL ELC NC 09012022
 Component
Coolant
 Fluid
CAT EXTENDED LIFE COOLANT (ELC) (--- GAL)



DIAGNOSIS

| SAMPLE INFORMATION | | method | limit/base | current | history1 | history2 |
|--------------------|-------------|-------------|------------|--------------------|-------------|-------------|
| Sample Number | Client Info | | | WC0786953 | WC0786952 | WC0786951 |
| Sample Date | Client Info | | | 08 Feb 2023 | 07 Feb 2023 | 06 Feb 2023 |
| Machine Age | hrs | Client Info | | 0 | 0 | 0 |
| Oil Age | hrs | Client Info | | 0 | 0 | 0 |
| Oil Changed | Client Info | | | N/A | N/A | N/A |
| Sample Status | | | | SEVERE | SEVERE | SEVERE |

| PHYSICAL TEST RESULTS | | method | limit/base | current | history1 | history2 |
|------------------------|------------|-------------|------------|--------------|----------|----------|
| Specific Gravity | | *ASTM D1298 | | 1.068 | 1.067 | 1.067 |
| pH | Scale 0-14 | ASTM D1287 | | 8.11 | 8.13 | 8.15 |
| Nitrites | ppm | AP-053:2009 | | 712 | 748 | 712 |
| Reserve Alkalinity | Scale 0-20 | *ASTM D1121 | | --- | --- | --- |
| Percentage Glycol | % | ASTM D3321 | | 50.1 | 49.9 | 50.0 |
| Freezing Point | °F | ASTM D3321 | | -35 | -33 | -35 |
| Total Dissolved Solids | | | | 347.0 | 460.0 | 324.0 |
| Carboxylate | | | | pass | pass | pass |

| CORROSION INHIBITORS | | method | limit/base | current | history1 | history2 |
|----------------------|-----|------------|------------|-------------|----------|----------|
| Silicon | ppm | ASTM D6130 | 0 | 45 | 45 | 45 |
| Phosphorus | ppm | ASTM D6130 | 0 | 20 | 31 | 30 |
| Boron | ppm | ASTM D6130 | 0 | 17 | 21 | 20 |
| Molybdenum | ppm | ASTM D6130 | 950 | 1200 | 1132 | 1128 |

| CORROSION | | method | limit/base | current | history1 | history2 |
|-----------|-----|------------|------------|--------------|----------|----------|
| Iron | ppm | ASTM D6130 | >2 | 1 | 1 | 1 |
| Aluminum | ppm | ASTM D6130 | >2 | <1 | <1 | <1 |
| Copper | ppm | ASTM D6130 | >2 | 1 | 1 | 1 |
| Lead | ppm | ASTM D6130 | >2 | <1 | 1 | 1 |
| Tin | ppm | ASTM D6130 | >2 | <1 | 1 | 1 |
| Zinc | ppm | ASTM D6130 | >2 | 1 | 1 | 1 |

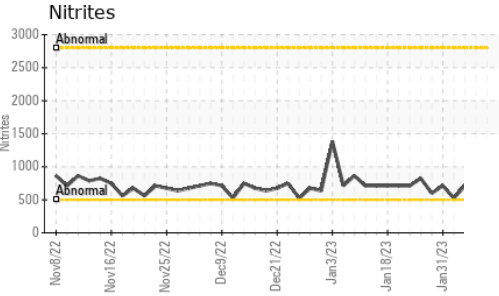
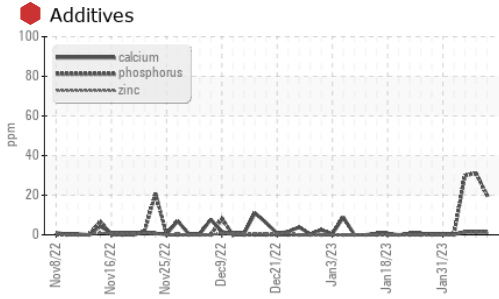
| CONTAMINANTS | | method | limit/base | current | history1 | history2 |
|--------------|-----|------------|------------|-----------|----------|----------|
| Chlorine | ppm | ASTM D6130 | | 12 | 19 | 21 |

| CARRIER SALTS | | method | limit/base | current | history1 | history2 |
|---------------|-----|------------|------------|-------------|----------|----------|
| Sodium | ppm | ASTM D6130 | | 5666 | 6673 | 6550 |
| Potassium | ppm | ASTM D6130 | | 148 | 215 | 658 |

| SCALE POTENTIAL | | method | limit/base | current | history1 | history2 |
|-----------------|-----|------------|------------|--------------|----------|----------|
| Calcium | ppm | ASTM D6130 | >5 | 1 | 2 | 2 |
| Magnesium | ppm | ASTM D6130 | >6 | <1 | <1 | <1 |

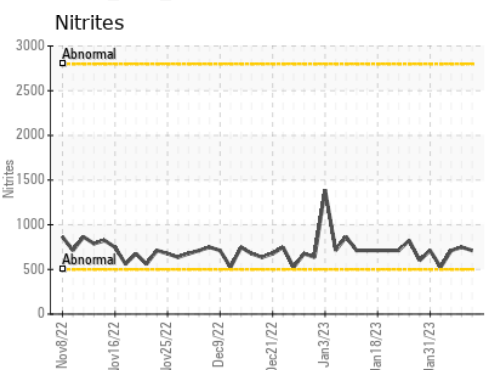
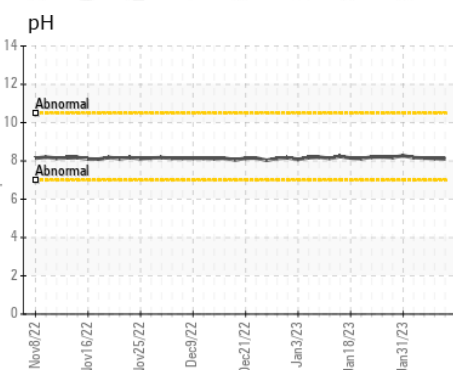
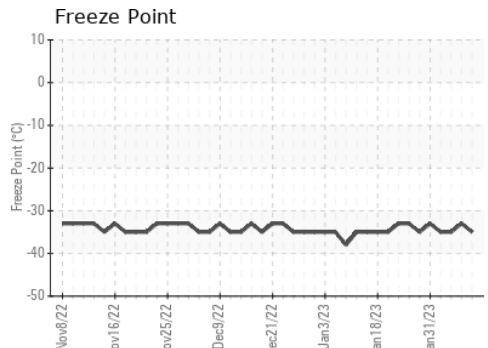
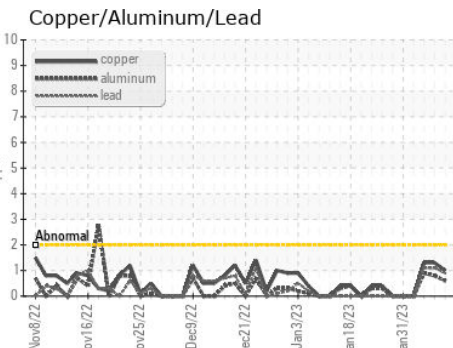
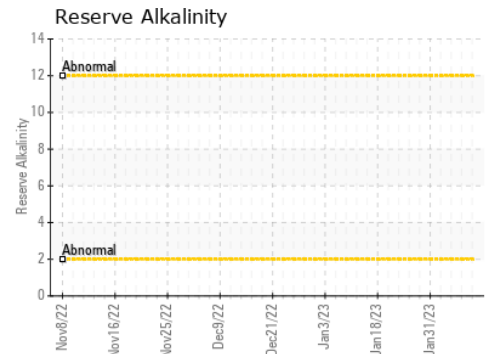
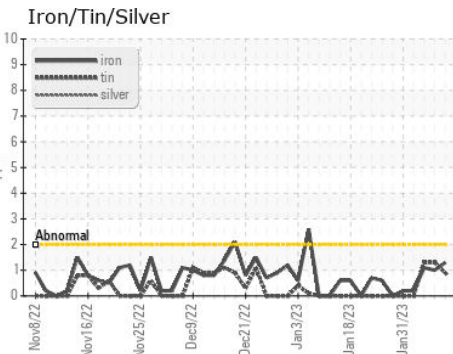


COOLANT REPORT



| VISUAL | method | limit/base | current | history1 | history2 |
|--------------------|---------|------------|---------|----------|----------|
| Coolant Color | *Visual | | Red | Red | Red |
| Coolant Appearance | *Visual | Clear | normal | normal | normal |
| Color | | | | | |
| Bottom | | | | | |

GRAPHS



Certificate L2367

Laboratory : WearCheck USA - 501 Madison Ave., Cary, NC 27513
 Sample No. : WC0786953
 Lab Number : 05762673
 Unique Number : 10332281
 Test Package : COOL- (Additional Tests: COOL, ICP)

WEARCHECK LUBRICATION SERVICES QA ACCOUNT
 501 Madison Ave
 Cary, NC
 US 27513
 Contact: WCLS CARY NC

To discuss this sample report, contact Customer Service at 1-800-237-1369.

* - Denotes test methods that are outside of the ISO 17025 scope of accreditation.

Statements of conformity to specifications are based on the simple acceptance decision rule (JCGM 106:2012)

T: (919)379-4102

F: (919)379-4050