



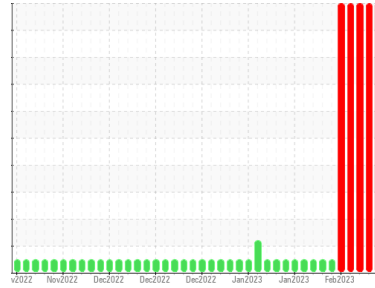
# COOLANT REPORT

Sample Rating Trend

COOL CHEMICALS



Area  
**WCLSNC**  
 Machine Id  
**QC COOL ELC NC 09012022**  
 Component  
**Coolant**  
 Fluid  
**CAT EXTENDED LIFE COOLANT (ELC) (--- GAL)**



## DIAGNOSIS

SAMPLE INFORMATION		method	limit/base	current	history1	history2
Sample Number	Client Info			<b>WC0786958</b>	WC0786954	WC0786953
Sample Date	Client Info			<b>13 Feb 2023</b>	09 Feb 2023	08 Feb 2023
Machine Age	hrs	Client Info		<b>0</b>	0	0
Oil Age	hrs	Client Info		<b>0</b>	0	0
Oil Changed	Client Info			<b>N/A</b>	N/A	N/A
Sample Status				<b>SEVERE</b>	SEVERE	SEVERE

PHYSICAL TEST RESULTS		method	limit/base	current	history1	history2
Specific Gravity		*ASTM D1298		<b>1.068</b>	1.067	1.068
pH	Scale 0-14	ASTM D1287		<b>8.24</b>	8.13	8.11
Nitrites	ppm	AP-053:2009		<b>712</b>	712	712
Reserve Alkalinity	Scale 0-20	*ASTM D1121		<b>---</b>	---	---
Percentage Glycol	%	ASTM D3321		<b>50.2</b>	49.9	50.1
Freezing Point	°F	ASTM D3321		<b>-35</b>	-33	-35
Total Dissolved Solids				<b>372.5</b>	340.0	347.0
Carboxylate				<b>fail</b>	pass	pass

CORROSION INHIBITORS		method	limit/base	current	history1	history2
Silicon	ppm	ASTM D6130	0	<b>45</b>	44	45
Phosphorus	ppm	ASTM D6130	0	<b>20</b>	33	20
Boron	ppm	ASTM D6130	0	<b>16</b>	19	17
Molybdenum	ppm	ASTM D6130	950	<b>1187</b>	1152	1200

CORROSION		method	limit/base	current	history1	history2
Iron	ppm	ASTM D6130	>2	<b>1</b>	1	1
Aluminum	ppm	ASTM D6130	>2	<b>&lt;1</b>	<1	<1
Copper	ppm	ASTM D6130	>2	<b>1</b>	1	1
Lead	ppm	ASTM D6130	>2	<b>&lt;1</b>	1	<1
Tin	ppm	ASTM D6130	>2	<b>&lt;1</b>	1	<1
Zinc	ppm	ASTM D6130	>2	<b>1</b>	1	1

CONTAMINANTS		method	limit/base	current	history1	history2
Chlorine	ppm	ASTM D6130		<b>11</b>	20	12

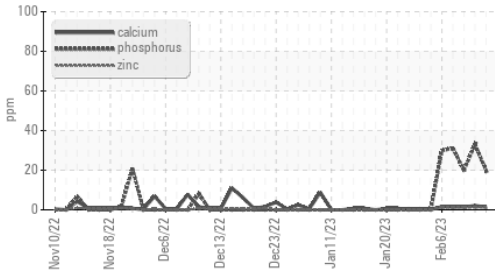
CARRIER SALTS		method	limit/base	current	history1	history2
Sodium	ppm	ASTM D6130		<b>5771</b>	6624	5666
Potassium	ppm	ASTM D6130		<b>129</b>	785	148

SCALE POTENTIAL		method	limit/base	current	history1	history2
Calcium	ppm	ASTM D6130	>5	<b>1</b>	2	1
Magnesium	ppm	ASTM D6130	>6	<b>&lt;1</b>	<1	<1

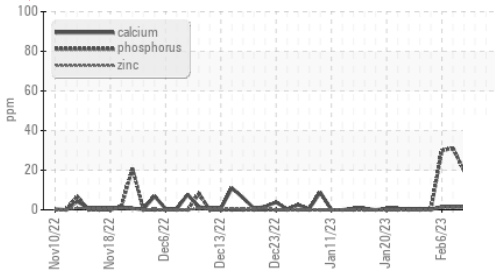


# COOLANT REPORT

## Additives



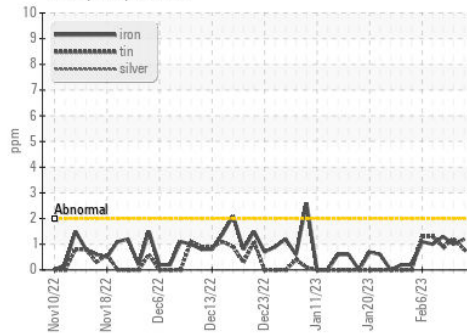
## Additives



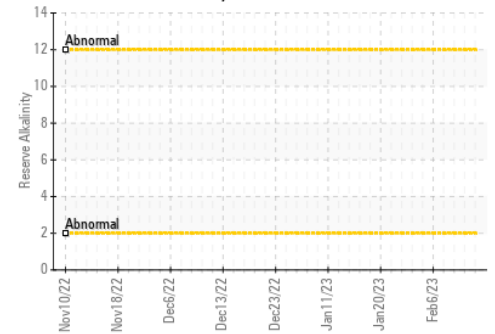
VISUAL	method	limit/base	current	history1	history2
Coolant Color	*Visual		Red	Pink	Red
Coolant Appearance	*Visual	Clear	normal	normal	normal
Color					
Bottom					

## GRAPHS

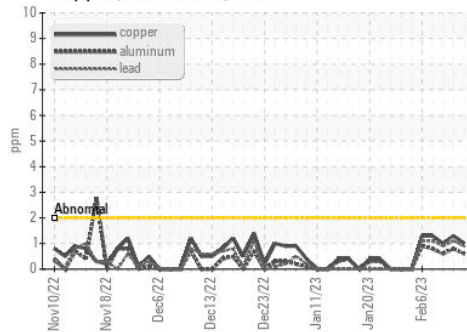
### Iron/Tin/Silver



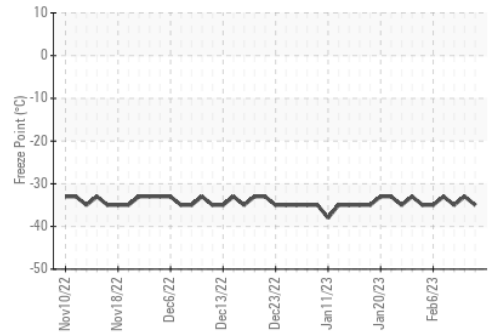
### Reserve Alkalinity



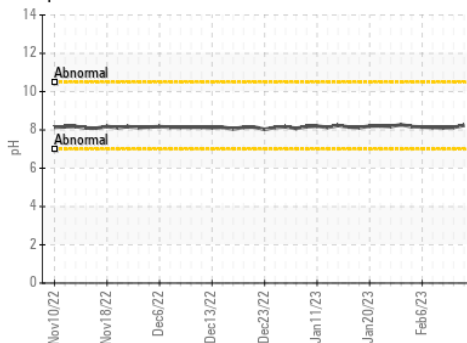
### Copper/Aluminum/Lead



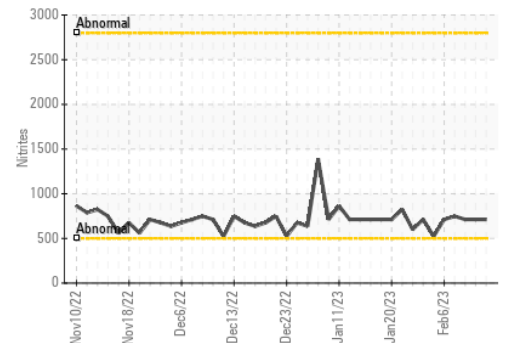
### Freeze Point



### pH



### Nitrites



Certificate L2367

Laboratory : WearCheck USA - 501 Madison Ave., Cary, NC 27513  
 Sample No. : WC0786958 Received : 13 Feb 2023  
 Lab Number : 05766331 Diagnosed : 02 Oct 2023  
 Unique Number : 10335939 Diagnostician : System  
 Test Package : COOL- ( Additional Tests: COOL, ICP )

WEARCHECK LUBRICATION SERVICES QA ACCOUNT  
 501 Madison Ave  
 Cary, NC  
 US 27513  
 Contact: WCLS CARY NC

To discuss this sample report, contact Customer Service at 1-800-237-1369.

\* - Denotes test methods that are outside of the ISO 17025 scope of accreditation.

Statements of conformity to specifications are based on the simple acceptance decision rule (JCGM 106:2012)

T: (919)379-4102

F: (919)379-4050