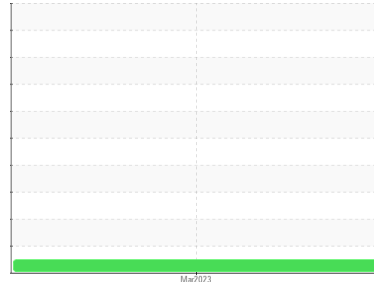




FUEL REPORT

Sample Rating Trend

NORMAL



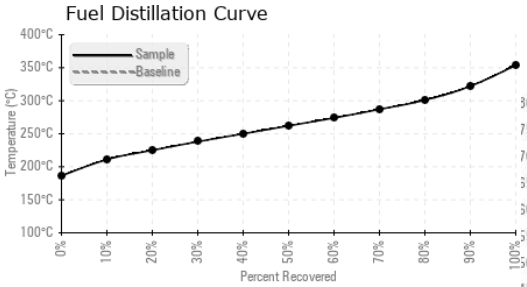
Machine Id
SIMDIS 4
 Component
Diesel Fuel
 Fluid
{not provided} (--- GAL)

DIAGNOSIS

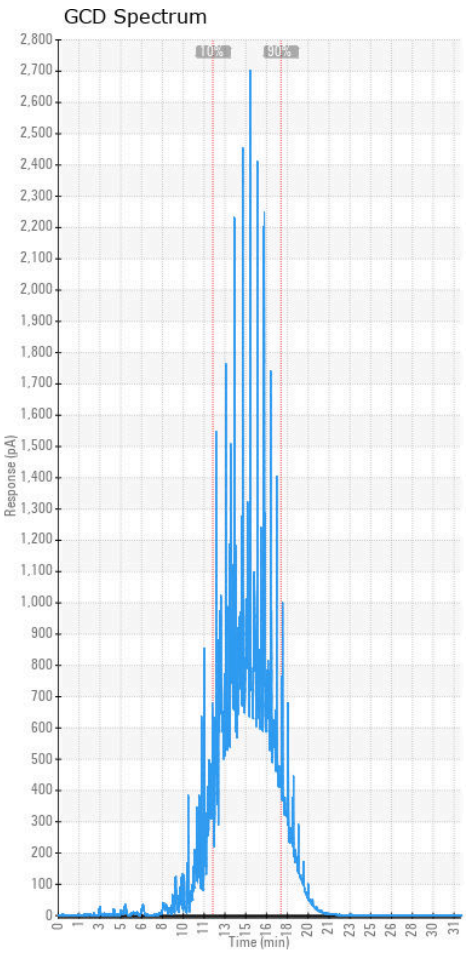
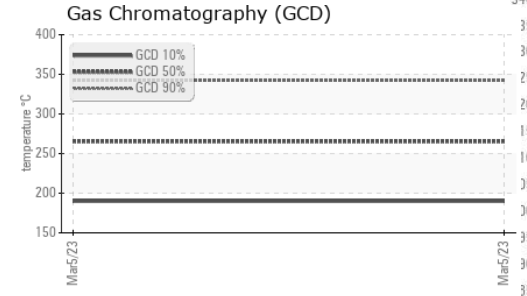
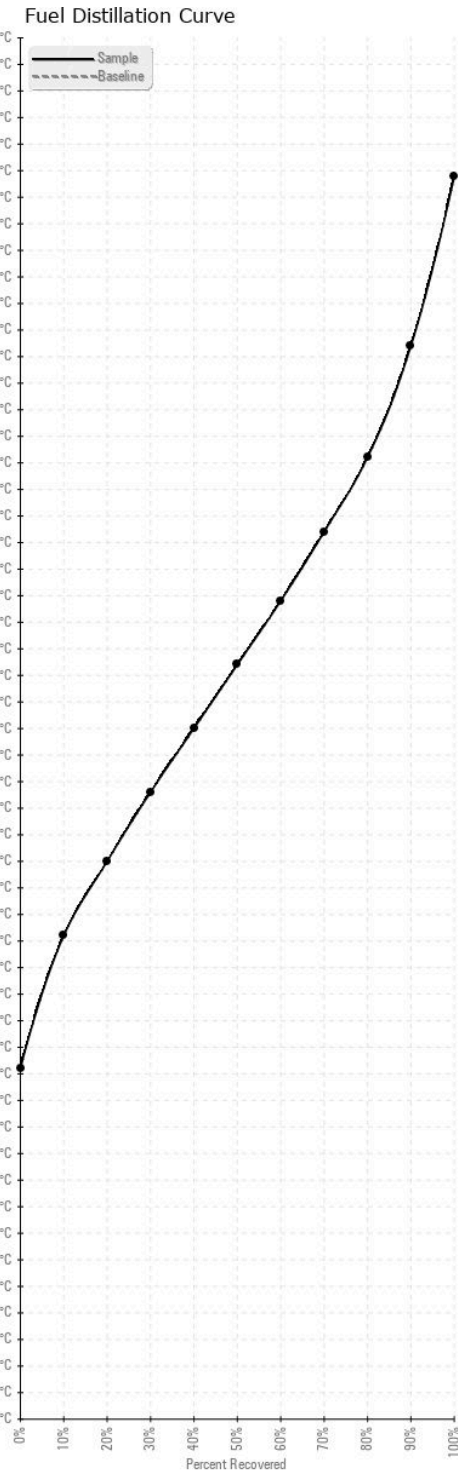
SAMPLE INFORMATION		method	limit/base	current	history1	history2
Sample Number	Client Info			WC05784352	---	---
Sample Date	Client Info			05 Mar 2023	---	---
Machine Age	hrs	Client Info		0	---	---
Sample Status				NORMAL	---	---

DISTILLATION		method	limit/base	current	history1	history2
Initial Boiling Point	°C	ASTM D86		186	---	---
5% Distillation Point	°C	ASTM D86		203	---	---
10% Distill Point	°C	ASTM D86		211	---	---
15% Distillation Point	°C	ASTM D86		218	---	---
20% Distill Point	°C	ASTM D86		225	---	---
30% Distill Point	°C	ASTM D86		238	---	---
40% Distill Point	°C	ASTM D86		250	---	---
50% Distill Point	°C	ASTM D86		262	---	---
60% Distill Point	°C	ASTM D86		274	---	---
70% Distill Point	°C	ASTM D86		287	---	---
80% Distill Point	°C	ASTM D86		301	---	---
85% Distillation Point	°C	ASTM D86		312	---	---
90% Distill Point	°C	ASTM D86		322	---	---
95% Distillation Point	°C	ASTM D86		339	---	---
Final Boiling Point	°C	ASTM D86		354	---	---

SAMPLE IMAGES		method	limit/base	current	history1	history2
Color					<i>no image</i>	<i>no image</i>
Bottom					<i>no image</i>	<i>no image</i>



GRAPHS



Laboratory : WearCheck USA - 501 Madison Ave., Cary, NC 27513
Sample No. : WC05784352 **Received** : 06 Mar 2023
Lab Number : **05784352** **Diagnosed** : 02 Oct 2023
Unique Number : 10364022 **Diagnostician** : System
Test Package : DF-5 (Additional Tests: API, Cetane, FUEL, GCD, Screen)

WEARCHECK USA
 501 Madison Ave
 Cary, NC
 US 27513
 Contact: CHEVRON DEMO
 jfazenbaker@nc.rr.com
 T:
 F: (919)379-4050

Certificate L2367
 To discuss this sample report, contact Customer Service at 1-800-237-1369.
 * - Denotes test methods that are outside of the ISO 17025 scope of accreditation.
 Statements of conformity to specifications are based on the simple acceptance decision rule (JCGM 106:2012)