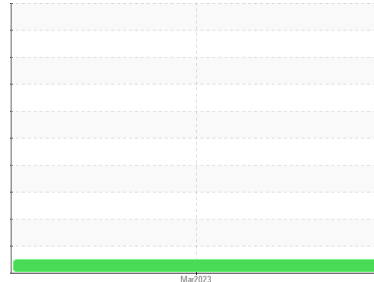




FUEL REPORT

Sample Rating Trend

NORMAL



Machine Id
SIMDIS 5
 Component
Diesel Fuel
 Fluid
{not provided} (--- GAL)

DIAGNOSIS

SAMPLE INFORMATION		method	limit/base	current	history1	history2
Sample Number	Client Info			WC05784353	---	---
Sample Date	Client Info			05 Mar 2023	---	---
Machine Age	hrs	Client Info		0	---	---
Sample Status				NORMAL	---	---

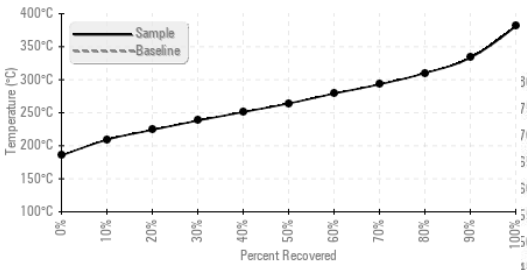
DISTILLATION		method	limit/base	current	history1	history2
Initial Boiling Point	°C	ASTM D86		185	---	---
5% Distillation Point	°C	ASTM D86		202	---	---
10% Distill Point	°C	ASTM D86		209	---	---
15% Distillation Point	°C	ASTM D86		217	---	---
20% Distill Point	°C	ASTM D86		224	---	---
30% Distill Point	°C	ASTM D86		238	---	---
40% Distill Point	°C	ASTM D86		251	---	---
50% Distill Point	°C	ASTM D86		264	---	---
60% Distill Point	°C	ASTM D86		279	---	---
70% Distill Point	°C	ASTM D86		293	---	---
80% Distill Point	°C	ASTM D86		310	---	---
85% Distillation Point	°C	ASTM D86		322	---	---
90% Distill Point	°C	ASTM D86		333	---	---
95% Distillation Point	°C	ASTM D86		351	---	---
Final Boiling Point	°C	ASTM D86		381	---	---

SAMPLE IMAGES		method	limit/base	current	history1	history2
Color					<i>no image</i>	<i>no image</i>
Bottom					<i>no image</i>	<i>no image</i>



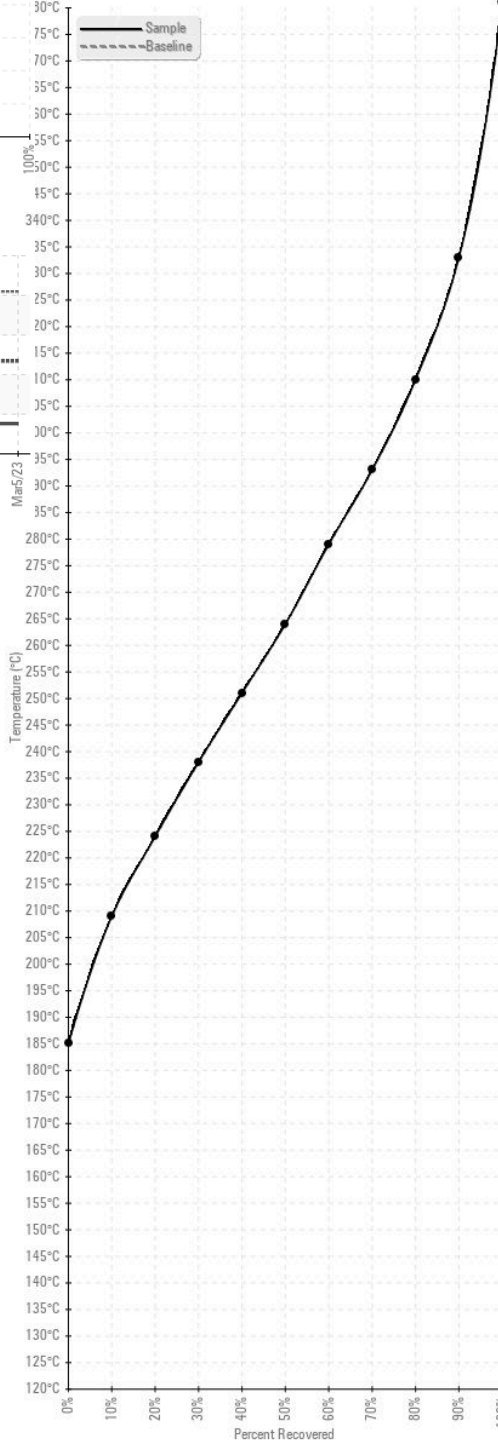
FUEL REPORT

Fuel Distillation Curve

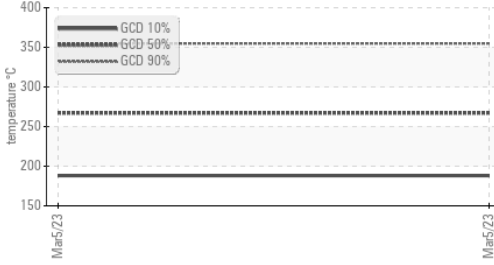


GRAPHS

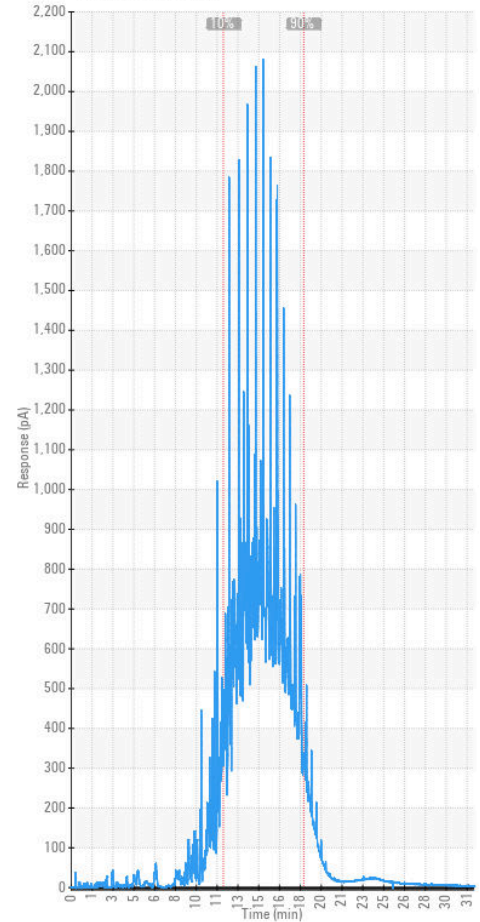
Fuel Distillation Curve



Gas Chromatography (GCD)



GCD Spectrum



Certificate L2367

Laboratory : WearCheck USA - 501 Madison Ave., Cary, NC 27513
Sample No. : WC05784353 **Received** : 06 Mar 2023
Lab Number : 05784353 **Diagnosed** : 02 Oct 2023
Unique Number : 10364023 **Diagnostician** : System
Test Package : DF-5 (Additional Tests: API, Cetane, FUEL, GCD, Screen)

To discuss this sample report, contact Customer Service at 1-800-237-1369.

* - Denotes test methods that are outside of the ISO 17025 scope of accreditation.

Statements of conformity to specifications are based on the simple acceptance decision rule (JCGM 106:2012)

WEARCHECK USA

501 Madison Ave
Cary, NC
US 27513

Contact: CHEVRON DEMO
jfazenbaker@nc.rr.com

T:
F: (919)379-4050