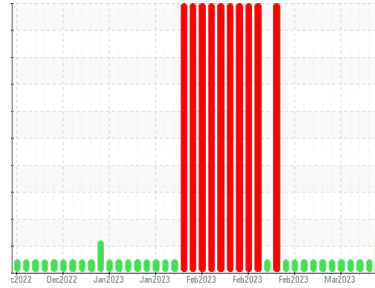




COOLANT REPORT

Sample Rating Trend



COOL CHEMICALS



Area
WCLSNC
 Machine Id
QC COOL ELC NC 09012022
 Component
Coolant
 Fluid
CAT EXTENDED LIFE COOLANT (ELC) (--- GAL)

DIAGNOSIS

SAMPLE INFORMATION		method	limit/base	current	history1	history2
Sample Number	Client Info			WC0796876	WC0796875	WC0796874
Sample Date	Client Info			10 Mar 2023	09 Mar 2023	08 Mar 2023
Machine Age	hrs	Client Info		0	0	0
Oil Age	hrs	Client Info		0	0	0
Oil Changed	Client Info			N/A	N/A	N/A
Sample Status				ABNORMAL	NORMAL	NORMAL

PHYSICAL TEST RESULTS		method	limit/base	current	history1	history2
Specific Gravity		*ASTM D1298		1.067	1.067	1.067
pH	Scale 0-14	ASTM D1287		8.23	8.21	8.21
Nitrites	ppm	AP-053:2009		748	712	712
Reserve Alkalinity	Scale 0-20	*ASTM D1121		---	---	---
Percentage Glycol	%	ASTM D3321		49.8	49.7	49.7
Freezing Point	°F	ASTM D3321		-33	-33	-33
Total Dissolved Solids				300.5	543.5	406.5
Carboxylate				pass	pass	pass

CORROSION INHIBITORS		method	limit/base	current	history1	history2
Silicon	ppm	ASTM D6130	0	18	16	17
Phosphorus	ppm	ASTM D6130	0	0	0	0
Boron	ppm	ASTM D6130	0	0	0	2
Molybdenum	ppm	ASTM D6130	950	1200	1056	1137

CORROSION		method	limit/base	current	history1	history2
Iron	ppm	ASTM D6130	>2	0	0	0
Aluminum	ppm	ASTM D6130	>2	0	0	<1
Copper	ppm	ASTM D6130	>2	<1	<1	0
Lead	ppm	ASTM D6130	>2	<1	<1	<1
Tin	ppm	ASTM D6130	>2	0	0	<1
Zinc	ppm	ASTM D6130	>2	0	0	0

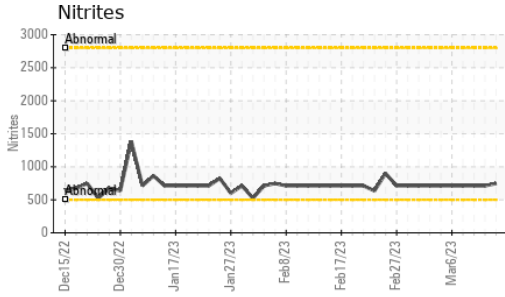
CONTAMINANTS		method	limit/base	current	history1	history2
Chlorine	ppm	ASTM D6130		23	27	24

CARRIER SALTS		method	limit/base	current	history1	history2
Sodium	ppm	ASTM D6130		▲ 5941	5673	5995
Potassium	ppm	ASTM D6130		0	0	8

SCALE POTENTIAL		method	limit/base	current	history1	history2
Calcium	ppm	ASTM D6130	>5	<1	<1	0
Magnesium	ppm	ASTM D6130	>6	0	0	0

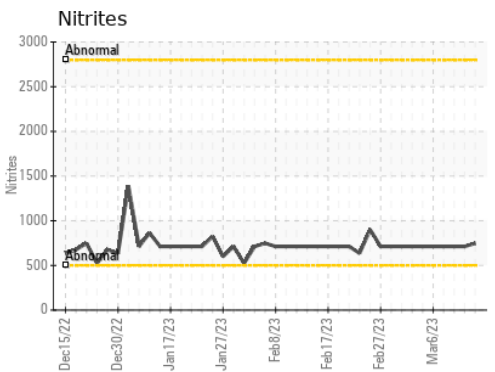
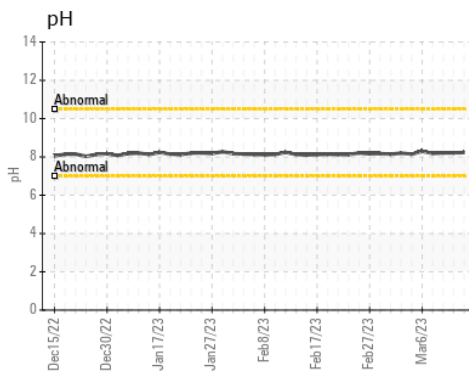
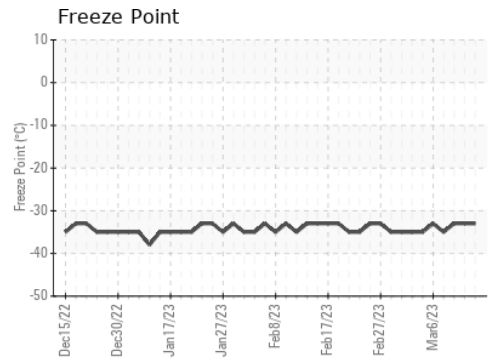
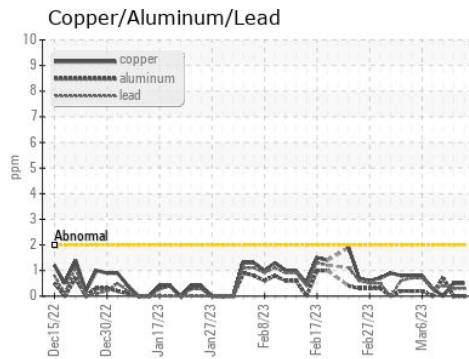
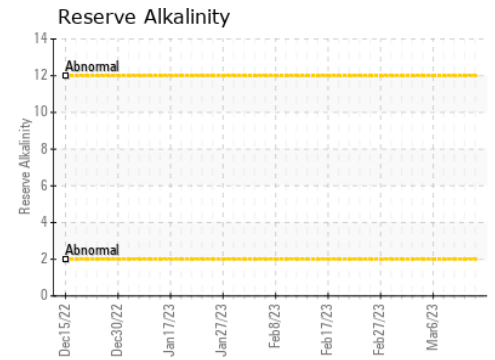
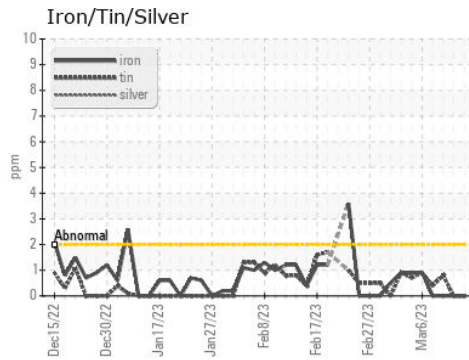


COOLANT REPORT



VISUAL	method	limit/base	current	history1	history2
Coolant Color	*Visual		Red	Red	Red
Coolant Appearance	*Visual	Clear	normal	normal	normal
Color					
Bottom					

GRAPHS



Certificate L2367

Laboratory : WearCheck USA - 501 Madison Ave., Cary, NC 27513
Sample No. : WC0796876 **Received** : 10 Mar 2023
Lab Number : 05789336 **Diagnosed** : 02 Oct 2023
Unique Number : 10374007 **Diagnostician** : System
Test Package : COOL- (Additional Tests: COOL, ICP)

WEARCHECK LUBRICATION SERVICES QA ACCOUNT
 501 Madison Ave
 Cary, NC
 US 27513
 Contact: WCLS CARY NC

To discuss this sample report, contact Customer Service at 1-800-237-1369.

* - Denotes test methods that are outside of the ISO 17025 scope of accreditation.

Statements of conformity to specifications are based on the simple acceptance decision rule (JCGM 106:2012)

T: (919)379-4102

F: (919)379-4050