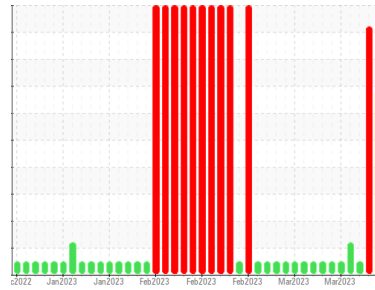




COOLANT REPORT

Sample Rating Trend



COOL CHEMICALS



Area
WCLSNC
 Machine Id
QC COOL ELC NC 09012022
 Component
Coolant
 Fluid
CAT EXTENDED LIFE COOLANT (ELC) (--- GAL)

DIAGNOSIS

SAMPLE INFORMATION		method	limit/base	current	history1	history2
Sample Number	Client Info			WC0796881	WC0796880	WC0796879
Sample Date	Client Info			15 Mar 2023	14 Mar 2023	13 Mar 2023
Machine Age	hrs	Client Info		0	0	0
Oil Age	hrs	Client Info		0	0	0
Oil Changed	Client Info			N/A	N/A	N/A
Sample Status				SEVERE	SEVERE	NORMAL

PHYSICAL TEST RESULTS		method	limit/base	current	history1	history2
Specific Gravity		*ASTM D1298		1.067	1.067	1.067
pH	Scale 0-14	ASTM D1287		8.23	8.22	8.22
Nitrites	ppm	AP-053:2009		712	676	712
Reserve Alkalinity	Scale 0-20	*ASTM D1121		---	---	---
Percentage Glycol	%	ASTM D3321		49.7	49.8	49.8
Freezing Point	°F	ASTM D3321		-33	-33	-33
Total Dissolved Solids				489.0	343.5	334.5
Carboxylate				pass	pass	pass

CORROSION INHIBITORS		method	limit/base	current	history1	history2
Silicon	ppm	ASTM D6130	0	26	▲ 27	18
Phosphorus	ppm	ASTM D6130	0	0	3	0
Boron	ppm	ASTM D6130	0	▲ 14	▲ 15	0
Molybdenum	ppm	ASTM D6130	950	1200	1200	1200

CORROSION		method	limit/base	current	history1	history2
Iron	ppm	ASTM D6130	>2	0	0	0
Aluminum	ppm	ASTM D6130	>2	<1	<1	0
Copper	ppm	ASTM D6130	>2	1	1	<1
Lead	ppm	ASTM D6130	>2	1	1	<1
Tin	ppm	ASTM D6130	>2	2	2	0
Zinc	ppm	ASTM D6130	>2	1	1	0

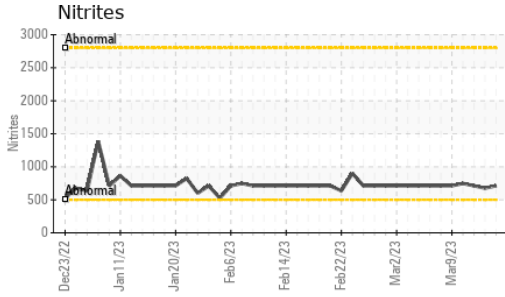
CONTAMINANTS		method	limit/base	current	history1	history2
Chlorine	ppm	ASTM D6130		40	42	21

CARRIER SALTS		method	limit/base	current	history1	history2
Sodium	ppm	ASTM D6130		● 6206	● 6260	5761
Potassium	ppm	ASTM D6130		30	55	0

SCALE POTENTIAL		method	limit/base	current	history1	history2
Calcium	ppm	ASTM D6130	>5	2	2	<1
Magnesium	ppm	ASTM D6130	>6	1	1	0

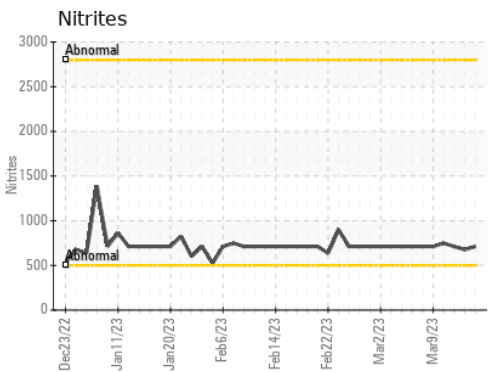
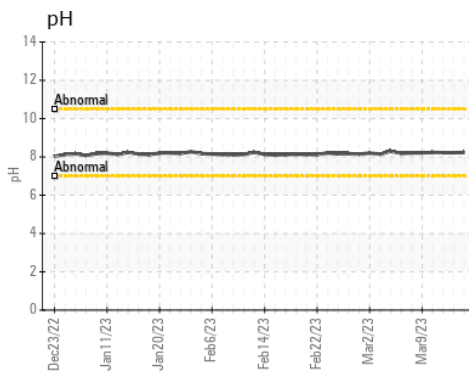
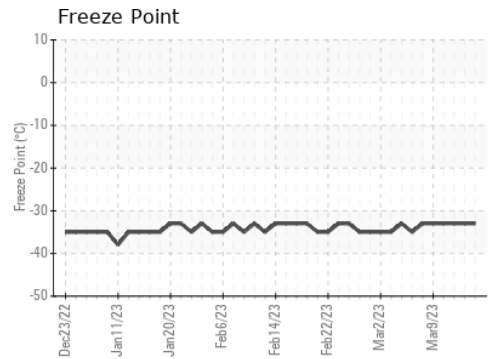
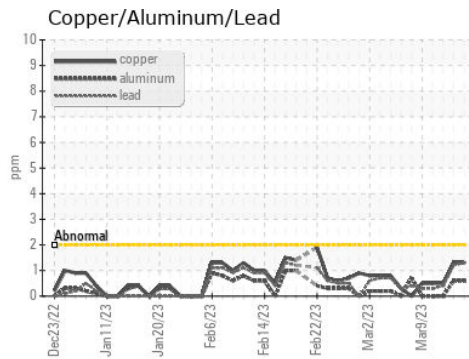
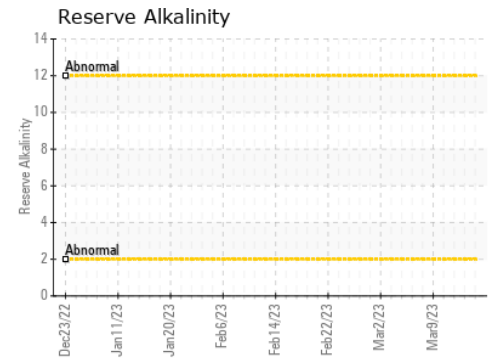
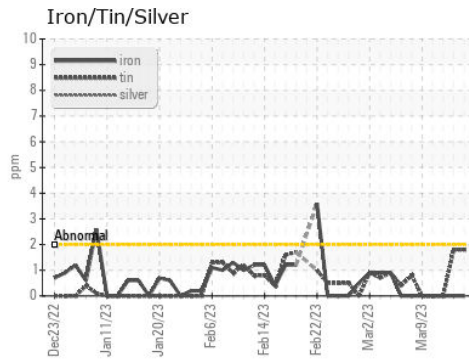


COOLANT REPORT



VISUAL	method	limit/base	current	history1	history2
Coolant Color	*Visual		Red	Red	Red
Coolant Appearance	*Visual	Clear	normal	normal	normal
Color					
Bottom					

GRAPHS



Certificate L2367

Laboratory : WearCheck USA - 501 Madison Ave., Cary, NC 27513
Sample No. : WC0796881 **Received** : 15 Mar 2023
Lab Number : 05792430 **Diagnosed** : 02 Oct 2023
Unique Number : 10377101 **Diagnostician** : System
Test Package : COOL- (Additional Tests: COOL, ICP)

WEARCHECK LUBRICATION SERVICES QA ACCOUNT
 501 Madison Ave
 Cary, NC
 US 27513
 Contact: WCLS CARY NC

To discuss this sample report, contact Customer Service at 1-800-237-1369.

* - Denotes test methods that are outside of the ISO 17025 scope of accreditation.

Statements of conformity to specifications are based on the simple acceptance decision rule (JCGM 106:2012)

T: (919)379-4102

F: (919)379-4050