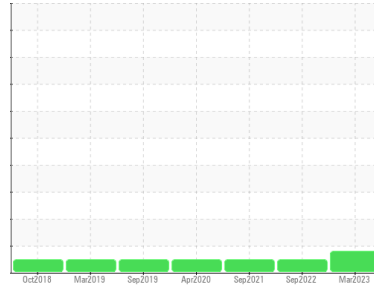




COOLANT REPORT

Area
KANSAS/44/EG - DOZER
 Machine Id
36.31L [KANSAS^44^EG - DOZER]
 Component
Coolant
 Fluid
CAT EXTENDED LIFE COOLANT (ELC) (--- GAL)

Sample Rating Trend



WEAR



DIAGNOSIS

▲ Recommendation

No corrective action is recommended at this time. The fluid is suitable for further service. (Customer Sample Comment: 6733 hrs)

▲ Corrosion

The copper level is abnormal.

Contaminants

There is no indication of any contamination in the coolant.

Coolant Condition

The carboxylate level of this fluid is acceptable. The glycol level is acceptable. The pH level of this fluid is within the acceptable limits.

SAMPLE INFORMATION

method	limit/base	current	history1	history2
Sample Number	Client Info	WC0746821	WC0712239	WC0584698
Sample Date	Client Info	13 Mar 2023	19 Sep 2022	14 Sep 2021
Machine Age	hrs	9677	9596	8663
Oil Age	hrs	9677	9596	8607
Oil Changed	Client Info	N/A	Not Changd	Not Changd
Sample Status		ABNORMAL	NORMAL	NORMAL

PHYSICAL TEST RESULTS

method	limit/base	current	history1	history2
Specific Gravity	*ASTM D1298	1.069	1.068	---
pH	Scale 0-14 ASTM D1287	6.99	7.82	7.26
Nitrites	ppm AP-053:2009	900	412	412
Reserve Alkalinity	Scale 0-20 *ASTM D1121	---	---	---
Percentage Glycol	% ASTM D3321	51.6	50.3	50
Freezing Point	°F ASTM D3321	-38	-35	-39
Total Dissolved Solids		344.0	351.0	374.5
Carboxylate		pass	fail	fail

CORROSION INHIBITORS

method	limit/base	current	history1	history2
Silicon	ppm ASTM D6130	58	20	21
Phosphorus	ppm ASTM D6130	<1	34	<1
Boron	ppm ASTM D6130	0	0	0
Molybdenum	ppm ASTM D6130	1200	1168	1200

CORROSION

method	limit/base	current	history1	history2
Iron	ppm ASTM D6130	0	0	<1
Aluminum	ppm ASTM D6130	4	<1	2
Copper	ppm ASTM D6130	▲ 11	<1	<1
Lead	ppm ASTM D6130	<1	0	<1
Tin	ppm ASTM D6130	1	0	<1
Zinc	ppm ASTM D6130	26	0	<1

CONTAMINANTS

method	limit/base	current	history1	history2
Chlorine	ppm ASTM D6130	145	4	10

CARRIER SALTS

method	limit/base	current	history1	history2
Sodium	ppm ASTM D6130	7119	3215	3612
Potassium	ppm ASTM D6130	1574	137	186

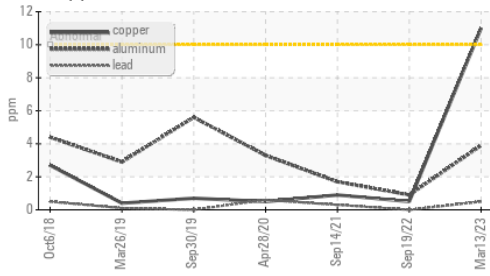
SCALE POTENTIAL

method	limit/base	current	history1	history2
Calcium	ppm ASTM D6130	5	2	4
Magnesium	ppm ASTM D6130	7	0	1

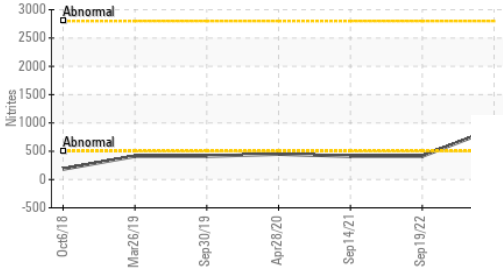


COOLANT REPORT

▲ Copper/Aluminum/Lead



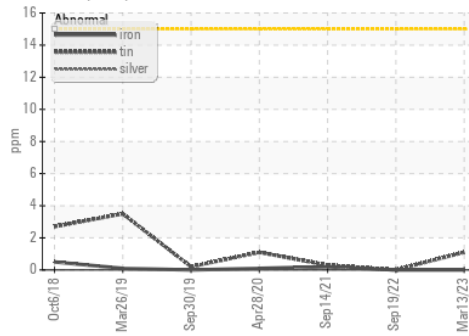
Nitrites



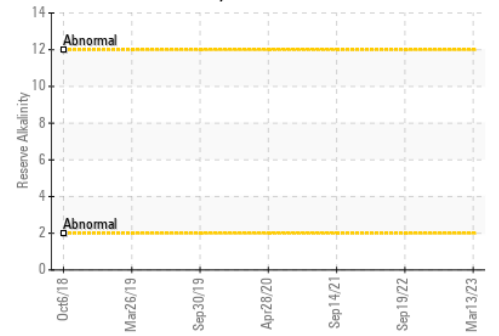
VISUAL	method	limit/base	current	history1	history2
Coolant Color	*Visual		Red	Red	Red
Coolant Appearance	*Visual	Clear	normal	normal	normal
Color					
Bottom					

GRAPHS

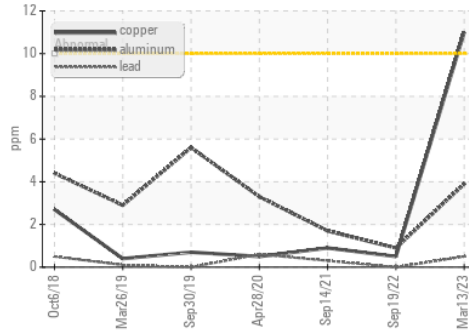
Iron/Tin/Silver



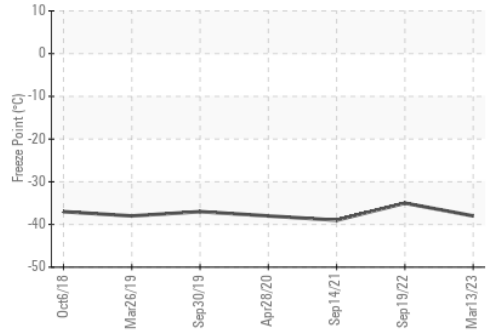
Reserve Alkalinity



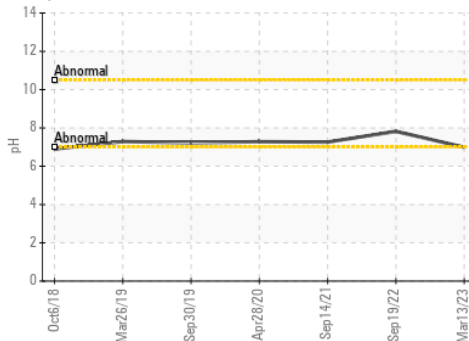
▲ Copper/Aluminum/Lead



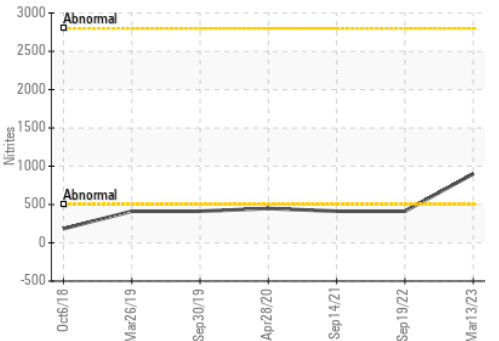
Freeze Point



pH



Nitrites



Certificate L2367

Laboratory : WearCheck USA - 501 Madison Ave., Cary, NC 27513
Sample No. : WC0746821 **Received** : 21 Mar 2023
Lab Number : 05798178 **Diagnosed** : 24 Mar 2023
Unique Number : 10387862 **Diagnostician** : Jonathan Hester
Test Package : COOL- (Additional Tests: COOL, ICP)

SHERWOOD CONSTRUCTION CO INC
 3219 WEST MAY ST
 WICHITA, KS
 US 67213
 Contact: DOUG KING
 doug.king@sherwood.net
 T: (316)617-3161
 F: x:

To discuss this sample report, contact Customer Service at 1-800-237-1369.

* - Denotes test methods that are outside of the ISO 17025 scope of accreditation.

Statements of conformity to specifications are based on the simple acceptance decision rule (JCGM 106:2012)