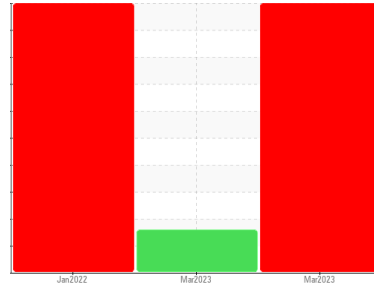




COOLANT REPORT

Sample Rating Trend



WEAR



Area
FRONTIER II [200006776]
 Machine Id
04WEA86936
 Component
Coolant
 Fluid
ISENTHAL VARIDOS 45 (--- LTR)

DIAGNOSIS

Recommendation

We advise that you inspect for the source(s) of wear. We recommend an early resample to monitor this condition.

Corrosion

Metal levels are high indicating corrosion in the cooling system.

Contaminants

There is no indication of any contamination in the coolant.

Coolant Condition

The glycol level is acceptable. The pH level of this fluid is within the acceptable limits.

SAMPLE INFORMATION

	method	limit/base	current	history 1	history 2
Sample Number	Client Info		NX05799040	NX05799032	NX05471857
Sample Date	Client Info		02 Mar 2023	01 Mar 2023	28 Jan 2022
Machine Age	hrs	Client Info	0	0	0
Oil Age	hrs	Client Info	0	0	0
Oil Changed	Client Info		N/A	N/A	N/A
Sample Status			SEVERE	ABNORMAL	SEVERE

PHYSICAL TEST RESULTS

	method	limit/base	current	history 1	history 2
Specific Gravity	*ASTM D1298		1.059	1.060	---
pH	Scale 0-14	ASTM D1287 8.5	8.42	8.25	8.49
Nitrites	ppm	AP-053:2009 260	184	72	148
Reserve Alkalinity	Scale 0-20	*ASTM D1121	---	---	---
Percentage Glycol	%	ASTM D3321 45	43.3	44.2	43
Freezing Point	°F	ASTM D3321 -24	-19	-21	-21
Total Dissolved Solids			161.0	246.0	153.5
Carboxylate			n/a	n/a	fail

CORROSION INHIBITORS

	method	limit/base	current	history 1	history 2
Silicon	ppm	ASTM D6130 25	114	16	61
Phosphorus	ppm	ASTM D6130 140	163	15	89
Boron	ppm	ASTM D6130 0	0	0	<1
Molybdenum	ppm	ASTM D6130 1075	1200	382	940

CORROSION

	method	limit/base	current	history 1	history 2
Iron	ppm	ASTM D6130 >15	282	29	135
Aluminum	ppm	ASTM D6130 >10	251	30	167
Copper	ppm	ASTM D6130 >10	<1	<1	2
Lead	ppm	ASTM D6130 >10	2	<1	<1
Tin	ppm	ASTM D6130 >10	1	<1	0
Zinc	ppm	ASTM D6130	224	20	41

CONTAMINANTS

	method	limit/base	current	history 1	history 2
Chlorine	ppm	ASTM D6130	106	18	83

CARRIER SALTS

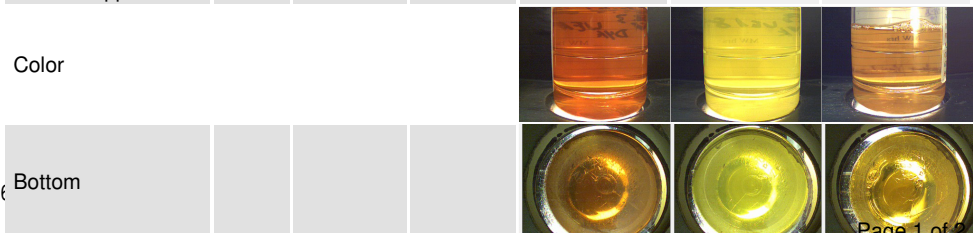
	method	limit/base	current	history 1	history 2
Sodium	ppm	ASTM D6130 1075	1156	5534	501
Potassium	ppm	ASTM D6130 5	2307	519	606

SCALE POTENTIAL

	method	limit/base	current	history 1	history 2
Calcium	ppm	ASTM D6130	9	2	8
Magnesium	ppm	ASTM D6130	7	1	6

VISUAL

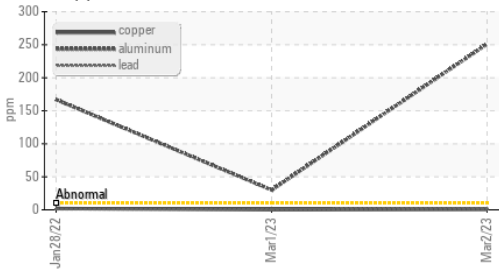
	method	limit/base	current	history 1	history 2
Coolant Color	*Visual	DkYlw	Orange	Yellow	Yellow
Coolant Appearance	*Visual	Clear	normal	normal	normal





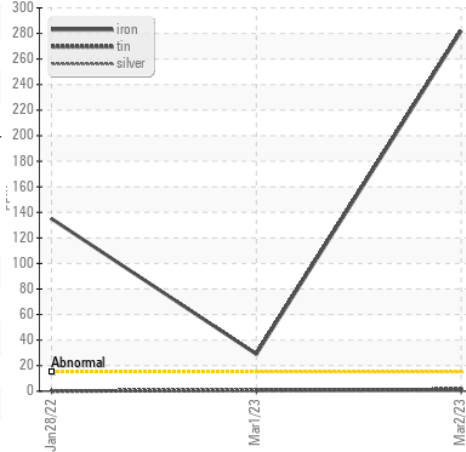
COOLANT REPORT

Copper/Aluminum/Lead

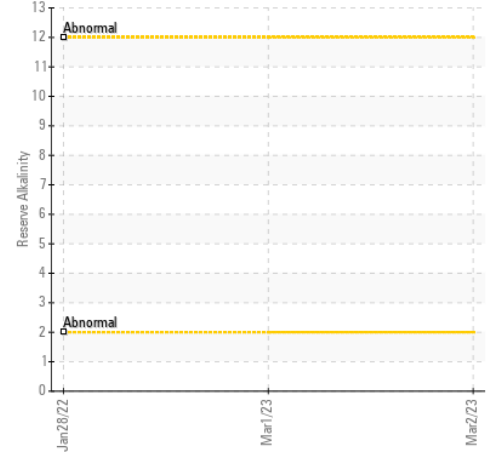


GRAPHS

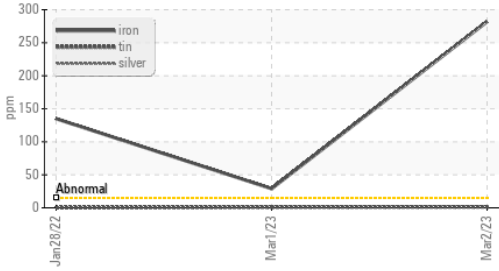
Iron/Tin/Silver



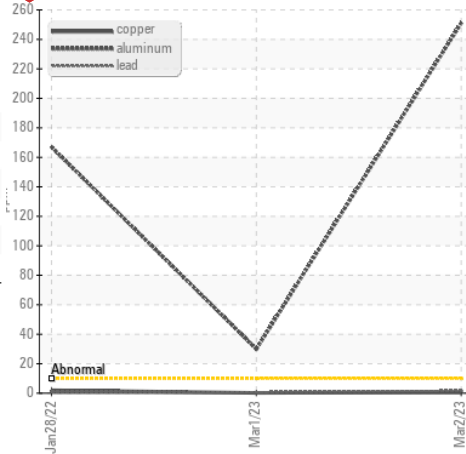
Reserve Alkalinity



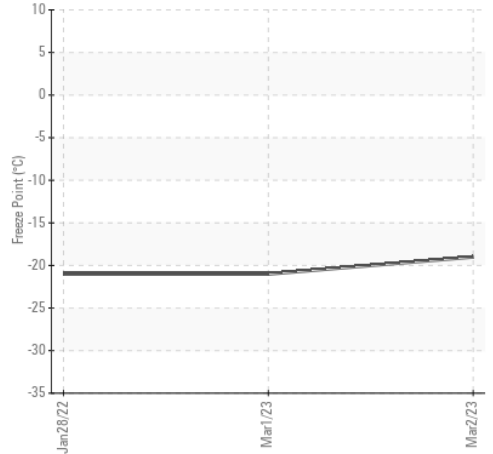
Iron/Tin/Silver



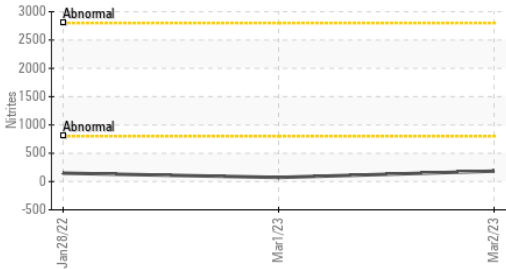
Copper/Aluminum/Lead



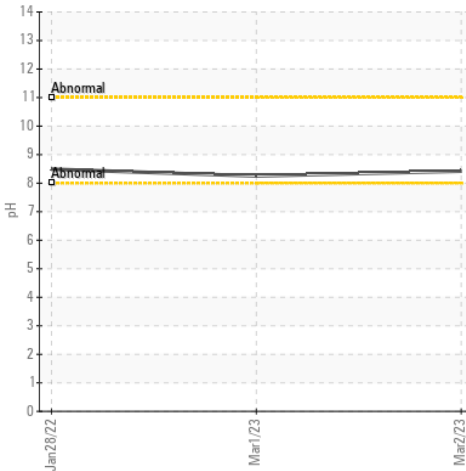
Freeze Point



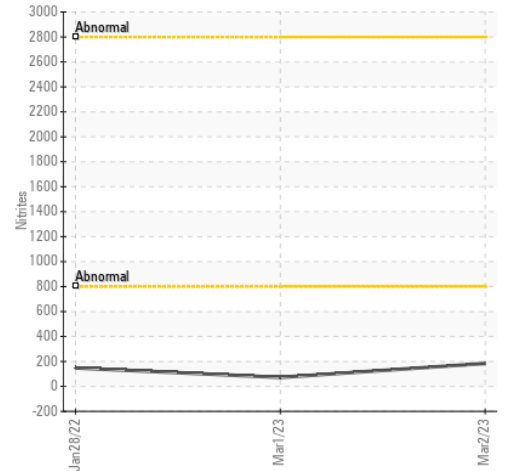
Nitrites



pH



Nitrites



Certificate L2367

Laboratory : WearCheck USA - 501 Madison Ave., Cary, NC 27513
Sample No. : NX05799040 **Received** : 22 Mar 2023
Lab Number : 05799040 **Diagnosed** : 03 Apr 2023
Unique Number : 10388724 **Diagnostician** : Doug Bogart
Test Package : COOL- (Additional Tests: COOL, ICP)

NORDEX USA - Chicago
 300 SOUTH WACKER DRIVE, SUITE 1500
 CHICAGO, IL
 US 60606
 Contact: DEVIN LINEHAN
 DLinehan@nordex-online.com
 T: (312)386-4124
 F: (312)386-7102

To discuss this sample report, contact Customer Service at 1-800-237-1369.

* - Denotes test methods that are outside of the ISO 17025 scope of accreditation.

Statements of conformity to specifications are based on the simple acceptance decision rule (JCGM 106:2012)