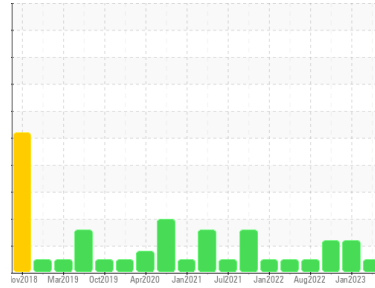


OIL ANALYSIS REPORT

Sample Rating Trend



NORMAL



Area
DIAMOND BLUE
Machine Id
SULLAIR 201307290039 - DOE RUN
Component
Compressor

DIAGNOSIS

Recommendation

Resample at the next service interval to monitor.

Wear

All component wear rates are normal.

Contamination

There is no indication of any contamination in the oil.

Fluid Condition

The AN level is acceptable for this fluid. The condition of the oil is suitable for further service.

SAMPLE INFORMATION

	method	limit/base	current	history1	history2
Sample Number	Client Info		UCH05814001	UCH05763632	UCH05685200
Sample Date	Client Info		27 Mar 2023	30 Jan 2023	24 Oct 2022
Machine Age	hrs	Client Info	79357	78017	75663
Oil Age	hrs	Client Info	4000	2000	2000
Oil Changed	Client Info		Changed	Not Changd	Not Changd
Sample Status			NORMAL	ATTENTION	ABNORMAL

CONTAMINATION

	method	limit/base	current	history1	history2
Water	WC Method	>0.1	NEG	NEG	NEG

WEAR METALS

	method	limit/base	current	history1	history2
Iron	ppm	ASTM D5185m >50	0	<1	0
Chromium	ppm	ASTM D5185m >10	0	0	0
Nickel	ppm	ASTM D5185m	0	0	0
Titanium	ppm	ASTM D5185m	0	0	0
Silver	ppm	ASTM D5185m	0	0	0
Aluminum	ppm	ASTM D5185m >25	0	2	<1
Lead	ppm	ASTM D5185m >25	0	10	6
Copper	ppm	ASTM D5185m >50	0	3	2
Tin	ppm	ASTM D5185m >15	<1	<1	<1
Vanadium	ppm	ASTM D5185m	0	0	0
Cadmium	ppm	ASTM D5185m	0	<1	<1

ADDITIVES

	method	limit/base	current	history1	history2
Boron	ppm	ASTM D5185m	0	0	0
Barium	ppm	ASTM D5185m 745	1010	407	365
Molybdenum	ppm	ASTM D5185m 0.0	0	0	0
Manganese	ppm	ASTM D5185m	<1	0	<1
Magnesium	ppm	ASTM D5185m 0.0	4	5	3
Calcium	ppm	ASTM D5185m 1	4	13	10
Phosphorus	ppm	ASTM D5185m 3	5	11	7
Zinc	ppm	ASTM D5185m 0.1	1	10	7
Sulfur	ppm	ASTM D5185m 240	383	540	527

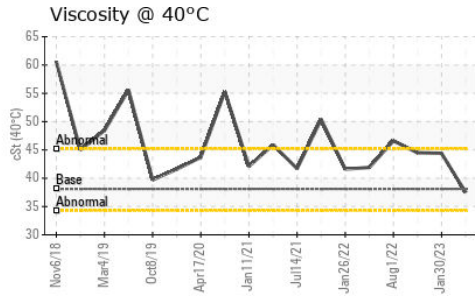
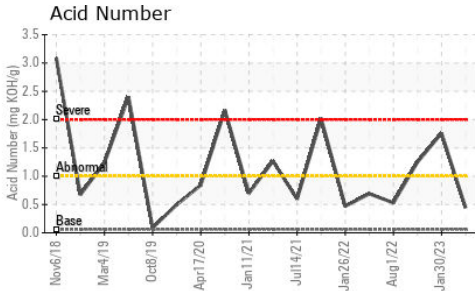
CONTAMINANTS

	method	limit/base	current	history1	history2
Silicon	ppm	ASTM D5185m >25	10	<1	1
Sodium	ppm	ASTM D5185m	0	61	96
Potassium	ppm	ASTM D5185m >20	<1	10	8

FLUID DEGRADATION

	method	limit/base	current	history1	history2
Acid Number (AN)	mg KOH/g	ASTM D8045 .06	0.441	● 1.76	▲ 1.25

OIL ANALYSIS REPORT



VISUAL	method	limit/base	current	history1	history2
White Metal	scalar	*Visual	NONE	NONE	NONE
Yellow Metal	scalar	*Visual	NONE	NONE	NONE
Precipitate	scalar	*Visual	NONE	NONE	NONE
Silt	scalar	*Visual	NONE	NONE	NONE
Debris	scalar	*Visual	NONE	NONE	NONE
Sand/Dirt	scalar	*Visual	NONE	NONE	NONE
Appearance	scalar	*Visual	NORML	NORML	NORML
Odor	scalar	*Visual	NORML	NORML	NORML
Emulsified Water	scalar	*Visual	>0.1	NEG	NEG
Free Water	scalar	*Visual		NEG	NEG

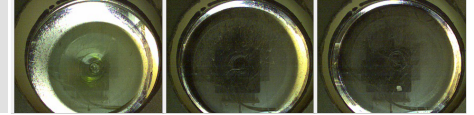
FLUID PROPERTIES	method	limit/base	current	history1	history2
Visc @ 40°C	cSt	ASTM D445	38.1	37.5	44.4

SAMPLE IMAGES	method	limit/base	current	history1	history2
---------------	--------	------------	---------	----------	----------

Color

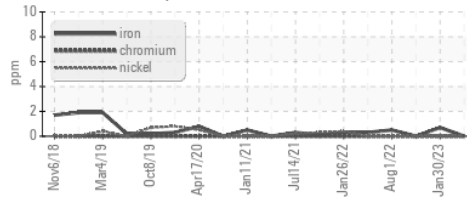


Bottom

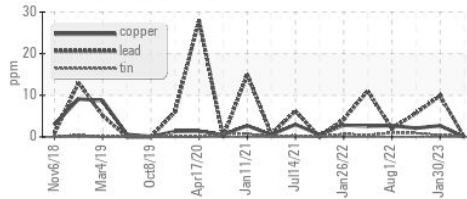


GRAPHS

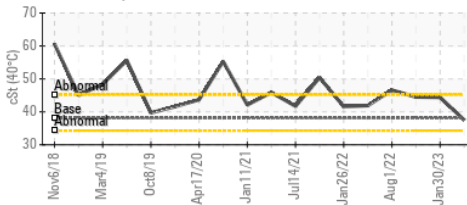
Ferrous Alloys



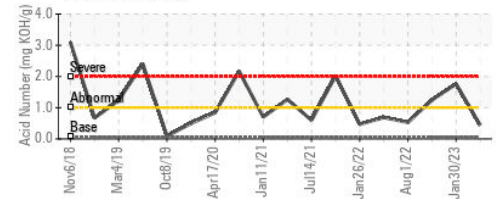
Non-ferrous Metals



Viscosity @ 40°C



Acid Number



Certificate L2367

Laboratory : WearCheck USA - 501 Madison Ave., Cary, NC 27513

Sample No. : UCH05814001

Lab Number : 05814001

Unique Number : 10416793

Test Package : IND 2

Received : 07 Apr 2023

Tested : 11 Apr 2023

Diagnosed : 12 Apr 2023 - Don Baldrige

JOHN HENRY FOSTER COMPANY

4700 LEBOURGET STREET

SAINT LOUIS, MO

US 63134

Contact: RACHEL VON HATTEN

rvonhatten@jhfc.com

T: (314)593-1267

F: (314)874-0965

To discuss this sample report, contact Customer Service at 1-800-237-1369.

* - Denotes test methods that are outside of the ISO 17025 scope of accreditation.

Statements of conformity to specifications are based on the simple acceptance decision rule (JCGM 106:2012)