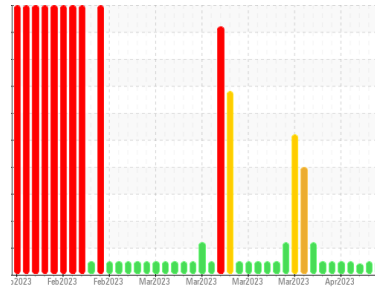




COOLANT REPORT

Sample Rating Trend



NORMAL



Area
WCLSNC
 Machine Id
QC COOL ELC NC 09012022
 Component
Coolant
 Fluid
CAT EXTENDED LIFE COOLANT (ELC) (--- GAL)

DIAGNOSIS

SAMPLE INFORMATION		method	limit/base	current	history1	history2
Sample Number	Client Info			WC0807702	WC0807701	WC0807700
Sample Date	Client Info			13 Apr 2023	12 Apr 2023	11 Apr 2023
Machine Age	hrs	Client Info		0	0	0
Oil Age	hrs	Client Info		0	0	0
Oil Changed	Client Info			N/A	N/A	N/A
Sample Status				NORMAL	NORMAL	ABNORMAL

PHYSICAL TEST RESULTS		method	limit/base	current	history1	history2
Specific Gravity		*ASTM D1298		1.067	1.067	1.067
pH	Scale 0-14	ASTM D1287		8.16	8.18	8.19
Nitrites	ppm	AP-053:2009		636	676	600
Reserve Alkalinity	Scale 0-20	*ASTM D1121		---	---	---
Percentage Glycol	%	ASTM D3321		50.0	49.8	50.0
Freezing Point	°F	ASTM D3321		-35	-33	-35
Total Dissolved Solids				349.0	324.5	326.0
Carboxylate				pass	pass	pass

CORROSION INHIBITORS		method	limit/base	current	history1	history2
Silicon	ppm	ASTM D6130	0	17	16	16
Phosphorus	ppm	ASTM D6130	0	0	0	0
Boron	ppm	ASTM D6130	0	12	13	▲ 13
Molybdenum	ppm	ASTM D6130	950	1055	1004	1045

CORROSION		method	limit/base	current	history1	history2
Iron	ppm	ASTM D6130	>2	2	<1	<1
Aluminum	ppm	ASTM D6130	>2	<1	<1	<1
Copper	ppm	ASTM D6130	>2	<1	<1	<1
Lead	ppm	ASTM D6130	>2	<1	<1	<1
Tin	ppm	ASTM D6130	>2	0	0	0
Zinc	ppm	ASTM D6130	>2	<1	0	0

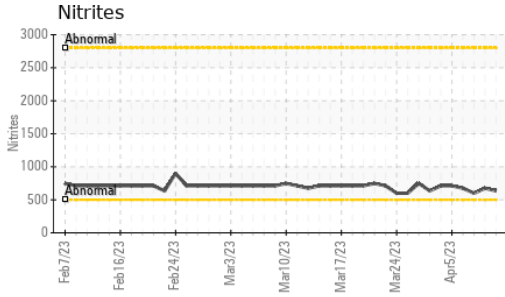
CONTAMINANTS		method	limit/base	current	history1	history2
Chlorine	ppm	ASTM D6130		20	19	16

CARRIER SALTS		method	limit/base	current	history1	history2
Sodium	ppm	ASTM D6130		5599	5203	5169
Potassium	ppm	ASTM D6130		17	15	17

SCALE POTENTIAL		method	limit/base	current	history1	history2
Calcium	ppm	ASTM D6130	>5	<1	<1	0
Magnesium	ppm	ASTM D6130	>6	0	0	0

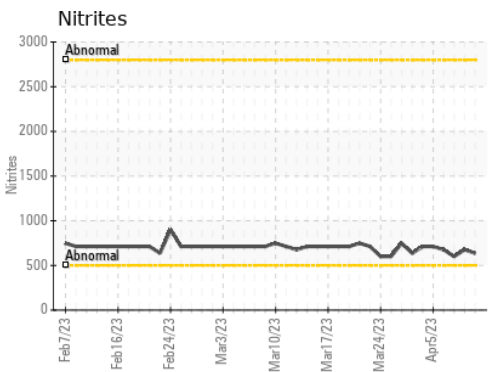
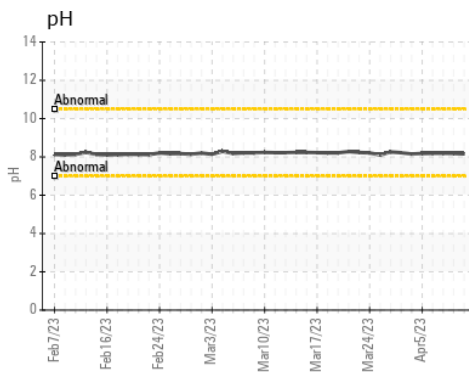
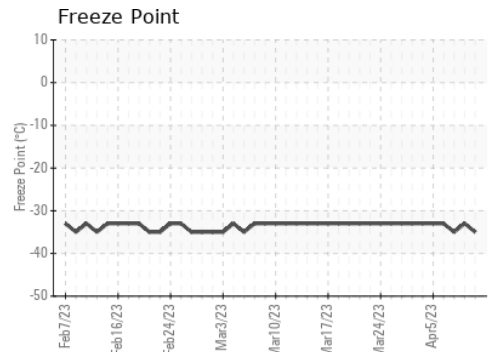
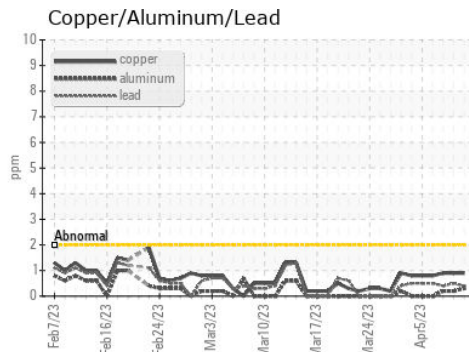
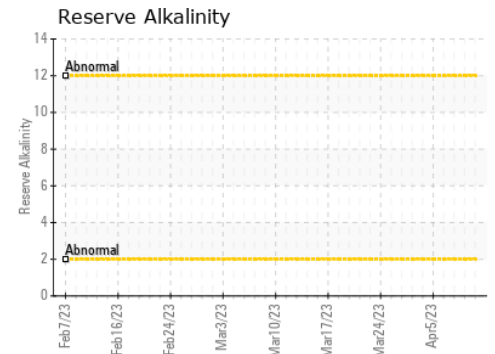
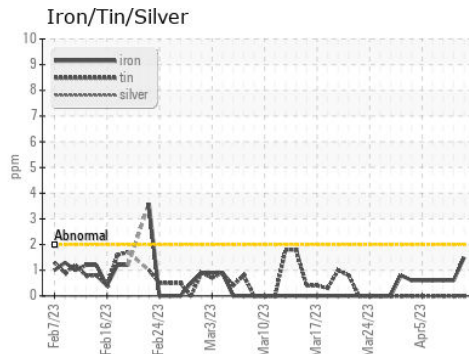


COOLANT REPORT



VISUAL	method	limit/base	current	history1	history2
Coolant Color	*Visual		Red	Red	Red
Coolant Appearance	*Visual	Clear	normal	normal	normal
Color					
Bottom					

GRAPHS



Certificate L2367

Laboratory : WearCheck USA - 501 Madison Ave., Cary, NC 27513
 Sample No. : WC0807702 Received : 13 Apr 2023
 Lab Number : 05819314 Diagnosed : 02 Oct 2023
 Unique Number : 10427397 Diagnostician : System
 Test Package : COOL- (Additional Tests: COOL, ICP)

WEARCHECK LUBRICATION SERVICES QA ACCOUNT
 501 Madison Ave
 Cary, NC
 US 27513
 Contact: WCLS CARY NC

To discuss this sample report, contact Customer Service at 1-800-237-1369.

* - Denotes test methods that are outside of the ISO 17025 scope of accreditation.

Statements of conformity to specifications are based on the simple acceptance decision rule (JCGM 106:2012)

T: (919)379-4102

F: (919)379-4050