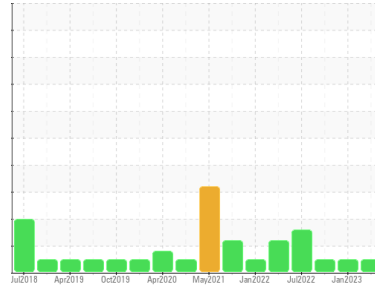


OIL ANALYSIS REPORT

Area
DIAMOND BLUE
Machine Id
SULLAIR 31177AGG - DOE RUN
Component
Compressor

Sample Rating Trend



NORMAL



DIAGNOSIS

Recommendation

Resample at the next service interval to monitor.

Wear

All component wear rates are normal.

Contamination

There is no indication of any contamination in the component.

Fluid Condition

The AN level is acceptable for this fluid. The condition of the oil is suitable for further service.

SAMPLE INFORMATION

	method	limit/base	current	history1	history2
Sample Number	Client Info		UCH05826406	UCH05758337	UCH05685205
Sample Date	Client Info		12 Apr 2023	09 Jan 2023	24 Oct 2022
Machine Age	hrs	Client Info	59770	57569	55800
Oil Age	hrs	Client Info	2000	8080	6000
Oil Changed	Client Info		Not Changed	Changed	Not Changed
Sample Status			NORMAL	NORMAL	NORMAL

CONTAMINATION

	method	limit/base	current	history1	history2
Water	WC Method	>0.1	NEG	NEG	NEG

WEAR METALS

	method	limit/base	current	history1	history2
Iron	ppm	ASTM D5185m >50	<1	<1	2
Chromium	ppm	ASTM D5185m >10	0	0	0
Nickel	ppm	ASTM D5185m	0	0	0
Titanium	ppm	ASTM D5185m	0	0	0
Silver	ppm	ASTM D5185m	0	0	0
Aluminum	ppm	ASTM D5185m >25	<1	0	<1
Lead	ppm	ASTM D5185m >25	18	6	9
Copper	ppm	ASTM D5185m >50	<1	<1	<1
Tin	ppm	ASTM D5185m >15	<1	<1	<1
Vanadium	ppm	ASTM D5185m	0	0	0
Cadmium	ppm	ASTM D5185m	0	<1	<1

ADDITIVES

	method	limit/base	current	history1	history2
Boron	ppm	ASTM D5185m	0	0	0
Barium	ppm	ASTM D5185m 745	696	792	474
Molybdenum	ppm	ASTM D5185m 0.0	0	0	0
Manganese	ppm	ASTM D5185m	<1	0	<1
Magnesium	ppm	ASTM D5185m 0.0	7	<1	0
Calcium	ppm	ASTM D5185m 1	7	4	4
Phosphorus	ppm	ASTM D5185m 3	13	10	21
Zinc	ppm	ASTM D5185m 0.1	0	2	3
Sulfur	ppm	ASTM D5185m 240	164	366	545

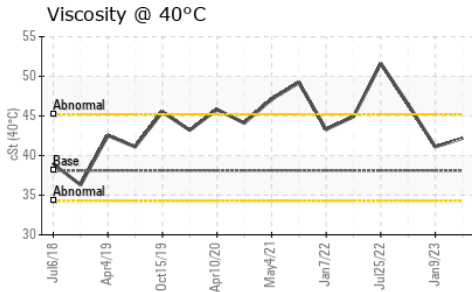
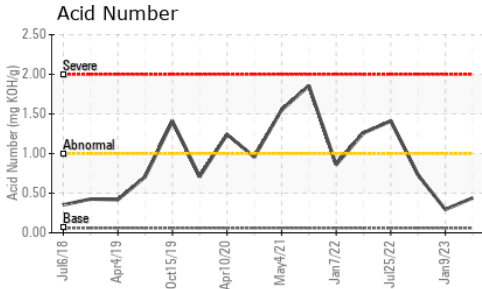
CONTAMINANTS

	method	limit/base	current	history1	history2
Silicon	ppm	ASTM D5185m >25	2	6	3
Sodium	ppm	ASTM D5185m	42	27	64
Potassium	ppm	ASTM D5185m >20	4	3	6

FLUID DEGRADATION

	method	limit/base	current	history1	history2
Acid Number (AN)	mg KOH/g	ASTM D8045 .06	0.44	0.294	0.73

OIL ANALYSIS REPORT

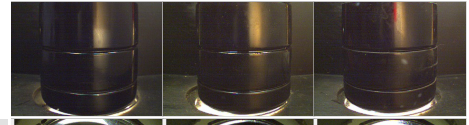


VISUAL	method	limit/base	current	history1	history2
White Metal	scalar	*Visual	NONE	NONE	NONE
Yellow Metal	scalar	*Visual	NONE	NONE	NONE
Precipitate	scalar	*Visual	NONE	NONE	NONE
Silt	scalar	*Visual	NONE	NONE	NONE
Debris	scalar	*Visual	NONE	LIGHT	LIGHT
Sand/Dirt	scalar	*Visual	NONE	NONE	NONE
Appearance	scalar	*Visual	NORML	NORML	NORML
Odor	scalar	*Visual	NORML	NORML	NORML
Emulsified Water	scalar	*Visual	>0.1	NEG	NEG
Free Water	scalar	*Visual		NEG	NEG

FLUID PROPERTIES	method	limit/base	current	history1	history2	
Visc @ 40°C	cSt	ASTM D445	38.1	42.2	41.1	46.5

SAMPLE IMAGES	method	limit/base	current	history1	history2
---------------	--------	------------	---------	----------	----------

Color

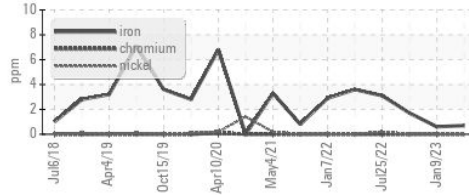


Bottom

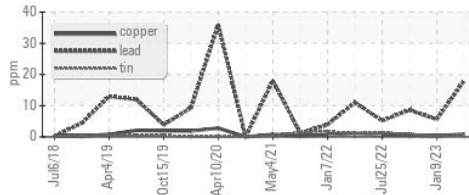


GRAPHS

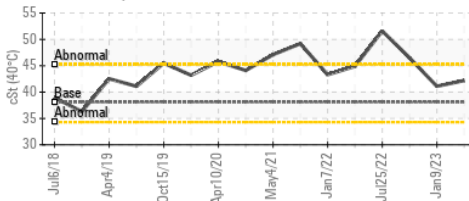
Ferrous Alloys



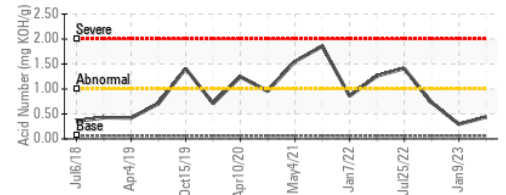
Non-ferrous Metals



Viscosity @ 40°C



Acid Number



Certificate L2367

Laboratory : WearCheck USA - 501 Madison Ave., Cary, NC 27513

Sample No. : UCH05826406

Lab Number : 05826406

Unique Number : 10439899

Test Package : IND 2

Received : 21 Apr 2023

Tested : 24 Apr 2023

Diagnosed : 25 Apr 2023 - Don Baldrige

JOHN HENRY FOSTER COMPANY

4700 LEBOURGET STREET

SAINT LOUIS, MO

US 63134

Contact: RACHEL VON HATTEN

rvonhatten@jhfc.com

T: (314)593-1267

F: (314)874-0965

To discuss this sample report, contact Customer Service at 1-800-237-1369.

* - Denotes test methods that are outside of the ISO 17025 scope of accreditation.

Statements of conformity to specifications are based on the simple acceptance decision rule (JCGM 106:2012)