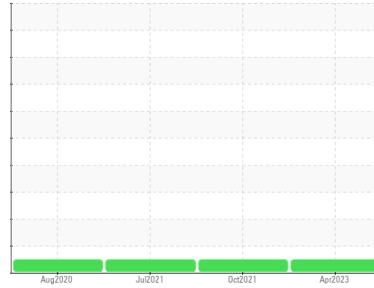




# OIL ANALYSIS REPORT

Sample Rating Trend

**NORMAL**



Machine Id  
**1250 (S/N S0024968)**

Component  
**Compressor**  
Fluid  
**ALMIG (--- GAL)**

## DIAGNOSIS

### Recommendation

Resample at the next service interval to monitor.

### Wear

All component wear rates are normal.

### Contamination

There is no indication of any contamination in the oil.

### Fluid Condition

The AN level is acceptable for this fluid. The condition of the oil is acceptable for the time in service.

| SAMPLE INFORMATION |             | method      | limit/base | current            | history1    | history2    |
|--------------------|-------------|-------------|------------|--------------------|-------------|-------------|
| Sample Number      | Client Info |             |            | <b>WC0714750</b>   | WC0628087   | WC0574586   |
| Sample Date        | Client Info |             |            | <b>24 Apr 2023</b> | 29 Oct 2021 | 24 Jul 2021 |
| Machine Age        | hrs         | Client Info |            | <b>7385</b>        | 4220        | 2636        |
| Oil Age            | hrs         | Client Info |            | <b>5963</b>        | 0           | 0           |
| Oil Changed        | Client Info |             |            | <b>Not Chngd</b>   | Not Chngd   | Not Chngd   |
| Sample Status      |             |             |            | <b>NORMAL</b>      | NORMAL      | NORMAL      |

| WEAR METALS |     | method      | limit/base | current    | history1 | history2 |
|-------------|-----|-------------|------------|------------|----------|----------|
| Iron        | ppm | ASTM D5185m | >50        | <b>0</b>   | 2        | <1       |
| Chromium    | ppm | ASTM D5185m | >10        | <b>0</b>   | 0        | 0        |
| Nickel      | ppm | ASTM D5185m |            | <b>0</b>   | 1        | <1       |
| Titanium    | ppm | ASTM D5185m |            | <b>0</b>   | 0        | 0        |
| Silver      | ppm | ASTM D5185m |            | <b>0</b>   | <1       | 0        |
| Aluminum    | ppm | ASTM D5185m | >25        | <b>1</b>   | 1        | <1       |
| Lead        | ppm | ASTM D5185m | >25        | <b>0</b>   | <1       | 0        |
| Copper      | ppm | ASTM D5185m | >50        | <b>2</b>   | 10       | 6        |
| Tin         | ppm | ASTM D5185m | >15        | <b>0</b>   | 0        | 0        |
| Antimony    | ppm | ASTM D5185m |            | <b>---</b> | 0        | 0        |
| Vanadium    | ppm | ASTM D5185m |            | <b>0</b>   | 0        | 0        |
| Cadmium     | ppm | ASTM D5185m |            | <b>0</b>   | 0        | 0        |

| ADDITIVES  |     | method      | limit/base | current      | history1 | history2 |
|------------|-----|-------------|------------|--------------|----------|----------|
| Boron      | ppm | ASTM D5185m |            | <b>0</b>     | <1       | 0        |
| Barium     | ppm | ASTM D5185m |            | <b>0</b>     | 1        | 0        |
| Molybdenum | ppm | ASTM D5185m |            | <b>0</b>     | 0        | 0        |
| Manganese  | ppm | ASTM D5185m |            | <b>&lt;1</b> | <1       | <1       |
| Magnesium  | ppm | ASTM D5185m |            | <b>0</b>     | 1        | 0        |
| Calcium    | ppm | ASTM D5185m |            | <b>0</b>     | 2        | 0        |
| Phosphorus | ppm | ASTM D5185m |            | <b>363</b>   | 347      | 300      |
| Zinc       | ppm | ASTM D5185m |            | <b>114</b>   | 172      | 102      |
| Sulfur     | ppm | ASTM D5185m |            | <b>0</b>     | 95       | 51       |

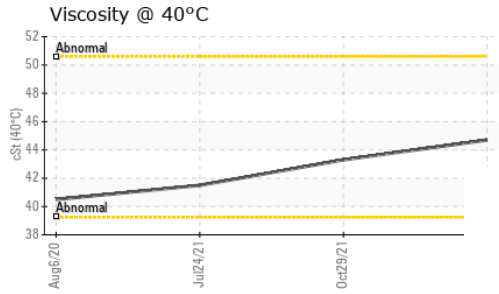
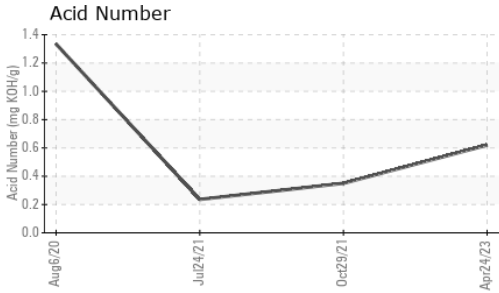
| CONTAMINANTS |     | method      | limit/base | current  | history1 | history2 |
|--------------|-----|-------------|------------|----------|----------|----------|
| Silicon      | ppm | ASTM D5185m | >25        | <b>0</b> | 1        | 0        |
| Sodium       | ppm | ASTM D5185m |            | <b>2</b> | 0        | <1       |
| Potassium    | ppm | ASTM D5185m | >20        | <b>0</b> | <1       | <1       |

| FLUID DEGRADATION |          | method     | limit/base | current     | history1 | history2 |
|-------------------|----------|------------|------------|-------------|----------|----------|
| Acid Number (AN)  | mg KOH/g | ASTM D8045 |            | <b>0.62</b> | 0.350    | 0.236    |

| VISUAL           |        | method  | limit/base | current      | history1 | history2 |
|------------------|--------|---------|------------|--------------|----------|----------|
| White Metal      | scalar | *Visual | NONE       | <b>NONE</b>  | LIGHT    | LIGHT    |
| Yellow Metal     | scalar | *Visual | NONE       | <b>NONE</b>  | NONE     | NONE     |
| Precipitate      | scalar | *Visual | NONE       | <b>NONE</b>  | NONE     | NONE     |
| Silt             | scalar | *Visual | NONE       | <b>NONE</b>  | NONE     | NONE     |
| Debris           | scalar | *Visual | NONE       | <b>NONE</b>  | NONE     | VLITE    |
| Sand/Dirt        | scalar | *Visual | NONE       | <b>NONE</b>  | NONE     | NONE     |
| Appearance       | scalar | *Visual | NORML      | <b>NORML</b> | NORML    | NORML    |
| Odor             | scalar | *Visual | NORML      | <b>NORML</b> | NORML    | NORML    |
| Emulsified Water | scalar | *Visual | >0.1       | <b>NEG</b>   | NEG      | NEG      |
| Free Water       | scalar | *Visual |            | <b>NEG</b>   | NEG      | NEG      |



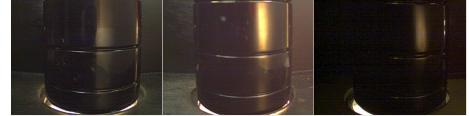
# OIL ANALYSIS REPORT



| FLUID PROPERTIES | method | limit/base | current     | history1 | history2 |
|------------------|--------|------------|-------------|----------|----------|
| Visc @ 40°C      | cSt    | ASTM D445  | <b>44.7</b> | 43.3     | 41.5     |

| SAMPLE IMAGES | method | limit/base | current | history1 | history2 |
|---------------|--------|------------|---------|----------|----------|
|---------------|--------|------------|---------|----------|----------|

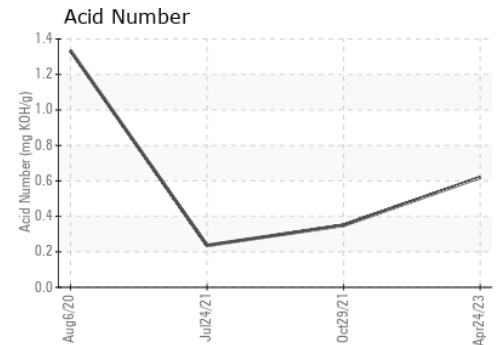
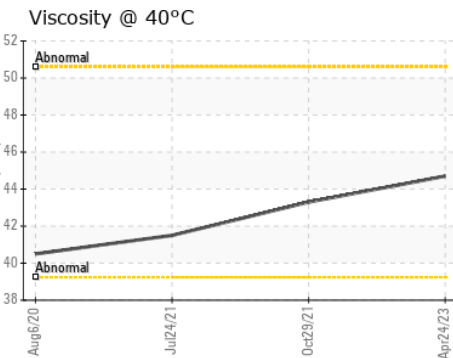
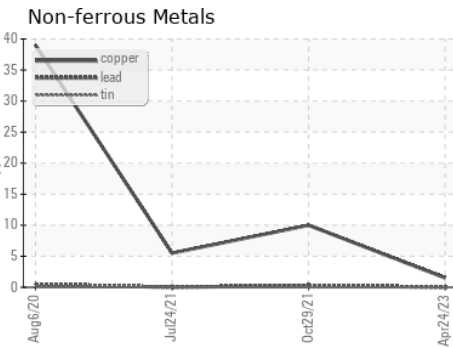
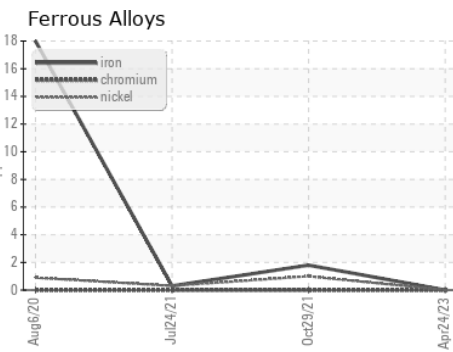
Color



Bottom



## GRAPHS



Certificate L2367

**Laboratory** : WearCheck USA - 501 Madison Ave., Cary, NC 27513  
**Sample No.** : WC0714750 **Received** : 01 May 2023  
**Lab Number** : 05834008 **Diagnosed** : 02 May 2023  
**Unique Number** : 10452811 **Diagnostician** : Angela Borella  
**Test Package** : PLANT

**SUEZ WTS**  
 5951 CLEARWATER DR  
 MINNETONKA, MN  
 US 55343  
 Contact: Service Manager

To discuss this sample report, contact Customer Service at 1-800-237-1369.

\* - Denotes test methods that are outside of the ISO 17025 scope of accreditation.

Statements of conformity to specifications are based on the simple acceptance decision rule (JCGM 106:2012)

T:  
F: