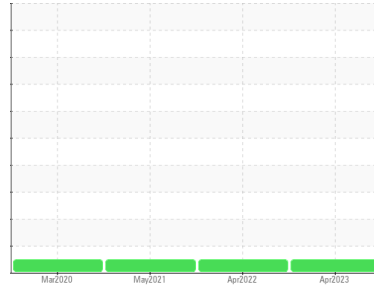




FUEL REPORT

Sample Rating Trend

NORMAL



Area
[W103952]
 Machine Id
IVECO J600-0711650

Component
Diesel Fuel
 Fluid
No.2 DIESEL FUEL (ULTRALOW SULPHUR) (--- GAL)

DIAGNOSIS

Recommendation

All laboratory tests indicate that this sample meets specifications for No.2 ultra-low-sulfur diesel fuel.

Corrosion

All metal levels are normal indicating no corrosion in the system.

Contaminants

There is no Bacteria, Yeast and/or Fungus indicated in the sample. The water content is negligible. There is no indication of any contamination in the fuel.

Fuel Condition

Sulfur value derived by ASTM D5453 method for ULSD validation. Sulfur level is acceptable for ULSD specification.

SAMPLE INFORMATION		method	limit/base	current	history1	history2
Sample Number	Client Info			WC0663293	WCDF04165	WCDF03774
Sample Date	Client Info			13 Apr 2023	19 Apr 2022	04 May 2021
Machine Age	hrs	Client Info		0	0	0
Sample Status				NORMAL	NORMAL	NORMAL

PHYSICAL PROPERTIES		method	limit/base	current	history1	history2
ASTM Color	scalar	*ASTM D1500		L4.0	L4.5	L4.0
Visc @ 40°C	cSt	ASTM D445	3.0	2.46	2.50	2.52

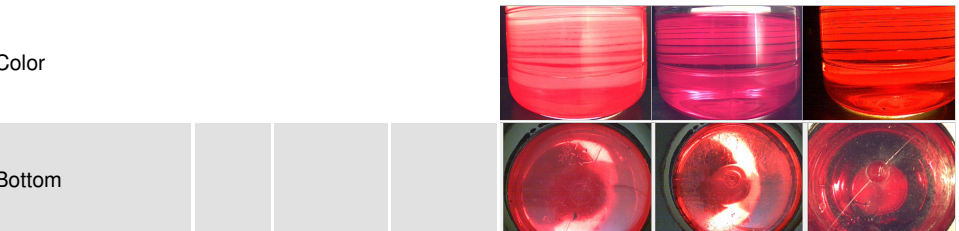
SULFUR CONTENT		method	limit/base	current	history1	history2
Sulfur	ppm	ASTM D5185m	10	0	0	5
Sulfur (UVF)	ppm	ASTM D5453		9	11	10

CONTAMINANTS		method	limit/base	current	history1	history2
Silicon	ppm	ASTM D5185m	<1.0	0	0	0
Sodium	ppm	ASTM D5185m	<0.1	0	0	0
Potassium	ppm	ASTM D5185m	<0.1	0	0	0
Water	%	ASTM D6304	<0.05	0.004	0.003	0.004
ppm Water	ppm	ASTM D6304	<500	45.3	37.9	48.1
% Gasoline	%	*In-House	<0.50	0.0	0.0	0.0
% Biodiesel	%	*In-House	<20.0	1.1	0.0	1.2

FLUID CLEANLINESS		method	limit/base	current	history1	history2
Particles >4µm		ASTM D7647	>2500	34583	1608	---
Particles >6µm		ASTM D7647	>640	11845	544	---
Particles >14µm		ASTM D7647	>80	1073	38	---
Particles >21µm		ASTM D7647	>20	284	8	---
Particles >38µm		ASTM D7647	>4	16	0	---
Particles >71µm		ASTM D7647	>3	0	0	---
Oil Cleanliness		ISO 4406 (c)	>18/16/13	22/21/17	18/16/12	---

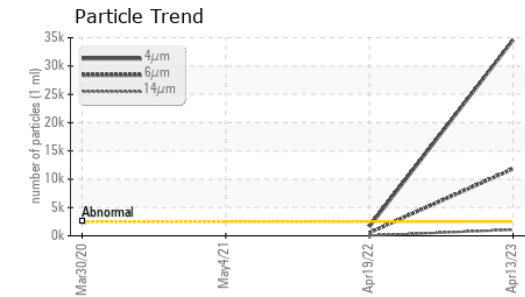
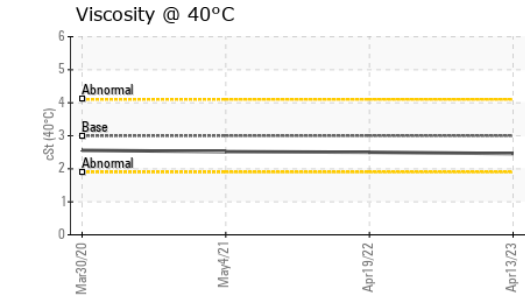
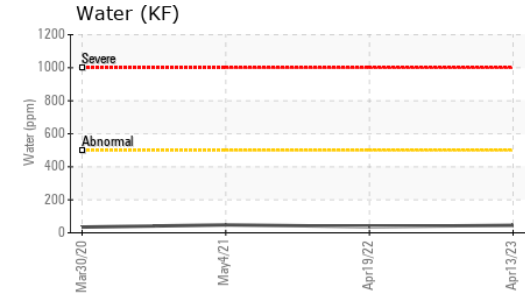
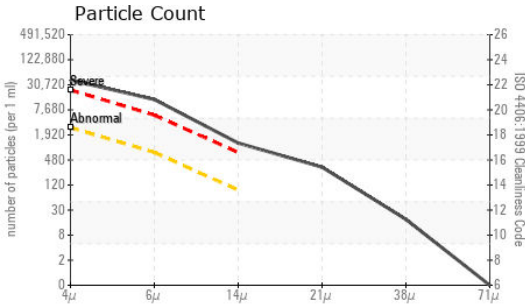
HEAVY METALS		method	limit/base	current	history1	history2
Aluminum	ppm	ASTM D5185m	<0.1	0	0	<1
Nickel	ppm	ASTM D5185m	<0.1	0	0	0
Lead	ppm	ASTM D5185m	<0.1	0	0	0
Vanadium	ppm	ASTM D5185m	<0.1	0	0	0
Iron	ppm	ASTM D5185m	<0.1	0	0	0
Calcium	ppm	ASTM D5185m	<0.1	0	0	0
Magnesium	ppm	ASTM D5185m	<0.1	0	0	<1
Phosphorus	ppm	ASTM D5185m	<0.1	0	0	0
Zinc	ppm	ASTM D5185m	<0.1	0	0	<1

SAMPLE IMAGES		method	limit/base	current	history1	history2
---------------	--	--------	------------	---------	----------	----------

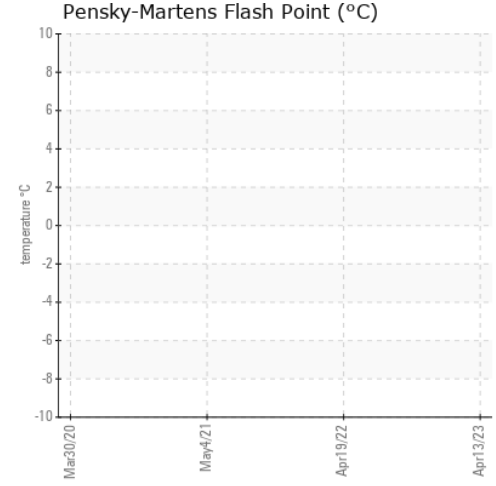




FUEL REPORT



GRAPHS



Certificate L2367

Laboratory : WearCheck USA - 501 Madison Ave., Cary, NC 27513
Sample No. : WC0663293 **Received** : 01 May 2023
Lab Number : **05834343** **Diagnosed** : 12 May 2023
Unique Number : 10453146 **Diagnostician** : Doug Bogart
Test Package : DF-5 (Additional Tests: Screen)

To discuss this sample report, contact Customer Service at 1-800-237-1369.

* - Denotes test methods that are outside of the ISO 17025 scope of accreditation.

Statements of conformity to specifications are based on the simple acceptance decision rule (JCGM 106:2012)

NATIONAL POWER CORP
 4541 PRESLYN DR
 RALEIGH, NC
 US 27616
 Contact: BRANDON RICE
 brandon.rice@natpow.com
 T:
 F: (919)790-9714