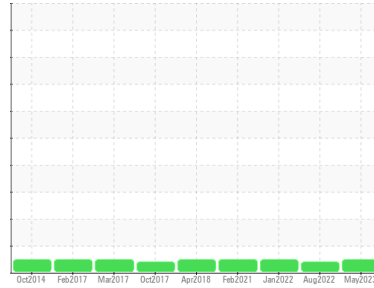




# OIL ANALYSIS REPORT

Sample Rating Trend

**NORMAL**



Machine Id  
**03Y609**

Component  
**Gearbox**

Fluid  
**ROYAL PURPLE SYNFILM 100 (--- GAL)**

## DIAGNOSIS

### Recommendation

Resample at the next service interval to monitor.

### Wear

All component wear rates are normal.

### Contamination

There is no indication of any contamination in the oil.

### Fluid Condition

The AN level is acceptable for this fluid. The condition of the oil is suitable for further service.

## SAMPLE INFORMATION

	method	limit/base	current	history1	history2
Sample Number	Client Info		<b>RP0027703</b>	RP0021420	RP0018330
Sample Date	Client Info		<b>11 May 2023</b>	08 Aug 2022	18 Jan 2022
Machine Age	hrs	Client Info	<b>0</b>	0	0
Oil Age	hrs	Client Info	<b>0</b>	0	0
Oil Changed	Client Info		<b>N/A</b>	N/A	N/A
Sample Status			<b>NORMAL</b>	ABNORMAL	NORMAL

## WEAR METALS

	method	limit/base	current	history1	history2
Iron	ppm	ASTM D5185m >200	<b>25</b>	18	13
Chromium	ppm	ASTM D5185m >15	<b>&lt;1</b>	0	<1
Nickel	ppm	ASTM D5185m >15	<b>&lt;1</b>	0	0
Titanium	ppm	ASTM D5185m	<b>0</b>	0	0
Silver	ppm	ASTM D5185m	<b>0</b>	0	0
Aluminum	ppm	ASTM D5185m >25	<b>2</b>	2	0
Lead	ppm	ASTM D5185m >100	<b>0</b>	<1	0
Copper	ppm	ASTM D5185m >200	<b>0</b>	<1	<1
Tin	ppm	ASTM D5185m >25	<b>0</b>	<1	0
Antimony	ppm	ASTM D5185m >5	<b>---</b>	---	0
Vanadium	ppm	ASTM D5185m	<b>0</b>	0	0
Cadmium	ppm	ASTM D5185m	<b>&lt;1</b>	0	0

## ADDITIVES

	method	limit/base	current	history1	history2
Boron	ppm	ASTM D5185m	<b>0</b>	0	<1
Barium	ppm	ASTM D5185m	<b>0</b>	<1	0
Molybdenum	ppm	ASTM D5185m	<b>0</b>	0	0
Manganese	ppm	ASTM D5185m	<b>&lt;1</b>	<1	<1
Magnesium	ppm	ASTM D5185m 90	<b>0</b>	<1	<1
Calcium	ppm	ASTM D5185m	<b>24</b>	177	169
Phosphorus	ppm	ASTM D5185m	<b>163</b>	8	16
Zinc	ppm	ASTM D5185m	<b>0</b>	1	0

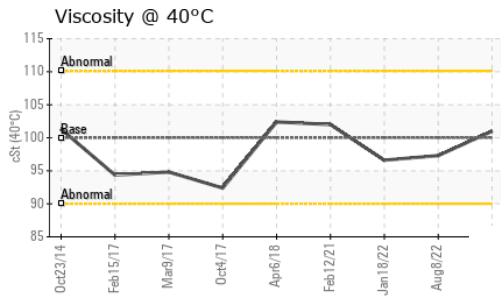
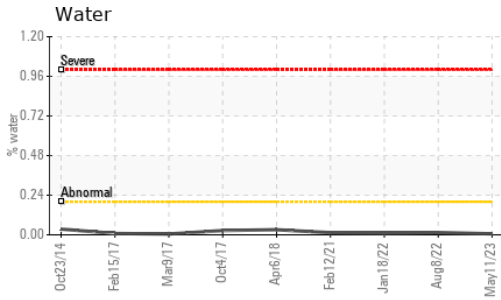
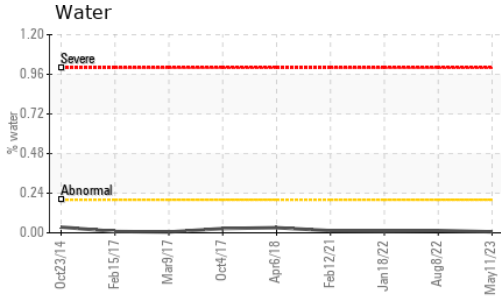
## CONTAMINANTS

	method	limit/base	current	history1	history2
Silicon	ppm	ASTM D5185m >50	<b>15</b>	<1	<1
Sodium	ppm	ASTM D5185m	<b>&lt;1</b>	0	0
Potassium	ppm	ASTM D5185m >20	<b>1</b>	<1	0
Water	%	ASTM D6304 >0.2	<b>0.006</b>	0.014	0.010
ppm Water	ppm	ASTM D6304 >2000	<b>61.8</b>	145.5	104.3

## FLUID DEGRADATION

	method	limit/base	current	history1	history2
Acid Number (AN)	mg KOH/g	ASTM D8045 0.25	<b>0.50</b>	0.30	0.271

# OIL ANALYSIS REPORT

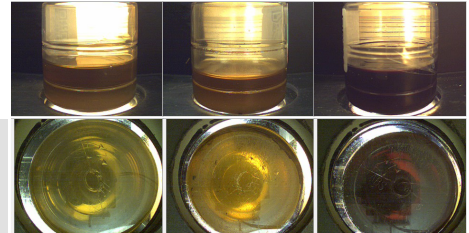


VISUAL	method	limit/base	current	history1	history2
White Metal	scalar	*Visual	NONE	NONE	NONE
Yellow Metal	scalar	*Visual	NONE	NONE	NONE
Precipitate	scalar	*Visual	NONE	NONE	NONE
Silt	scalar	*Visual	NONE	NONE	NONE
Debris	scalar	*Visual	NONE	NONE	NONE
Sand/Dirt	scalar	*Visual	NONE	NONE	NONE
Appearance	scalar	*Visual	NORML	NORML	NORML
Odor	scalar	*Visual	NORML	NORML	NORML
Emulsified Water	scalar	*Visual	>0.2	NEG	NEG
Free Water	scalar	*Visual		NEG	NEG

FLUID PROPERTIES	method	limit/base	current	history1	history2
Visc @ 40°C	cSt	ASTM D445	100	101	97.3

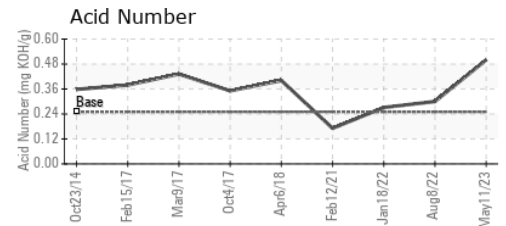
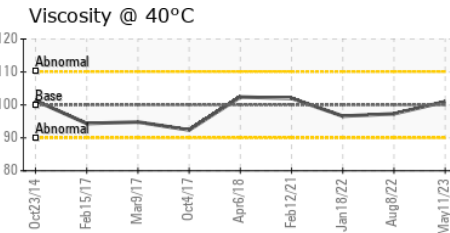
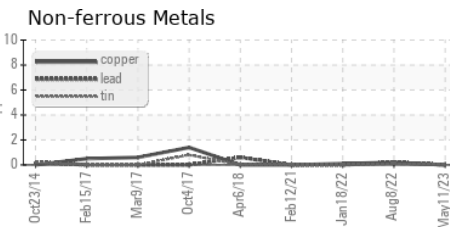
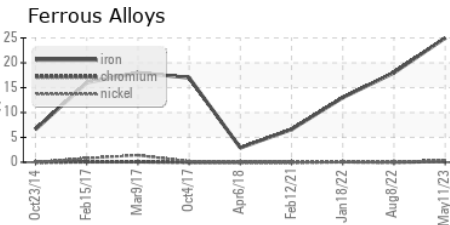
SAMPLE IMAGES	method	limit/base	current	history1	history2
---------------	--------	------------	---------	----------	----------

Color



Bottom

## GRAPHS



Certificate L2367

**Laboratory** : WearCheck USA - 501 Madison Ave., Cary, NC 27513  
**Sample No.** : RP0027703 **Received** : 12 May 2023  
**Lab Number** : 05846383 **Diagnosed** : 16 May 2023  
**Unique Number** : 10470490 **Diagnostician** : Don Baldrige  
**Test Package** : IND 2

To discuss this sample report, contact Customer Service at 1-800-237-1369.

\* - Denotes test methods that are outside of the ISO 17025 scope of accreditation.

Statements of conformity to specifications are based on the simple acceptance decision rule (JCGM 106:2012)

**SOLVAY**  
 1275 AIRLINE HWY  
 BATON ROUGE, LA  
 US 70805

Contact: MICHEAL ROJAS  
 micheal.rojas@solvay.com

T: (225)573-3664

F: x: