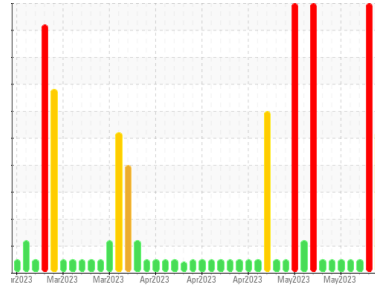




# COOLANT REPORT

Sample Rating Trend



COOL CHEMICALS



Area  
**WCLSNC**  
 Machine Id  
**QC COOL ELC NC 09012022**  
 Component  
**Coolant**  
 Fluid  
**CAT EXTENDED LIFE COOLANT (ELC) (--- GAL)**

## DIAGNOSIS

SAMPLE INFORMATION		method	limit/base	current	history1	history2
Sample Number	Client Info			<b>WC0817097</b>	WC0817096	WC0817094
Sample Date	Client Info			<b>19 May 2023</b>	18 May 2023	16 May 2023
Machine Age	hrs	Client Info		<b>0</b>	0	0
Oil Age	hrs	Client Info		<b>0</b>	0	0
Oil Changed	Client Info			<b>N/A</b>	N/A	N/A
Sample Status				<b>SEVERE</b>	SEVERE	NORMAL

PHYSICAL TEST RESULTS		method	limit/base	current	history1	history2
Specific Gravity		*ASTM D1298		<b>1.067</b>	1.067	1.067
pH	Scale 0-14	ASTM D1287		<b>8.14</b>	8.11	8.19
Nitrites	ppm	AP-053:2009		<b>636</b>	676	676
Reserve Alkalinity	Scale 0-20	*ASTM D1121		<b>---</b>	---	---
Percentage Glycol	%	ASTM D3321		<b>49.8</b>	50.0	49.8
Freezing Point	°F	ASTM D3321		<b>-33</b>	-35	-33
Total Dissolved Solids				<b>323.5</b>	341.0	324.5
Carboxylate				<b>pass</b>	pass	pass

CORROSION INHIBITORS		method	limit/base	current	history1	history2
Silicon	ppm	ASTM D6130	0	<b>21</b>	21	7
Phosphorus	ppm	ASTM D6130	0	<b>50</b>	52	0
Boron	ppm	ASTM D6130	0	<b>20</b>	22	0
Molybdenum	ppm	ASTM D6130	950	<b>1148</b>	1169	1144

CORROSION		method	limit/base	current	history1	history2
Iron	ppm	ASTM D6130	>2	<b>&lt;1</b>	0	0
Aluminum	ppm	ASTM D6130	>2	<b>2</b>	<1	0
Copper	ppm	ASTM D6130	>2	<b>1</b>	1	0
Lead	ppm	ASTM D6130	>2	<b>&lt;1</b>	<1	0
Tin	ppm	ASTM D6130	>2	<b>1</b>	1	0
Zinc	ppm	ASTM D6130	>2	<b>2</b>	<1	0

CONTAMINANTS		method	limit/base	current	history1	history2
Chlorine	ppm	ASTM D6130		<b>38</b>	39	<1

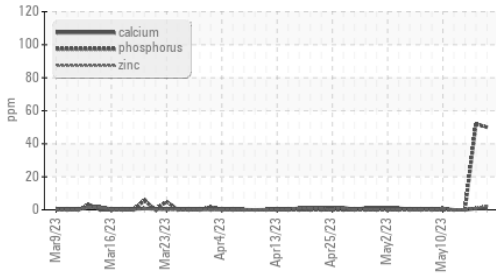
CARRIER SALTS		method	limit/base	current	history1	history2
Sodium	ppm	ASTM D6130		<b>5774</b>	5770	5708
Potassium	ppm	ASTM D6130		<b>51</b>	116	0

SCALE POTENTIAL		method	limit/base	current	history1	history2
Calcium	ppm	ASTM D6130	>5	<b>&lt;1</b>	<1	0
Magnesium	ppm	ASTM D6130	>6	<b>1</b>	1	0

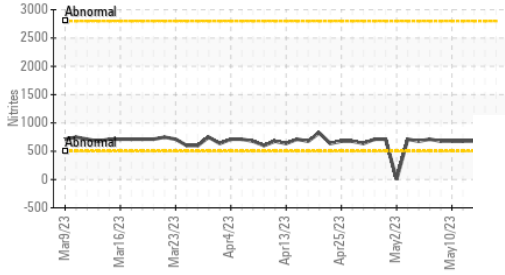


# COOLANT REPORT

## Additives



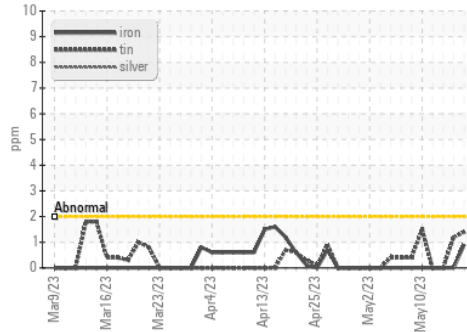
## Nitrites



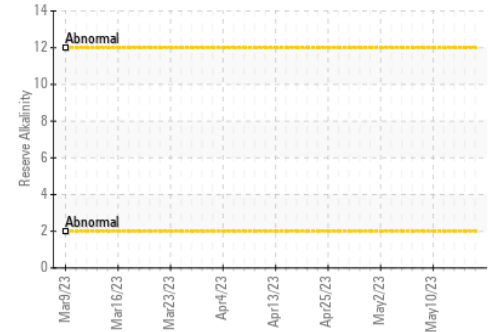
VISUAL	method	limit/base	current	history1	history2
Coolant Color	*Visual		Red	Red	Red
Coolant Appearance	*Visual	Clear	normal	normal	normal
Color					
Bottom					

## GRAPHS

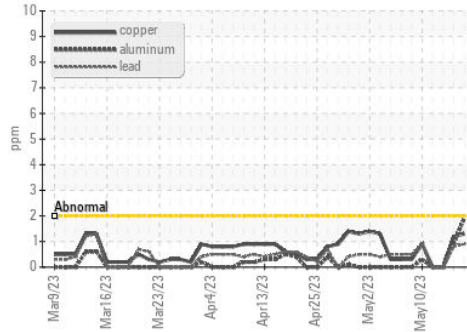
### Iron/Tin/Silver



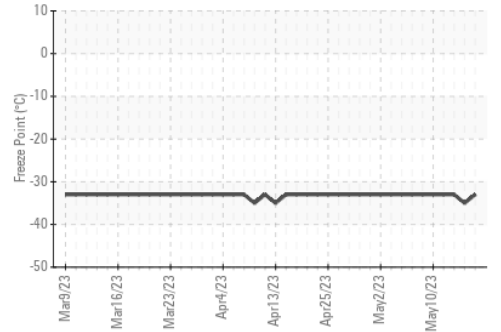
### Reserve Alkalinity



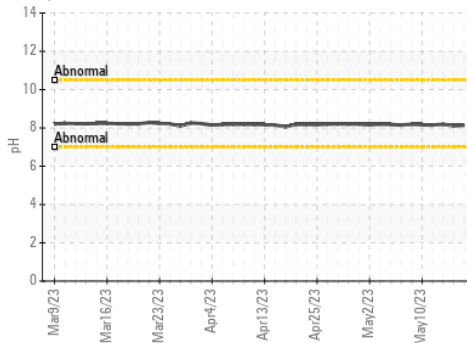
### Copper/Aluminum/Lead



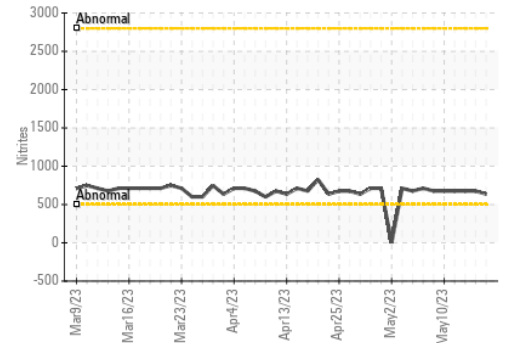
### Freeze Point



### pH



### Nitrites



Certificate L2367

Laboratory : WearCheck USA - 501 Madison Ave., Cary, NC 27513  
 Sample No. : WC0817097 Received : 19 May 2023  
 Lab Number : 05852733 Diagnosed : 02 Oct 2023  
 Unique Number : 10482088 Diagnostician : System  
 Test Package : COOL- ( Additional Tests: COOL, ICP )

WEARCHECK LUBRICATION SERVICES QA ACCOUNT  
 501 Madison Ave  
 Cary, NC  
 US 27513  
 Contact: WCLS CARY NC

To discuss this sample report, contact Customer Service at 1-800-237-1369.

\* - Denotes test methods that are outside of the ISO 17025 scope of accreditation.

Statements of conformity to specifications are based on the simple acceptance decision rule (JCGM 106:2012)

T: (919)379-4102

F: (919)379-4050