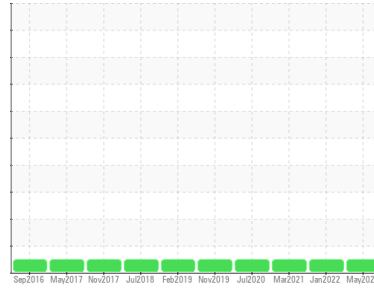




# OIL ANALYSIS REPORT

Sample Rating Trend

**NORMAL**



Area  
**9**  
 Machine Id  
**WTG-907**  
 Component  
**Hydraulic System**  
 Fluid  
**SHELL TELLUS 32 (300 LTR)**

## DIAGNOSIS

### Recommendation

Resample at the next service interval to monitor.

### Wear

All component wear rates are normal.

### Contamination

The amount and size of particulates present in the system are acceptable. There is no indication of any contamination in the oil.

### Fluid Condition

The AN level is acceptable for this fluid. The condition of the oil is suitable for further service.

## SAMPLE INFORMATION

	method	limit/base	current	history1	history2
Sample Number	Client Info		<b>WC0804533</b>	WC05504459	WC0547236
Sample Date	Client Info		<b>25 May 2023</b>	31 Jan 2022	10 Mar 2021
Machine Age	mths	Client Info	<b>0</b>	61	120
Oil Age	mths	Client Info	<b>0</b>	5	0
Oil Changed	Client Info		<b>Not Changed</b>	Not Changd	Not Changed
Sample Status			<b>NORMAL</b>	NORMAL	NORMAL

## WEAR METALS

	method	limit/base	current	history1	history2
PQ	ASTM D8184		<b>13</b>	16	---
Iron	ppm	ASTM D5185m >20	<b>3</b>	1	4
Chromium	ppm	ASTM D5185m >20	<b>8</b>	6	6
Nickel	ppm	ASTM D5185m >20	<b>0</b>	0	0
Titanium	ppm	ASTM D5185m	<b>0</b>	0	0
Silver	ppm	ASTM D5185m	<b>0</b>	<1	0
Aluminum	ppm	ASTM D5185m >20	<b>&lt;1</b>	0	0
Lead	ppm	ASTM D5185m >20	<b>0</b>	0	<1
Copper	ppm	ASTM D5185m >20	<b>1</b>	2	6
Tin	ppm	ASTM D5185m >20	<b>0</b>	0	<1
Antimony	ppm	ASTM D5185m	<b>---</b>	---	0
Vanadium	ppm	ASTM D5185m	<b>0</b>	0	0
Cadmium	ppm	ASTM D5185m	<b>0</b>	0	0

## ADDITIVES

	method	limit/base	current	history1	history2
Boron	ppm	ASTM D5185m	<b>0</b>	0	0
Barium	ppm	ASTM D5185m	<b>0</b>	0	0
Molybdenum	ppm	ASTM D5185m	<b>0</b>	0	<1
Manganese	ppm	ASTM D5185m	<b>&lt;1</b>	0	<1
Magnesium	ppm	ASTM D5185m 11	<b>30</b>	25	4
Calcium	ppm	ASTM D5185m 35	<b>18</b>	22	16
Phosphorus	ppm	ASTM D5185m 259	<b>281</b>	302	262
Zinc	ppm	ASTM D5185m 277	<b>307</b>	307	221
Sulfur	ppm	ASTM D5185m 1865	<b>2756</b>	2449	3491

## CONTAMINANTS

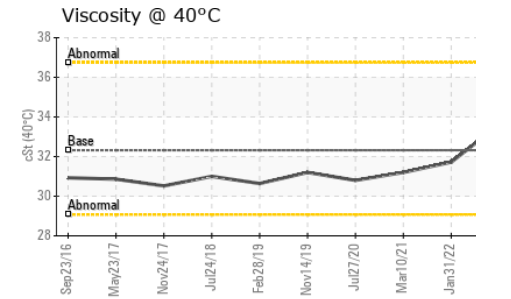
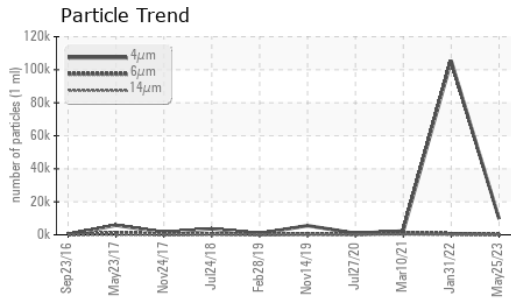
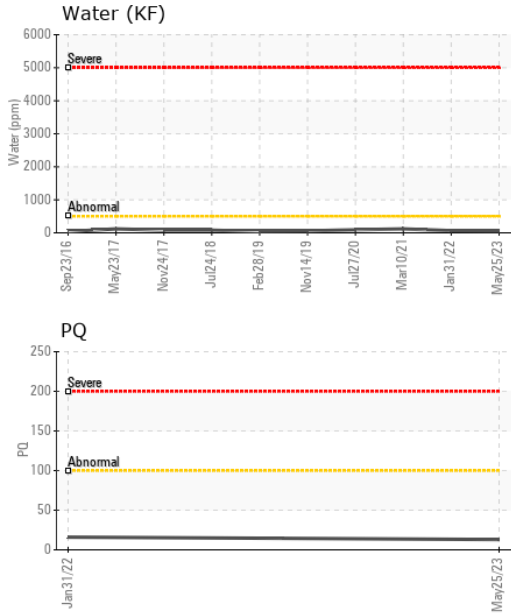
	method	limit/base	current	history1	history2
Silicon	ppm	ASTM D5185m >15	<b>0</b>	0	<1
Sodium	ppm	ASTM D5185m	<b>&lt;1</b>	0	0
Potassium	ppm	ASTM D5185m >20	<b>&lt;1</b>	0	0
Water	%	ASTM D6304 >0.05	<b>0.005</b>	0.006	0.011
ppm Water	ppm	ASTM D6304 >500	<b>55.4</b>	65.2	119.5

## FLUID CLEANLINESS

	method	limit/base	current	history1	history2
Particles >4µm	ASTM D7647		<b>9700</b>	105434	2329
Particles >6µm	ASTM D7647	>5000	<b>36</b>	672	1269
Particles >14µm	ASTM D7647	>640	<b>2</b>	26	216
Particles >21µm	ASTM D7647	>160	<b>1</b>	8	73
Particles >38µm	ASTM D7647	>40	<b>0</b>	0	11
Particles >71µm	ASTM D7647	>10	<b>0</b>	0	1
Oil Cleanliness	ISO 4406 (c)	>--/19/16	<b>20/12/9</b>	24/17/12	18/17/15



# OIL ANALYSIS REPORT

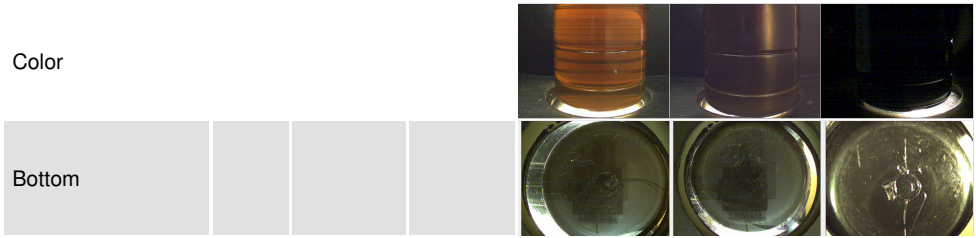


FLUID DEGRADATION		method	limit/base	current	history1	history2
Acid Number (AN)	mg KOH/g	ASTM D8045	0.32	<b>0.26</b>	0.29	0.289

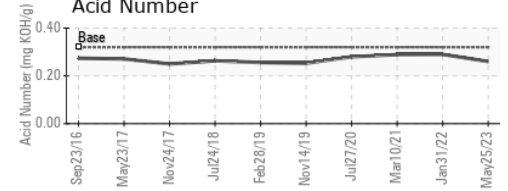
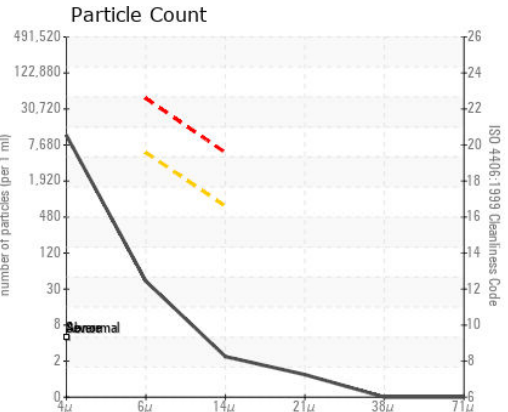
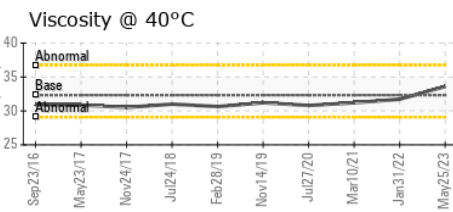
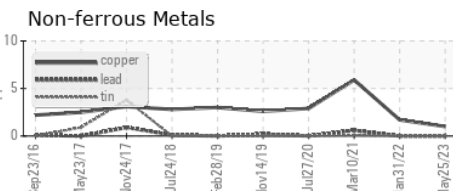
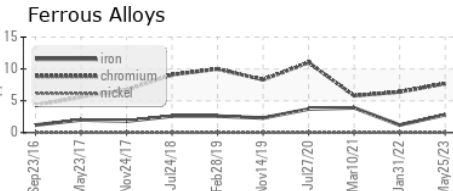
VISUAL		method	limit/base	current	history1	history2
White Metal	scalar	*Visual	NONE	<b>NONE</b>	NONE	NONE
Yellow Metal	scalar	*Visual	NONE	<b>NONE</b>	NONE	NONE
Precipitate	scalar	*Visual	NONE	<b>NONE</b>	NONE	NONE
Silt	scalar	*Visual	NONE	<b>NONE</b>	NONE	NONE
Debris	scalar	*Visual	NONE	<b>NONE</b>	NONE	LIGHT
Sand/Dirt	scalar	*Visual	NONE	<b>NONE</b>	NONE	NONE
Appearance	scalar	*Visual	NORML	<b>NORML</b>	NORML	NORML
Odor	scalar	*Visual	NORML	<b>NORML</b>	NORML	NORML
Emulsified Water	scalar	*Visual	>0.05	<b>NEG</b>	NEG	NEG
Free Water	scalar	*Visual		<b>NEG</b>	NEG	NEG

FLUID PROPERTIES		method	limit/base	current	history1	history2
Visc @ 40°C	cSt	ASTM D445	32.32	<b>33.6</b>	31.72	31.2

SAMPLE IMAGES		method	limit/base	current	history1	history2
---------------	--	--------	------------	---------	----------	----------



## GRAPHS



**Laboratory** : WearCheck USA - 501 Madison Ave., Cary, NC 27513  
**Sample No.** : WC0804533 **Received** : 26 May 2023  
**Lab Number** : 05857895 **Diagnosed** : 30 May 2023  
**Unique Number** : 10492360 **Diagnostician** : Jonathan Hester  
**Test Package** : IND 2 ( Additional Tests: KF, PQ )

**ENERGIA EOLICA**  
 STA ANA KM25 CARRETERA AL SUR, A 1KM DEL CRUCE  
 FRANCISCO MORAZAN, ZZ  
 HN  
 Contact: SANTOS DEL CID  
 sdelcid@dennci.com

Certificate L2367  
 To discuss this sample report, contact Customer Service at 1-800-237-1369.  
 \* - Denotes test methods that are outside of the ISO 17025 scope of accreditation.  
 Statements of conformity to specifications are based on the simple acceptance decision rule (JCGM 106:2012)

T: x:  
 F: x: