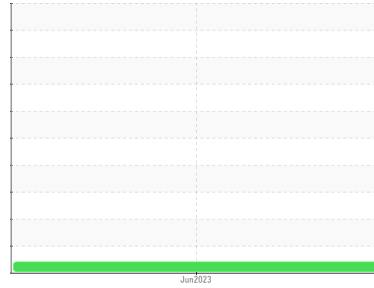




PROBLEM SUMMARY

Sample Rating Trend



VIS DEBRIS



Machine Id
72-PC-23 (S/N 60B)
 Component
Hydraulic System
 Fluid
Skydrol (--- LTR)

COMPONENT CONDITION SUMMARY

No relevant graphs to display

RECOMMENDATION

We recommend you service the filters on this component. Resample at the next service interval to monitor. We were unable to perform a particle count due to a high concentration of particles present in this sample.

PROBLEMATIC TEST RESULTS

Sample Status				ABNORMAL	---	---
Debris	scalar	*Visual	NONE	▲ MODER	---	---

Customer Id: WOOSANCA
Sample No.: WC05864816
Lab Number: 05864816
Test Package: PLANT



To manage this report scan the QR code

To discuss the diagnosis or test data:
 Jonathan Hester +1 919-379-4092 x4092
jhester@wearcheckusa.com

To change component or sample information:
 Customer Service +1 1-800-237-1369
customerservice@wearcheck.com

RECOMMENDED ACTIONS

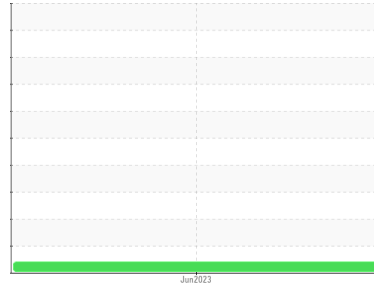
Action	Status	Date	Done By	Description
Change Filter	---	---	?	We recommend you service the filters on this component.
Alert	---	---	?	We were unable to perform a particle count due to a high concentration of particles present in this sample.

HISTORICAL DIAGNOSIS



OIL ANALYSIS REPORT

Sample Rating Trend



VIS DEBRIS



Machine Id
72-PC-23 (S/N 60B)

Component
Hydraulic System
Fluid
Skydrol (--- LTR)

DIAGNOSIS

▲ Recommendation

We recommend you service the filters on this component. Resample at the next service interval to monitor. We were unable to perform a particle count due to a high concentration of particles present in this sample.

Wear

All component wear rates are normal.

▲ Contamination

Moderate concentration of visible dirt/debris present in the oil.

Fluid Condition

The AN level is acceptable for this fluid. The condition of the oil is suitable for further service.

SAMPLE INFORMATION

method	limit/base	current	history1	history2
Sample Number	Client Info	WC05864816	---	---
Sample Date	Client Info	02 Jun 2023	---	---
Machine Age	hrs	Client Info	0	---
Oil Age	hrs	Client Info	0	---
Oil Changed	Client Info	N/A	---	---
Sample Status		ABNORMAL	---	---

WEAR METALS

method	limit/base	current	history1	history2		
Iron	ppm	ASTM D5185m	>20	<1	---	---
Chromium	ppm	ASTM D5185m	>20	4	---	---
Nickel	ppm	ASTM D5185m	>20	<1	---	---
Titanium	ppm	ASTM D5185m		0	---	---
Silver	ppm	ASTM D5185m		0	---	---
Aluminum	ppm	ASTM D5185m	>20	0	---	---
Lead	ppm	ASTM D5185m	>20	0	---	---
Copper	ppm	ASTM D5185m	>20	3	---	---
Tin	ppm	ASTM D5185m	>20	<1	---	---
Vanadium	ppm	ASTM D5185m		0	---	---
Cadmium	ppm	ASTM D5185m		<1	---	---

ADDITIVES

method	limit/base	current	history1	history2		
Boron	ppm	ASTM D5185m		4	---	---
Barium	ppm	ASTM D5185m		0	---	---
Molybdenum	ppm	ASTM D5185m		0	---	---
Manganese	ppm	ASTM D5185m		<1	---	---
Magnesium	ppm	ASTM D5185m		10	---	---
Calcium	ppm	ASTM D5185m	110	8	---	---
Phosphorus	ppm	ASTM D5185m	37	10849	---	---
Zinc	ppm	ASTM D5185m		24	---	---
Sulfur	ppm	ASTM D5185m	220	1927	---	---

CONTAMINANTS

method	limit/base	current	history1	history2		
Silicon	ppm	ASTM D5185m	>15	<1	---	---
Sodium	ppm	ASTM D5185m		4	---	---
Potassium	ppm	ASTM D5185m	>20	20	---	---
Water	%	ASTM D6304	>0.750	NEG	---	---

FLUID DEGRADATION

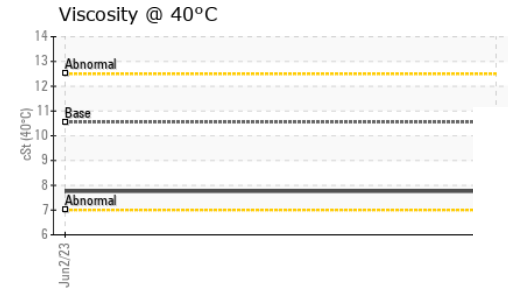
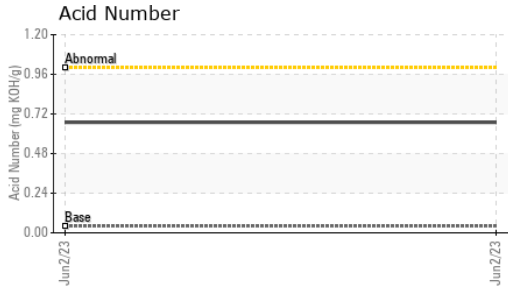
method	limit/base	current	history1	history2		
Acid Number (AN)	mg KOH/g	ASTM D8045	0.04	0.669	---	---

VISUAL

method	limit/base	current	history1	history2		
White Metal	scalar	*Visual	NONE	NONE	---	---
Yellow Metal	scalar	*Visual	NONE	NONE	---	---
Precipitate	scalar	*Visual	NONE	NONE	---	---
Silt	scalar	*Visual	NONE	NONE	---	---
Debris	scalar	*Visual	NONE	▲ MODER	---	---
Sand/Dirt	scalar	*Visual	NONE	NONE	---	---
Appearance	scalar	*Visual	NORML	NORML	---	---
Odor	scalar	*Visual	NORML	NORML	---	---
Emulsified Water	scalar	*Visual	>0.750	NEG	---	---
Free Water	scalar	*Visual		NEG	---	---



OIL ANALYSIS REPORT



FLUID PROPERTIES	method	limit/base	current	history1	history2	
Visc @ 40°C	cSt	ASTM D445	10.55	7.76	---	---

SAMPLE IMAGES	method	limit/base	current	history1	history2
Color				no image	no image
Bottom				no image	no image

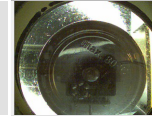
Color



no image

no image

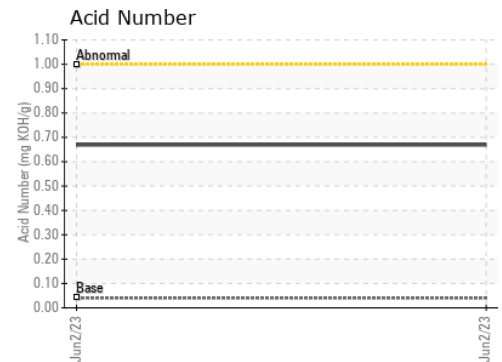
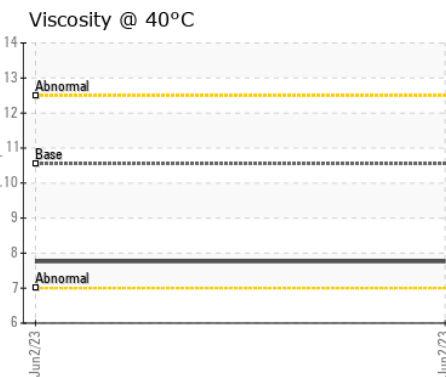
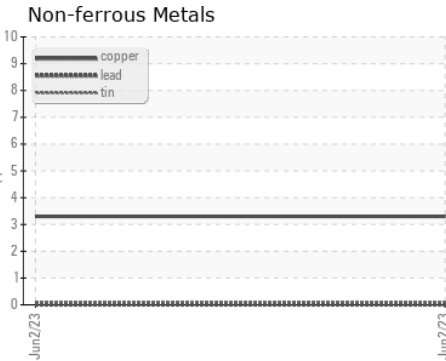
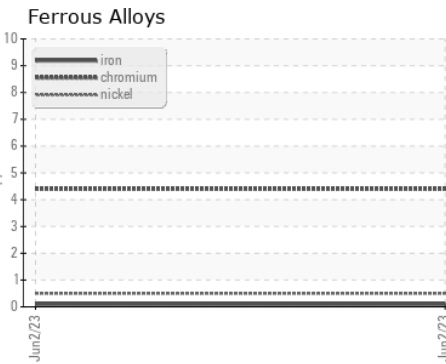
Bottom



no image

no image

GRAPHS



Certificate L2367

Laboratory : WearCheck USA - 501 Madison Ave., Cary, NC 27513
Sample No. : WC05864816 **Received** : 05 Jun 2023
Lab Number : **05864816** **Diagnosed** : 07 Jun 2023
Unique Number : 10499281 **Diagnostician** : Jonathan Hester
Test Package : PLANT (Additional Tests: ChlorineXRF)

WOODWARD
 25200 W RYE CANYON RD
 SANTA CLARITA, CA
 US 91355

Contact: REYNARD GOLDMAN
 reynard.goldman@woodward.com
 T: (661)702-5991

To discuss this sample report, contact Customer Service at 1-800-237-1369.

* - Denotes test methods that are outside of the ISO 17025 scope of accreditation.

Statements of conformity to specifications are based on the simple acceptance decision rule (JCGM 106:2012)

F: