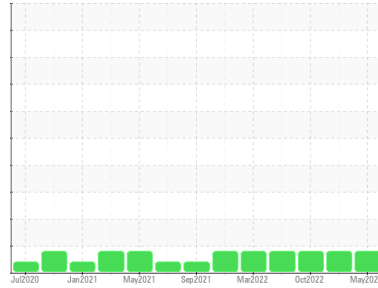




# OIL ANALYSIS REPORT

Sample Rating Trend



ISO



Area  
**P3**  
Machine Id  
**3543-C CRYSTALLIZER GEARBOX**  
Component  
**Agitator Gearbox**  
Fluid  
**MOBIL MOBILGEAR 600 XP ISO 150 (43 GAL)**

## DIAGNOSIS

### Recommendation

No corrective action is recommended at this time. Resample at the next service interval to monitor.

### Wear

All component wear rates are normal.

### Contamination

There is a high amount of silt (particulates < 6 microns in size) present in the oil.

### Fluid Condition

The AN level is acceptable for this fluid. The condition of the oil is suitable for further service.

## SAMPLE INFORMATION

	method	limit/base	current	history1	history2
Sample Number	Client Info		<b>WC0810794</b>	WC0752483	WC0752473
Sample Date	Client Info		<b>31 May 2023</b>	03 Feb 2023	20 Oct 2022
Machine Age	hrs	Client Info	<b>0</b>	0	0
Oil Age	hrs	Client Info	<b>0</b>	0	0
Oil Changed	Client Info		<b>N/A</b>	N/A	N/A
Sample Status			<b>ABNORMAL</b>	ABNORMAL	ABNORMAL

## WEAR METALS

	method	limit/base	current	history1	history2
Iron	ppm	ASTM D5185m >150	<b>6</b>	6	5
Chromium	ppm	ASTM D5185m >10	<b>0</b>	0	0
Nickel	ppm	ASTM D5185m >10	<b>0</b>	0	0
Titanium	ppm	ASTM D5185m	<b>0</b>	0	0
Silver	ppm	ASTM D5185m	<b>0</b>	0	0
Aluminum	ppm	ASTM D5185m >25	<b>0</b>	4	0
Lead	ppm	ASTM D5185m >100	<b>0</b>	0	0
Copper	ppm	ASTM D5185m >50	<b>0</b>	0	0
Tin	ppm	ASTM D5185m >10	<b>0</b>	0	0
Vanadium	ppm	ASTM D5185m	<b>0</b>	0	0
Cadmium	ppm	ASTM D5185m	<b>0</b>	0	0

## ADDITIVES

	method	limit/base	current	history1	history2
Boron	ppm	ASTM D5185m	<b>15</b>	17	16
Barium	ppm	ASTM D5185m	<b>0</b>	0	0
Molybdenum	ppm	ASTM D5185m	<b>0</b>	0	0
Manganese	ppm	ASTM D5185m	<b>&lt;1</b>	<1	<1
Magnesium	ppm	ASTM D5185m	<b>0</b>	0	0
Calcium	ppm	ASTM D5185m	<b>1</b>	<1	<1
Phosphorus	ppm	ASTM D5185m	<b>354</b>	345	323
Zinc	ppm	ASTM D5185m	<b>0</b>	5	2
Sulfur	ppm	ASTM D5185m	<b>19978</b>	19077	18661

## CONTAMINANTS

	method	limit/base	current	history1	history2
Silicon	ppm	ASTM D5185m >50	<b>&lt;1</b>	<1	0
Sodium	ppm	ASTM D5185m	<b>0</b>	0	0
Potassium	ppm	ASTM D5185m >20	<b>1</b>	0	1
Water	%	ASTM D6304 >0.1	<b>0.003</b>	0.009	0.014
ppm Water	ppm	ASTM D6304 >1000	<b>33.3</b>	94.5	140.6

## FLUID CLEANLINESS

	method	limit/base	current	history1	history2
Particles >4µm	ASTM D7647	>20000	<b>▲ 52513</b>	▲ 52956	▲ 63928
Particles >6µm	ASTM D7647	>5000	<b>3825</b>	4515	4922
Particles >14µm	ASTM D7647	>640	<b>82</b>	93	123
Particles >21µm	ASTM D7647	>160	<b>14</b>	12	14
Particles >38µm	ASTM D7647	>40	<b>0</b>	1	0
Particles >71µm	ASTM D7647	>10	<b>0</b>	0	0
Oil Cleanliness	ISO 4406 (c)	>21/19/16	<b>▲ 23/19/14</b>	▲ 23/19/14	▲ 23/19/14

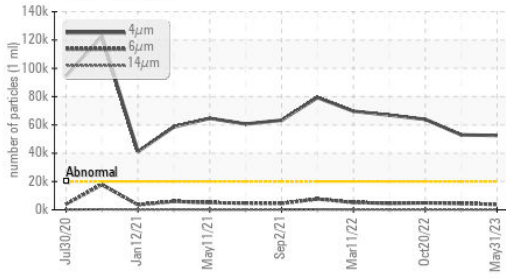
## FLUID DEGRADATION

	method	limit/base	current	history1	history2
Acid Number (AN)	mg KOH/g	ASTM D8045	<b>0.77</b>	0.76	0.84

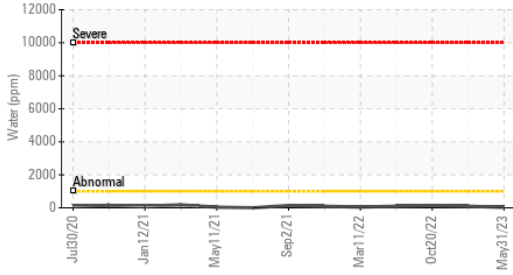


# OIL ANALYSIS REPORT

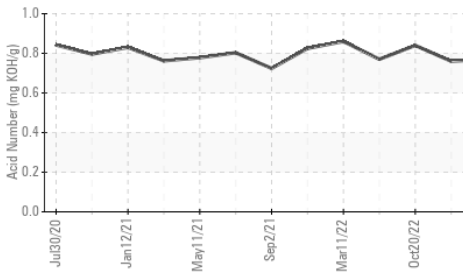
## Particle Trend



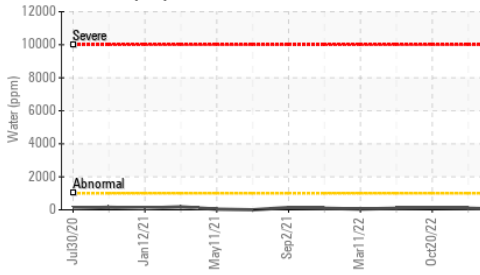
## Water (KF)



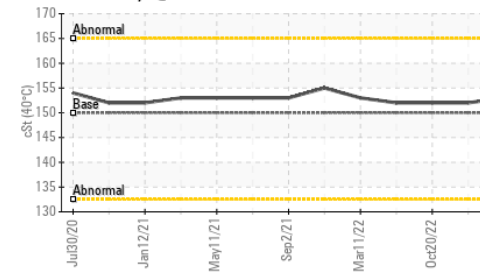
## Acid Number



## Water (KF)



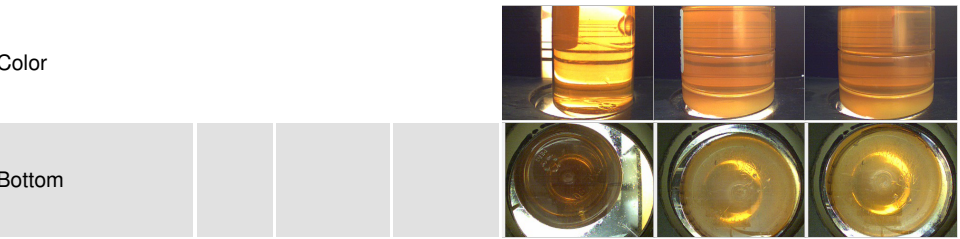
## Viscosity @ 40°C



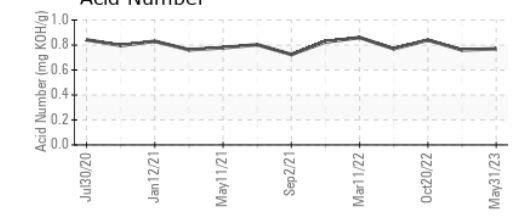
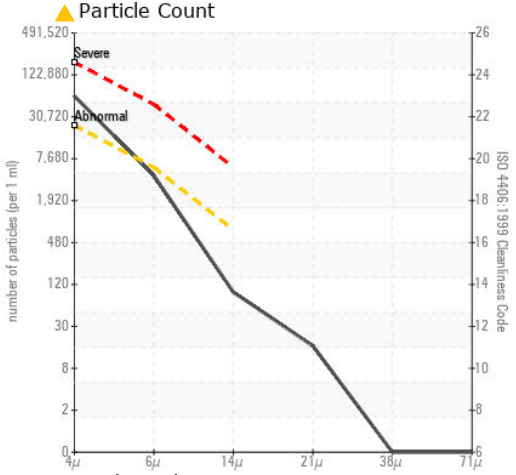
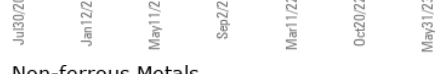
VISUAL	method	limit/base	current	history1	history2
White Metal	scalar	*Visual	NONE	NONE	NONE
Yellow Metal	scalar	*Visual	NONE	NONE	NONE
Precipitate	scalar	*Visual	NONE	NONE	NONE
Silt	scalar	*Visual	NONE	NONE	NONE
Debris	scalar	*Visual	NONE	NONE	NONE
Sand/Dirt	scalar	*Visual	NONE	NONE	NONE
Appearance	scalar	*Visual	NORML	NORML	NORML
Odor	scalar	*Visual	NORML	NORML	NORML
Emulsified Water	scalar	*Visual	>0.1	NEG	NEG
Free Water	scalar	*Visual		NEG	NEG

FLUID PROPERTIES	method	limit/base	current	history1	history2
Visc @ 40°C	cSt	ASTM D445	150	153	152

SAMPLE IMAGES	method	limit/base	current	history1	history2
---------------	--------	------------	---------	----------	----------



## GRAPHS



**Laboratory** : WearCheck USA - 501 Madison Ave., Cary, NC 27513  
**Sample No.** : WC0810794 **Received** : 05 Jun 2023  
**Lab Number** : 05865121 **Diagnosed** : 07 Jun 2023  
**Unique Number** : 10499586 **Diagnostician** : Doug Bogart  
**Test Package** : PLANT

**AJINOMOTO USA**  
 4020 AJINOMOTO DRIVE  
 RALEIGH, NC  
 US 27610  
 Contact: Michael Thompson  
 thompsonm@ajiusa.com  
 T: (919)723-2142  
 F:

Certificate L2367  
 To discuss this sample report, contact Customer Service at 1-800-237-1369.  
 \* - Denotes test methods that are outside of the ISO 17025 scope of accreditation.  
 Statements of conformity to specifications are based on the simple acceptance decision rule (JCGM 106:2012)