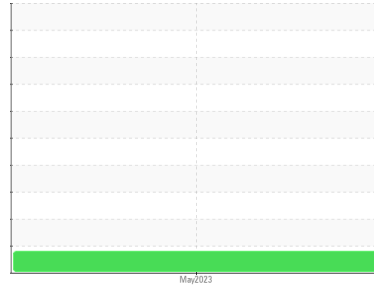




PROBLEM SUMMARY

Sample Rating Trend



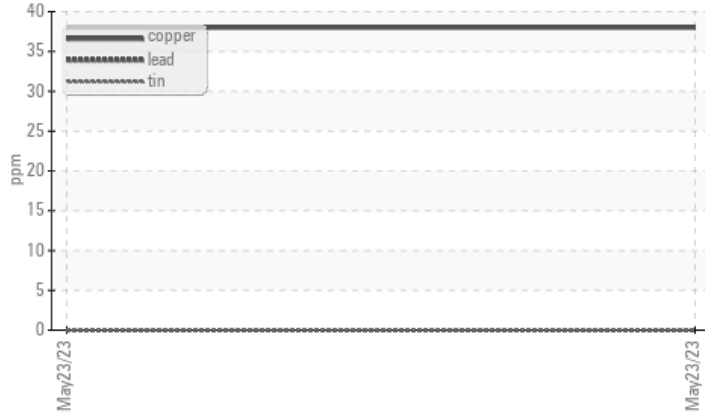
WEAR



Machine Id
BEAVER DAM BRIDGE
 Component
Hydraulic System
 Fluid
MOBIL DTE 24 (400 GAL)

COMPONENT CONDITION SUMMARY

▲ Non-ferrous Metals



RECOMMENDATION

No corrective action is recommended at this time.
 Resample at the next service interval to monitor.

PROBLEMATIC TEST RESULTS

Sample Status	ABNORMAL		---	---		
Copper	ppm	ASTM D5185m	>20	▲ 38	---	---
PrtFilter					no image	no image

Customer Id: ATLSHI
 Sample No.: PH0000262
 Lab Number: 05867831
 Test Package: PLANT



To manage this report scan the QR code

To discuss the diagnosis or test data:
 Doug Bogart +1 (800)237-1369 x4016
dougb@wearcheckusa.com

To change component or sample information:
 Customer Service +1 1-800-237-1369
customerservice@wearcheck.com

RECOMMENDED ACTIONS

There are no recommended actions for this sample.

HISTORICAL DIAGNOSIS



OIL ANALYSIS REPORT

Sample Rating Trend



WEAR



Machine Id
BEAVER DAM BRIDGE
 Component
Hydraulic System
 Fluid
MOBIL DTE 24 (400 GAL)

DIAGNOSIS

▲ Recommendation

No corrective action is recommended at this time. Resample at the next service interval to monitor.

▲ Wear

The copper level is abnormal. All other component wear rates are normal.

Contamination

There is no indication of any contamination in the oil. The amount and size of particulates present in the system are acceptable.

Fluid Condition

The AN level is acceptable for this fluid. The condition of the oil is suitable for further service.

SAMPLE INFORMATION

method	limit/base	current	history1	history2
Sample Number	Client Info	PH0000262	---	---
Sample Date	Client Info	23 May 2023	---	---
Machine Age	hrs	Client Info	0	---
Oil Age	hrs	Client Info	1000	---
Oil Changed	Client Info	Not Changed	---	---
Sample Status		ABNORMAL	---	---

WEAR METALS

method	limit/base	current	history1	history2
Iron	ppm	ASTM D5185m >20	1	---
Chromium	ppm	ASTM D5185m >20	<1	---
Nickel	ppm	ASTM D5185m >20	0	---
Titanium	ppm	ASTM D5185m	0	---
Silver	ppm	ASTM D5185m	0	---
Aluminum	ppm	ASTM D5185m >20	<1	---
Lead	ppm	ASTM D5185m >20	0	---
Copper	ppm	ASTM D5185m >20	▲ 38	---
Tin	ppm	ASTM D5185m >20	0	---
Vanadium	ppm	ASTM D5185m	0	---
Cadmium	ppm	ASTM D5185m	0	---

ADDITIVES

method	limit/base	current	history1	history2
Boron	ppm	ASTM D5185m	0	---
Barium	ppm	ASTM D5185m	0	---
Molybdenum	ppm	ASTM D5185m	0	---
Manganese	ppm	ASTM D5185m	<1	---
Magnesium	ppm	ASTM D5185m	0	---
Calcium	ppm	ASTM D5185m	139	---
Phosphorus	ppm	ASTM D5185m	469	---
Zinc	ppm	ASTM D5185m	718	---
Sulfur	ppm	ASTM D5185m	4783	---

CONTAMINANTS

method	limit/base	current	history1	history2
Silicon	ppm	ASTM D5185m >15	<1	---
Sodium	ppm	ASTM D5185m	2	---
Potassium	ppm	ASTM D5185m >20	0	---

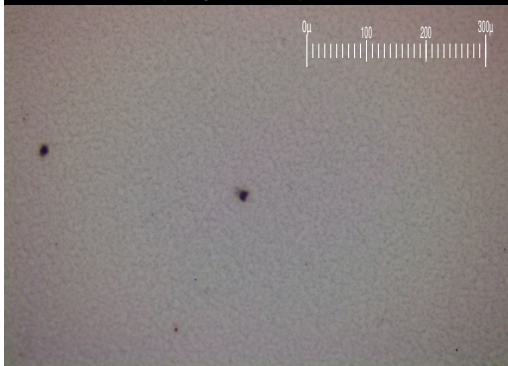
FLUID CLEANLINESS

method	limit/base	current	history1	history2
Particles >4µm	ASTM D7647	>5000	685	---
Particles >6µm	ASTM D7647	>1300	205	---
Particles >14µm	ASTM D7647	>320	8	---
Particles >21µm	ASTM D7647	>80	2	---
Particles >38µm	ASTM D7647	>20	0	---
Particles >71µm	ASTM D7647	>4	0	---
Oil Cleanliness	ISO 4406 (c)	>19/17/15	17/15/10	---

FLUID DEGRADATION

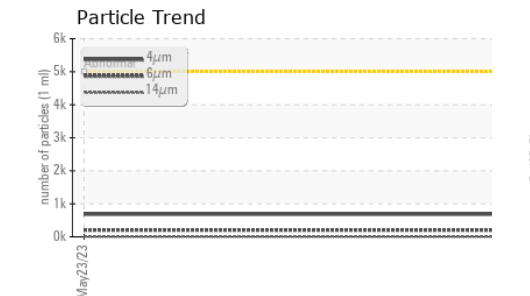
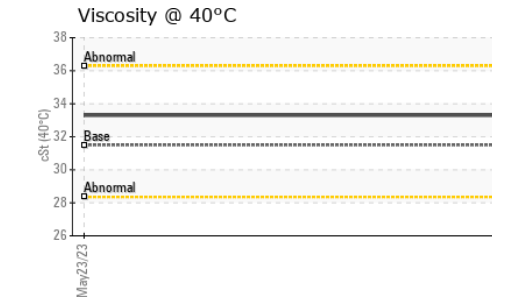
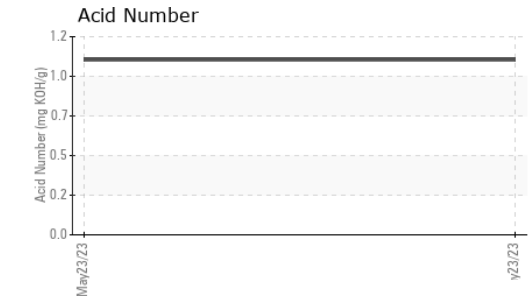
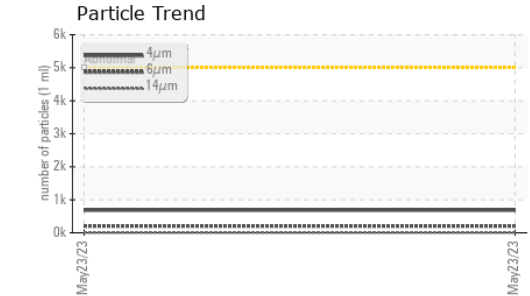
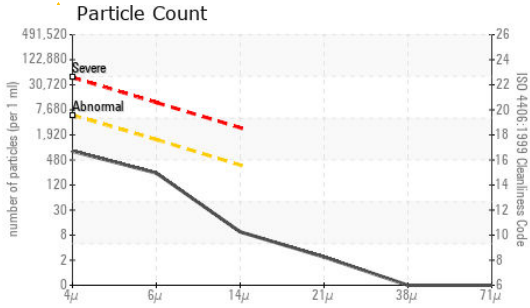
method	limit/base	current	history1	history2
Acid Number (AN)	mg KOH/g	ASTM D8045	1.06	---

Particle Filter (Magn: 200 x)





OIL ANALYSIS REPORT



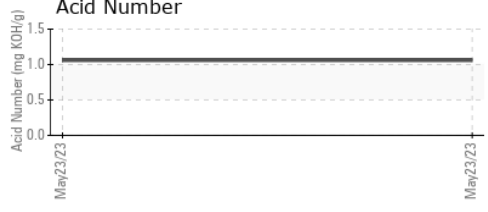
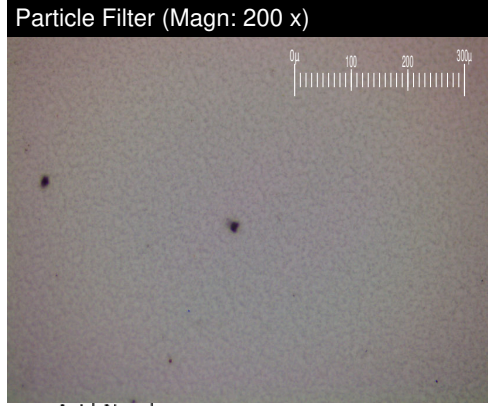
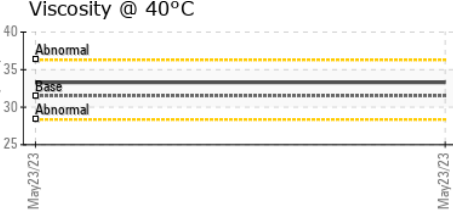
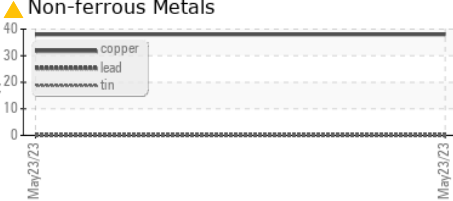
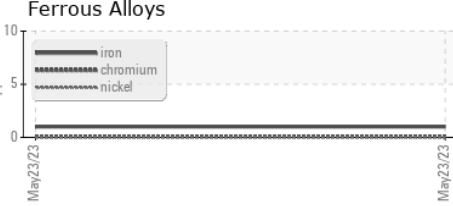
VISUAL	method	limit/base	current	history1	history2	
White Metal	scalar	*Visual	NONE	NONE	---	---
Yellow Metal	scalar	*Visual	NONE	NONE	---	---
Precipitate	scalar	*Visual	NONE	NONE	---	---
Silt	scalar	*Visual	NONE	NONE	---	---
Debris	scalar	*Visual	NONE	NONE	---	---
Sand/Dirt	scalar	*Visual	NONE	NONE	---	---
Appearance	scalar	*Visual	NORML	NORML	---	---
Odor	scalar	*Visual	NORML	NORML	---	---
Emulsified Water	scalar	*Visual	>0.05	NEG	---	---
Free Water	scalar	*Visual		NEG	---	---

FLUID PROPERTIES	method	limit/base	current	history1	history2	
Visc @ 40°C	cSt	ASTM D445	31.5	33.3	---	---

SAMPLE IMAGES	method	limit/base	current	history1	history2
---------------	--------	------------	---------	----------	----------

Color				no image	no image
Bottom				no image	no image
PrtFilter				no image	no image

GRAPHS



Laboratory : WearCheck USA - 501 Madison Ave., Cary, NC 27513
Sample No. : PH0000262 **Received** : 08 Jun 2023
Lab Number : 05867831 **Diagnosed** : 22 Jun 2023
Unique Number : 10507615 **Diagnostician** : Doug Bogart
Test Package : PLANT (Additional Tests: PrtFilter, PrtFilterPic)

ATLANTIC HYDRAULIC SYSTEMS
 90 PRECISION DR
 SHIRLEY, NY
 US 11967
 Contact: JOHN HERNANDEZ

To discuss this sample report, contact Customer Service at 1-800-237-1369.
 * - Denotes test methods that are outside of the ISO 17025 scope of accreditation.
 Statements of conformity to specifications are based on the simple acceptance decision rule (JCGM 106:2012)

T:
F: