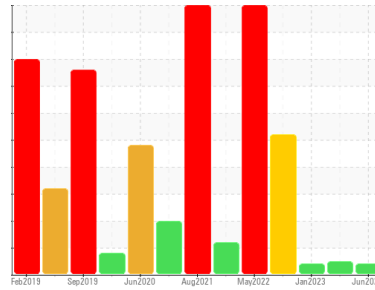




OIL ANALYSIS REPORT

Sample Rating Trend



VIS DEBRIS



Machine Id
BFP-1B

Component
Outboard Bearing

Fluid
ROYAL PURPLE SYNFILM GT 68 (--- GAL)

DIAGNOSIS

Recommendation

We recommend you service the filters on this component. Resample at the next service interval to monitor.

Wear

All component wear rates are normal.

Contamination

Moderate concentration of visible dirt/debris present in the oil. The water content is negligible.

Fluid Condition

The AN level is acceptable for this fluid. The condition of the oil is suitable for further service.

SAMPLE INFORMATION

method	limit/base	current	history1	history2
Sample Number	Client Info	RP0031551	RP0031558	RP0031531
Sample Date	Client Info	11 Jun 2023	19 Feb 2023	17 Jan 2023
Machine Age	hrs	0	0	0
Oil Age	hrs	0	0	0
Oil Changed	Client Info	N/A	N/A	N/A
Sample Status		ABNORMAL	NORMAL	ABNORMAL

WEAR METALS

method	limit/base	current	history1	history2	
Iron	ppm	ASTM D5185m >20	8	9	15
Chromium	ppm	ASTM D5185m >20	0	0	<1
Nickel	ppm	ASTM D5185m >20	0	0	0
Titanium	ppm	ASTM D5185m	0	0	0
Silver	ppm	ASTM D5185m	0	0	0
Aluminum	ppm	ASTM D5185m >20	<1	<1	0
Lead	ppm	ASTM D5185m >20	3	2	3
Copper	ppm	ASTM D5185m >20	18	13	9
Tin	ppm	ASTM D5185m >20	<1	<1	1
Vanadium	ppm	ASTM D5185m	0	0	0
Cadmium	ppm	ASTM D5185m	0	0	0

ADDITIVES

method	limit/base	current	history1	history2	
Boron	ppm	ASTM D5185m	0	3	0
Barium	ppm	ASTM D5185m	0	0	0
Molybdenum	ppm	ASTM D5185m	0	0	0
Manganese	ppm	ASTM D5185m	<1	<1	<1
Magnesium	ppm	ASTM D5185m 90	65	72	80
Calcium	ppm	ASTM D5185m	0	16	3
Phosphorus	ppm	ASTM D5185m	<1	38	12
Zinc	ppm	ASTM D5185m	0	9	4

CONTAMINANTS

method	limit/base	current	history1	history2	
Silicon	ppm	ASTM D5185m >15	<1	2	3
Sodium	ppm	ASTM D5185m	<1	<1	<1
Potassium	ppm	ASTM D5185m >20	0	0	<1
Water	%	ASTM D6304 >2	0.011	0.00	0.006
ppm Water	ppm	ASTM D6304	110.6	0.00	60.3

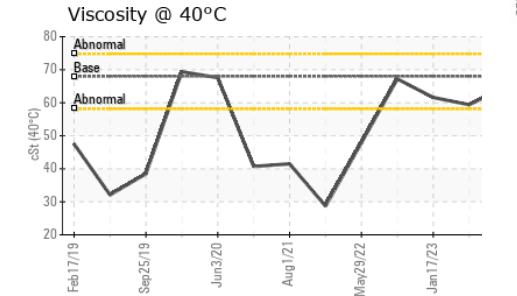
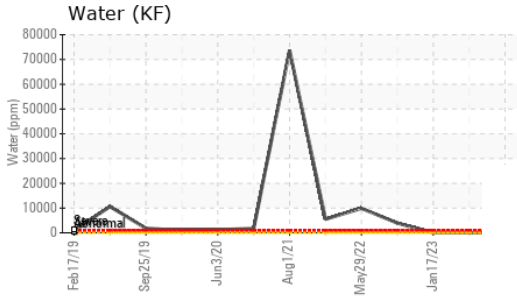
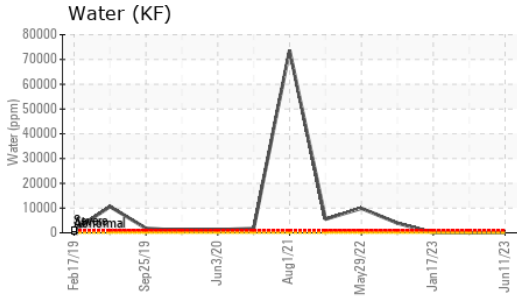
FLUID DEGRADATION

method	limit/base	current	history1	history2	
Acid Number (AN)	mg KOH/g	ASTM D8045	0.29	0.33	0.33

VISUAL

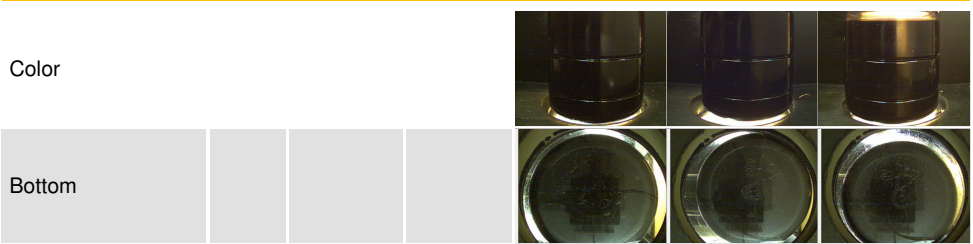
method	limit/base	current	history1	history2	
White Metal	scalar	*Visual NONE	NONE	NONE	LIGHT
Yellow Metal	scalar	*Visual NONE	NONE	NONE	NONE
Precipitate	scalar	*Visual NONE	NONE	NONE	NONE
Silt	scalar	*Visual NONE	NONE	NONE	NONE
Debris	scalar	*Visual NONE	▲ MODER	NONE	▲ MODER
Sand/Dirt	scalar	*Visual NONE	NONE	NONE	NONE
Appearance	scalar	*Visual NORML	NORML	NORML	NORML
Odor	scalar	*Visual NORML	NORML	NORML	NORML
Emulsified Water	scalar	*Visual >2	NEG	NEG	NEG
Free Water	scalar	*Visual >	NEG	NEG	NEG

OIL ANALYSIS REPORT

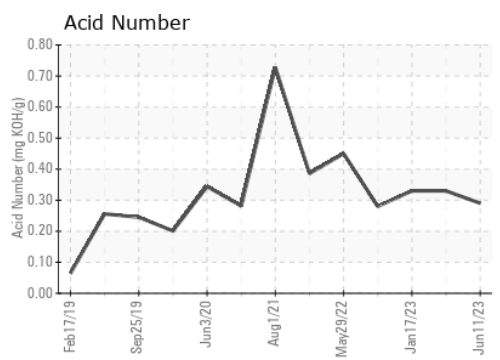
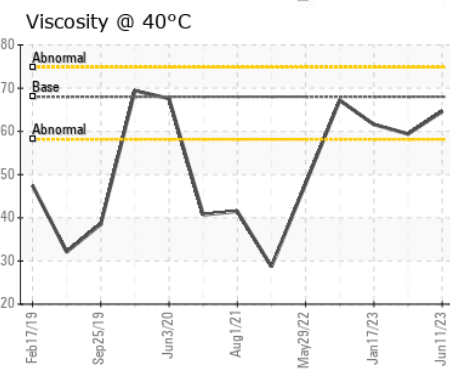
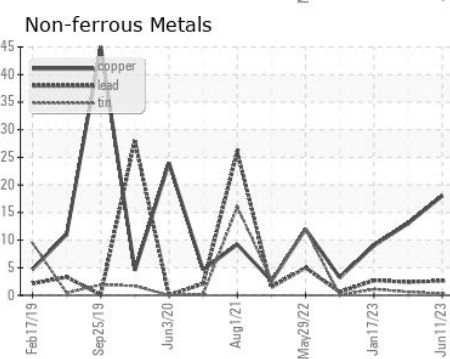
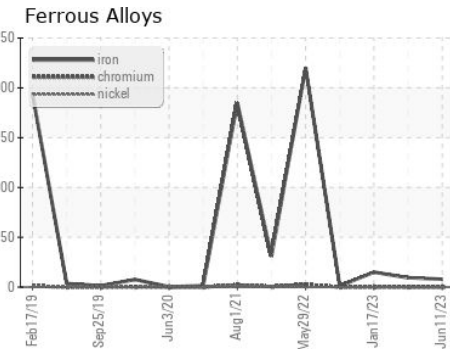


FLUID PROPERTIES	method	limit/base	current	history1	history2
Visc @ 40°C	cSt	ASTM D445 68	64.6	59.4	61.6

SAMPLE IMAGES	method	limit/base	current	history1	history2
---------------	--------	------------	---------	----------	----------



GRAPHS



Laboratory : WearCheck USA - 501 Madison Ave., Cary, NC 27513
Sample No. : RP0031551 **Received** : 12 Jun 2023
Lab Number : **05871002** **Diagnosed** : 14 Jun 2023
Unique Number : 10510786 **Diagnostician** : Don Baldrige
Test Package : IND 2

ENGIE-MATEP
 474 BROOKLINE AVE
 BOSTON, MA
 US 02215
 Contact: ROBERT ST SAUVEUR
 robert.stsauveur@engie.com
 T: (401)651-9381
 F:

Certificate L2367
 To discuss this sample report, contact Customer Service at 1-800-237-1369.
 * - Denotes test methods that are outside of the ISO 17025 scope of accreditation.
 Statements of conformity to specifications are based on the simple acceptance decision rule (JCGM 106:2012)