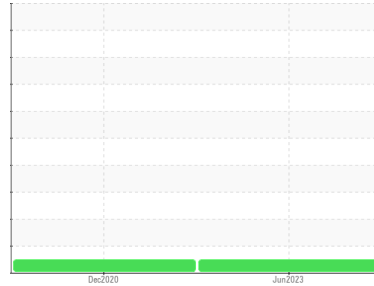




OIL ANALYSIS REPORT

Sample Rating Trend

NORMAL



Machine Id
MM-1 (S/N P12MHTM1)
 Component
Gearbox
 Fluid
ROYAL PURPLE SYNFILM GT 220 (--- GAL)

DIAGNOSIS

Recommendation

Resample at the next service interval to monitor.

Wear

All component wear rates are normal.

Contamination

The water content is negligible. There is no indication of any contamination in the oil.

Fluid Condition

The AN level is acceptable for this fluid. The condition of the oil is suitable for further service.

SAMPLE INFORMATION		method	limit/base	current	history1	history2
Sample Number	Client Info			RP0030074	RP0013489	---
Sample Date	Client Info			05 Jun 2023	15 Dec 2020	---
Machine Age	mths	Client Info		0	0	---
Oil Age	mths	Client Info		6	4380	---
Oil Changed	Client Info			Not Changed	Not Changed	---
Sample Status				NORMAL	NORMAL	---

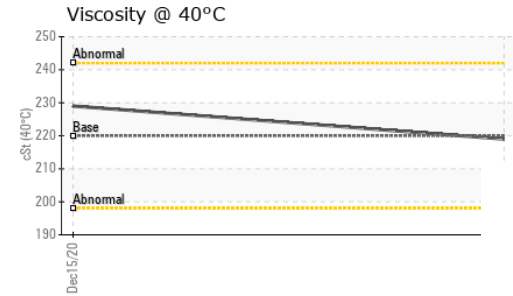
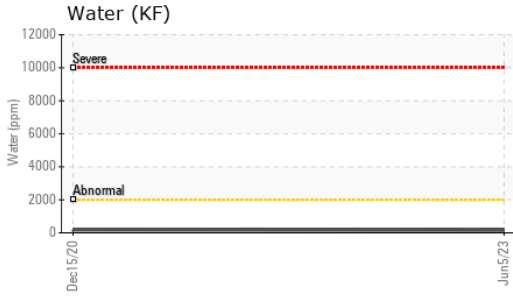
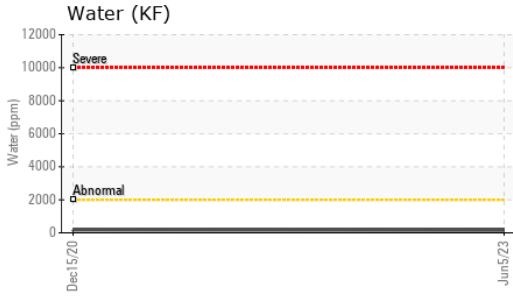
WEAR METALS		method	limit/base	current	history1	history2
Iron	ppm	ASTM D5185m	>200	2	<1	---
Chromium	ppm	ASTM D5185m	>15	0	0	---
Nickel	ppm	ASTM D5185m	>15	<1	0	---
Titanium	ppm	ASTM D5185m		0	0	---
Silver	ppm	ASTM D5185m		0	<1	---
Aluminum	ppm	ASTM D5185m	>25	0	0	---
Lead	ppm	ASTM D5185m	>100	0	0	---
Copper	ppm	ASTM D5185m	>200	0	0	---
Tin	ppm	ASTM D5185m	>25	0	0	---
Antimony	ppm	ASTM D5185m	>5	---	0	---
Vanadium	ppm	ASTM D5185m		0	0	---
Cadmium	ppm	ASTM D5185m		0	0	---

ADDITIVES		method	limit/base	current	history1	history2
Boron	ppm	ASTM D5185m		0	<1	---
Barium	ppm	ASTM D5185m		2	0	---
Molybdenum	ppm	ASTM D5185m		0	0	---
Manganese	ppm	ASTM D5185m		0	0	---
Magnesium	ppm	ASTM D5185m		81	87	---
Calcium	ppm	ASTM D5185m		<1	2	---
Phosphorus	ppm	ASTM D5185m		<1	2	---
Zinc	ppm	ASTM D5185m		3	0	---

CONTAMINANTS		method	limit/base	current	history1	history2
Silicon	ppm	ASTM D5185m	>50	<1	0	---
Sodium	ppm	ASTM D5185m		0	0	---
Potassium	ppm	ASTM D5185m	>20	<1	0	---
Water	%	ASTM D6304	>0.2	0.015	0.017	---
ppm Water	ppm	ASTM D6304	>2000	158.9	178.1	---

FLUID DEGRADATION		method	limit/base	current	history1	history2
Acid Number (AN)	mg KOH/g	ASTM D8045		0.41	0.403	---

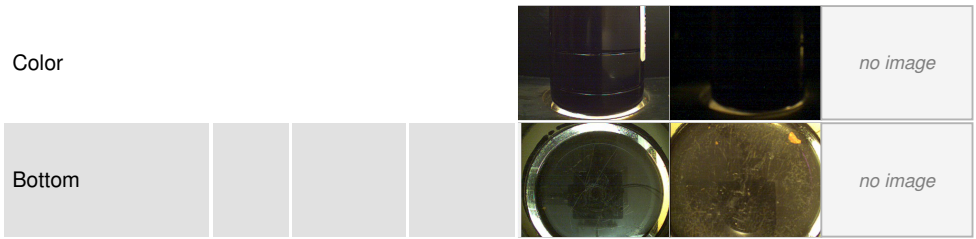
OIL ANALYSIS REPORT



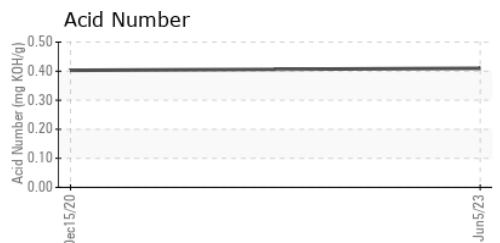
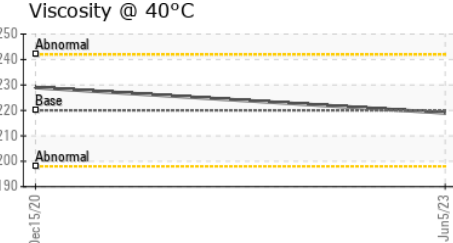
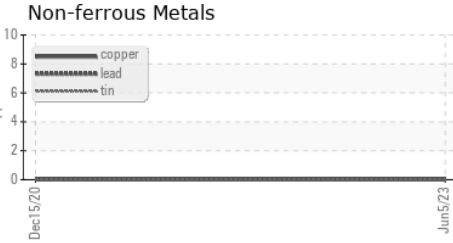
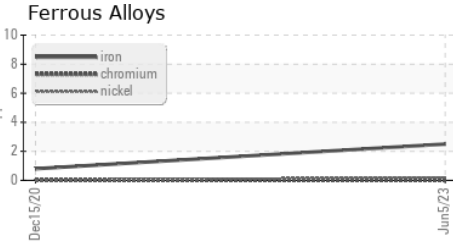
VISUAL	method	limit/base	current	history1	history2	
White Metal	scalar	*Visual	NONE	LIGHT	NONE	---
Yellow Metal	scalar	*Visual	NONE	NONE	NONE	---
Precipitate	scalar	*Visual	NONE	NONE	NONE	---
Silt	scalar	*Visual	NONE	NONE	NONE	---
Debris	scalar	*Visual	NONE	LIGHT	LIGHT	---
Sand/Dirt	scalar	*Visual	NONE	NONE	NONE	---
Appearance	scalar	*Visual	NORML	NORML	NORML	---
Odor	scalar	*Visual	NORML	NORML	NORML	---
Emulsified Water	scalar	*Visual	>0.2	NEG	NEG	---
Free Water	scalar	*Visual		NEG	NEG	---

FLUID PROPERTIES	method	limit/base	current	history1	history2	
Visc @ 40°C	cSt	ASTM D445	220	219	229	---

SAMPLE IMAGES	method	limit/base	current	history1	history2
---------------	--------	------------	---------	----------	----------



GRAPHS



Certificate L2367

Laboratory : WearCheck USA - 501 Madison Ave., Cary, NC 27513
Sample No. : RP0030074 **Received** : 14 Jun 2023
Lab Number : 05873915 **Diagnosed** : 16 Jun 2023
Unique Number : 10519018 **Diagnostician** : Don Baldrige
Test Package : IND 2

VEOLIA SMITHFIELD
P.O. BOX 17249
SMITHFIELD, RI
US 02917
Contact: KEVIN REGAN
kevin.regan@veolia.com
T: (401)231-1506
F: (401)231-7089

To discuss this sample report, contact Customer Service at 1-800-237-1369.

* - Denotes test methods that are outside of the ISO 17025 scope of accreditation.

Statements of conformity to specifications are based on the simple acceptance decision rule (JCGM 106:2012)