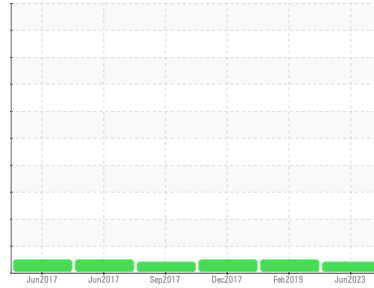




OIL ANALYSIS REPORT

Sample Rating Trend



VISCOSITY



Area
FRAC [5526924]
 Machine Id
SHARPE MIXERS CLV221 AG001
 Component
Gearbox
 Fluid
NOT GIVEN (2 GAL)

DIAGNOSIS

▲ Recommendation

Resample at the next service interval to monitor. Please specify the brand, type, and viscosity of the oil on your next sample.

Wear

All component wear rates are normal.

Contamination

There is no indication of any contamination in the oil.

▲ Fluid Condition

The oil viscosity is lower than normal. The AN level is acceptable for this fluid.

SAMPLE INFORMATION		method	limit/base	current	history1	history2
Sample Number	Client Info			WC0810142	WCI2351704	WCI2307367
Sample Date	Client Info			01 Jun 2023	22 Feb 2019	18 Dec 2017
Machine Age	yrs	Client Info		0	0	1
Oil Age	yrs	Client Info		0	0	0
Oil Changed	Client Info			N/A	N/A	N/A
Sample Status				ATTENTION	NORMAL	NORMAL

CONTAMINATION		method	limit/base	current	history1	history2
Water	WC Method		>0.2	NEG	NEG	NEG

WEAR METALS		method	limit/base	current	history1	history2
Iron	ppm	ASTM D5185m	>200	21	3	2
Chromium	ppm	ASTM D5185m	>15	<1	<1	<1
Nickel	ppm	ASTM D5185m	>15	<1	<1	<1
Titanium	ppm	ASTM D5185m		0	0	0
Silver	ppm	ASTM D5185m		0	0	0
Aluminum	ppm	ASTM D5185m	>25	0	0	0
Lead	ppm	ASTM D5185m	>100	0	0	0
Copper	ppm	ASTM D5185m	>200	0	2	17
Tin	ppm	ASTM D5185m	>25	0	<1	1
Antimony	ppm	ASTM D5185m	>5	---	0	0
Vanadium	ppm	ASTM D5185m		0	0	0
Cadmium	ppm	ASTM D5185m		0	0	0

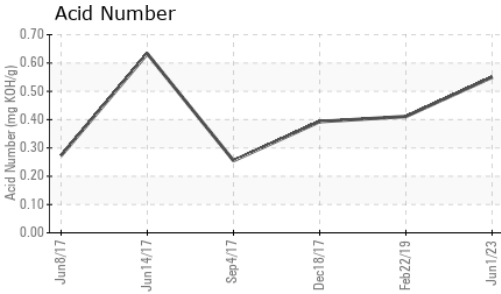
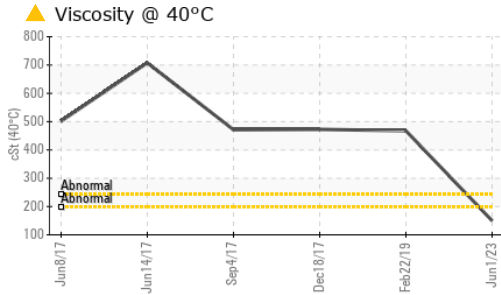
ADDITIVES		method	limit/base	current	history1	history2
Boron	ppm	ASTM D5185m		0	<1	<1
Barium	ppm	ASTM D5185m		1	<1	0
Molybdenum	ppm	ASTM D5185m		0	<1	0
Manganese	ppm	ASTM D5185m		<1	<1	<1
Magnesium	ppm	ASTM D5185m		<1	<1	0
Calcium	ppm	ASTM D5185m		<1	4	<1
Phosphorus	ppm	ASTM D5185m		620	278	269
Zinc	ppm	ASTM D5185m		<1	4	2
Sulfur	ppm	ASTM D5185m		671	405	394

CONTAMINANTS		method	limit/base	current	history1	history2
Silicon	ppm	ASTM D5185m	>50	12	1	7
Sodium	ppm	ASTM D5185m		<1	0	0
Potassium	ppm	ASTM D5185m	>20	<1	<1	0

FLUID DEGRADATION		method	limit/base	current	history1	history2
Acid Number (AN)	mg KOH/g	ASTM D8045		0.55	0.411	0.393



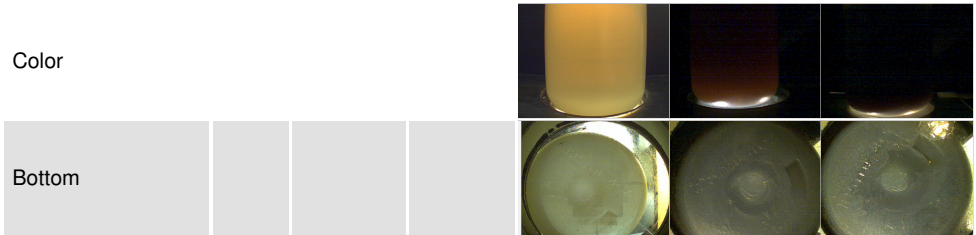
OIL ANALYSIS REPORT



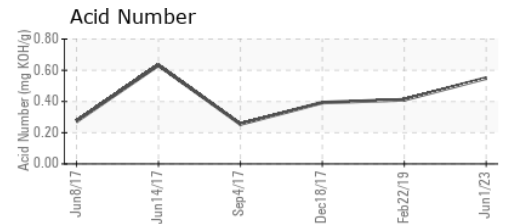
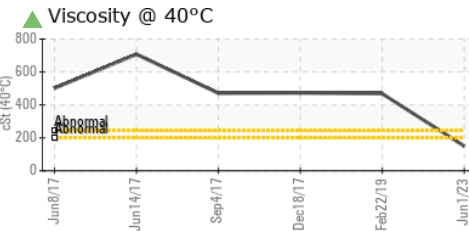
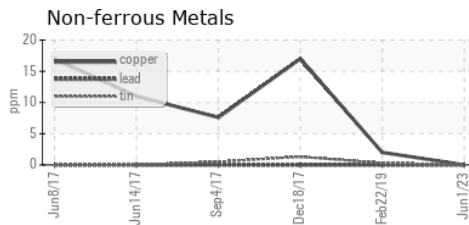
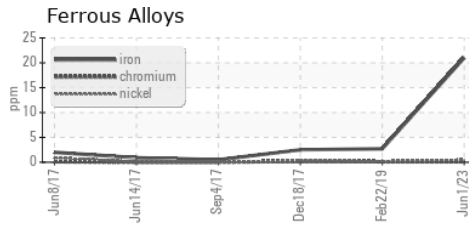
VISUAL	method	limit/base	current	history1	history2
White Metal	scalar	*Visual	NONE	NONE	NONE
Yellow Metal	scalar	*Visual	NONE	NONE	NONE
Precipitate	scalar	*Visual	NONE	NONE	NONE
Silt	scalar	*Visual	NONE	NONE	NONE
Debris	scalar	*Visual	NONE	NONE	NONE
Sand/Dirt	scalar	*Visual	NONE	NONE	NONE
Appearance	scalar	*Visual	NORML	NORML	NORML
Odor	scalar	*Visual	NORML	NORML	NORML
Emulsified Water	scalar	*Visual	>0.2	NEG	NEG
Free Water	scalar	*Visual		NEG	NEG

FLUID PROPERTIES	method	limit/base	current	history1	history2
Visc @ 40°C	cSt	ASTM D445	▲ 150	467.7	472.6

SAMPLE IMAGES	method	limit/base	current	history1	history2
---------------	--------	------------	---------	----------	----------



GRAPHS



Certificate L2367

Laboratory : WearCheck USA - 501 Madison Ave., Cary, NC 27513
Sample No. : WC0810142 **Received** : 15 Jun 2023
Lab Number : 05874567 **Diagnosed** : 17 Jun 2023
Unique Number : 10519670 **Diagnostician** : Don Baldrige
Test Package : IND 2

TAKEDA
 305-505 BAXALTA PARKWAY
 SOCIAL CIRCLE, GA
 US 30025
 Contact: BRANDON INMAN
 BRANDON.INMAN@SHIRE.COM

To discuss this sample report, contact Customer Service at 1-800-237-1369.

* - Denotes test methods that are outside of the ISO 17025 scope of accreditation.

Statements of conformity to specifications are based on the simple acceptance decision rule (JCGM 106:2012)

T:
F: