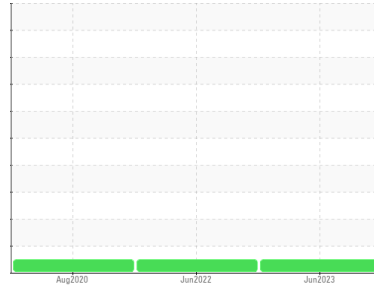




# OIL ANALYSIS REPORT

Sample Rating Trend

**NORMAL**



Area  
**FINISHING BAY CRANES**  
 Machine Id  
**EST 20.1 NORTHWEST BRIDGE**  
 Component  
**Gearbox**  
 Fluid  
**GEAR OIL ISO 220 (--- QTS)**

## DIAGNOSIS

### Recommendation

Resample at the next service interval to monitor.

### Wear

All component wear rates are normal.

### Contamination

There is no indication of any contamination in the oil.

### Fluid Condition

The AN level is acceptable for this fluid. The condition of the oil is suitable for further service.

SAMPLE INFORMATION		method	limit/base	current	history1	history2
Sample Number	Client Info			<b>RP0035371</b>	RP0026414	RP05055682
Sample Date	Client Info			<b>20 Jun 2023</b>	23 Jun 2022	30 Aug 2020
Machine Age	hrs	Client Info		<b>0</b>	0	0
Oil Age	hrs	Client Info		<b>0</b>	0	0
Oil Changed	Client Info			<b>N/A</b>	N/A	N/A
Sample Status				<b>NORMAL</b>	NORMAL	NORMAL

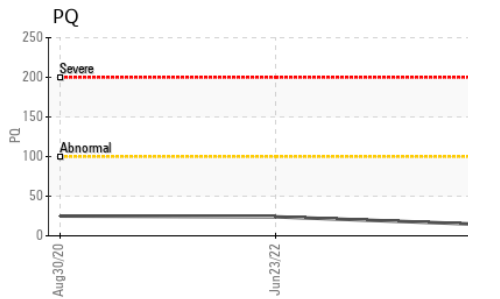
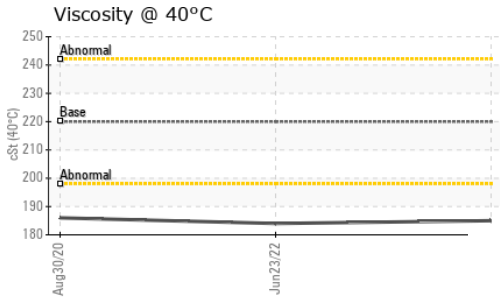
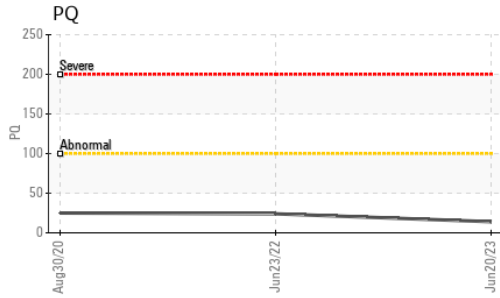
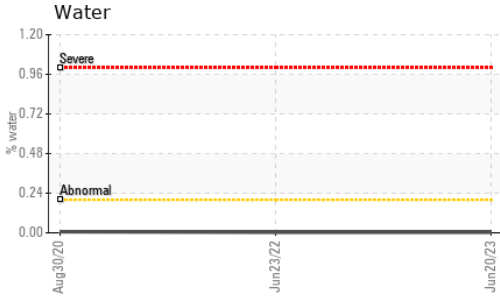
WEAR METALS		method	limit/base	current	history1	history2
PQ		ASTM D8184		<b>14</b>	24	25
Iron	ppm	ASTM D5185m	>200	<b>37</b>	0	31
Chromium	ppm	ASTM D5185m	>15	<b>&lt;1</b>	0	<1
Nickel	ppm	ASTM D5185m	>15	<b>1</b>	0	0
Titanium	ppm	ASTM D5185m		<b>0</b>	0	<1
Silver	ppm	ASTM D5185m		<b>0</b>	<1	0
Aluminum	ppm	ASTM D5185m	>25	<b>0</b>	0	<1
Lead	ppm	ASTM D5185m	>100	<b>0</b>	<1	1
Copper	ppm	ASTM D5185m	>200	<b>0</b>	0	<1
Tin	ppm	ASTM D5185m	>25	<b>&lt;1</b>	<1	0
Antimony	ppm	ASTM D5185m	>5	<b>---</b>	0	0
Vanadium	ppm	ASTM D5185m		<b>0</b>	0	0
Cadmium	ppm	ASTM D5185m		<b>0</b>	0	<1

ADDITIVES		method	limit/base	current	history1	history2
Boron	ppm	ASTM D5185m	50	<b>0</b>	<1	2
Barium	ppm	ASTM D5185m	15	<b>0</b>	0	<1
Molybdenum	ppm	ASTM D5185m	15	<b>0</b>	0	0
Manganese	ppm	ASTM D5185m		<b>1</b>	0	<1
Magnesium	ppm	ASTM D5185m	50	<b>&lt;1</b>	0	<1
Calcium	ppm	ASTM D5185m	50	<b>12</b>	0	11
Phosphorus	ppm	ASTM D5185m	350	<b>232</b>	0	204
Zinc	ppm	ASTM D5185m	100	<b>0</b>	0	9

CONTAMINANTS		method	limit/base	current	history1	history2
Silicon	ppm	ASTM D5185m	>50	<b>23</b>	0	24
Sodium	ppm	ASTM D5185m		<b>1</b>	0	<1
Potassium	ppm	ASTM D5185m	>20	<b>4</b>	0	7
Water	%	ASTM D6304	>0.2	<b>0.003</b>	0.003	0.006
ppm Water	ppm	ASTM D6304	>2000	<b>25.7</b>	37.1	68.1

FLUID DEGRADATION		method	limit/base	current	history1	history2
Acid Number (AN)	mg KOH/g	ASTM D8045	0.85	<b>0.51</b>	0.51	0.532

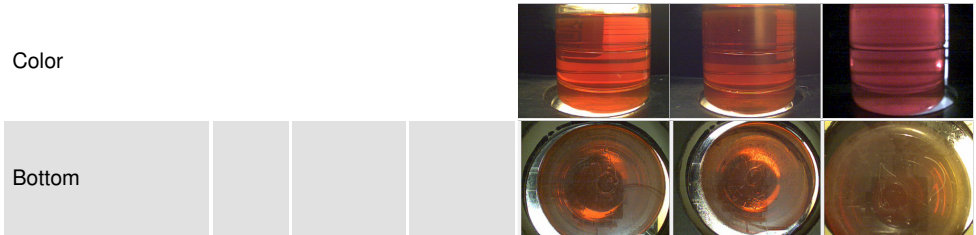
# OIL ANALYSIS REPORT



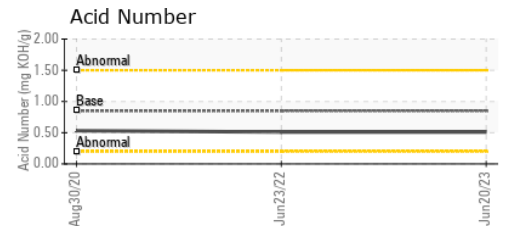
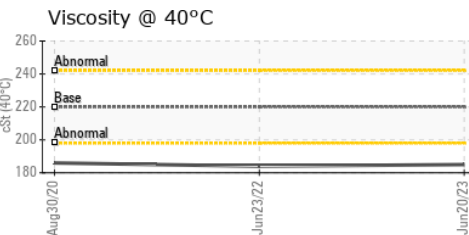
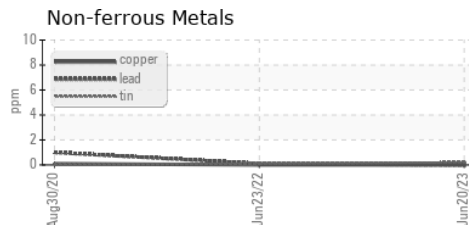
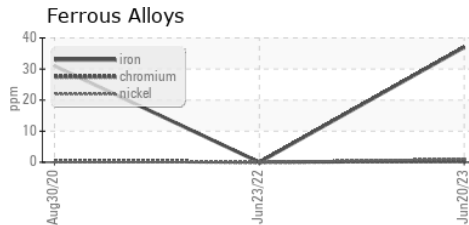
VISUAL	method	limit/base	current	history1	history2
White Metal	scalar	*Visual	NONE	NONE	LIGHT
Yellow Metal	scalar	*Visual	NONE	NONE	NONE
Precipitate	scalar	*Visual	NONE	NONE	NONE
Silt	scalar	*Visual	NONE	NONE	NONE
Debris	scalar	*Visual	NONE	NONE	NONE
Sand/Dirt	scalar	*Visual	NONE	NONE	NONE
Appearance	scalar	*Visual	NORML	NORML	NORML
Odor	scalar	*Visual	NORML	NORML	NORML
Emulsified Water	scalar	*Visual	>0.2	NEG	NEG
Free Water	scalar	*Visual		NEG	NEG

FLUID PROPERTIES	method	limit/base	current	history1	history2
Visc @ 40°C	cSt	ASTM D445	220	185	184

SAMPLE IMAGES	method	limit/base	current	history1	history2
---------------	--------	------------	---------	----------	----------



## GRAPHS



Certificate L2367

**Laboratory** : WearCheck USA - 501 Madison Ave., Cary, NC 27513  
**Sample No.** : RP0035371 **Received** : 22 Jun 2023  
**Lab Number** : 05880949 **Diagnosed** : 26 Jun 2023  
**Unique Number** : 10526052 **Diagnostician** : Don Baldrige

**Test Package** : IND 2 ( Additional Tests: PQ, PrtCount )

To discuss this sample report, contact Customer Service at 1-800-237-1369.

\* - Denotes test methods that are outside of the ISO 17025 scope of accreditation.

Statements of conformity to specifications are based on the simple acceptance decision rule (JCGM 106:2012)

**OUTOKUMPU STAINLESS USA**  
 HWY 43 N  
 CALVERT, AL  
 US 36513  
 Contact: MARIO JOHNSON  
 Mario.johnson@outokumpu.com  
 T: (251)321-4105  
 F: x: