



# PROBLEM SUMMARY

Sample Rating Trend



VISUAL METAL

Machine Id  
**P-3121 P-3121**

Component  
**Outboard Bearing**

Fluid  
**ROYAL PURPLE SYNFILM 32 (--- GAL)**

## COMPONENT CONDITION SUMMARY

No relevant graphs to display

## RECOMMENDATION

We suspect abnormal metal contamination may be due to sampling method. No corrective action is recommended at this time. Resample at the next service interval to monitor.

## PROBLEMATIC TEST RESULTS

|               |        |         |      |                 |     |     |
|---------------|--------|---------|------|-----------------|-----|-----|
| Sample Status |        |         |      | <b>ABNORMAL</b> | --- | --- |
| White Metal   | scalar | *Visual | NONE | <b>▲ MODER</b>  | --- | --- |

**Customer Id:** ENEWATND  
**Sample No.:** RP0032292  
**Lab Number:** 05898662  
**Test Package:** IND 2



To manage this report scan the QR code

To discuss the diagnosis or test data:  
Jonathan Hester +1 919-379-4092 x4092  
[jhester@wearcheckusa.com](mailto:jhester@wearcheckusa.com)

To change component or sample information:  
Customer Service +1 1-800-237-1369  
[customerservice@wearcheck.com](mailto:customerservice@wearcheck.com)

## RECOMMENDED ACTIONS

*There are no recommended actions for this sample.*

## HISTORICAL DIAGNOSIS

# OIL ANALYSIS REPORT

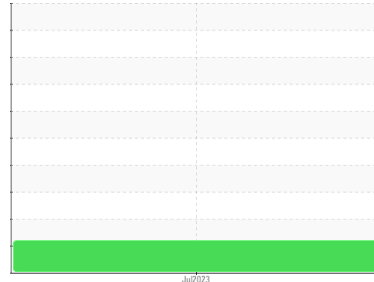
Sample Rating Trend

VISUAL METAL

Machine Id  
**P-3121 P-3121**

Component  
**Outboard Bearing**

Fluid  
**ROYAL PURPLE SYNFILM 32 (--- GAL)**



## DIAGNOSIS

### Recommendation

We suspect abnormal metal contamination may be due to sampling method. No corrective action is recommended at this time. Resample at the next service interval to monitor.

### Wear

Moderate concentration of visible metal present. All component wear rates are normal.

### Contamination

The water content is negligible. There is no indication of any contamination in the oil.

### Fluid Condition

The AN level is acceptable for this fluid. The condition of the oil is suitable for further service.

## SAMPLE INFORMATION

| method        | limit/base      | current            | history1 | history2 |
|---------------|-----------------|--------------------|----------|----------|
| Sample Number | Client Info     | <b>RP0032292</b>   | ---      | ---      |
| Sample Date   | Client Info     | <b>13 Jul 2023</b> | ---      | ---      |
| Machine Age   | hrs Client Info | <b>0</b>           | ---      | ---      |
| Oil Age       | hrs Client Info | <b>0</b>           | ---      | ---      |
| Oil Changed   | Client Info     | <b>N/A</b>         | ---      | ---      |
| Sample Status |                 | <b>ABNORMAL</b>    | ---      | ---      |

## WEAR METALS

| method                   | limit/base | current      | history1 | history2 |
|--------------------------|------------|--------------|----------|----------|
| Iron ppm ASTM D5185m     | >20        | <b>&lt;1</b> | ---      | ---      |
| Chromium ppm ASTM D5185m | >20        | <b>0</b>     | ---      | ---      |
| Nickel ppm ASTM D5185m   | >20        | <b>&lt;1</b> | ---      | ---      |
| Titanium ppm ASTM D5185m |            | <b>0</b>     | ---      | ---      |
| Silver ppm ASTM D5185m   |            | <b>0</b>     | ---      | ---      |
| Aluminum ppm ASTM D5185m | >20        | <b>&lt;1</b> | ---      | ---      |
| Lead ppm ASTM D5185m     | >20        | <b>0</b>     | ---      | ---      |
| Copper ppm ASTM D5185m   | >20        | <b>0</b>     | ---      | ---      |
| Tin ppm ASTM D5185m      | >20        | <b>0</b>     | ---      | ---      |
| Vanadium ppm ASTM D5185m |            | <b>0</b>     | ---      | ---      |
| Cadmium ppm ASTM D5185m  |            | <b>0</b>     | ---      | ---      |

## ADDITIVES

| method                     | limit/base | current      | history1 | history2 |
|----------------------------|------------|--------------|----------|----------|
| Boron ppm ASTM D5185m      |            | <b>0</b>     | ---      | ---      |
| Barium ppm ASTM D5185m     |            | <b>2</b>     | ---      | ---      |
| Molybdenum ppm ASTM D5185m |            | <b>0</b>     | ---      | ---      |
| Manganese ppm ASTM D5185m  |            | <b>0</b>     | ---      | ---      |
| Magnesium ppm ASTM D5185m  | 90         | <b>102</b>   | ---      | ---      |
| Calcium ppm ASTM D5185m    |            | <b>2</b>     | ---      | ---      |
| Phosphorus ppm ASTM D5185m |            | <b>&lt;1</b> | ---      | ---      |
| Zinc ppm ASTM D5185m       |            | <b>0</b>     | ---      | ---      |

## CONTAMINANTS

| method                    | limit/base | current      | history1 | history2 |
|---------------------------|------------|--------------|----------|----------|
| Silicon ppm ASTM D5185m   | >15        | <b>1</b>     | ---      | ---      |
| Sodium ppm ASTM D5185m    |            | <b>0</b>     | ---      | ---      |
| Potassium ppm ASTM D5185m | >20        | <b>&lt;1</b> | ---      | ---      |
| Water % ASTM D6304        | >2         | <b>0.016</b> | ---      | ---      |
| ppm Water ppm ASTM D6304  |            | <b>164.6</b> | ---      | ---      |

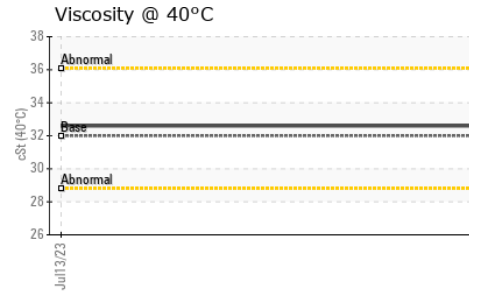
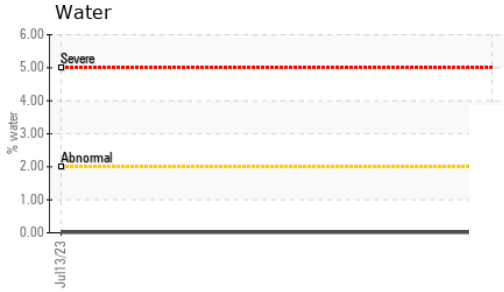
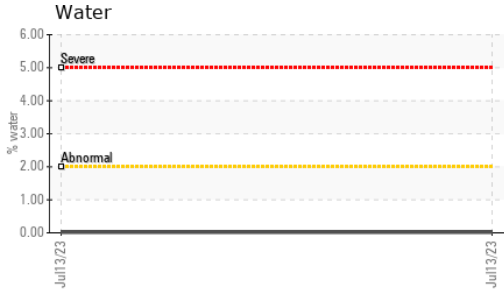
## FLUID DEGRADATION

| method                               | limit/base | current     | history1 | history2 |
|--------------------------------------|------------|-------------|----------|----------|
| Acid Number (AN) mg KOH/g ASTM D8045 |            | <b>0.38</b> | ---      | ---      |

## VISUAL

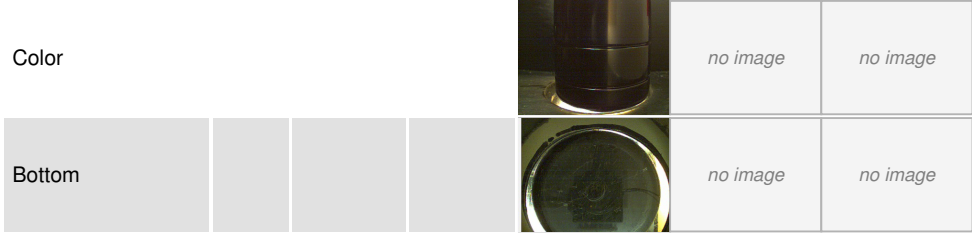
| method                          | limit/base | current        | history1 | history2 |
|---------------------------------|------------|----------------|----------|----------|
| White Metal scalar *Visual      | NONE       | <b>▲ MODER</b> | ---      | ---      |
| Yellow Metal scalar *Visual     | NONE       | <b>NONE</b>    | ---      | ---      |
| Precipitate scalar *Visual      | NONE       | <b>NONE</b>    | ---      | ---      |
| Silt scalar *Visual             | NONE       | <b>NONE</b>    | ---      | ---      |
| Debris scalar *Visual           | NONE       | <b>LIGHT</b>   | ---      | ---      |
| Sand/Dirt scalar *Visual        | NONE       | <b>NONE</b>    | ---      | ---      |
| Appearance scalar *Visual       | NORML      | <b>NORML</b>   | ---      | ---      |
| Odor scalar *Visual             | NORML      | <b>NORML</b>   | ---      | ---      |
| Emulsified Water scalar *Visual | >2         | <b>NEG</b>     | ---      | ---      |
| Free Water scalar *Visual       |            | <b>NEG</b>     | ---      | ---      |

# OIL ANALYSIS REPORT

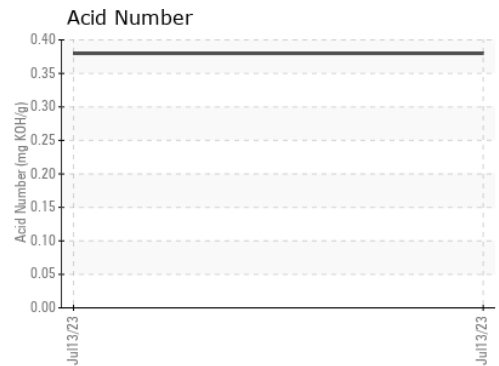
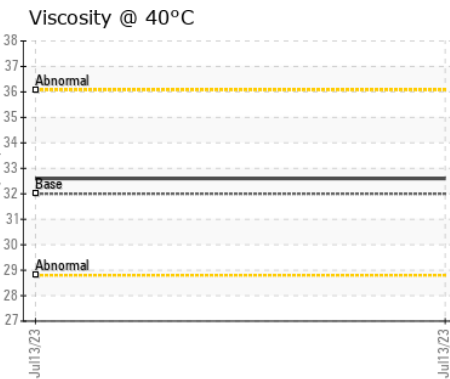
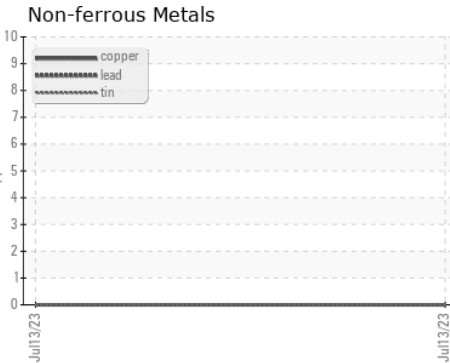
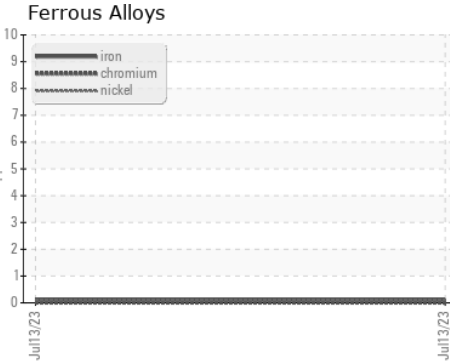


| FLUID PROPERTIES |     | method    | limit/base | current     | history1 | history2 |
|------------------|-----|-----------|------------|-------------|----------|----------|
| Visc @ 40°C      | cSt | ASTM D445 | 32         | <b>32.6</b> | ---      | ---      |

| SAMPLE IMAGES |  | method | limit/base | current | history1 | history2 |
|---------------|--|--------|------------|---------|----------|----------|
| Color         |  |        |            |         | no image | no image |
| Bottom        |  |        |            |         | no image | no image |



## GRAPHS



Certificate L2367

**Laboratory** : WearCheck USA - 501 Madison Ave., Cary, NC 27513  
**Sample No.** : RP0032292 **Received** : 14 Jul 2023  
**Lab Number** : **05898662** **Diagnosed** : 18 Jul 2023  
**Unique Number** : 10560018 **Diagnostician** : Jonathan Hester  
**Test Package** : IND 2 ( Additional Tests: PrtCount )

**ENERGY TRANSFER - JOHNSONS CORNER**  
 10822 HWY 73  
 WATFORD CITY, ND  
 US 58854  
 Contact: Service Manager

To discuss this sample report, contact Customer Service at 1-800-237-1369.

\* - Denotes test methods that are outside of the ISO 17025 scope of accreditation.

Statements of conformity to specifications are based on the simple acceptance decision rule (JCGM 106:2012)

T:  
F: