



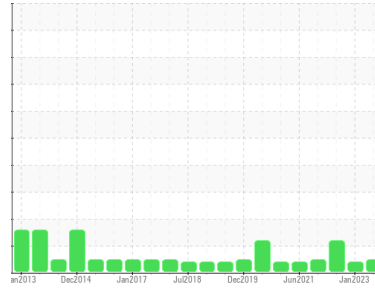
# OIL ANALYSIS REPORT

Sample Rating Trend

**NORMAL**



Area  
**[603777348 SR]**  
 Machine Id  
**1 SLATE CONV PRI (S/N 20058862)**  
 Component  
**Gearbox**  
 Fluid  
**GEAR OIL ISO 460 (--- GAL)**



## DIAGNOSIS

- Recommendation**  
 Resample at the next service interval to monitor.
- Wear**  
 All component wear rates are normal.
- Contamination**  
 There is no indication of any contamination in the oil.
- Fluid Condition**  
 The AN level is acceptable for this fluid. The condition of the oil is suitable for further service.

SAMPLE INFORMATION		method	limit/base	current	history1	history2
Sample Number	Client Info			<b>WC0605458</b>	WC0605362	WC0605687
Sample Date	Client Info			<b>16 Jun 2023</b>	17 Jan 2023	23 Jun 2022
Machine Age	hrs Client Info			<b>0</b>	0	0
Oil Age	hrs Client Info			<b>0</b>	0	0
Oil Changed	Client Info			<b>Not Changed</b>	Changed	Not Changed
Sample Status				<b>NORMAL</b>	ATTENTION	ABNORMAL

WEAR METALS		method	limit/base	current	history1	history2
Iron	ppm ASTM D5185m	>200		<b>41</b>	90	▲ 81
Chromium	ppm ASTM D5185m	>15		<b>&lt;1</b>	2	1
Nickel	ppm ASTM D5185m	>15		<b>0</b>	1	0
Titanium	ppm ASTM D5185m			<b>0</b>	0	0
Silver	ppm ASTM D5185m			<b>0</b>	0	<1
Aluminum	ppm ASTM D5185m	>25		<b>2</b>	0	<1
Lead	ppm ASTM D5185m	>100		<b>0</b>	0	<1
Copper	ppm ASTM D5185m	>200		<b>&lt;1</b>	0	<1
Tin	ppm ASTM D5185m	>25		<b>0</b>	0	0
Antimony	ppm ASTM D5185m	>5		<b>---</b>	---	---
Vanadium	ppm ASTM D5185m			<b>0</b>	0	0
Cadmium	ppm ASTM D5185m			<b>0</b>	0	0

ADDITIVES		method	limit/base	current	history1	history2
Boron	ppm ASTM D5185m	50		<b>2</b>	11	4
Barium	ppm ASTM D5185m	15		<b>6</b>	12	20
Molybdenum	ppm ASTM D5185m	15		<b>0</b>	0	0
Manganese	ppm ASTM D5185m			<b>&lt;1</b>	<1	<1
Magnesium	ppm ASTM D5185m	50		<b>&lt;1</b>	0	0
Calcium	ppm ASTM D5185m	50		<b>14</b>	1	<1
Phosphorus	ppm ASTM D5185m	350		<b>153</b>	122	89
Zinc	ppm ASTM D5185m	100		<b>4</b>	1	5
Sulfur	ppm ASTM D5185m	12500		<b>2124</b>	1769	1603

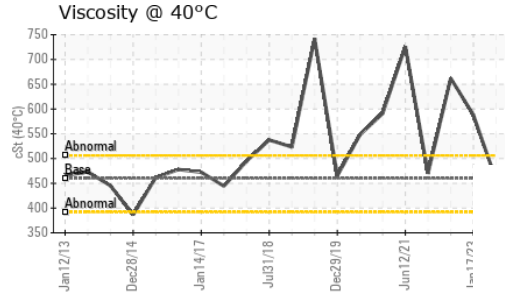
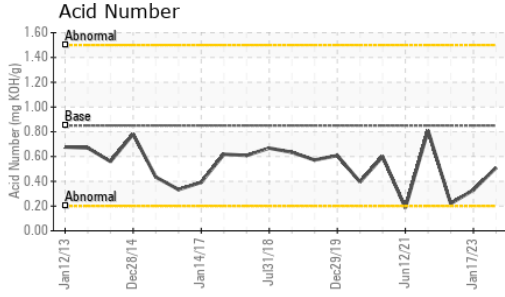
CONTAMINANTS		method	limit/base	current	history1	history2
Silicon	ppm ASTM D5185m	>50		<b>3</b>	2	0
Sodium	ppm ASTM D5185m			<b>0</b>	3	1
Potassium	ppm ASTM D5185m	>20		<b>2</b>	4	3

FLUID DEGRADATION		method	limit/base	current	history1	history2
Acid Number (AN)	mg KOH/g ASTM D8045	0.85		<b>0.51</b>	0.33	0.22

VISUAL		method	limit/base	current	history1	history2
White Metal	scalar *Visual	NONE		<b>NONE</b>	NONE	NONE
Yellow Metal	scalar *Visual	NONE		<b>NONE</b>	NONE	NONE
Precipitate	scalar *Visual	NONE		<b>NONE</b>	NONE	NONE
Silt	scalar *Visual	NONE		<b>NONE</b>	NONE	NONE
Debris	scalar *Visual	NONE		<b>NONE</b>	NONE	NONE
Sand/Dirt	scalar *Visual	NONE		<b>NONE</b>	NONE	NONE
Appearance	scalar *Visual	NORML		<b>NORML</b>	NORML	NORML
Odor	scalar *Visual	NORML		<b>NORML</b>	NORML	NORML
Emulsified Water	scalar *Visual	>0.2		<b>NEG</b>	NEG	NEG
Free Water	scalar *Visual			<b>NEG</b>	NEG	NEG



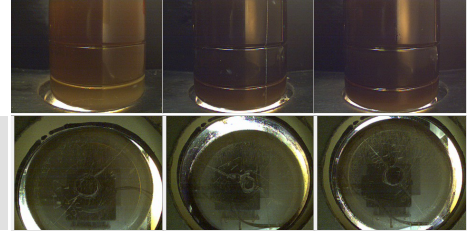
# OIL ANALYSIS REPORT



FLUID PROPERTIES		method	limit/base	current	history1	history2
Visc @ 40°C	cSt	ASTM D445	460	457	▲ 588	▲ 662

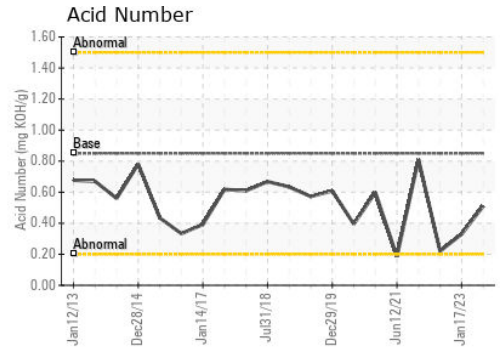
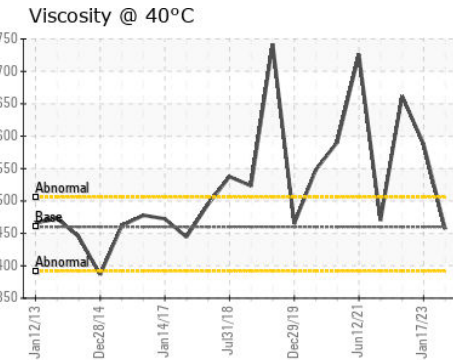
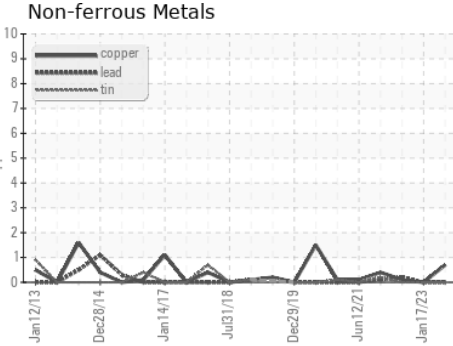
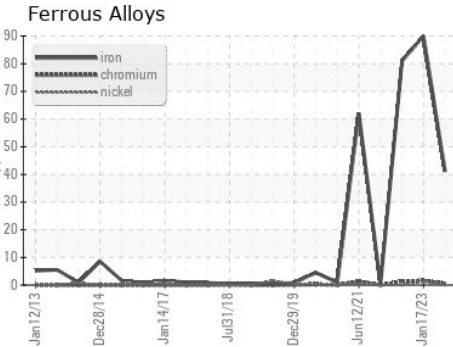
SAMPLE IMAGES		method	limit/base	current	history1	history2
---------------	--	--------	------------	---------	----------	----------

Color



Bottom

## GRAPHS



Certificate L2367

**Laboratory** : WearCheck USA - 501 Madison Ave., Cary, NC 27513  
**Sample No.** : WC0605458 **Received** : 18 Jul 2023  
**Lab Number** : 05901392 **Diagnosed** : 20 Jul 2023  
**Unique Number** : 10562748 **Diagnostician** : Don Baldrige  
**Test Package** : IND 2

**MARS CHOCOLATE**  
 2019 NORTH OAK PARK  
 CHICAGO, IL  
 US 60707  
 Contact: TONY FIORE  
 tony.fiore@effem.com  
 T: (773)745-2279  
 F:

To discuss this sample report, contact Customer Service at 1-800-237-1369.

\* - Denotes test methods that are outside of the ISO 17025 scope of accreditation.

Statements of conformity to specifications are based on the simple acceptance decision rule (JCGM 106:2012)