



PROBLEM SUMMARY

Area
[181798-N2STV4W]
 Machine Id
CHATSWORTH
 Component
Hydraulic System
 Fluid
SHELL TELLUS (--- GAL)

Sample Rating Trend



VISUAL METAL



COMPONENT CONDITION SUMMARY

No relevant graphs to display

RECOMMENDATION

We recommend you service the filters on this component. We advise that you inspect for possible wear. Resample at the next service interval to monitor. We were unable to perform a particle count due to metal particles present in this sample.

PROBLEMATIC TEST RESULTS

Sample Status				ABNORMAL	---	---
White Metal	scalar	*Visual	NONE	▲ MODER	---	---
PrtFilter					no image	no image

Customer Id: EXPHAM
Sample No.: PH05903229
Lab Number: 05903229
Test Package: PLANT



To manage this report scan the QR code

To discuss the diagnosis or test data:
 Jonathan Hester +1 919-379-4092 x4092
jhester@wearcheckusa.com

To change component or sample information:
 Customer Service +1 1-800-237-1369
customerservice@wearcheck.com

RECOMMENDED ACTIONS

Action	Status	Date	Done By	Description
Inspect Wear Source	---	---	?	We advise that you inspect for the source(s) of wear.
Change Filter	---	---	?	We recommend you service the filters on this component.
Alert	---	---	?	We were unable to perform a particle count due to metal particles present in this sample.

HISTORICAL DIAGNOSIS



OIL ANALYSIS REPORT

Sample Rating Trend

VISUAL METAL

Area
[181798-N2STV4W]
 Machine Id
CHATSWORTH
 Component
Hydraulic System
 Fluid
SHELL TELLUS (--- GAL)



DIAGNOSIS

Recommendation

We recommend you service the filters on this component. We advise that you inspect for possible wear. Resample at the next service interval to monitor. We were unable to perform a particle count due to metal particles present in this sample.

Wear

Moderate concentration of visible metal present. All component wear rates are normal.

Contamination

There is no indication of any contamination in the oil.

Fluid Condition

The AN level is acceptable for this fluid.

SAMPLE INFORMATION

method	limit/base	current	history1	history2
Sample Number	Client Info	PH05903229	---	---
Sample Date	Client Info	13 Jul 2023	---	---
Machine Age	hrs Client Info	0	---	---
Oil Age	hrs Client Info	0	---	---
Oil Changed	Client Info	N/A	---	---
Sample Status		ABNORMAL	---	---

WEAR METALS

method	limit/base	current	history1	history2
Iron ppm ASTM D5185m	>20	16	---	---
Chromium ppm ASTM D5185m	>20	0	---	---
Nickel ppm ASTM D5185m	>20	0	---	---
Titanium ppm ASTM D5185m		0	---	---
Silver ppm ASTM D5185m		<1	---	---
Aluminum ppm ASTM D5185m	>20	0	---	---
Lead ppm ASTM D5185m	>20	<1	---	---
Copper ppm ASTM D5185m	>20	8	---	---
Tin ppm ASTM D5185m	>20	<1	---	---
Vanadium ppm ASTM D5185m		0	---	---
Cadmium ppm ASTM D5185m		2	---	---

ADDITIVES

method	limit/base	current	history1	history2
Boron ppm ASTM D5185m		0	---	---
Barium ppm ASTM D5185m		1	---	---
Molybdenum ppm ASTM D5185m		0	---	---
Manganese ppm ASTM D5185m		<1	---	---
Magnesium ppm ASTM D5185m		1	---	---
Calcium ppm ASTM D5185m		21	---	---
Phosphorus ppm ASTM D5185m		286	---	---
Zinc ppm ASTM D5185m		285	---	---
Sulfur ppm ASTM D5185m		2062	---	---

CONTAMINANTS

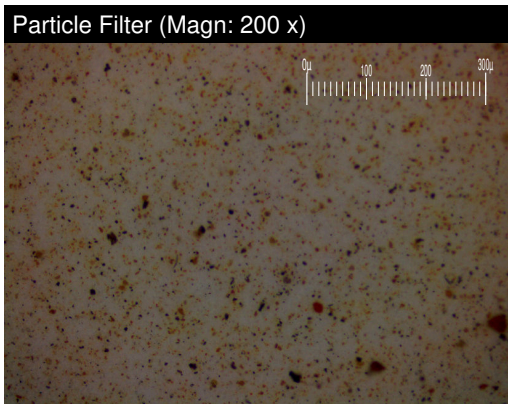
method	limit/base	current	history1	history2
Silicon ppm ASTM D5185m	>15	0	---	---
Sodium ppm ASTM D5185m		0	---	---
Potassium ppm ASTM D5185m	>20	<1	---	---

FLUID DEGRADATION

method	limit/base	current	history1	history2
Acid Number (AN) mg KOH/g ASTM D8045		0.36	---	---

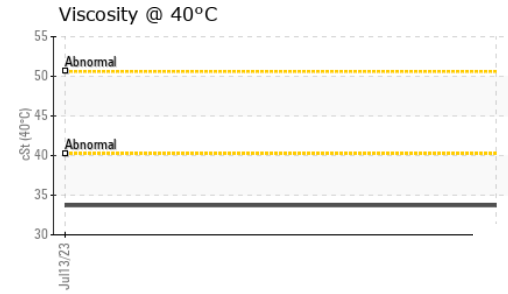
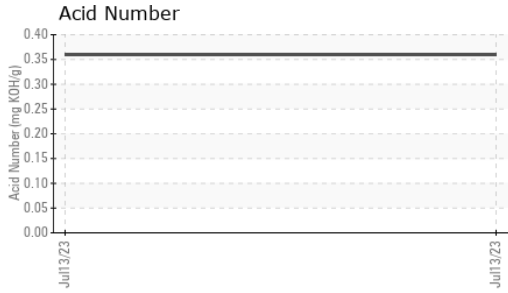
VISUAL

method	limit/base	current	history1	history2
White Metal scalar *Visual	NONE	▲ MODER	---	---
Yellow Metal scalar *Visual	NONE	NONE	---	---
Precipitate scalar *Visual	NONE	NONE	---	---
Silt scalar *Visual	NONE	NONE	---	---
Debris scalar *Visual	NONE	LIGHT	---	---
Sand/Dirt scalar *Visual	NONE	NONE	---	---
Appearance scalar *Visual	NORML	NORML	---	---
Odor scalar *Visual	NORML	NORML	---	---
Emulsified Water scalar *Visual	>0.05	NEG	---	---
Free Water scalar *Visual		NEG	---	---





OIL ANALYSIS REPORT

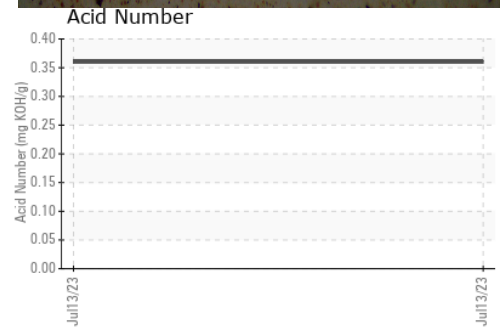
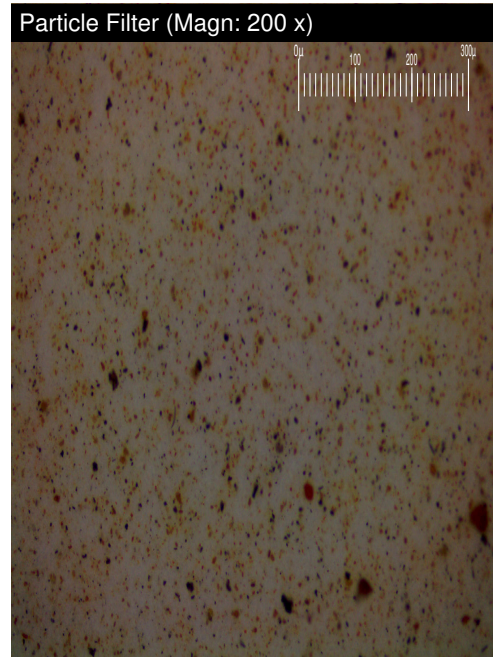
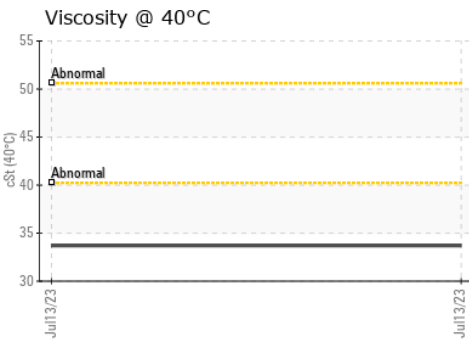
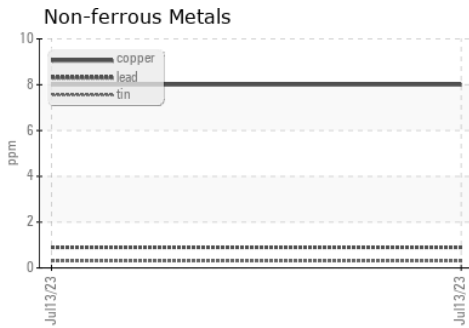
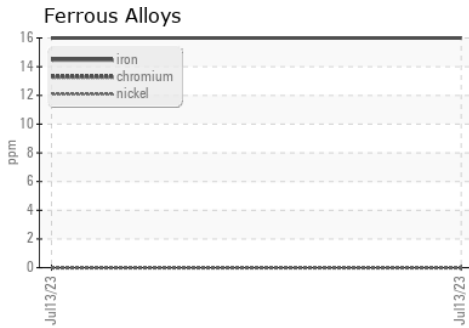


FLUID PROPERTIES	method	limit/base	current	history1	history2
Visc @ 40°C	cSt	ASTM D445	33.7	---	---

SAMPLE IMAGES	method	limit/base	current	history1	history2
---------------	--------	------------	---------	----------	----------

Color		no image	no image
Bottom		no image	no image
PrtFilter		no image	no image

GRAPHS



Certificate L2367

Laboratory : WearCheck USA - 501 Madison Ave., Cary, NC 27513
 Sample No. : PH05903229 Received : 20 Jul 2023
 Lab Number : 05903229 Diagnosed : 24 Jul 2023
 Unique Number : 10564585 Diagnostician : Jonathan Hester
 Test Package : PLANT (Additional Tests: PrtFilter, PrtFilterPic)

To discuss this sample report, contact Customer Service at 1-800-237-1369.

* - Denotes test methods that are outside of the ISO 17025 scope of accreditation.

Statements of conformity to specifications are based on the simple acceptance decision rule (JCGM 106:2012)

EXPLORER PIPELINE

3721 MICHIGAN ST
 HAMMOND, IN
 US 46323

Contact: RANDY KNEPPER
 rknepper@expl.com

T: (219)619-0180

F: