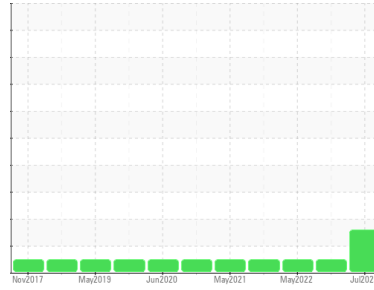




PROBLEM SUMMARY

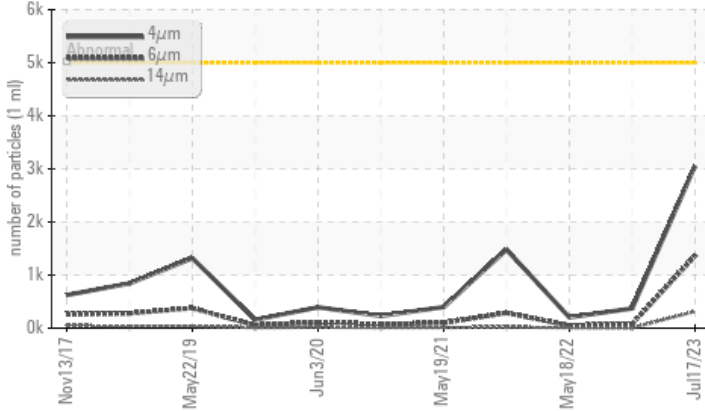
Area
PARTS
 Machine Id
ACCU PRESS PRT-PBR-10 (S/N 8579)
 Component
Hydraulic System
 Fluid
CASTROL HYSPIN AWH-M ISO 46 (55 GAL)

Sample Rating Trend



COMPONENT CONDITION SUMMARY

▲ Particle Trend



RECOMMENDATION

We recommend you service the filters on this component. Resample at the next service interval to monitor.

PROBLEMATIC TEST RESULTS

Sample Status			ABNORMAL	NORMAL	NORMAL
Particles >6µm	ASTM D7647	>1300	▲ 1363	79	50
Particles >14µm	ASTM D7647	>160	▲ 314	3	9
Particles >21µm	ASTM D7647	>40	▲ 110	1	4
Oil Cleanliness	ISO 4406 (c)	>19/17/14	▲ 19/18/15	16/13/9	15/13/10

Customer Id: LANNEW
 Sample No.: WC0830449
 Lab Number: 05903233
 Test Package: PLANT



To manage this report scan the QR code

To discuss the diagnosis or test data:
 Angela Borella +1 800-237-1369
angela.borella@wearcheckusa.com

To change component or sample information:
 Customer Service +1 1-800-237-1369
customerservice@wearcheck.com

RECOMMENDED ACTIONS

Action	Status	Date	Done By	Description
Change Filter	---	---	?	We recommend you service the filters on this component.

HISTORICAL DIAGNOSIS

04 Dec 2022 Diag: Jonathan Hester

NORMAL



Resample at the next service interval to monitor. All component wear rates are normal. The amount and size of particulates present in the system are acceptable. There is no indication of any contamination in the oil. The AN level is acceptable for this fluid. The condition of the oil is suitable for further service.

view report



18 May 2022 Diag: Doug Bogart

NORMAL



Resample at the next service interval to monitor. All component wear rates are normal. The amount and size of particulates present in the system are acceptable. There is no indication of any contamination in the oil. The AN level is acceptable for this fluid. The condition of the oil is suitable for further service.

view report



03 Dec 2021 Diag: Don Baldrige

NORMAL



Resample at the next service interval to monitor. All component wear rates are normal. There is no indication of any contamination in the component. The amount and size of particulates present in the system is acceptable. The AN level is acceptable for this fluid. The condition of the oil is suitable for further service.

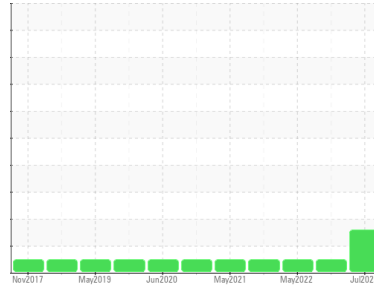
view report





OIL ANALYSIS REPORT

Sample Rating Trend



ISO



Area
PARTS
Machine Id
ACCU PRESS PRT-PBR-10 (S/N 8579)
Component
Hydraulic System
Fluid
CASTROL HYPIN AWH-M ISO 46 (55 GAL)

DIAGNOSIS

Recommendation

We recommend you service the filters on this component. Resample at the next service interval to monitor.

Wear

All component wear rates are normal.

Contamination

There is a high amount of particulates present in the oil.

Fluid Condition

The AN level is acceptable for this fluid. The condition of the oil is acceptable for the time in service.

SAMPLE INFORMATION

	method	limit/base	current	history1	history2
Sample Number	Client Info		WC0830449	WC0753864	WC0696332
Sample Date	Client Info		17 Jul 2023	04 Dec 2022	18 May 2022
Machine Age	hrs	Client Info	0	0	0
Oil Age	hrs	Client Info	0	0	0
Oil Changed	Client Info		N/A	N/A	N/A
Sample Status			ABNORMAL	NORMAL	NORMAL

WEAR METALS

	method	limit/base	current	history1	history2
Iron	ppm	ASTM D5185m >20	0	0	0
Chromium	ppm	ASTM D5185m >20	0	0	0
Nickel	ppm	ASTM D5185m >20	0	0	0
Titanium	ppm	ASTM D5185m	0	0	0
Silver	ppm	ASTM D5185m	<1	0	<1
Aluminum	ppm	ASTM D5185m >20	0	0	0
Lead	ppm	ASTM D5185m >20	0	0	0
Copper	ppm	ASTM D5185m >20	<1	<1	<1
Tin	ppm	ASTM D5185m >20	0	0	0
Antimony	ppm	ASTM D5185m	---	---	---
Vanadium	ppm	ASTM D5185m	0	0	0
Cadmium	ppm	ASTM D5185m	0	0	0

ADDITIVES

	method	limit/base	current	history1	history2
Boron	ppm	ASTM D5185m	0	0	0
Barium	ppm	ASTM D5185m	1	0	0
Molybdenum	ppm	ASTM D5185m	0	0	0
Manganese	ppm	ASTM D5185m	0	0	0
Magnesium	ppm	ASTM D5185m	<1	0	0
Calcium	ppm	ASTM D5185m	44	44	45
Phosphorus	ppm	ASTM D5185m	391	391	397
Zinc	ppm	ASTM D5185m	517	501	498
Sulfur	ppm	ASTM D5185m	2293	2322	1723

CONTAMINANTS

	method	limit/base	current	history1	history2
Silicon	ppm	ASTM D5185m >15	<1	0	1
Sodium	ppm	ASTM D5185m	0	0	0
Potassium	ppm	ASTM D5185m >20	<1	0	0

FLUID CLEANLINESS

	method	limit/base	current	history1	history2
Particles >4µm	ASTM D7647	>5000	3054	371	204
Particles >6µm	ASTM D7647	>1300	▲ 1363	79	50
Particles >14µm	ASTM D7647	>160	▲ 314	3	9
Particles >21µm	ASTM D7647	>40	▲ 110	1	4
Particles >38µm	ASTM D7647	>10	8	0	0
Particles >71µm	ASTM D7647	>3	1	0	0
Oil Cleanliness	ISO 4406 (c)	>19/17/14	▲ 19/18/15	16/13/9	15/13/10

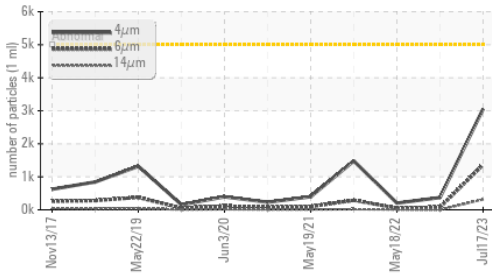
FLUID DEGRADATION

	method	limit/base	current	history1	history2
Acid Number (AN)	mg KOH/g	ASTM D8045	0.40	0.40	0.39

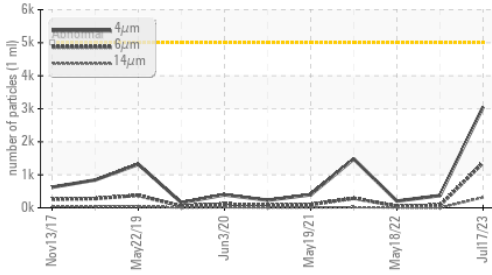


OIL ANALYSIS REPORT

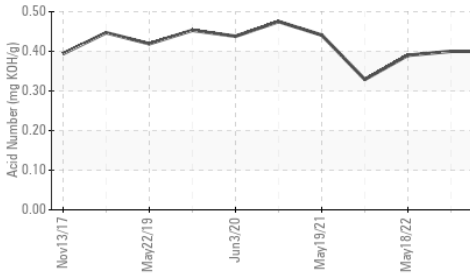
▲ Particle Trend



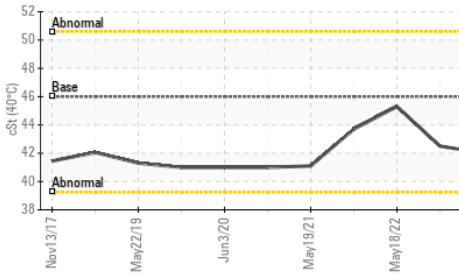
▲ Particle Trend



Acid Number



Viscosity @ 40°C

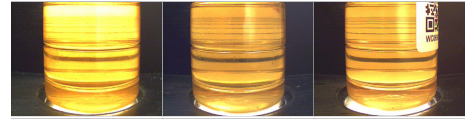


VISUAL	method	limit/base	current	history1	history2
White Metal	scalar	*Visual	NONE	NONE	NONE
Yellow Metal	scalar	*Visual	NONE	NONE	NONE
Precipitate	scalar	*Visual	NONE	NONE	NONE
Silt	scalar	*Visual	NONE	NONE	NONE
Debris	scalar	*Visual	NONE	NONE	VLITE
Sand/Dirt	scalar	*Visual	NONE	NONE	NONE
Appearance	scalar	*Visual	NORML	NORML	NORML
Odor	scalar	*Visual	NORML	NORML	NORML
Emulsified Water	scalar	*Visual	>0.05	NEG	NEG
Free Water	scalar	*Visual		NEG	NEG

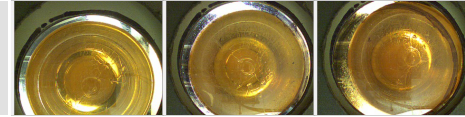
FLUID PROPERTIES	method	limit/base	current	history1	history2
Visc @ 40°C	cSt	ASTM D445	46.0	42.0	42.5

SAMPLE IMAGES	method	limit/base	current	history1	history2
---------------	--------	------------	---------	----------	----------

Color

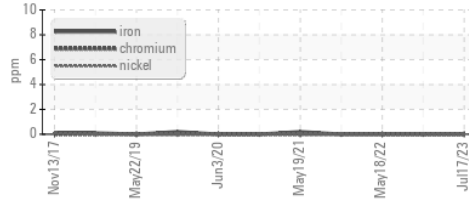


Bottom

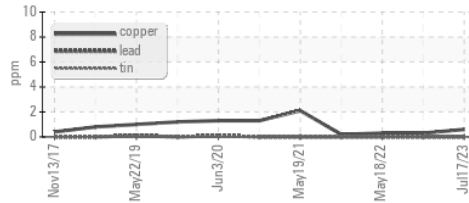


GRAPHS

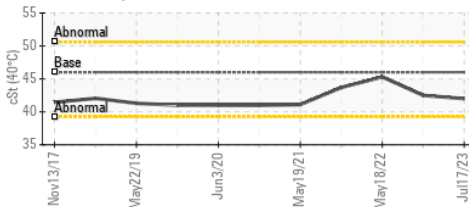
Ferrous Alloys



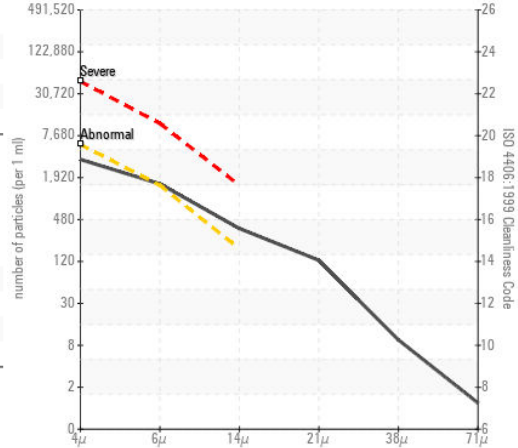
Non-ferrous Metals



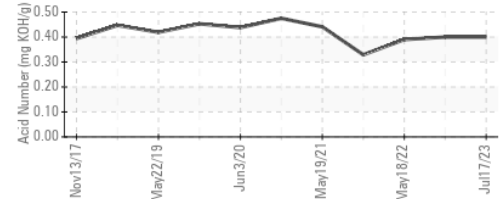
Viscosity @ 40°C



▲ Particle Count



Acid Number



Certificate L2367

Laboratory : WearCheck USA - 501 Madison Ave., Cary, NC 27513
 Sample No. : WC0830449
 Lab Number : 05903233
 Unique Number : 10564589
 Test Package : PLANT

Received : 20 Jul 2023
 Diagnosed : 24 Jul 2023
 Diagnostician : Angela Borella

LUND BOATS
 318 WEST GILMAN ST
 NEW YORK MILLS, MN
 US 56567
 Contact: TODD PITMAN
 todd.pitman@lundboats.com

To discuss this sample report, contact Customer Service at 1-800-237-1369.

* - Denotes test methods that are outside of the ISO 17025 scope of accreditation.

Statements of conformity to specifications are based on the simple acceptance decision rule (JCGM 106:2012)

T:
F: