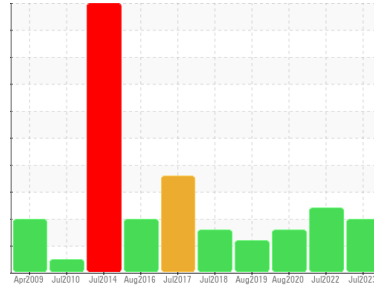




PROBLEM SUMMARY

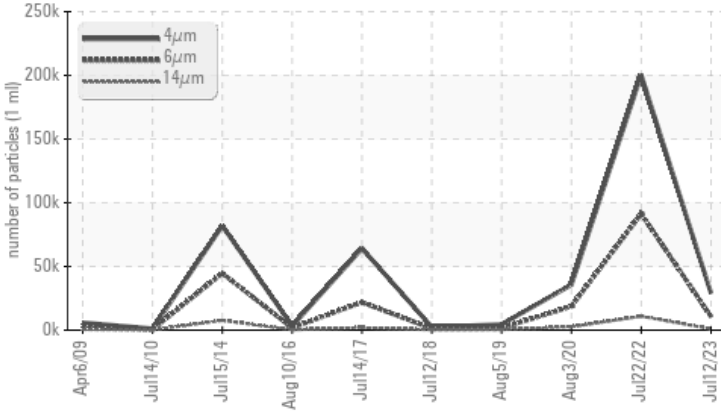
Sample Rating Trend



Machine Id
KAESER SM 11 1070
 Component
Compressor
 Fluid
KAESER SIGMA (OEM) S-460 (--- GAL)

COMPONENT CONDITION SUMMARY

▲ Particle Trend



RECOMMENDATION

No corrective action is recommended at this time. Oil and filter change at the time of sampling has been noted. Resample at the next service interval to monitor.

PROBLEMATIC TEST RESULTS

Sample Status			ABNORMAL	ABNORMAL	ABNORMAL
Particles >6µm	ASTM D7647	>1300	▲ 10602	▲ 91360	▲ 18634
Particles >14µm	ASTM D7647	>80	▲ 906	▲ 10940	▲ 2642
Particles >21µm	ASTM D7647	>20	▲ 182	▲ 2875	▲ 607
Particles >38µm	ASTM D7647	>4	▲ 5	▲ 115	▲ 11
Oil Cleanliness	ISO 4406 (c)	>--/17/13	▲ 22/21/17	▲ 25/24/21	▲ 21/19

Customer Id: DAKNOR
 Sample No.: KC110523
 Lab Number: 05903293
 Test Package: IND 2



To manage this report scan the QR code

To discuss the diagnosis or test data:
 Don Baldrige +1
don.b505@comcast.net

To change component or sample information:
 Customer Service +1 1-800-237-1369
customerservice@wearcheck.com

RECOMMENDED ACTIONS

Action	Status	Date	Done By	Description
Change Fluid	---	---	?	Oil and filter change at the time of sampling has been noted.
Change Filter	---	---	?	Oil and filter change at the time of sampling has been noted.

HISTORICAL DIAGNOSIS

22 Jul 2022 Diag: Don Baldrige

ISO



No corrective action is recommended at this time. The filter change at the time of sampling has been noted. Resample at the next service interval to monitor. All component wear rates are normal. There is a high amount of particulates present in the oil. The AN level is acceptable for this fluid. The condition of the oil is suitable for further service.

view report



03 Aug 2020 Diag: Don Baldrige

ISO



No corrective action is recommended at this time. Oil and filter change at the time of sampling has been noted. Resample at the next service interval to monitor. All component wear rates are normal. There is a high amount of particulates present in the oil. The AN level is acceptable for this fluid. The condition of the oil is suitable for further service.

view report



05 Aug 2019 Diag: Angela Borella

ISO



Oil and filter change at the time of sampling has been noted. Resample at the next service interval to monitor. All component wear rates are normal. There is a high amount of particulates present in the oil. The AN level is acceptable for this fluid. The condition of the oil is suitable for further service.

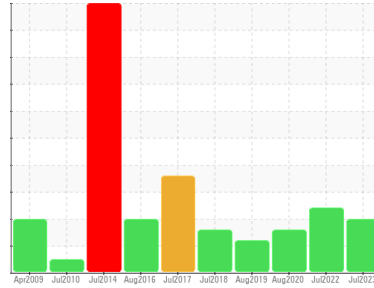
view report





OIL ANALYSIS REPORT

Sample Rating Trend



Machine Id
KAESER SM 11 1070
 Component
Compressor
 Fluid
KAESER SIGMA (OEM) S-460 (--- GAL)

DIAGNOSIS

Recommendation
 No corrective action is recommended at this time. Oil and filter change at the time of sampling has been noted. Resample at the next service interval to monitor.

Wear
 All component wear rates are normal.

Contamination
 There is a high amount of particulates present in the oil.

Fluid Condition
 The AN level is acceptable for this fluid. The condition of the oil is suitable for further service.

SAMPLE INFORMATION

method	limit/base	current	history1	history2
Sample Number	Client Info	KC110523	KC102958	KC85389
Sample Date	Client Info	12 Jul 2023	22 Jul 2022	03 Aug 2020
Machine Age	hrs	44886	43924	43014
Oil Age	hrs	1872	910	1500
Oil Changed	Client Info	Changed	Not Changd	Changed
Sample Status		ABNORMAL	ABNORMAL	ABNORMAL

WEAR METALS

method	limit/base	current	history1	history2	
Iron	ppm	ASTM D5185m >50	<1	<1	2
Chromium	ppm	ASTM D5185m >10	0	0	0
Nickel	ppm	ASTM D5185m >3	0	0	<1
Titanium	ppm	ASTM D5185m >3	0	0	<1
Silver	ppm	ASTM D5185m >2	<1	0	0
Aluminum	ppm	ASTM D5185m >10	0	<1	<1
Lead	ppm	ASTM D5185m >10	0	0	0
Copper	ppm	ASTM D5185m >50	2	1	2
Tin	ppm	ASTM D5185m >10	0	<1	0
Antimony	ppm	ASTM D5185m	---	---	0
Vanadium	ppm	ASTM D5185m	0	0	0
Cadmium	ppm	ASTM D5185m	0	0	0

ADDITIVES

method	limit/base	current	history1	history2	
Boron	ppm	ASTM D5185m	0	0	<1
Barium	ppm	ASTM D5185m 90	1	4	0
Molybdenum	ppm	ASTM D5185m	0	0	0
Manganese	ppm	ASTM D5185m	0	<1	<1
Magnesium	ppm	ASTM D5185m 90	47	59	38
Calcium	ppm	ASTM D5185m 2	0	<1	<1
Phosphorus	ppm	ASTM D5185m	0	1	0
Zinc	ppm	ASTM D5185m	6	6	16

CONTAMINANTS

method	limit/base	current	history1	history2	
Silicon	ppm	ASTM D5185m >25	0	<1	2
Sodium	ppm	ASTM D5185m	4	14	8
Potassium	ppm	ASTM D5185m >20	2	0	13
Water	%	ASTM D6304 >0.05	0.024	0.038	0.025
ppm Water	ppm	ASTM D6304 >500	246.6	385.5	255.2

FLUID CLEANLINESS

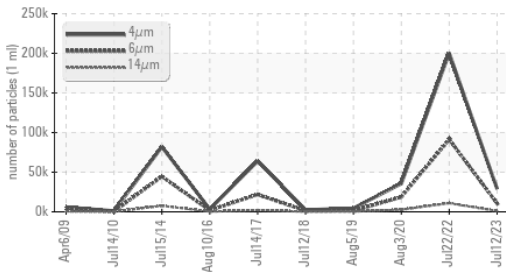
method	limit/base	current	history1	history2
Particles >4µm	ASTM D7647	29120	200360	35604
Particles >6µm	ASTM D7647 >1300	▲ 10602	▲ 91360	▲ 18634
Particles >14µm	ASTM D7647 >80	▲ 906	▲ 10940	▲ 2642
Particles >21µm	ASTM D7647 >20	▲ 182	▲ 2875	▲ 607
Particles >38µm	ASTM D7647 >4	▲ 5	▲ 115	▲ 11
Particles >71µm	ASTM D7647 >3	0	▲ 6	0
Oil Cleanliness	ISO 4406 (c) >--/17/13	▲ 22/21/17	▲ 25/24/21	▲ 21/19

FLUID DEGRADATION

method	limit/base	current	history1	history2	
Acid Number (AN)	mg KOH/g	ASTM D8045 0.4	0.37	0.41	0.378

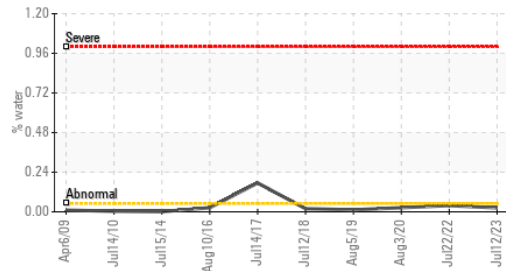
OIL ANALYSIS REPORT

Particle Trend



VISUAL	method	limit/base	current	history1	history2
White Metal	scalar	*Visual	NONE	NONE	NONE
Yellow Metal	scalar	*Visual	NONE	NONE	NONE
Precipitate	scalar	*Visual	NONE	NONE	NONE
Silt	scalar	*Visual	NONE	NONE	NONE
Debris	scalar	*Visual	NONE	LIGHT	LIGHT
Sand/Dirt	scalar	*Visual	NONE	NONE	NONE
Appearance	scalar	*Visual	NORML	NORML	NORML
Odor	scalar	*Visual	NORML	NORML	NORML
Emulsified Water	scalar	*Visual	>0.05	NEG	NEG
Free Water	scalar	*Visual		NEG	NEG

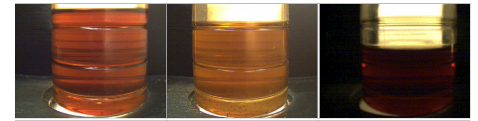
Water



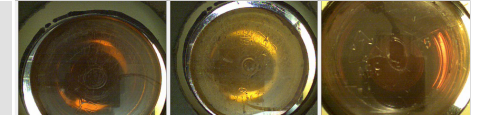
FLUID PROPERTIES	method	limit/base	current	history1	history2
Visc @ 40°C	cSt	ASTM D445	46	44.1	44.0

SAMPLE IMAGES	method	limit/base	current	history1	history2
---------------	--------	------------	---------	----------	----------

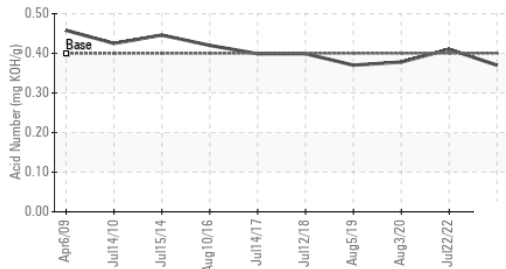
Color



Bottom

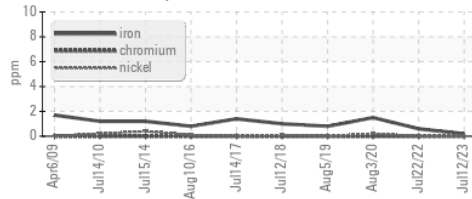


Acid Number

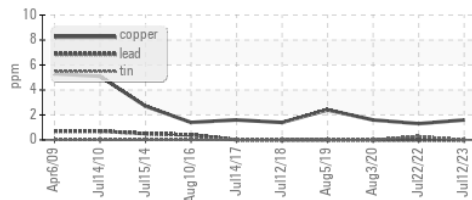


GRAPHS

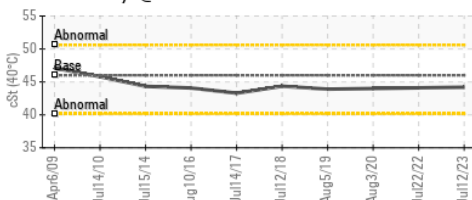
Ferrous Alloys



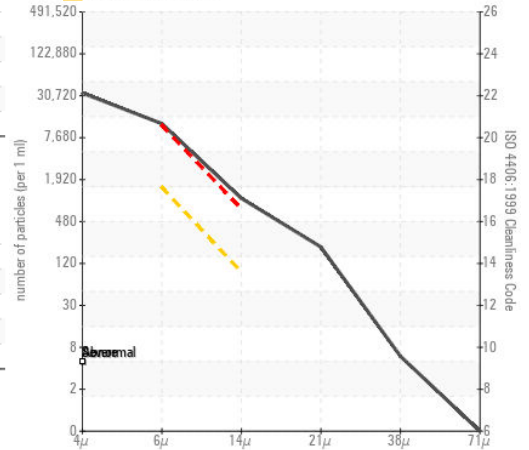
Non-ferrous Metals



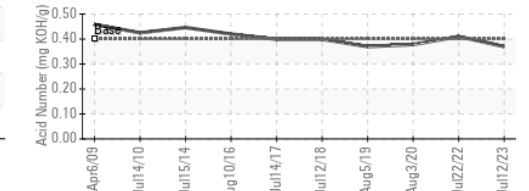
Viscosity @ 40°C



Particle Count



Acid Number



Certificate L2367

Laboratory : WearCheck USA - 501 Madison Ave., Cary, NC 27513
 Sample No. : KC110523
 Lab Number : 05903293
 Unique Number : 10564649
 Test Package : IND 2

DAKU AUROBODY
 1135 HOWERTOWN ROAD
 N. CATASAUQA, PA
 US 18032
 Contact: SERVICE MANAGER

To discuss this sample report, contact Customer Service at 1-800-237-1369.

* - Denotes test methods that are outside of the ISO 17025 scope of accreditation.

Statements of conformity to specifications are based on the simple acceptance decision rule (JCGM 106:2012)

T:
F: