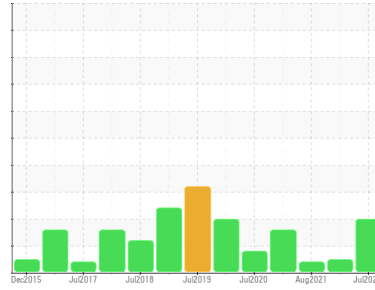


PROBLEM SUMMARY

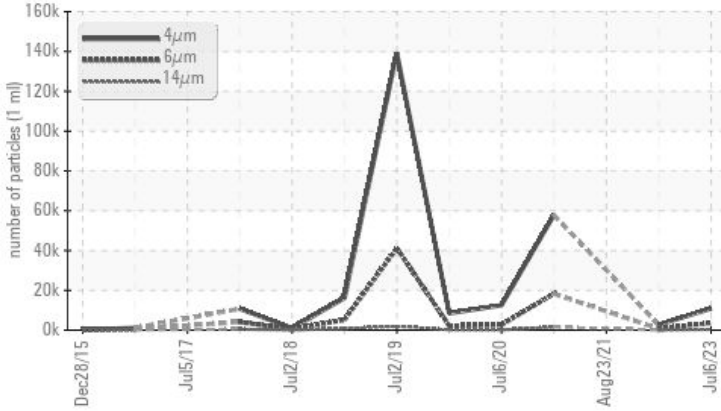
Sample Rating Trend



Machine Id
KAESER CSD 75 5296058 (S/N 1142)
Component
Compressor
Fluid
KAESER SIGMA (OEM) S-460 (--- GAL)

COMPONENT CONDITION SUMMARY

▲ Particle Trend



RECOMMENDATION

No corrective action is recommended at this time. The filter change at the time of sampling has been noted. Resample at the next service interval to monitor.

PROBLEMATIC TEST RESULTS

Sample Status			ABNORMAL	NORMAL	ABNORMAL
Particles >6µm	ASTM D7647	>1300	▲ 3610	715	---
Particles >14µm	ASTM D7647	>80	▲ 340	53	---
Particles >21µm	ASTM D7647	>20	▲ 108	13	---
Particles >38µm	ASTM D7647	>4	▲ 8	0	---
Oil Cleanliness	ISO 4406 (c)	>17/13	▲ 19/16	17/13	---

Customer Id: VALALL
Sample No.: KC112055
Lab Number: 05903324
Test Package: IND 2



To manage this report scan the QR code

To discuss the diagnosis or test data:
Don Baldrige +1
don.b505@comcast.net

To change component or sample information:
Customer Service +1 1-800-237-1369
customerservice@wearcheck.com

RECOMMENDED ACTIONS

There are no recommended actions for this sample.

HISTORICAL DIAGNOSIS

28 Dec 2022 Diag: Don Baldrige

NORMAL



Resample at the next service interval to monitor. All component wear rates are normal. The amount and size of particulates present in the system are acceptable. There is no indication of any contamination in the oil. The AN level is acceptable for this fluid. The condition of the oil is acceptable for the time in service.

view report



23 Aug 2021 Diag: Don Baldrige

VIS DEBRIS



No corrective action is recommended at this time. The filter change at the time of sampling has been noted. Resample at the next service interval to monitor. We were unable to perform a particle count due to a high concentration of particles present in this sample. All component wear rates are normal. Moderate concentration of visible dirt/debris present in the oil. The AN level is acceptable for this fluid. The condition of the oil is suitable for further service.

view report



30 Dec 2020 Diag: Doug Bogart

ISO

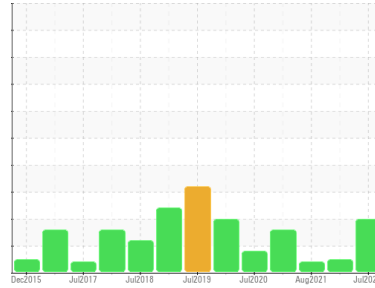


No corrective action is recommended at this time. Oil and filter change at the time of sampling has been noted. Resample at the next service interval to monitor. All component wear rates are normal. There is a high amount of particulates present in the oil. The AN level is acceptable for this fluid. The condition of the oil is suitable for further service.

view report



Machine Id
KAESER CSD 75 5296058 (S/N 1142)
Component
Compressor
Fluid
KAESER SIGMA (OEM) S-460 (--- GAL)



DIAGNOSIS

▲ Recommendation

No corrective action is recommended at this time. The filter change at the time of sampling has been noted. Resample at the next service interval to monitor.

Wear

All component wear rates are normal.

▲ Contamination

There is a high amount of particulates present in the oil.

Fluid Condition

The AN level is acceptable for this fluid. The condition of the oil is suitable for further service.

SAMPLE INFORMATION

method	limit/base	current	history1	history2
Sample Number	Client Info	KC112055	KC103155	KC89962
Sample Date	Client Info	06 Jul 2023	28 Dec 2022	23 Aug 2021
Machine Age	hrs	39619	37215	30177
Oil Age	hrs	2404	4653	3000
Oil Changed	Client Info	Not Chngd	Changed	Not Chngd
Sample Status		ABNORMAL	NORMAL	ABNORMAL

WEAR METALS

method	limit/base	current	history1	history2	
Iron	ppm	ASTM D5185m >50	0	0	0
Chromium	ppm	ASTM D5185m >10	0	0	0
Nickel	ppm	ASTM D5185m >3	0	0	0
Titanium	ppm	ASTM D5185m >3	0	0	0
Silver	ppm	ASTM D5185m >2	<1	0	0
Aluminum	ppm	ASTM D5185m >10	0	<1	0
Lead	ppm	ASTM D5185m >10	0	0	0
Copper	ppm	ASTM D5185m >50	3	11	7
Tin	ppm	ASTM D5185m >10	5	9	10
Antimony	ppm	ASTM D5185m	---	---	0
Vanadium	ppm	ASTM D5185m	0	0	0
Cadmium	ppm	ASTM D5185m	0	0	0

ADDITIVES

method	limit/base	current	history1	history2	
Boron	ppm	ASTM D5185m	0	0	0
Barium	ppm	ASTM D5185m 90	10	0	0
Molybdenum	ppm	ASTM D5185m	0	0	0
Manganese	ppm	ASTM D5185m	0	0	0
Magnesium	ppm	ASTM D5185m 90	51	16	21
Calcium	ppm	ASTM D5185m 2	0	0	0
Phosphorus	ppm	ASTM D5185m	0	5	0
Zinc	ppm	ASTM D5185m	19	35	7

CONTAMINANTS

method	limit/base	current	history1	history2	
Silicon	ppm	ASTM D5185m >25	0	<1	<1
Sodium	ppm	ASTM D5185m	10	8	13
Potassium	ppm	ASTM D5185m >20	4	<1	4
Water	%	ASTM D6304 >0.05	0.027	0.009	0.020
ppm Water	ppm	ASTM D6304 >500	274.7	95.3	207.0

FLUID CLEANLINESS

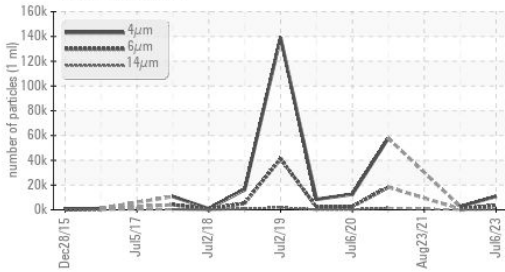
method	limit/base	current	history1	history2
Particles >4µm	ASTM D7647	10855	2664	---
Particles >6µm	ASTM D7647 >1300	▲ 3610	715	---
Particles >14µm	ASTM D7647 >80	▲ 340	53	---
Particles >21µm	ASTM D7647 >20	▲ 108	13	---
Particles >38µm	ASTM D7647 >4	▲ 8	0	---
Particles >71µm	ASTM D7647 >3	0	0	---
Oil Cleanliness	ISO 4406 (c) >17/13	▲ 19/16	17/13	---

FLUID DEGRADATION

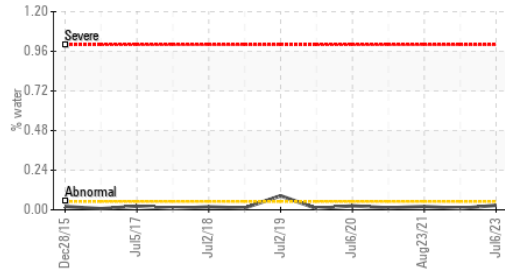
method	limit/base	current	history1	history2	
Acid Number (AN)	mg KOH/g	ASTM D8045 0.4	0.40	0.44	0.335

OIL ANALYSIS REPORT

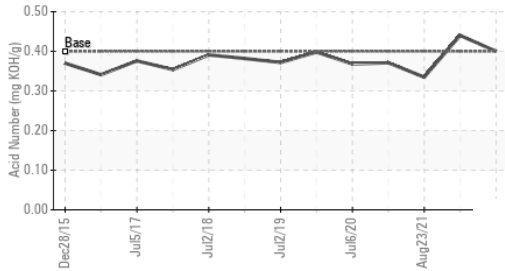
▲ Particle Trend



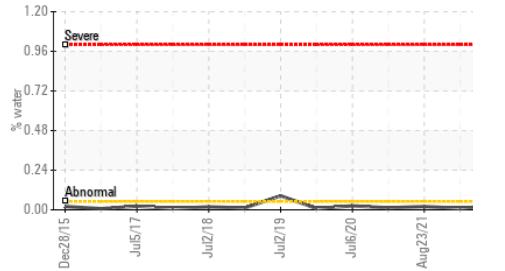
Water



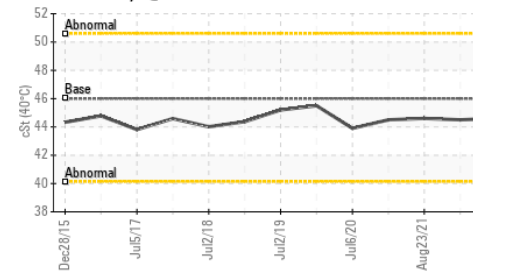
Acid Number



Water



Viscosity @ 40°C

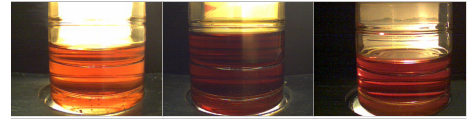


VISUAL	method	limit/base	current	history1	history2
White Metal	scalar	*Visual	NONE	NONE	NONE
Yellow Metal	scalar	*Visual	NONE	NONE	NONE
Precipitate	scalar	*Visual	NONE	NONE	NONE
Silt	scalar	*Visual	NONE	NONE	NONE
Debris	scalar	*Visual	NONE	NONE	▲ MODER
Sand/Dirt	scalar	*Visual	NONE	NONE	NONE
Appearance	scalar	*Visual	NORML	NORML	NORML
Odor	scalar	*Visual	NORML	NORML	NORML
Emulsified Water	scalar	*Visual	>0.05	NEG	NEG
Free Water	scalar	*Visual		NEG	NEG

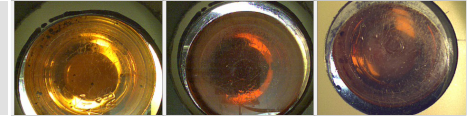
FLUID PROPERTIES	method	limit/base	current	history1	history2
Visc @ 40°C	cSt	ASTM D445 46	44.6	44.5	44.6

SAMPLE IMAGES	method	limit/base	current	history1	history2
---------------	--------	------------	---------	----------	----------

Color

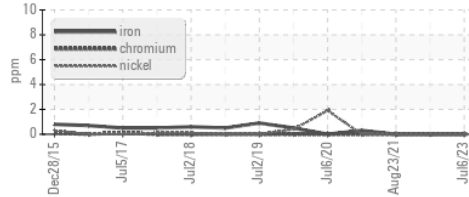


Bottom

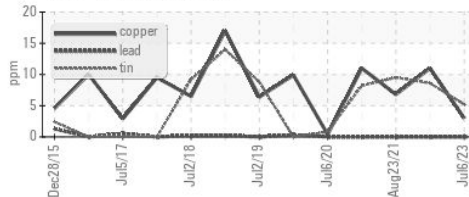


GRAPHS

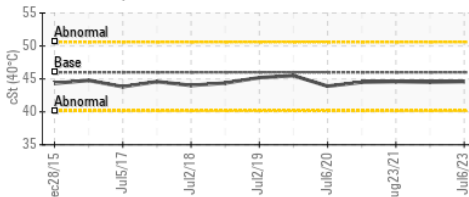
Ferrous Alloys



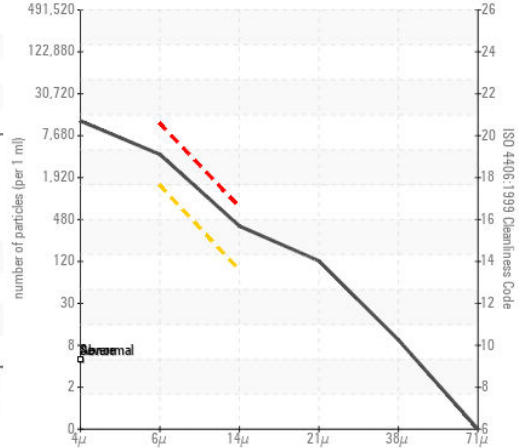
Non-ferrous Metals



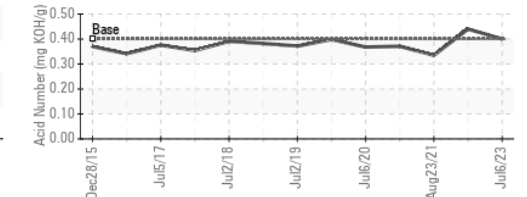
Viscosity @ 40°C



▲ Particle Count



Acid Number



Certificate L2367

Laboratory : WearCheck USA - 501 Madison Ave., Cary, NC 27513
 Sample No. : KC112055 Received : 20 Jul 2023
 Lab Number : 05903324 Diagnosed : 24 Jul 2023
 Unique Number : 10564680 Diagnostician : Don Baldrige
 Test Package : IND 2

VALLEY EXTRUSIONS
 795 ROBLE RD
 ALLENTOWN, PA
 US 18109
 Contact:

To discuss this sample report, contact Customer Service at 1-800-237-1369.

* - Denotes test methods that are outside of the ISO 17025 scope of accreditation.

Statements of conformity to specifications are based on the simple acceptance decision rule (JCGM 106:2012)

T:
F: