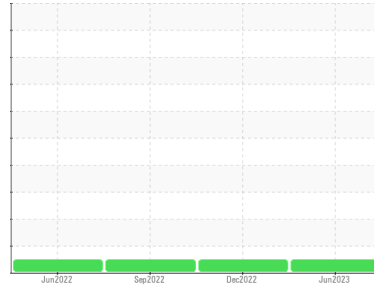


Area  
**PALEXTRA 44**  
Machine Id  
**SULLIVAN PALATEK 19DE000006 - WILLIAMS BODY SHOP**  
Component  
**Compressor**



**DIAGNOSIS**

**Recommendation**

Resample at the next service interval to monitor.

**Wear**

All component wear rates are normal.

**Contamination**

There is no indication of any contamination in the oil.

**Fluid Condition**

The AN level is acceptable for this fluid. The condition of the oil is suitable for further service.

| SAMPLE INFORMATION |             | method      | limit/base | current            | history1    | history2    |
|--------------------|-------------|-------------|------------|--------------------|-------------|-------------|
| Sample Number      | Client Info |             |            | <b>UCS05903389</b> | UCS05727398 | UCS05636646 |
| Sample Date        | Client Info |             |            | <b>30 Jun 2023</b> | 09 Dec 2022 | 07 Sep 2022 |
| Machine Age        | hrs         | Client Info |            | <b>35762</b>       | 31146       | 28605       |
| Oil Age            | hrs         | Client Info |            | <b>10815</b>       | 6199        | 0           |
| Oil Changed        | Client Info |             |            | <b>Changed</b>     | Not Changd  | N/A         |
| Sample Status      |             |             |            | <b>NORMAL</b>      | NORMAL      | NORMAL      |

| WEAR METALS |     | method      | limit/base | current      | history1 | history2 |
|-------------|-----|-------------|------------|--------------|----------|----------|
| Iron        | ppm | ASTM D5185m | >50        | <b>0</b>     | 0        | 0        |
| Chromium    | ppm | ASTM D5185m | >10        | <b>0</b>     | 0        | 0        |
| Nickel      | ppm | ASTM D5185m |            | <b>0</b>     | 0        | 0        |
| Titanium    | ppm | ASTM D5185m |            | <b>0</b>     | 0        | 0        |
| Silver      | ppm | ASTM D5185m |            | <b>0</b>     | 0        | <1       |
| Aluminum    | ppm | ASTM D5185m | >25        | <b>0</b>     | 0        | <1       |
| Lead        | ppm | ASTM D5185m | >25        | <b>0</b>     | 0        | 0        |
| Copper      | ppm | ASTM D5185m | >50        | <b>0</b>     | <1       | <1       |
| Tin         | ppm | ASTM D5185m | >15        | <b>0</b>     | <1       | <1       |
| Vanadium    | ppm | ASTM D5185m |            | <b>&lt;1</b> | 0        | 0        |
| Cadmium     | ppm | ASTM D5185m |            | <b>0</b>     | 0        | 0        |

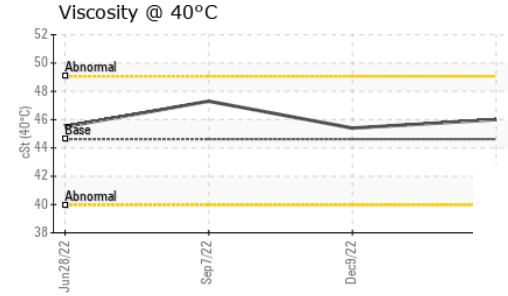
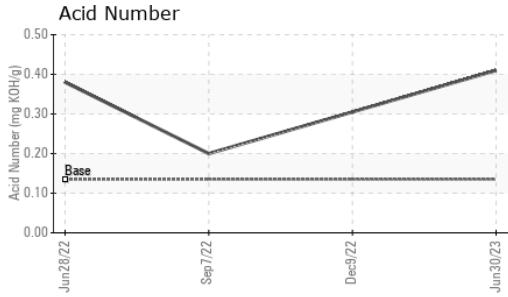
| ADDITIVES  |     | method      | limit/base | current    | history1 | history2 |
|------------|-----|-------------|------------|------------|----------|----------|
| Boron      | ppm | ASTM D5185m | 0          | <b>0</b>   | 0        | <1       |
| Barium     | ppm | ASTM D5185m | 0.3        | <b>0</b>   | 0        | 0        |
| Molybdenum | ppm | ASTM D5185m | 0          | <b>0</b>   | 0        | 0        |
| Manganese  | ppm | ASTM D5185m | 0.3        | <b>0</b>   | 0        | 0        |
| Magnesium  | ppm | ASTM D5185m | 0.4        | <b>0</b>   | 0        | 0        |
| Calcium    | ppm | ASTM D5185m | 0          | <b>0</b>   | 0        | 0        |
| Phosphorus | ppm | ASTM D5185m | 689        | <b>577</b> | 637      | 637      |
| Zinc       | ppm | ASTM D5185m | 0          | <b>0</b>   | 0        | 0        |
| Sulfur     | ppm | ASTM D5185m | 1237       | <b>459</b> | 657      | 783      |

| CONTAMINANTS |     | method      | limit/base | current      | history1 | history2 |
|--------------|-----|-------------|------------|--------------|----------|----------|
| Silicon      | ppm | ASTM D5185m | >25        | <b>&lt;1</b> | 2        | 2        |
| Sodium       | ppm | ASTM D5185m |            | <b>&lt;1</b> | 0        | 0        |
| Potassium    | ppm | ASTM D5185m | >20        | <b>0</b>     | 0        | 1        |

| FLUID DEGRADATION |          | method     | limit/base | current     | history1 | history2 |
|-------------------|----------|------------|------------|-------------|----------|----------|
| Acid Number (AN)  | mg KOH/g | ASTM D8045 | 0.135      | <b>0.41</b> | 0.305    | 0.20     |

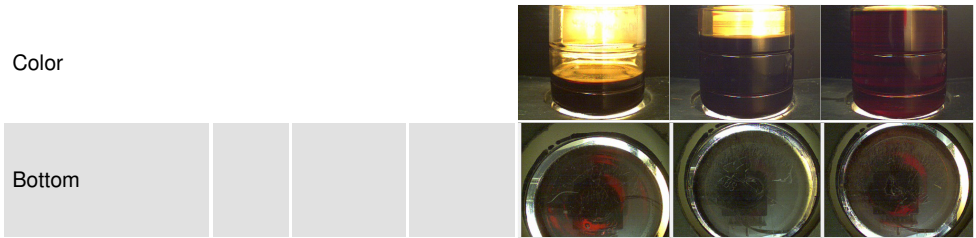
| VISUAL           |        | method  | limit/base | current      | history1 | history2 |
|------------------|--------|---------|------------|--------------|----------|----------|
| White Metal      | scalar | *Visual | NONE       | <b>NONE</b>  | NONE     | NONE     |
| Yellow Metal     | scalar | *Visual | NONE       | <b>NONE</b>  | NONE     | NONE     |
| Precipitate      | scalar | *Visual | NONE       | <b>NONE</b>  | NONE     | NONE     |
| Silt             | scalar | *Visual | NONE       | <b>NONE</b>  | NONE     | NONE     |
| Debris           | scalar | *Visual | NONE       | <b>NONE</b>  | NONE     | LIGHT    |
| Sand/Dirt        | scalar | *Visual | NONE       | <b>NONE</b>  | NONE     | NONE     |
| Appearance       | scalar | *Visual | NORML      | <b>NORML</b> | NORML    | NORML    |
| Odor             | scalar | *Visual | NORML      | <b>NORML</b> | NORML    | NORML    |
| Emulsified Water | scalar | *Visual | >0.1       | <b>NEG</b>   | NEG      | NEG      |
| Free Water       | scalar | *Visual |            | <b>NEG</b>   | NEG      | NEG      |

# OIL ANALYSIS REPORT

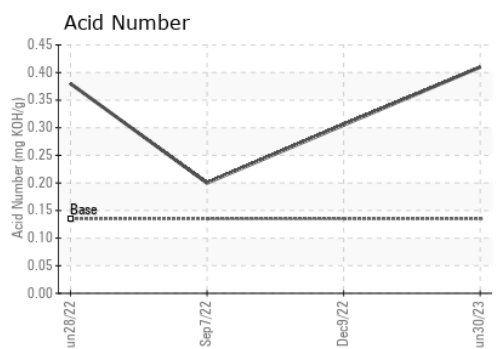
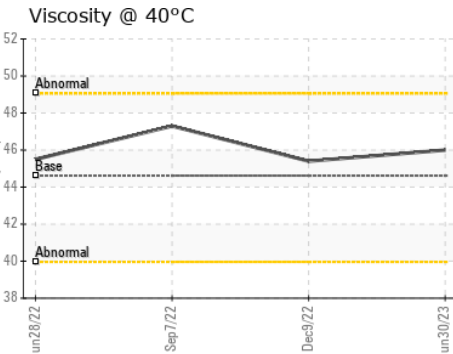
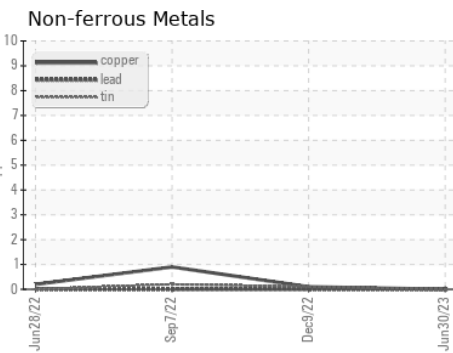
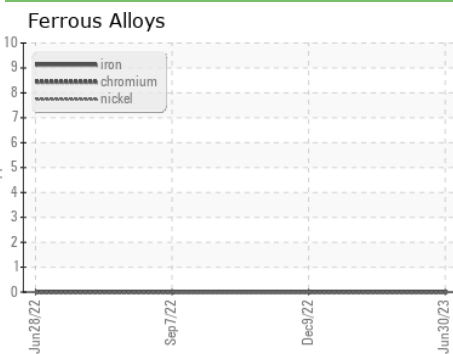


| FLUID PROPERTIES | method | limit/base | current | history1    | history2 |      |
|------------------|--------|------------|---------|-------------|----------|------|
| Visc @ 40°C      | cSt    | ASTM D445  | 44.62   | <b>46.0</b> | 45.4     | 47.3 |

| SAMPLE IMAGES | method | limit/base | current | history1 | history2 |
|---------------|--------|------------|---------|----------|----------|
|---------------|--------|------------|---------|----------|----------|



## GRAPHS



**Laboratory** : WearCheck USA - 501 Madison Ave., Cary, NC 27513  
**Sample No.** : UCS05903389 **Received** : 20 Jul 2023  
**Lab Number** : **05903389** **Diagnosed** : 21 Jul 2023  
**Unique Number** : 10564745 **Diagnostician** : Jonathan Hester  
**Test Package** : IND 2

**AIRLEX**  
 TRAVERSE CITY, MI  
 US 49686  
 Contact: MIKE  
 office@airlex.com  
 T: (231)929-1601  
 F:

To discuss this sample report, contact Customer Service at 1-800-237-1369.  
 \* - Denotes test methods that are outside of the ISO 17025 scope of accreditation.  
 Statements of conformity to specifications are based on the simple acceptance decision rule (JCGM 106:2012)