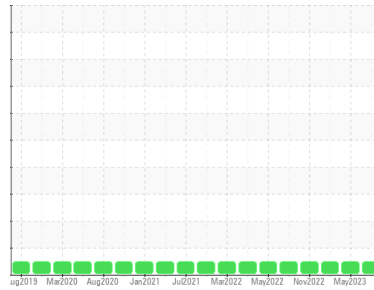




# OIL ANALYSIS REPORT

Sample Rating Trend

**NORMAL**



Machine Id  
**LIM4\_U2720 LIM4\_U2720\_M2720**

Component  
**Drive End Bearing**

Fluid  
**ROYAL PURPLE SYNFILM GT 32 (30 GAL)**

## DIAGNOSIS

### Recommendation

Resample at the next service interval to monitor.

### Wear

All component wear rates are normal.

### Contamination

There is no indication of any contamination in the oil.

### Fluid Condition

The AN level is acceptable for this fluid. The condition of the oil is suitable for further service.

## SAMPLE INFORMATION

method	limit/base	current	history1	history2
Sample Number	Client Info	<b>RP0029418</b>	RP0029437	RP0021270
Sample Date	Client Info	<b>18 Jul 2023</b>	18 May 2023	16 Jan 2023
Machine Age	hrs Client Info	<b>0</b>	0	0
Oil Age	hrs Client Info	<b>0</b>	0	0
Oil Changed	Client Info	<b>N/A</b>	N/A	N/A
Sample Status		<b>NORMAL</b>	NORMAL	NORMAL

## WEAR METALS

method	limit/base	current	history1	history2
Iron	ppm ASTM D5185m >20	<b>&lt;1</b>	<1	<1
Chromium	ppm ASTM D5185m >20	<b>0</b>	0	0
Nickel	ppm ASTM D5185m >20	<b>0</b>	<1	0
Titanium	ppm ASTM D5185m	<b>0</b>	0	0
Silver	ppm ASTM D5185m	<b>0</b>	0	0
Aluminum	ppm ASTM D5185m >20	<b>&lt;1</b>	<1	<1
Lead	ppm ASTM D5185m >20	<b>0</b>	0	0
Copper	ppm ASTM D5185m >20	<b>&lt;1</b>	<1	1
Tin	ppm ASTM D5185m >20	<b>0</b>	<1	<1
Vanadium	ppm ASTM D5185m	<b>0</b>	0	0
Cadmium	ppm ASTM D5185m	<b>0</b>	0	0

## ADDITIVES

method	limit/base	current	history1	history2
Boron	ppm ASTM D5185m	<b>0</b>	0	0
Barium	ppm ASTM D5185m	<b>0</b>	0	0
Molybdenum	ppm ASTM D5185m	<b>0</b>	0	0
Manganese	ppm ASTM D5185m	<b>0</b>	<1	0
Magnesium	ppm ASTM D5185m	<b>63</b>	68	65
Calcium	ppm ASTM D5185m	<b>1</b>	0	0
Phosphorus	ppm ASTM D5185m	<b>2</b>	4	27
Zinc	ppm ASTM D5185m	<b>0</b>	0	0

## CONTAMINANTS

method	limit/base	current	history1	history2
Silicon	ppm ASTM D5185m >15	<b>1</b>	1	2
Sodium	ppm ASTM D5185m	<b>&lt;1</b>	1	<1
Potassium	ppm ASTM D5185m >20	<b>0</b>	1	0
Water	% ASTM D6304 >2	<b>0.021</b>	0.008	0.008
ppm Water	ppm ASTM D6304	<b>212.4</b>	88.6	88.9

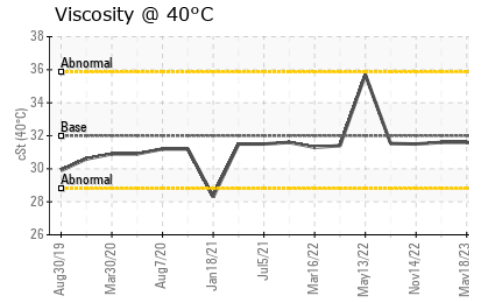
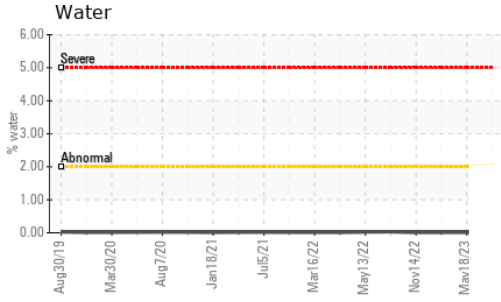
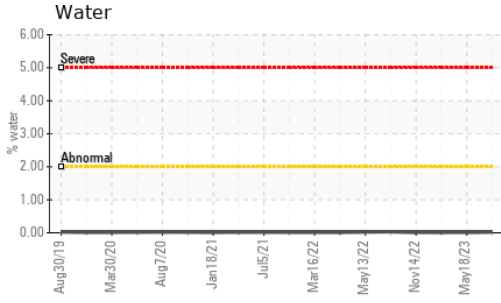
## FLUID DEGRADATION

method	limit/base	current	history1	history2
Acid Number (AN)	mg KOH/g ASTM D8045	<b>0.39</b>	0.34	0.35

## VISUAL

method	limit/base	current	history1	history2
White Metal	scalar *Visual NONE	<b>NONE</b>	NONE	NONE
Yellow Metal	scalar *Visual NONE	<b>NONE</b>	NONE	NONE
Precipitate	scalar *Visual NONE	<b>NONE</b>	NONE	NONE
Silt	scalar *Visual NONE	<b>NONE</b>	NONE	NONE
Debris	scalar *Visual NONE	<b>NONE</b>	NONE	LIGHT
Sand/Dirt	scalar *Visual NONE	<b>NONE</b>	NONE	NONE
Appearance	scalar *Visual NORML	<b>NORML</b>	NORML	NORML
Odor	scalar *Visual NORML	<b>NORML</b>	NORML	NORML
Emulsified Water	scalar *Visual >2	<b>NEG</b>	NEG	NEG
Free Water	scalar *Visual	<b>NEG</b>	NEG	NEG

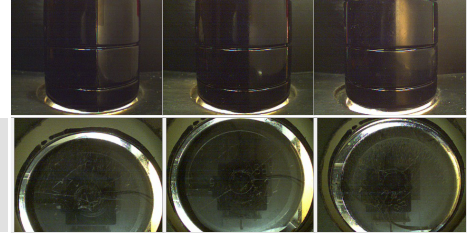
# OIL ANALYSIS REPORT



FLUID PROPERTIES		method	limit/base	current	history1	history2
Visc @ 40°C	cSt	ASTM D445	32	<b>31.4</b>	31.6	31.6

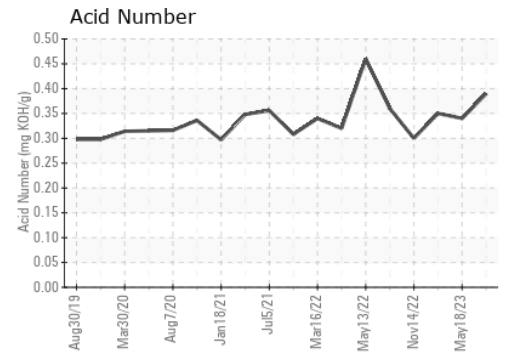
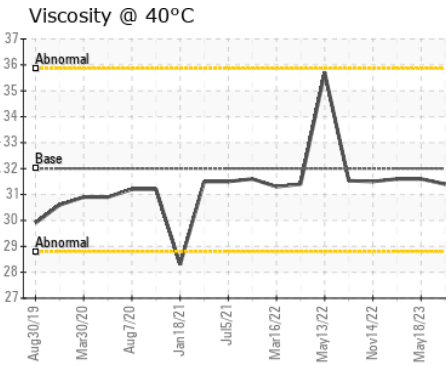
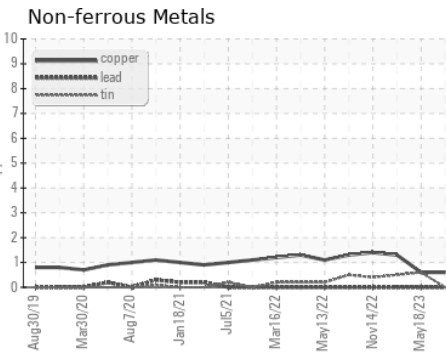
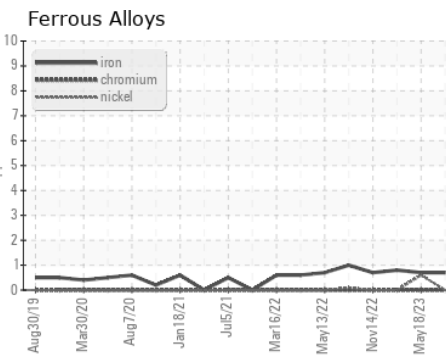
SAMPLE IMAGES		method	limit/base	current	history1	history2
---------------	--	--------	------------	---------	----------	----------

Color



Bottom

## GRAPHS



Certificate L2367

**Laboratory** : WearCheck USA - 501 Madison Ave., Cary, NC 27513  
**Sample No.** : RP0029418 **Received** : 20 Jul 2023  
**Lab Number** : **05903819** **Diagnosed** : 24 Jul 2023  
**Unique Number** : 10565175 **Diagnostician** : Don Baldrige  
**Test Package** : PLANT

**ENERGY TRANSFER - LIMA**  
 1520 BUCKEYE RD  
 LIMA, OH  
 US 45804

Contact: ANDREW WYDERKA  
 andrew.wyderka@energytransfer.com

To discuss this sample report, contact Customer Service at 1-800-237-1369.

\* - Denotes test methods that are outside of the ISO 17025 scope of accreditation.

Statements of conformity to specifications are based on the simple acceptance decision rule (JCGM 106:2012)

T: (419)618-1505

F: