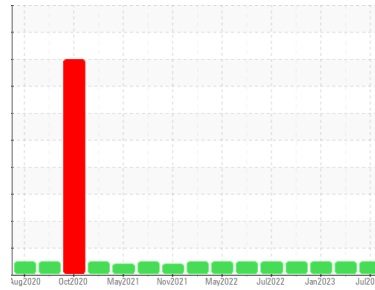




# OIL ANALYSIS REPORT

Sample Rating Trend



Machine Id  
**LIM4\_U41 LIM4\_U41\_P41**  
 Component  
**Drive End Pump**  
 Fluid  
**ROYAL PURPLE SYNFILM GT 32 (2 GAL)**

## DIAGNOSIS

- Recommendation**  
 Resample at the next service interval to monitor.
- Wear**  
 All component wear rates are normal.
- Contamination**  
 There is no indication of any contamination in the oil.
- Fluid Condition**  
 The AN level is acceptable for this fluid. The condition of the oil is suitable for further service.

SAMPLE INFORMATION		method	limit/base	current	history1	history2
Sample Number	Client Info			<b>RP0029424</b>	RP0029428	RP0021264
Sample Date	Client Info			<b>18 Jul 2023</b>	18 May 2023	16 Jan 2023
Machine Age	hrs Client Info			<b>0</b>	0	0
Oil Age	hrs Client Info			<b>0</b>	0	0
Oil Changed	Client Info			<b>N/A</b>	N/A	N/A
Sample Status				<b>NORMAL</b>	NORMAL	NORMAL

WEAR METALS		method	limit/base	current	history1	history2
Iron	ppm	ASTM D5185m	>90	<b>2</b>	2	0
Chromium	ppm	ASTM D5185m	>5	<b>0</b>	0	0
Nickel	ppm	ASTM D5185m	>5	<b>0</b>	<1	0
Titanium	ppm	ASTM D5185m	>3	<b>0</b>	0	0
Silver	ppm	ASTM D5185m	>3	<b>0</b>	0	0
Aluminum	ppm	ASTM D5185m	>7	<b>&lt;1</b>	<1	<1
Lead	ppm	ASTM D5185m	>12	<b>&lt;1</b>	2	12
Copper	ppm	ASTM D5185m	>30	<b>26</b>	23	13
Tin	ppm	ASTM D5185m	>9	<b>&lt;1</b>	<1	2
Vanadium	ppm	ASTM D5185m		<b>0</b>	0	0
Cadmium	ppm	ASTM D5185m		<b>0</b>	0	0

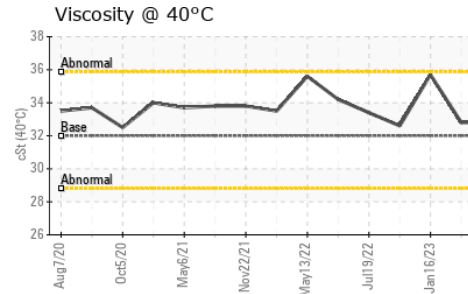
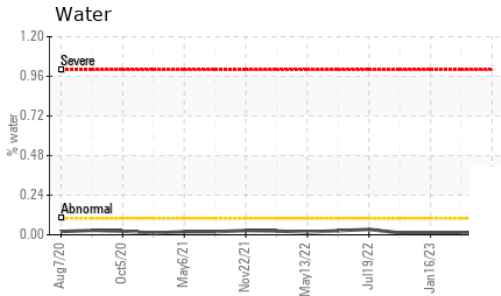
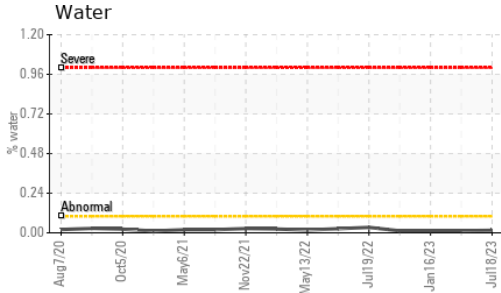
ADDITIVES		method	limit/base	current	history1	history2
Boron	ppm	ASTM D5185m		<b>0</b>	0	0
Barium	ppm	ASTM D5185m		<b>0</b>	0	0
Molybdenum	ppm	ASTM D5185m		<b>0</b>	0	0
Manganese	ppm	ASTM D5185m		<b>0</b>	<1	0
Magnesium	ppm	ASTM D5185m		<b>88</b>	92	86
Calcium	ppm	ASTM D5185m		<b>4</b>	3	<1
Phosphorus	ppm	ASTM D5185m		<b>&lt;1</b>	4	26
Zinc	ppm	ASTM D5185m		<b>0</b>	0	0

CONTAMINANTS		method	limit/base	current	history1	history2
Silicon	ppm	ASTM D5185m	>60	<b>5</b>	5	0
Sodium	ppm	ASTM D5185m		<b>&lt;1</b>	1	<1
Potassium	ppm	ASTM D5185m	>20	<b>0</b>	1	0
Water	%	ASTM D6304		<b>0.015</b>	0.013	0.013
ppm Water	ppm	ASTM D6304	>.1	<b>150.4</b>	134.9	138.3

FLUID DEGRADATION		method	limit/base	current	history1	history2
Acid Number (AN)	mg KOH/g	ASTM D8045		<b>0.37</b>	0.37	0.36

VISUAL		method	limit/base	current	history1	history2
White Metal	scalar	*Visual	NONE	<b>NONE</b>	NONE	NONE
Yellow Metal	scalar	*Visual	NONE	<b>NONE</b>	NONE	NONE
Precipitate	scalar	*Visual	NONE	<b>NONE</b>	NONE	NONE
Silt	scalar	*Visual	NONE	<b>NONE</b>	NONE	NONE
Debris	scalar	*Visual	NONE	<b>NONE</b>	NONE	NONE
Sand/Dirt	scalar	*Visual	NONE	<b>NONE</b>	NONE	NONE
Appearance	scalar	*Visual	NORML	<b>NORML</b>	NORML	NORML
Odor	scalar	*Visual	NORML	<b>NORML</b>	NORML	NORML
Emulsified Water	scalar	*Visual		<b>NEG</b>	NEG	NEG
Free Water	scalar	*Visual		<b>NEG</b>	NEG	NEG

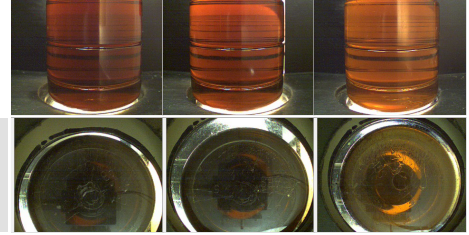
# OIL ANALYSIS REPORT



FLUID PROPERTIES		method	limit/base	current	history1	history2
Visc @ 40°C	cSt	ASTM D445	32	<b>32.8</b>	32.8	35.7

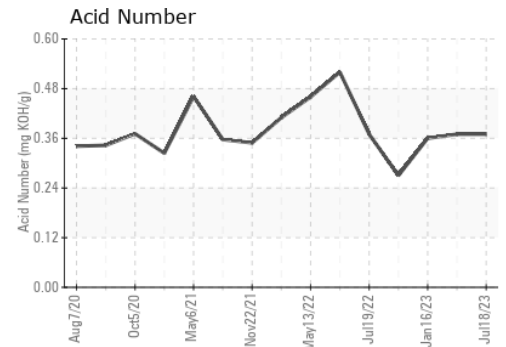
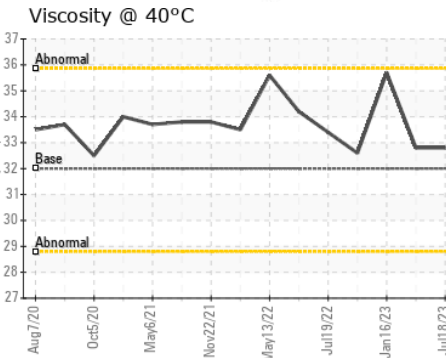
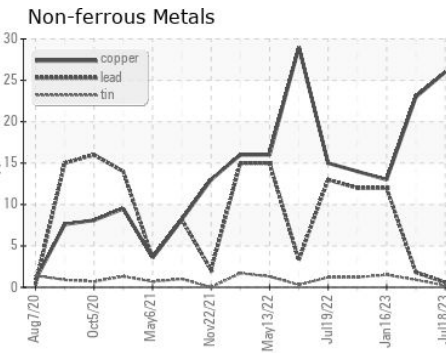
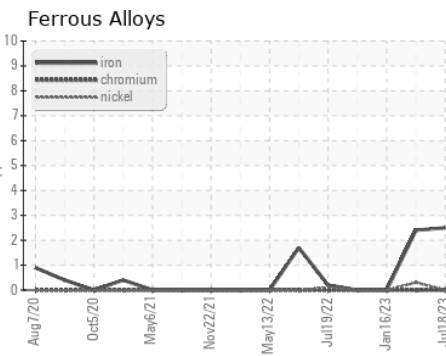
SAMPLE IMAGES		method	limit/base	current	history1	history2
---------------	--	--------	------------	---------	----------	----------

Color



Bottom

## GRAPHS



Certificate L2367

**Laboratory** : WearCheck USA - 501 Madison Ave., Cary, NC 27513  
**Sample No.** : RP0029424 **Received** : 20 Jul 2023  
**Lab Number** : **05903823** **Diagnosed** : 24 Jul 2023  
**Unique Number** : 10565179 **Diagnostician** : Don Baldrige  
**Test Package** : PLANT

**ENERGY TRANSFER - LIMA**  
 1520 BUCKEYE RD  
 LIMA, OH  
 US 45804

Contact: ANDREW WYDERKA  
 andrew.wyderka@energytransfer.com

T: (419)618-1505

F:

To discuss this sample report, contact Customer Service at 1-800-237-1369.

\* - Denotes test methods that are outside of the ISO 17025 scope of accreditation.

Statements of conformity to specifications are based on the simple acceptance decision rule (JCGM 106:2012)