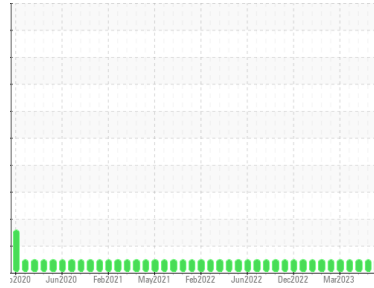




# OIL ANALYSIS REPORT

Sample Rating Trend



**NORMAL**



Machine Id  
**Byron Center New Oil Byron Center New Oil**  
 Component  
**New (Unused) Oil**  
 Fluid  
**CHEVRON HDAX 6500 LFG GAS ENGINE OIL (--- GAL)**

## DIAGNOSIS

### Recommendation

This is a baseline read-out on the submitted sample.

SAMPLE INFORMATION		method	limit/base	current	history1	history2
Sample Number	Client Info			<b>WC0615013</b>	WC0614991	WC05863459
Sample Date	Client Info			<b>18 Jul 2023</b>	06 Jul 2023	01 Jun 2023
Machine Age	hrs	Client Info		<b>1</b>	1	0
Oil Age	hrs	Client Info		<b>1</b>	1	0
Oil Changed	Client Info			<b>N/A</b>	N/A	N/A
Sample Status				<b>NORMAL</b>	NORMAL	NORMAL

WEAR METALS		method	limit/base	current	history1	history2
Iron	ppm	ASTM D5185m	>5	<b>&lt;1</b>	<1	<1
Chromium	ppm	ASTM D5185m	>5	<b>0</b>	0	0
Nickel	ppm	ASTM D5185m	>5	<b>0</b>	<1	<1
Titanium	ppm	ASTM D5185m		<b>&lt;1</b>	0	0
Silver	ppm	ASTM D5185m	>5	<b>0</b>	<1	0
Aluminum	ppm	ASTM D5185m	>5	<b>&lt;1</b>	0	<1
Lead	ppm	ASTM D5185m	>5	<b>0</b>	0	0
Copper	ppm	ASTM D5185m	>5	<b>0</b>	0	0
Tin	ppm	ASTM D5185m	>5	<b>0</b>	0	0
Vanadium	ppm	ASTM D5185m		<b>&lt;1</b>	0	0
Cadmium	ppm	ASTM D5185m		<b>0</b>	0	0

ADDITIVES		method	limit/base	current	history1	history2
Boron	ppm	ASTM D5185m		<b>0</b>	0	0
Barium	ppm	ASTM D5185m		<b>0</b>	0	0
Molybdenum	ppm	ASTM D5185m		<b>1</b>	2	1
Manganese	ppm	ASTM D5185m		<b>&lt;1</b>	<1	<1
Magnesium	ppm	ASTM D5185m		<b>6</b>	10	9
Calcium	ppm	ASTM D5185m		<b>1825</b>	1641	1690
Phosphorus	ppm	ASTM D5185m		<b>255</b>	245	242
Zinc	ppm	ASTM D5185m		<b>302</b>	297	303
Sulfur	ppm	ASTM D5185m		<b>1795</b>	1658	1669

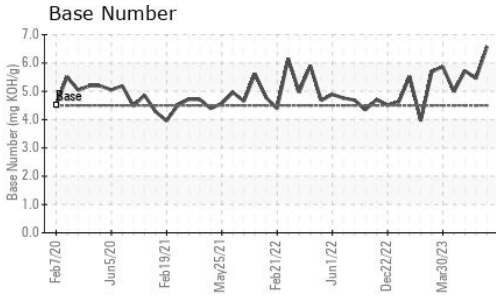
CONTAMINANTS		method	limit/base	current	history1	history2
Silicon	ppm	ASTM D5185m	>15	<b>8</b>	7	6
Sodium	ppm	ASTM D5185m		<b>&lt;1</b>	0	0
Potassium	ppm	ASTM D5185m	>20	<b>0</b>	2	2

FLUID DEGRADATION		method	limit/base	current	history1	history2
Acid Number (AN)	mg KOH/g	ASTM D8045	1.2	<b>0.37</b>	0.39	0.44
Base Number (BN)	mg KOH/g	ASTM D2896	4.5	<b>6.58</b>	5.46	5.72

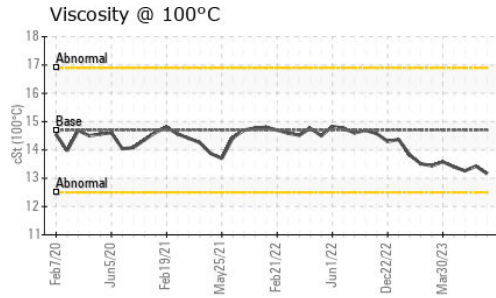
VISUAL		method	limit/base	current	history1	history2
White Metal	scalar	*Visual	NONE	<b>NONE</b>	NONE	LIGHT
Yellow Metal	scalar	*Visual	NONE	<b>NONE</b>	NONE	NONE
Precipitate	scalar	*Visual	NONE	<b>NONE</b>	NONE	NONE
Silt	scalar	*Visual	NONE	<b>NONE</b>	NONE	NONE
Debris	scalar	*Visual	NONE	<b>NONE</b>	NONE	NONE
Sand/Dirt	scalar	*Visual	NONE	<b>NONE</b>	NONE	NONE
Appearance	scalar	*Visual	NORML	<b>NORML</b>	NORML	NORML
Odor	scalar	*Visual	NORML	<b>NORML</b>	NORML	NORML
Emulsified Water	scalar	*Visual		<b>NEG</b>	NEG	NEG
Free Water	scalar	*Visual		<b>NEG</b>	NEG	NEG



# OIL ANALYSIS REPORT

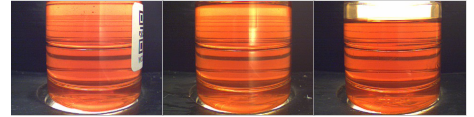


FLUID PROPERTIES	method	limit/base	current	history1	history2	
Visc @ 40°C	cSt	ASTM D445	130	<b>115.9</b>	114.0	117.1
Visc @ 100°C	cSt	ASTM D445	14.7	<b>13.16</b>	13.43	13.26
Viscosity Index (VI)	Scale	ASTM D2270	114	<b>108</b>	114	108



SAMPLE IMAGES	method	limit/base	current	history1	history2
---------------	--------	------------	---------	----------	----------

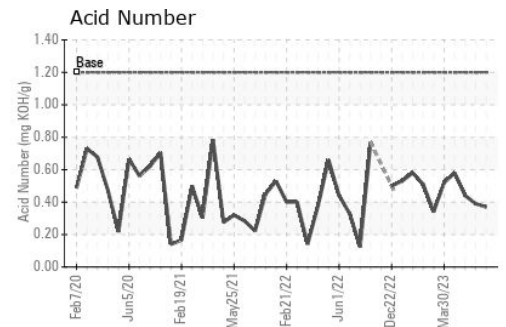
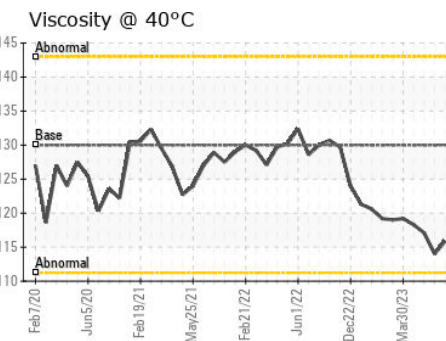
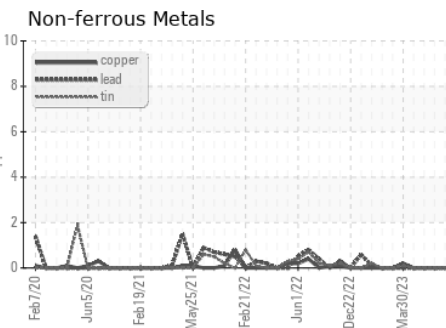
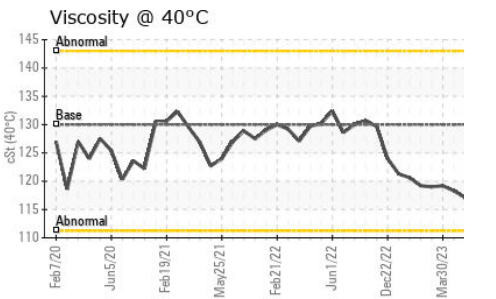
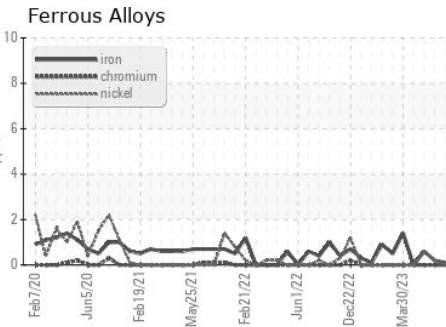
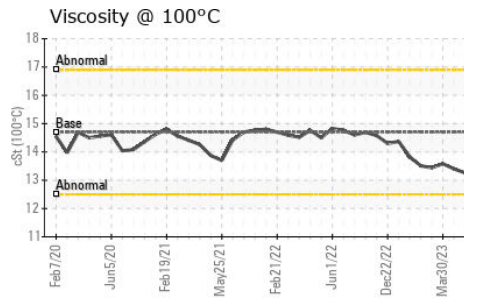
Color



Bottom



## GRAPHS



Certificate L2367

**Laboratory** : WearCheck USA - 501 Madison Ave., Cary, NC 27513  
**Sample No.** : WC0615013  
**Lab Number** : 05904025  
**Unique Number** : 10565381  
**Test Package** : MOB 2 ( Additional Tests: FT-IR, ICP-NewOil, KV100, PrtCount, TBN, VI )

**EDL NA Recips-Byron Center**  
 Byron Center Powerstation, 10310 South Kent Road  
 Byron Center, MI  
 US 49315  
 Contact: Jake Ripke  
 Jake.Ripke@edlenergy.com

To discuss this sample report, contact Customer Service at 1-800-237-1369.

\* - Denotes test methods that are outside of the ISO 17025 scope of accreditation.

Statements of conformity to specifications are based on the simple acceptance decision rule (JCGM 106:2012)

T:  
F: