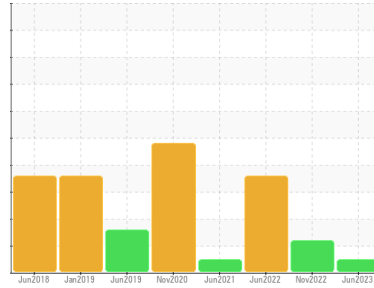




OIL ANALYSIS REPORT

Sample Rating Trend



NORMAL



Area
ULTRA COOLANT
 Machine Id
CBV451968 - WYFFELS HYBRID
 Component
Compressor

DIAGNOSIS

Recommendation

Resample at the next service interval to monitor.

Wear

All component wear rates are normal.

Contamination

There is no indication of any contamination in the oil.

Fluid Condition

The AN level is acceptable for this fluid. The condition of the oil is suitable for further service.

SAMPLE INFORMATION

	method	limit/base	current	history1	history2
Sample Number	Client Info		UCH05904464	UCH05711099	UCH05585141
Sample Date	Client Info		13 Jun 2023	18 Nov 2022	22 Jun 2022
Machine Age	hrs	Client Info	32933	32778	30582
Oil Age	hrs	Client Info	5885	6000	2580
Oil Changed	Client Info		N/A	Not Changd	Not Changd
Sample Status			NORMAL	ATTENTION	SEVERE

WEAR METALS

	method	limit/base	current	history1	history2
Iron	ppm	ASTM D5185m >50	0	<1	2
Chromium	ppm	ASTM D5185m >10	0	0	0
Nickel	ppm	ASTM D5185m	0	0	<1
Titanium	ppm	ASTM D5185m	<1	0	0
Silver	ppm	ASTM D5185m	0	0	<1
Aluminum	ppm	ASTM D5185m >25	<1	<1	<1
Lead	ppm	ASTM D5185m >25	0	<1	1
Copper	ppm	ASTM D5185m >50	1	2	4
Tin	ppm	ASTM D5185m >15	<1	1	<1
Antimony	ppm	ASTM D5185m	---	---	---
Vanadium	ppm	ASTM D5185m	<1	0	0
Cadmium	ppm	ASTM D5185m	0	0	<1

ADDITIVES

	method	limit/base	current	history1	history2
Boron	ppm	ASTM D5185m 0	0	<1	7
Barium	ppm	ASTM D5185m 500	970	841	918
Molybdenum	ppm	ASTM D5185m 0	0	0	<1
Manganese	ppm	ASTM D5185m	<1	<1	<1
Magnesium	ppm	ASTM D5185m 0	1	<1	2
Calcium	ppm	ASTM D5185m 0	4	5	10
Phosphorus	ppm	ASTM D5185m 20	1	5	12
Zinc	ppm	ASTM D5185m 0	87	195	366
Sulfur	ppm	ASTM D5185m 200	435	472	596

CONTAMINANTS

	method	limit/base	current	history1	history2
Silicon	ppm	ASTM D5185m >25	<1	2	2
Sodium	ppm	ASTM D5185m	35	54	63
Potassium	ppm	ASTM D5185m >20	<1	5	7

FLUID DEGRADATION

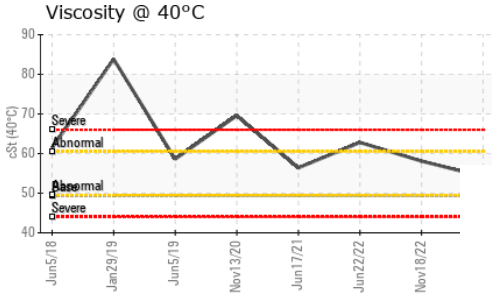
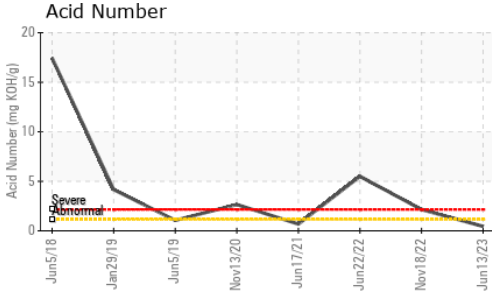
	method	limit/base	current	history1	history2
Acid Number (AN)	mg KOH/g	ASTM D8045	0.45	▲ 2.15	● 5.50

VISUAL

	method	limit/base	current	history1	history2
White Metal	scalar	*Visual NONE	LIGHT	NONE	NONE
Yellow Metal	scalar	*Visual NONE	NONE	NONE	NONE
Precipitate	scalar	*Visual NONE	NONE	NONE	NONE
Silt	scalar	*Visual NONE	NONE	NONE	NONE
Debris	scalar	*Visual NONE	NONE	NONE	NONE
Sand/Dirt	scalar	*Visual NONE	NONE	NONE	NONE
Appearance	scalar	*Visual NORML	NORML	NORML	NORML
Odor	scalar	*Visual NORML	NORML	NORML	NORML
Emulsified Water	scalar	*Visual >0.1	NEG	NEG	NEG
Free Water	scalar	*Visual	NEG	NEG	NEG



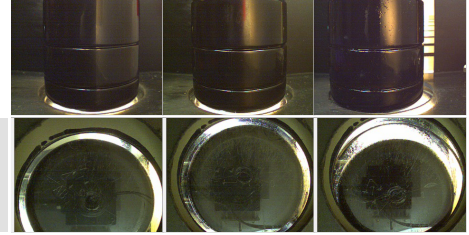
OIL ANALYSIS REPORT



FLUID PROPERTIES		method	limit/base	current	history1	history2
Visc @ 40°C	cSt	ASTM D445	49.4	54.2	58.1	▲ 62.8

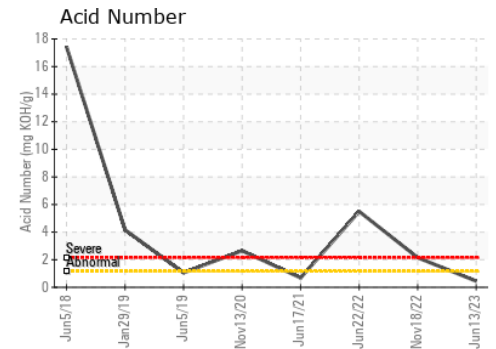
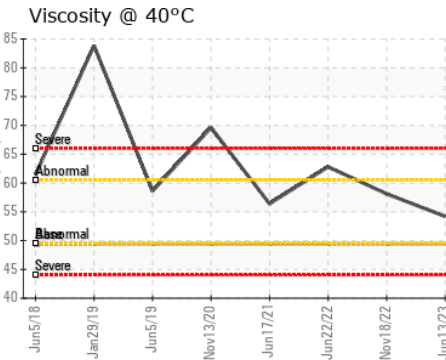
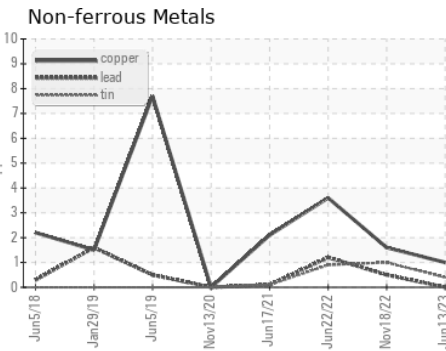
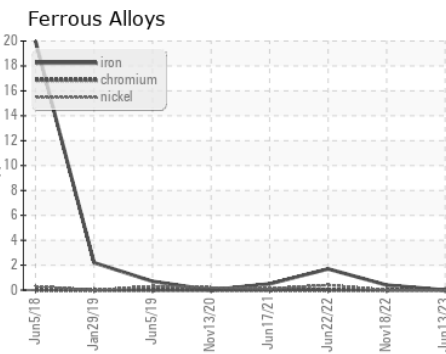
SAMPLE IMAGES		method	limit/base	current	history1	history2
---------------	--	--------	------------	---------	----------	----------

Color



Bottom

GRAPHS



Certificate L2367

Laboratory : WearCheck USA - 501 Madison Ave., Cary, NC 27513
Sample No. : UCH05904464 **Received** : 21 Jul 2023
Lab Number : 05904464 **Diagnosed** : 24 Jul 2023
Unique Number : 10565820 **Diagnostician** : Doug Bogart
Test Package : IND 2

To discuss this sample report, contact Customer Service at 1-800-237-1369.

* - Denotes test methods that are outside of the ISO 17025 scope of accreditation.

Statements of conformity to specifications are based on the simple acceptance decision rule (JCGM 106:2012)

A-L-L EQUIPMENT INC
 204 38TH ST
 MOLINE, IL
 US 61265

Contact: KEVIN DESPOT
 kevind@a-l-equipment.com
 T: (815)877-7000
 F: (309)762-9950