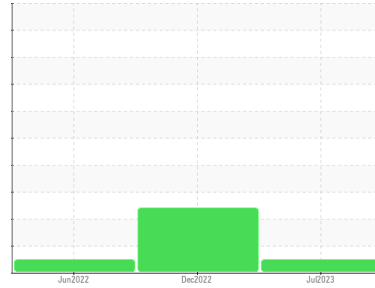




FUEL REPORT

Sample Rating Trend



NORMAL



Machine Id
HC1115

Component
Diesel Fuel

Fluid
DIESEL FUEL No. 2 (--- GAL)

DIAGNOSIS

Recommendation

This is a baseline read-out on the submitted sample.

Corrosion

All metal levels are normal indicating no corrosion in the system.

Contaminants

The water content is negligible. There is no indication of any contamination in the fuel.

Fuel Condition

The condition of the fuel is acceptable for the time in service.

SAMPLE INFORMATION		method	limit/base	current	history1	history2
Sample Number	Client Info			WC0823674	WC0761625	WC0704393
Sample Date	Client Info			11 Jul 2023	28 Dec 2022	02 Jun 2022
Machine Age	hrs	Client Info		7384	7105	6271
Sample Status				NORMAL	ABNORMAL	NORMAL

PHYSICAL PROPERTIES		method	limit/base	current	history1	history2
Visc @ 40°C	cSt	ASTM D445	4.1	2.4	2.48	2.44

SULFUR CONTENT		method	limit/base	current	history1	history2
Sulfur	ppm	ASTM D5185m		134	0	18

CONTAMINANTS		method	limit/base	current	history1	history2
Silicon	ppm	ASTM D5185m	<1.0	7	0	0
Sodium	ppm	ASTM D5185m	<0.1	<1	0	0
Potassium	ppm	ASTM D5185m	<0.1	0	0	<1
Water	%	ASTM D6304	<0.05	0.003	0.005	0.002
ppm Water	ppm	ASTM D6304	<500	34.0	56.6	23.8

FLUID CLEANLINESS		method	limit/base	current	history1	history2
Particles >4µm		ASTM D7647	>2500	---	▲ 11362	---
Particles >6µm		ASTM D7647	>640	---	▲ 3770	---
Particles >14µm		ASTM D7647	>80	---	▲ 482	---
Particles >21µm		ASTM D7647	>20	---	▲ 158	---
Particles >38µm		ASTM D7647	>4	---	▲ 5	---
Particles >71µm		ASTM D7647	>3	---	0	---
Oil Cleanliness		ISO 4406 (c)	>18/16/13	---	▲ 21/19/16	---

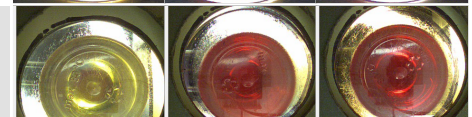
HEAVY METALS		method	limit/base	current	history1	history2
Aluminum	ppm	ASTM D5185m	<0.1	<1	0	0
Nickel	ppm	ASTM D5185m	<0.1	0	0	0
Lead	ppm	ASTM D5185m	<0.1	0	0	<1
Vanadium	ppm	ASTM D5185m	<0.1	<1	0	0
Iron	ppm	ASTM D5185m	<0.1	0	0	<1
Calcium	ppm	ASTM D5185m	<0.1	0	0	6
Magnesium	ppm	ASTM D5185m	<0.1	1	0	0
Phosphorus	ppm	ASTM D5185m	<0.1	0	2	2
Zinc	ppm	ASTM D5185m	<0.1	0	0	<1

SAMPLE IMAGES		method	limit/base	current	history1	history2
---------------	--	--------	------------	---------	----------	----------

Color



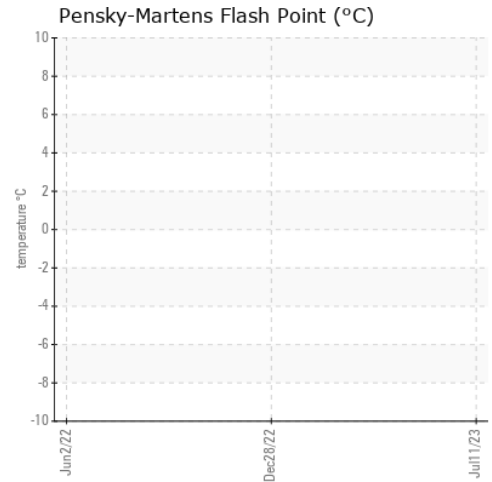
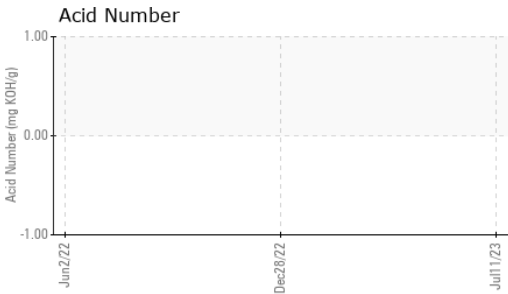
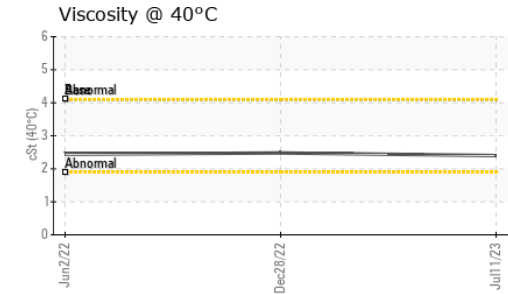
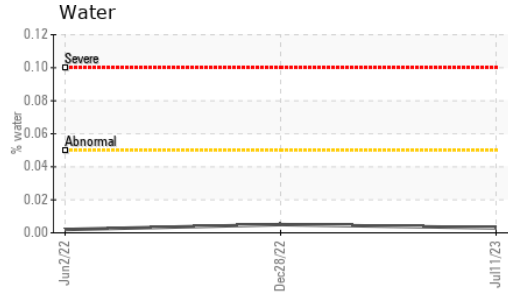
Bottom





FUEL REPORT

GRAPHS



Certificate L2367

Laboratory : WearCheck USA - 501 Madison Ave., Cary, NC 27513
Sample No. : WC0823674 **Received** : 21 Jul 2023
Lab Number : **05904718** **Diagnosed** : 01 Aug 2023
Unique Number : 10566074 **Diagnostician** : Doug Bogart
Test Package : CONST (Additional Tests: KF, SCREEN)

To discuss this sample report, contact Customer Service at 1-800-237-1369.

* - Denotes test methods that are outside of the ISO 17025 scope of accreditation.

Statements of conformity to specifications are based on the simple acceptance decision rule (JCGM 106:2012)

BUCKNER HEAVY LIFT

4732 NC 54 EAST
 GRAHAM, NC
 US 27253-9215

Contact: MICHAEL LAWSON
 michael@bucknercompanies.com

T: (336)376-8888
 F: (336)376-4090