



FILTER DEBRIS ANALYSIS

Sample Rating Trend



NORMAL



Machine Id

FILTER 2

Component

Filter

Fluid

NOT GIVEN (--- GAL)

DIAGNOSIS

Recommendation

Resample at the next service interval to monitor. Diagnostician's Note: The filters simply have a high amount of dirt and fibres and some non-ferrous wear debris. All normal. Our technician's did a spot toluene test on the filter patch to determine if the base material on the patch was varnish (insoluble). The test was negative indicating this is simply fine dirt, not varnish. All tests and evaluation performed at performed at WearCheck Canada.

Wear Particles

The filter contained no appreciable wear particles. All filter wear levels are normal.

Contaminants

The filter contained only normal levels of contaminants, and debris. All filter contaminant levels are normal.

SAMPLE INFORMATION

method	limit/base	current	history1	history2
Sample Number	Client Info	WC05904724	---	---
Sample Date	Client Info	20 Jul 2023	---	---
Machine Age	hrs Client Info	0	---	---
Oil Age	hrs Client Info	0	---	---
Oil Changed	Client Info	N/A	---	---
Sample Status		NORMAL	---	---

FILTER WEAR PARTICLES

method	limit/base	current	history1	history2
Ferrous Rubbing	Scale 0-10 *ASTM D7684	1		
Ferrous Sliding	Scale 0-10 *ASTM D7684			
Ferrous Cutting	Scale 0-10 *ASTM D7684			
Ferrous Rolling	Scale 0-10 *ASTM D7684			
Ferrous Break-in	Scale 0-10 *ASTM D7684			
Ferrous Spheres	Scale 0-10 *ASTM D7684			
Ferrous Black Oxides	Scale 0-10 *ASTM D7684			
Ferrous Red Oxides	Scale 0-10 *ASTM D7684			
Ferrous Corrosive	Scale 0-10 *ASTM D7684			
Ferrous Other	Scale 0-10 *ASTM D7684			
Nonferrous Rubbing	Scale 0-10 *ASTM D7684	1		
Nonferrous Sliding	Scale 0-10 *ASTM D7684	1		
Nonferrous Cutting	Scale 0-10 *ASTM D7684			
Nonferrous Rolling	Scale 0-10 *ASTM D7684	1		
Nonferrous Other	Scale 0-10 *ASTM D7684			

FILTER CONTAMINANTS

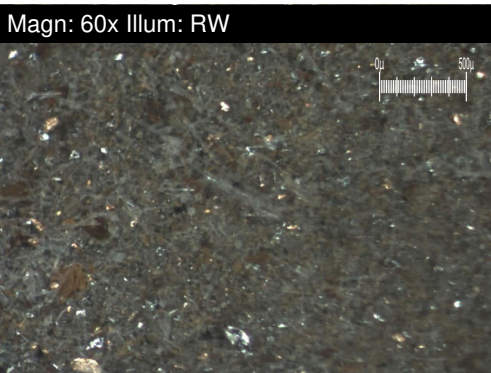
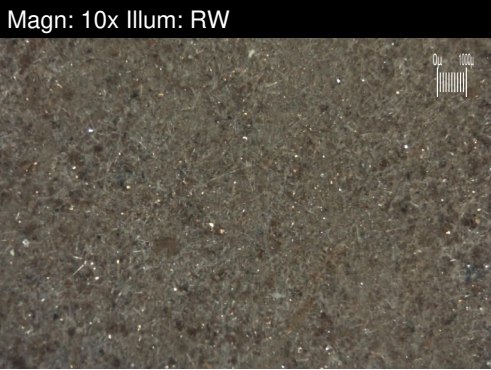
method	limit/base	current	history1	history2
Sand/Dirt	Scale 0-10 ASTM D7684	5		
Fibres	Scale 0-10 *ASTM D7684	3		
Spheres	Scale 0-10 *ASTM D7684			
Other	Scale 0-10 *ASTM D7684			
Patch Weight	mg *ASTM D7684	79	---	---

SAMPLE IMAGES

method	limit/base	current	history1	history2
Color			no image	no image
Bottom			no image	no image

FILTER REPORT

Machine Id
FILTER 2
Component
Filter
Fluid
NOT GIVEN (--- GAL)



WEAR

The filter contained no appreciable wear particles. All filter wear levels are normal.